

plain fittings inch sizes



Tee 90°



Standard Range

Size	Code	Price
3/8	-	
1/2	3101-005	2.05
3/4	3101-007	2.83
1	3101-010	3.99
1 1/4	3101-012	5.66
1 1/2	3101-015	8.34
2	3101-020	12.68
2 1/2	3101-025	22.00
3	3101-030	37.08
4	3101-040	54.42
5	3101-050	144.45
6	3101-060	190.31
8	3101-080	311.13

Industrial Range

Code	Price
01 122 101	2.00
01 122 102	2.39
01 122 103	3.33
01 122 104	4.59
01 122 105	6.61
01 122 106	9.70
01 122 107	14.83
11 122 312	25.66
01 122 109	43.26
01 122 110	63.50
11 122 316	168.62
01 122 112	221.92
01 122 113	346.00

Swept Tee 90°



Standard Range

Size	Code	Price
1	-	
1 1/2	-	
2	-	
2 1/2	-	
4	-	

Industrial Range

Code	Price
01 148 104	8.99
01 148 106	16.04
01 148 107	23.63
11 148 312	37.66
01 148 110	104.93

Reducing Tee 90°



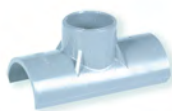
Standard Range

Size	Code	Price
3/4x1 1/2	-	
1x1 1/2	-	
1x3/4	-	

Industrial Range

Code	Price
01 124 122	3.40
01 124 123	4.80
01 124 124	4.83

Saddle 90°



Standard Range

Size	Code	Price
2x1 1/4	-	
3x1 1/2	-	
4x2	-	
6x2	-	

Industrial Range

Code	Price
01 126 129	20.84
01 126 134	27.80
01 126 140	31.38
01 126 146	36.47

Tee 45°



Standard Range

Size	Code	Price
1/2	-	
3/4	-	
1	-	
1 1/4	-	
1 1/2	-	
2	-	

Industrial Range

Code	Price
01 128 102	10.72
01 128 103	11.31
01 128 104	12.82
01 128 105	15.52
01 128 106	19.44
01 128 107	29.65



Elbow 90°



Standard Range

Size	Code	Price
3/8	3106-003	1.86
1/2	3106-005	1.84
3/4	3106-007	2.14
1	3106-010	2.99
1 1/4	3106-012	5.12
1 1/2	3106-015	6.65
2	3106-020	10.02
2 1/2	3106-025	19.27
3	3106-030	28.88
4	3106-040	43.10
5	3106-050	99.36
6	3106-060	172.74
8	3106-080	278.21

Industrial Range

Code	Price
01 115 101	1.86
01 115 102	2.11
01 115 103	2.49
01 115 104	3.51
01 115 105	5.93
01 115 106	7.71
01 115 107	11.73
11 115 312	22.42
01 115 109	33.64
01 115 110	50.26
11 115 316	115.96
01 115 112	202.27
01 115 113	308.73

Bend 90°



Standard Range

Size	Code	Price
1/2	3106-005SR	6.65
3/4	3106-007SR	7.71
1	3106-010SR	10.85
1 1/4	3106-012SR	15.51
1 1/2	3106-015SR	19.42
2	3106-020SR	25.76
2 1/2	3106-025SR	50.75
3	3106-030SR	65.89
4	3106-040SR	108.53

Industrial Range

Code	Price
01 118 102	7.71
01 118 103	8.99
01 118 104	12.62
01 118 105	18.10
01 118 106	22.63
01 118 107	30.03
11 118 312	62.49
01 118 109	76.70
01 118 110	126.57

Elbow 45°



Standard Range

Size	Code	Price
3/8	-	-
1/2	3117-005	3.45
3/4	3117-007	3.52
1	3117-010	4.44
1 1/4	3117-012	6.43
1 1/2	3117-015	8.04
2	3117-020	11.09
2 1/2	3117-025	17.51
3	3117-030	26.07
4	3117-040	54.11
5	3117-050	91.74
6	3117-060	112.35
8	3117-080	252.22

Industrial Range

Code	Price
01 119 101	3.51
01 119 102	4.02
01 119 103	4.11
01 119 104	5.11
01 119 105	7.50
01 119 106	9.31
01 119 107	12.91
11 119 312	20.43
01 119 109	30.43
01 119 110	63.08
11 119 316	107.15
01 119 112	130.76
01 119 113	299.00



Pressure Ratings

ABS systems are suitable for continuous use at the following maximum operating pressures:

Pipes:

- Class B - 6 bar
- Class C - 9 bar
- Class D - 12 bar
- Class E - 15 bar
- Class T - 12 bar

Fittings:

- 3/8" to 4" - 15 bar
- 6" - 12 bar
- 8" - 9 bar
- 10" and 12" - 6 bar

All pressure ratings are calculated at 20°C

plain fittings inch sizes

Bend 90°

Long Radius



Standard Range

Size	Code	Price
3	3106-030LR	80.41
4	3106-040LR	162.50
5	-	
6	3106-060LR	358.92
8	-	

Industrial Range

Code	Price
01 309 109	93.72
01 309 110	189.46
11 309 316	355.49
01 309 112	418.56
01 309 113	917.60

Bend 45°

Long Radius



Standard Range

Size	Code	Price
1	-	
1 1/2	3117-015LR	19.11
2	3117-020LR	31.56
3	3117-030LR	63.50
4	3117-040LR	129.86
5	-	
6	-	
8	-	

Industrial Range

Code	Price
01 310 104	13.13
01 310 106	22.26
01 310 107	36.83
01 310 109	76.90
01 310 110	151.39
11 310 316	299.19
01 310 112	348.47
01 310 113	695.83

Bend 22 1/2°

Long Radius



Standard Range

Size	Code	Price
1	-	
1 1/2	3116-015LR	26.45
2	3116-020LR	44.18
2 1/2	-	
3	3116-030LR	92.78
4	3116-040LR	188.78
5	-	
6	3116-060LR	414.74
8	-	

Industrial Range

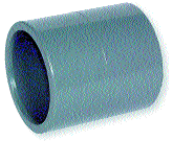
Code	Price
01 311 104	18.22
01 311 106	30.84
01 311 107	51.47
11 311 312	76.90
01 311 109	108.14
01 311 110	220.08
11 311 316	408.56
01 311 112	483.63
01 311 113	971.13



Industrial vs Standard Range

The Durapipe industrial ABS system has a proven 30 year track record as an industrial grade system. It is approved under DWI Regulation 31 and by WRAS (Water Regulations Advisory Scheme). Standard ABS systems are ideal for applications involving water and weak chemicals, and also carry WRAS Approval.

Socket



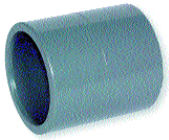
Standard Range

Size	Code	Price
3/8	-	
1/2	3129-005	1.37
3/4	3129-007	1.52
1	3129-010	1.76
1 1/4	3129-012	3.06
1 1/2	3129-015	3.60
2	3129-020	5.12
2 1/2	3129-025	11.09
3	3129-030	20.40
4	3129-040	29.04
5	3129-050	56.47
6	3129-060	72.46
8	3129-080	152.10

Industrial Range

Code	Price
01 100 101	1.42
01 100 102	1.54
01 100 103	1.73
01 100 104	2.00
01 100 105	3.51
01 100 106	4.23
01 100 107	5.93
11 100 312	12.91
01 100 109	23.83
01 100 110	33.83
11 100 316	66.30
01 100 112	84.51
01 100 113	168.79

O-Ring Socket



Standard Range

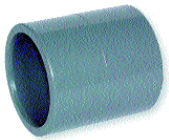
Size	Code	Price
2	-	
3	-	
4	-	
6	-	
8	-	

Industrial Range

Code	Price
01 305 107	19.43
01 305 109	32.44
01 305 110	49.06
01 305 112	186.25
01 305 113	221.54

Adaptor Socket

Inch x mm



Standard Range

Size	Code	Price
1/2x20	-	
3/4x25	-	
1x32	-	
1 1/4x40	-	
1 1/2x50	-	
2x63	-	
3x90	-	
4x110	-	
6x160	-	

Industrial Range

Code	Price
11 345 102	2.11
11 345 103	2.38
11 345 104	2.89
11 345 105	3.92
11 345 106	5.69
11 345 107	12.91
11 345 109	23.63
11 345 110	38.24
11 345 112	88.72

Reducing Socket



Standard Range

Size	Code	Price
3/4x1 1/2	-	
1x3/4	-	
1 1/4x1	-	
1 1/2x1 1/4	-	
2x1 1/2	-	
3x2	-	
4x3	-	
6x4	-	
8x6	-	

Industrial Range

Code	Price
01 114 122	1.84
01 114 124	2.31
01 114 125	4.41
01 114 127	4.90
01 114 130	7.63
01 114 135	22.63
01 114 141	33.83
01 114 147	122.55
01 114 152	189.64

plain fittings inch sizes

Union

EPDM O-Ring



Standard Range

Size	Code	Price
3/8	-	-
1/2	3197-005	7.11
3/4	3197-007	7.71
1	3197-010	10.39
1 1/4	3197-012	12.68
1 1/2	3197-015	17.51
2	3197-020	22.86
2 1/2*	3197-025	55.34
3**	3197-030	84.68
4**	3197-040	114.05

Industrial Range

Code	Price
01 205 101	6.91
01 205 102	8.31
01 205 103	8.99
01 205 104	12.10
01 205 105	14.83
01 205 106	20.43
01 205 107	26.64
11 205 312	64.47
01 205 109	98.73
01 205 110	133.00

* Maximum pressure 10 bar

** Maximum pressure 9 bar

Union

FPM O-Ring



Standard Range

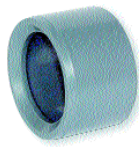
Size	Code	Price
3/8	-	-
1/2	-	-
3/4	-	-
1	-	-
1 1/4	-	-
1 1/2	-	-
2	-	-
3**	-	-

Industrial Range

Code	Price
01 204 101	7.33
01 204 102	8.90
01 204 103	9.57
01 204 104	12.89
01 204 105	15.74
01 204 106	21.71
01 204 107	28.38
01 204 109	107.14

** Maximum pressure 9 bar

Reducing Bush



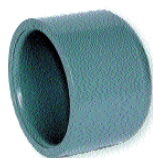
Standard Range

Size	Code	Price
1/2x3/8	3137-073	1.29
3/4x1/2	3137-101	1.37
1x1/2	3137-130	1.76
1x3/4	3137-131	1.76
1 1/4x1/2	-	-
1 1/4x3/4	-	-
1 1/4x1	3137-168	2.30
1 1/2x1/2	-	-
1 1/2x3/4	3137-210	2.99
1 1/2x1	3137-211	2.99
1 1/2x1 1/4	3137-212	2.99
2x3/4	-	-
2x1	3137-249	3.99
2x1 1/4	3137-250	3.99
2x1 1/2	3137-251	3.99
2 1/2x2	3137-292	7.11
3x1 1/2	3137-337	12.23
3x2	3137-338	12.23
3x2 1/2	3137-339	12.23
4x2	3137-420	15.29
4x3	3137-422	15.29
5x4	3137-490	44.18
6x4	3137-532	47.09
6x5	-	-
8x6	3137-585	101.66

Industrial Range

Code	Price
01 109 121	1.20
01 109 122	1.54
01 109 123	2.00
01 109 124	2.00
01 109 116	2.80
01 109 117	2.80
01 109 125	2.80
01 109 118	3.51
01 109 119	3.51
01 109 126	3.51
01 109 127	3.51
01 109 120	4.59
01 109 128	4.59
01 109 129	4.59
01 109 130	4.59
01 109 131	8.31
01 109 134	12.91
01 109 135	12.91
01 109 136	14.23
-	-
01 109 141	17.82
01 329 142	51.47
01 109 147	54.87
01 329 148	67.71
01 109 152	113.17

Cap



Standard Range

Size	Code	Price
3/8	-	-
1/2	3147-005	1.30
3/4	3147-007	1.52
1	3147-010	1.76
1 1/4	3147-012	2.83
1 1/2	3147-015	4.35
2	3147-020	5.66
2 1/2	3147-025	14.22
3	3147-030	16.74
4	3147-040	25.61
5	3147-050	45.49
6	3147-060	67.95
8	3147-080	124.17

Industrial Range

Code	Price
01 140 101	1.20
01 140 102	1.50
01 140 103	1.72
01 140 104	1.99
01 140 105	3.33
01 140 106	5.11
01 140 107	6.48
11 149 312	16.62
01 140 109	19.51
01 140 110	29.83
-	-
-	-

Stub Flange

Serrated Face



Standard Range

Size	Code	Price
1/2	3154-005	1.60
3/4	3154-007	1.68
1	3154-010	2.05
1 1/4	3154-012	3.62
1 1/2	3154-015	5.41
2	3154-020	8.34
2 1/2	3154-025	13.22
3	3154-030	16.28
4	3154-040	21.09
5	3154-050	48.46
6	3154-060	54.80
8	3154-080	114.65
10	-	
12	-	

Industrial Range

Code	Price
-	
-	
-	
-	
-	
01 135 107	9.70
11 135 312	15.42
01 135 109	19.01
01 135 110	24.64
11 135 316	56.46
01 135 112	63.90
01 135 113	127.70
01 139 114	155.50
01 139 115	206.29

Full Face Flange

Drilled BS 10 Table D&E



Standard Range

Size	Code	Price
1/2	3151-005E	7.57
3/4	3151-007E	7.71
1	3151-010E	8.10
1 1/4	3151-012E	9.71
1 1/2	3151-015E	11.39
2	3151-020E	14.90
3	3151-030E	27.98
4 Table D	-	
4 Table E	3151-040E	37.28
6	-	

Industrial Range

Code	Price
01 130 102	8.83
01 130 103	8.99
01 130 104	9.42
01 130 105	11.31
01 130 106	13.20
01 130 107	17.32
01 130 109	33.24
01 317 110	40.24
01 130 110	43.46
01 130 112	80.91

Full Face Flange

Drilled BS4504 PN10/16



Standard Range

Size	Code	Price
1/2	3151-005N	7.57
3/4	3151-007N	7.71
1	3151-010N	8.10
1 1/4	3151-012N	9.71
1 1/2	3151-015N	11.31
2	3151-020N	14.90
3	3151-030N	27.98
4	3151-040N	37.28
6	-	

Industrial Range

Code	Price
01 319 102	9.22
01 319 103	9.31
01 319 104	9.80
01 319 105	11.80
01 319 106	13.82
01 319 107	18.03
01 319 109	34.26
01 319 110	45.25
01 319 112	83.90

Full Face Flange

Drilled ANSI 150



Standard Range

Size	Code	Price
1/2	-	
3/4	-	
1	-	
1 1/2	-	
2	-	
3	-	
4	-	
6	-	

Industrial Range

Code	Price
01 322 102	9.22
01 322 103	9.31
01 322 104	9.80
01 322 106	13.82
01 322 107	18.03
01 322 109	34.26
01 322 110	45.24
01 322 112	83.90

Full Face Flange

Undrilled



Standard Range

Size	Code	Price
1/2	-	
3/4	-	
1	-	
1 1/4	-	
1 1/2	-	
2	-	
3	-	
4	-	
6	-	

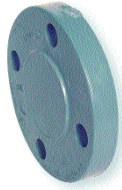
Industrial Range

Code	Price
01 129 102	8.69
01 129 103	8.83
01 129 104	9.31
01 129 105	10.90
01 129 106	12.91
01 129 107	16.93
01 129 109	32.05
01 129 110	42.28
01 129 112	79.32

flanges inch sizes

Blind Flange

Drilled BS 10 Table D&E



Standard Range

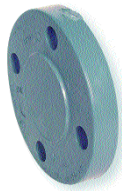
Size	Code	Price
2	3153-020E	33.93
3	3153-030E	59.62
4 Table D	3153-040D	75.68
4 Table E	3153-040E	75.68
6	3153-060E	132.69
8	3153-080E	167.57

Industrial Range

Code	Price
01 313 107	31.44
01 313 109	55.68
01 313 110	71.87
01 313 110	71.87
01 313 112	130.97
01 313 113	183.72

Blind Flange

Drilled BS4504 PN10/16



Standard Range

Size	Code	Price
2	3153-020N	33.93
2 1/2	3153-025N	42.69
3	3153-030N	59.62
4	3153-040N	75.68
5	-	-
6	3153-060N	132.69
8*	-	-

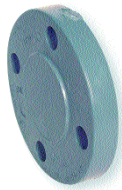
*PN16 only

Industrial Range

Code	Price
01 323 107	31.45
11 323 312	42.28
01 323 109	55.69
01 323 110	71.87
11 323 316	102.14
01 323 112	130.97
01 323 113	183.72

Blind Flange

Drilled ANSI 150



Standard Range

Size	Code	Price
2	3153-020A	29.56
3	3153-030A	51.92
4	3153-040A	68.49
6	-	-
8	-	-

Industrial Range

Code	Price
01 325 107	31.44
01 325 109	55.68
01 325 110	71.87
01 325 112	130.97
01 325 113	183.72

Blind Flange

Undrilled



Standard Range

Size	Code	Price
1	-	-
1 1/2	-	-
2	3153-020U	33.93
3	3153-030U	59.62
4	3153-040U	75.68
6	3153-060U	132.69
8	-	-

Industrial Range

Code	Price
01 131 104	24.42
01 131 106	28.24
01 131 107	31.45
01 131 109	55.69
01 131 110	71.87
01 131 112	130.97
01 131 113	183.72



Flange Pressure Ratings

Not all ABS flanges carry the same pressure rating as the pipe.

This is the maximum working pressure of the flange at 20°C:-

BS 10 Table D: 100 psi (6.9 bar)

BS 10 Table E: 200 psi (13.8 bar)

BS 4504 PN10: 10 bar

BS 4504 PN16: 16 bar

ANSI 150: 10 bar

Take care to select the correct flange for the job.

Backing Ring Table D/E

Galvanised Mild Steel



Size	Standard Range	Industrial Range	Price
1/2	860-005-12E	-	5.39
3/4	860-007-12E	-	6.10
1	860-010-12E	-	6.41
1 1/4	860-012-12E	-	6.60
1 1/2	860-015-12E	-	8.10
2	860-020-11E	860-020-11E	11.49
3	860-030-11E	860-030-11E	17.45
4 Table D	860-040-11D	860-040-12D	22.56
4 Table E	860-040-11E	860-040-12E	22.56
6	860-060-12E	860-060-12E	38.16
8	860-080-12E	860-080-13E	51.63
10	-	860-100-12E	73.04
12	-	860-120-12E	107.77

Backing Ring NP10/16

Galvanised Mild Steel



Size	Standard Range	Industrial Range	Price
1/2	860-005-12NP	-	6.10
3/4	860-007-12NP	-	6.46
1	860-010-12NP	-	7.67
1 1/4	860-012-12NP	-	8.15
1 1/2	860-015-12NP	-	8.94
2	860-020-11NP	860-020-11NP	12.63
2 1/2	860-025-11NP	860-025-11NP	17.29
3	860-030-11NP	860-030-11NP	20.00
4	860-040-11NP	860-040-12NP	25.58
5	860-050-11NP	860-050-11NP	35.61
6	860-060-12NP	860-060-12NP	40.60
8 PN10	860-080-12N	860-080-13N	57.09
8 PN16	860-080-12P	860-080-13P	57.09
10*	-	860-100-12N	79.28
12*	-	860-120-12N	107.77

* NP10 only

Backing Ring ASA 150

Galvanised Mild Steel



Size	Standard Range	Industrial Range	Price
1/2	860-005-12A	-	6.10
3/4	860-007-12A	-	6.46
1	860-010-12A	-	7.67
1 1/4	860-012-12A	-	8.15
1 1/2	860-015-12A	-	8.94
2	860-020-11A	860-020-11A	12.63
3	860-030-11A	860-030-11A	20.00
4	860-040-11A	860-040-12A	25.58
6	860-060-12A	860-060-12A	40.60
8	860-080-12A	860-080-13A	57.09

Valve Support Plate

Galvanised Mild Steel - NP10/16



Size	Code	Price
1/2	03 458 102	15.13
3/4	03 458 103	16.10
1	03 458 104	17.00
1 1/4	03 458 105	19.85
1 1/2	03 458 106	24.36
2	03 458 107	27.31
2 1/2	03 458 312	30.31
3	03 458 109	37.14
4	03 458 110	44.03
6	03 458 112	68.41
8*	03 458 113	123.03

*NP16 only

Stub Gasket

EPDM



Size	Standard Range	Industrial Range	Price
1/2	861-_-005	861-_-005	0.47
3/4	861-_-007	861-_-007	0.55
1	861-_-010	861-_-010	0.60
1 1/4	861-_-012	861-_-012	0.75
1 1/2	861-_-015	861-_-015	0.91
2	861-_-020	861-_-020	1.56
2 1/2	861-_-025	861-_-025	1.91
3	861-_-031	861-_-031	2.05
4	861-_-040	861-_-040	2.98
5	861-_-050	861-_-050	3.84
6	861-_-180	861-_-060	4.40
8	861-_-225	861-_-081	8.73
10	861-_-280	861-_-280	10.70
12	861-_-120	861-_-120	12.13

Complete code when ordering

Insert 'ISO' for NP10/16; 'A' for ANSI 150; 'E' for Table D/E

Stub Gasket

FPM



Size	Standard Range	Industrial Range	Price
1/2	862-_-005	862-_-005	2.21
3/4	862-_-007	862-_-007	3.28
1	862-_-010	862-_-010	4.33
1 1/4	862-_-012	862-_-012	6.94
1 1/2	862-_-015	862-_-015	7.59
2	862-_-020	862-_-020	10.00
2 1/2	862-_-025	862-_-025	14.47
3	862-_-031	862-_-031	18.88
4	862-_-040	862-_-040	32.21
5	862-_-050	862-_-050	53.75
6	862-_-180	862-_-060	53.75
8	862-_-225	862-_-081	64.38
10	862-_-280	862-_-280	87.63
12	862-_-120	862-_-120	91.48

Complete code when ordering

Insert 'ISO' for NP10/16; 'A' for ANSI 150; 'E' for Table D/E

Gasket

EPDM - full face



Size	Standard Range	Industrial Range	Price
1/2	863-_-005	863-_-005	1.64
3/4	863-_-007	863-_-007	1.85
1	863-_-010	863-_-010	2.21
1 1/4	863-_-012	863-_-012	2.63
1 1/2	863-_-015	863-_-015	3.12
2	863-_-020	863-_-020	3.84
3	863-_-031	863-_-031	5.39
4	863-_-040	863-_-040	7.53
6	863-_-180	863-_-060	12.13
8	863-_-225	863-_-081	14.33

Complete code when ordering

Insert 'ISO' for NP10/16; 'A' for ANSI 150; 'E' for Table D/E

Gasket

FPM - full face



Size	Standard Range	Industrial Range	Price
1/2	864-_-005	864-_-005	13.04
3/4	864-_-007	864-_-007	15.03
1	864-_-010	864-_-010	18.72
1 1/4	864-_-012	864-_-012	20.58
1 1/2	864-_-015	864-_-015	24.38
2	864-_-020	864-_-020	31.34
3	864-_-031	864-_-031	44.39
4	864-_-040	864-_-040	60.70
6	864-_-180	864-_-060	98.71
8	864-_-225	864-_-081	107.51

Complete code when ordering

Insert 'ISO' for NP10/16; 'A' for ANSI 150; 'E' for Table D/E

adaptor fittings inch sizes

Tee 90°

Plain Socket
x BSP Female Thread



Standard Range

Size	Code	Price
1/2	3102-005	4.98
3/4	3102-007	5.52
1	3102-010	6.65
1 1/4	3102-012	13.91
1 1/2	3102-015	15.35
2	3102-020	21.57
2 1/2	3102-025	33.64
3	3102-030	40.36

Industrial Range

Code	Price
-	
-	
-	
-	
-	
-	
-	
-	

Elbow 90°

Plain Socket
x BSP Female Thread



Standard Range

Size	Code	Price
1/2	3107-005	4.65
3/4	3107-007	4.98
1	3107-010	6.43
1 1/4	3107-012	13.15
1 1/2	3107-015	14.68
2	3107-020	20.80
3	3107-030	38.44

Industrial Range

Code	Price
01 116 102	5.39
01 116 103	5.82
01 116 104	7.50
-	
01 116 106	17.13
01 116 107	24.25
-	

Socket

Plain Socket
x BSP Female Thread



Standard Range

Size	Code	Price
1/2	3135-005BT	3.75
3/4	3135-007BT	4.14
1	3135-010BT	5.12
1 1/4	3135-012BT	8.04
1 1/2	3135-015BT	9.40
2	3135-020BT	12.39
3	3135-030BT	33.86
4	3135-040BT	39.73

Industrial Range

Code	Price
01 101 102	4.40
01 101 103	4.83
01 101 104	5.93
01 101 105	9.31
01 101 106	10.90
01 101 107	14.43
01 101 109	39.45
-	

Union

Plain Socket
x Brass BSP Female
Thread



Standard Range

Size	Code	Price
1/2	-	
3/4	-	
1	-	
1 1/4	-	
1 1/2	-	
2	-	

Industrial Range

Code	Price
01 212 102	11.72
01 212 103	17.00
01 212 104	19.72
01 212 105	27.02
01 212 106	38.05
01 212 107	56.68

Union

Plain Socket
x Brass BSP Male
Thread



Standard Range

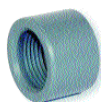
Size	Code	Price
1/2	-	
3/4	-	
1	-	
1 1/4	-	
1 1/2	-	
2	-	

Industrial Range

Code	Price
01 217 102	12.62
01 217 103	18.53
01 217 104	21.22
01 217 105	29.83
01 217 106	41.05
01 217 107	59.89

Reducing Bush

Plain Spigot
x BSP Female Thread



Standard Range

Size	Code	Price
1/2x3/8	3138-073	2.68
3/4x1/2	3138-101	3.12
1x3/4	3138-131	4.14

Industrial Range

Code	Price
01 111 121	3.09
01 111 122	3.62
01 111 124	4.80

Adaptor

Plain Spigot
x BSP Female Thread



Standard Range

Size	Code	Price
1/2	3178-005BT	2.46
3/4	3178-007BT	3.12
1	3178-010BT	4.35
1 1/4	3178-012BT	5.52
1 1/2	3178-015BT	7.41
2	3178-020BT	10.39

Industrial Range

Code	Price
01 153 102	2.81
01 153 103	3.62
01 153 104	5.11
01 153 105	6.42
01 153 106	8.69
01 153 107	12.10

Adaptor

Plain Socket
x BSP Male Thread



Standard Range

Size	Code	Price
3/8	-	
1/2	3136-005BT	2.14
3/4	3136-007BT	2.83
1	3136-010BT	3.89
1 1/4	3136-012BT	5.41
1 1/2	3136-015BT	7.04
2	3136-020BT	10.09
3	3136-030BT	29.04
4	3136-040BT	38.98

Industrial Range

Code	Price
01 151 101	1.97
01 151 102	2.69
01 151 103	2.81
01 151 104	4.41
01 151 105	6.24
01 151 106	8.21
01 151 107	11.73
-	
-	

Hexagon Nipple

Plain Spigot
x BSP Male Thread



Standard Range

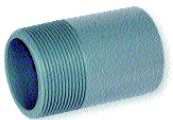
Size	Code	Price
3/8	-	
1/2	-	
3/4	-	
1	-	
1 1/4	-	
1 1/2	-	
2	-	

Industrial Range

Code	Price
01 107 101	2.31
01 107 102	2.49
01 107 103	3.33
01 107 104	4.59
01 107 105	5.82
01 107 106	6.61
01 107 107	8.31

Barrel Nipple

Plain Spigot
x BSP Male Thread



Standard Range

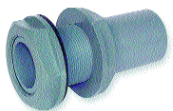
Size	Code	Price
3/8	3181-1-020BT	2.46
1/2	3182-1-020BT	2.68
3/4	3183-1-020BT	3.37
1	3184-1-030BT	4.35
1 1/4	3185-1-035BT	5.96
1 1/2	3186-1-035BT	6.50
2	3187-1-040BT	8.40
2 1/2	3188-1-050BT	19.65
3	3189-1-050BT	22.16
4	3190-1-060BT	29.52

Industrial Range

Code	Price
-	
-	
-	
-	
-	
-	
-	
-	
01 316 109	25.84
01 316 110	34.43

Tank Connector

Plain Spigot
x BSP Male Thread



Standard Range

Size	Code	Price
1/2	3143-005	4.65
3/4	3143-007	5.12
1	3143-010	11.09
1 1/4	3143-012	28.11
1 1/2	3143-015	30.96
2	3143-020	36.99
2 1/2	3143-025	48.54
3	3143-030	55.49
4	3143-040	83.25
6	3143-060	224.67

Industrial Range

Code	Price
01 235 102	5.39
01 235 103	5.93
-	
-	
-	
-	
-	
-	
-	
-	
-	

Hose Adaptor

Hose Tail
x BSP Male Thread



Standard Range

Size	Code	Price
1/2	-	
3/4	-	
1	-	

Industrial Range

Code	Price
01 157 102	3.92
01 157 103	5.11
01 157 104	5.93

threaded fittings inch sizes

Elbow 90°

BSP Female Thread



Standard Range

Size	Code	Price
1/2	-	
3/4	-	
1	-	
1 1/2	-	
2	-	

Industrial Range

Code	Price
01 117 102	5.69
01 117 103	5.82
01 117 104	7.50
01 117 106	15.03
01 117 107	22.63

Socket

BSP Female Thread



Standard Range

Size	Code	Price
1/2	-	
3/4	-	
1	-	
1 1/4	-	
1 1/2	-	
2	-	
3	-	

Industrial Range

Code	Price
01 102 102	5.39
01 102 103	6.01
01 102 104	7.51
01 102 105	10.28
01 102 106	11.59
01 102 107	14.55
01 102 109	40.06

Reducing Bush

BSP Male Thread
x BSP Female Thread



Standard Range

Size	Code	Price
1/2x3/8	-	
3/4x1/2	-	
1x3/4	-	

Industrial Range

Code	Price
01 113 121	3.33
01 113 122	3.80
01 113 124	4.90

Plug

BSP Male Thread



Standard Range

Size	Code	Price
3/8	-	
1/2	-	
3/4	-	
1	-	
1 1/4	-	
1 1/2	-	
2	-	

Industrial Range

Code	Price
01 155 101	2.62
01 155 102	3.33
01 155 103	4.11
01 155 104	4.90
01 155 105	6.49
01 155 106	8.21
01 155 107	9.22

Cap

BSP Female Thread



Standard Range

Size	Code	Price
3/8	-	
1/2	-	
3/4	-	
1	-	
1 1/4	-	
1 1/2	-	
2	-	
3	-	

Industrial Range

Code	Price
01 141 101	4.52
01 141 102	5.82
01 141 103	6.61
01 141 104	7.13
01 141 105	7.63
01 141 106	9.80
01 141 107	12.42
01 141 109	42.86

Hexagon Nipple

BSP Male Thread



Standard Range

Size	Code	Price
3/8	-	
1/2	-	
3/4	-	
1	-	
1 1/4	-	
1 1/2	-	
2	-	

Industrial Range

Code	Price
01 106 101	2.62
01 106 102	2.91
01 106 103	3.80
01 106 104	4.90
01 106 105	6.81
01 106 106	7.99
01 106 107	9.70

Barrel Nipple

BSP Male Thread



Standard Range

Size	Code	Price
3/8	3181-020BT	2.89
1/2	3182-020BT	2.99
3/4	3183-020BT	3.52
1	3184-030BT	4.65
1 1/4	3185-035BT	6.05
1 1/2	3186-035BT	6.56
2	3187-040BT	8.40
2 1/2	3188-050BT	19.04
3	3189-050BT	22.16
4	3190-060BT	29.81

Industrial Range

Code	Price
-	
-	
-	
-	
-	
-	
-	
-	
-	

Back Nut

BSP Female Thread



Standard Range

Size	Code	Price
3/8	-	
1/2	3142-005BT	1.99
3/4	3142-007BT	2.14
1	3142-010BT	3.75
1 1/4	3142-012BT	8.10
1 1/2	3142-015BT	9.23
2	3142-020BT	9.71
2 1/2	3142-025BT	14.68
3	3142-030BT	16.58
4	3142-040BT	20.87

Industrial Range

Code	Price
01 159 101	1.97
01 159 102	2.31
01 159 103	2.49
01 159 104	4.40
01 159 105	9.42
01 159 106	10.72
01 159 107	11.31
-	
-	
-	

PTFE Tape

BS7786

Roll Size: 12m x 12m x 0.075mm
Order Code: 767-120
Price: 0.82



Making Threaded Joints

We recommend the use of PTFE tape for all threaded joints on plastic piping. Do NOT use pipe joint compounds, as these can cause stress cracking and lead to failure of the system.

When using PTFE tape, follow the following guidelines:

- Always wrap tape clockwise
- Apply 2 to 3 wraps
- Tighten hand-tight plus 1 1/2 to 2 turns
- Do not overtighten

