



 **Agrusafe**

AgruSafe double containment is fabricated from separate pipes, and is available in Polypropylene, PVDF, Polyethylene and ECTFE (Halar). It is manufactured by AGRU - using the latest production and fabrication techniques to ensure maximum system integrity.

The systems may be assembled using the same carrier and containment materials, or they may also be ordered with dissimilar materials for reasons of economy or perhaps to suit a particular application.

AgruSafe is available with carrier pipe sizes as small as DN 25mm, however it is especially suitable for larger diameter systems. The standard range features carrier pipe diameters in sizes up to DN 250mm, but it is commonly manufactured in larger sizes up to DN 600mm. It is ideal for industrial and process waste lines as well as for pressurised transfer piping. Typical applications are found in pharmaceutical and semi-conductor plants, steel mills, plating shops, or in the chemical and nuclear industries.

There are two separate welding techniques used for AgruSafe systems: simultaneous welding and cascade welding.

Simultaneous welding uses the standard butt-fusion welding technique and is used where carrier pipes and containment pipes of the same material are used. The twin walls of the pipes and the fittings are welded together during the assembly process so that they can be clamped as one piece in the butt-fusion welding machine. Welding of the carrier and containment pipe takes place simultaneously.

The cascade welding technique is required when the carrier and containment pipes are from different materials. Cascade welding requires a specially adapted butt-fusion welding machine with a split welding plate so that the carrier pipe can be welded first. Once this is done, the outer shell of the welding plate is moved into position so that the containment pipe can be welded. Welding machines for both systems are available for sale or for hire.

AgruSafe systems are available in a variety of pressure ratings - up to PN16 - to suit the application. Using the wide range of pressure rated pipe and fittings - for example PN 3.2, PN 6 or PN 10 - it is possible to optimise the cost effectiveness of the system.

AgruSafe Simultaneous Welded Systems					
Containment		PP	PE	PVDF	ECTFE
Pipe Size	Carrier Pipe Size	PP	PE	PVDF	ECTFE
90mm	32mm	•	•	•	•
110mm	63mm	•	•		
125mm	63mm			•	
160mm	63mm				•
160mm	90mm	•	•	•	•
200mm	110mm	•	•	•	
280mm	160mm	•	•	•	
315mm	200mm	•	•		
355mm	250mm	•	•		

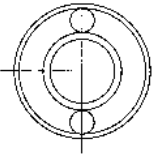
AgruSafe Cascade Welded Systems					
Containment		PE	PE	PP	
Pipe Size	Carrier Pipe Size	PP	PVDF	PVDF	
90mm	32mm	•	•	•	
110mm	63mm				
125mm	63mm	•	•	•	
160mm	90mm	•	•	•	
200mm	110mm	•	•	•	
280mm	160mm	•	•	•	

Larger sizes on request



Pipe - PP x PP

5m Lengths

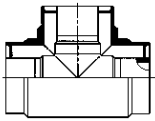


PN3.2 x PN6		
Size Containment/Carrier	Code	Price/M
90/32	-	
110/63	-	
160/90	80 785 1690 37	64.53
200/110	80 785 2011 37	96.05
280/160	-	
315/200	-	
355/250	-	

PN3.2 x PN10	
Code	Price/M
-	
80 785 1163 31	46.68
80 785 1690 31	69.00
80 785 2011 31	102.55
80 785 2816 31	184.68
80 785 3120 31	225.26
80 785 3525 31	301.69

PN6 x PN10	
Code	Price/M
80 785 9032 71	41.54
-	
-	
-	
-	
-	
-	

Tee 90° - PP x PP

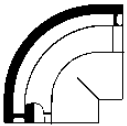


PN3.2 x PN6		
Size Containment/Carrier	Code	Price
90/32	-	
110/63	-	
160/90	80 106 1690 37	245.56
200/110	80 106 2011 37	313.87
280/160	-	
315/200	-	
355/250	-	

PN3.2 x PN10	
Code	Price
-	
80 106 1163 31	162.35
80 106 1690 31	252.99
80 106 2011 31	320.62
80 106 2816 31	758.95
80 106 3120 31	1083.64
80 106 3525 31	1824.99

PN6 x PN10	
Code	Price
80 106 9032 71	134.34
-	
-	
-	
-	
-	
-	

Bend 90° - PP x PP

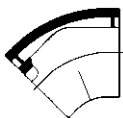


PN3.2 x PN6		
Size Containment/Carrier	Code	Price
90/32	-	
110/63	-	
160/90	80 101 1690 37	166.40
200/110	80 101 2011 37	219.85
280/160	-	
315/200	-	
355/250	-	

PN3.2 x PN10	
Code	Price
-	
80 101 1163 31	117.16
80 101 1690 31	168.44
80 101 2011 31	220.53
80 101 2816 31	492.45
80 101 3120 31	578.35
80 101 3525 31	1162.11

PN6 x PN10	
Code	Price
80 101 9032 71	92.80
-	
-	
-	
-	
-	
-	

Bend 45° - PP x PP



PN3.2 x PN6		
Size Containment/Carrier	Code	Price
90/32	-	
110/63	-	
160/90	80 102 1690 37	200.76
200/110	80 102 2011 37	260.43
280/160	-	
315/200	-	
355/250	-	

PN3.2 x PN10	
Code	Price
-	
80 102 1163 31	140.69
80 102 1690 31	201.57
80 102 2011 31	265.15
80 102 2816 31	577.68
80 102 3120 31	648.03
80 102 3525 31	1393.46

PN6 x PN10	
Code	Price
80 102 9032 71	111.22
-	
-	
-	
-	
-	
-	

Concentric Reducer - PP x PP



PN3.2 x PN6		
Size Containment/Carrier	Code	Price
110/63x90/32	-	
160/90x90/32	-	
160/90x110/63	80 107 9063 37	174.52
200/110x110/63	-	
200/110x160/90	80 107 1190 37	304.38
280/160x160/90	-	
280/160x200/110	-	
315/200x200/110	-	
315/200x280/160	-	
355/250x280/160	-	
355/250x315/200	-	

PN3.2 x PN10	
Code	Price
-	
80 107 9032 31	225.26
80 107 9063 31	175.21
80 107 1163 31	374.73
80 107 1190 31	305.75
80 107 1690 31	585.78
80 107 1611 31	585.78
80 107 2011 31	757.60
80 107 2016 31	757.60
80 107 2516 31	1616.66
80 107 2520 31	1424.57

PN6 x PN10	
Code	Price
80 107 6332 71	103.90
-	
-	
-	
-	
-	
-	
-	
-	

Cap - PP x PP



PN3.2 x PN6		
Size Containment/Carrier	Code	Price
90/32	-	
110/63	-	
160/90	80 154 1690 37	148.82
200/110	80 154 2011 37	183.31
280/160	-	
315/200	-	
355/250	-	

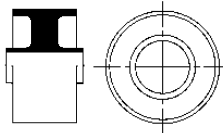
PN3.2 x PN10	
Code	Price
-	
80 154 1163 31	107.55
80 154 1690 31	148.82
80 154 2011 31	183.31
80 154 2816 31	246.21
80 154 3120 31	306.43
80 154 3525 31	349.04

PN6 x PN10	
Code	Price
80 154 9032 71	98.21
-	
-	
-	
-	
-	
-	

Fixed Point Fitting - PP x PP

(Dog Bone Type 1)

Isolates Containment



PN3.2 x PN6

Size Containment/Carrier	Code	Price
90/32	-	
110/63	-	
160/90	80 137 1690 37	156.26
200/110	80 137 2011 37	192.12
280/160	-	
315/200	-	
355/250	-	

PN3.2 x PN10

Code	Price
-	
80 137 1163 31	113.64
80 137 1690 31	156.26
80 137 2011 31	192.12
80 137 2816 31	258.41
80 137 3120 31	321.99
80 137 3525 31	366.63

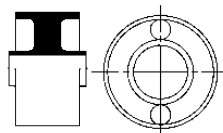
PN6 x PN10

Code	Price
80 137 9032 71	103.62
-	
-	
-	
-	
-	
-	

Fixed Point Fitting - PP x PP

(Dog Bone Type 1)

Continues Containment



PN3.2 x PN6

Size Containment/Carrier	Code	Price
90/32	-	
110/63	-	
160/90	80 147 1690 37	179.26
200/110	80 147 2011 37	221.18
280/160	-	
315/200	-	
355/250	-	

PN3.2 x PN10

Code	Price
-	
80 147 1163 31	142.05
80 147 1690 31	179.26
80 147 2011 31	221.18
80 147 2816 31	297.62
80 147 3120 31	370.68
80 147 3525 31	421.42

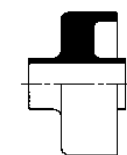
PN6 x PN10

Code	Price
80 147 9032 71	129.61
-	
-	
-	
-	
-	
-	

Fixed Point Fitting - PP x PP

(Dog Bone Type 1-A)

Terminates Containment



PN3.2 x PN6

Size Containment/Carrier	Code	Price
90/32	-	
110/63	-	
160/90	80 136 1690 37	156.26
200/110	80 136 2011 37	192.12
280/160	-	
315/200	-	
355/250	-	

PN3.2 x PN10

Code	Price
-	
80 136 1163 31	113.64
80 136 1690 31	156.26
80 136 2011 31	192.12
80 136 2816 31	258.41
80 136 3120 31	321.99
80 136 3525 31	366.63

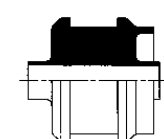
PN6 x PN10

Code	Price
80 136 9032 71	103.62
-	
-	
-	
-	
-	
-	

Fixed Point Fitting - PP x PP

(Dog Bone Type 2-A)

Terminates Containment



PN3.2 x PN6

Size Containment/Carrier	Code	Price
90/32	-	
110/63	-	
160/90	80 138 1690 37	220.53
200/110	80 138 2011 37	330.78
280/160	-	
315/200	-	
355/250	-	

PN3.2 x PN10

Code	Price
-	
80 138 1163 31	144.75
80 138 1690 31	220.53
80 138 2011 31	330.78
80 138 2816 31	449.84
80 138 3120 31	458.62
80 138 3525 31	531.02

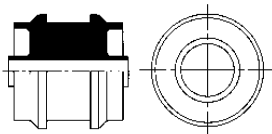
PN6 x PN10

Code	Price
80 138 9032 71	125.27
-	
-	
-	
-	
-	
-	

Fixed Point Fitting - PP x PP

(Dog Bone Type 2)

Isolates Containment



PN3.2 x PN6

Size Containment/Carrier	Code	Price
90/32	-	
110/63	-	
160/90	80 139 1690 37	220.53
200/110	80 139 2011 37	330.78
280/160	-	
315/200	-	
355/250	-	

PN3.2 x PN10

Code	Price
-	
80 139 1163 31	144.75
80 139 1690 31	220.53
80 139 2011 31	330.78
80 139 2816 31	449.84
80 139 3120 31	458.62
80 139 3525 31	531.02

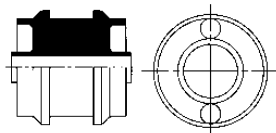
PN6 x PN10

Code	Price
80 139 9032 71	125.27
-	
-	
-	
-	
-	
-	

Fixed Point Fitting - PP x PP

(Dog Bone Type 2)

Continues Containment



PN3.2 x PN6

Size Containment/Carrier	Code	Price
90/32	-	
110/63	-	
160/90	80 149 1690 37	252.99
200/110	80 149 2011 37	380.84
280/160	-	
315/200	-	
355/250	-	

PN3.2 x PN10

Code	Price
-	
80 149 1163 31	181.29
80 149 1690 31	252.99
80 149 2011 31	380.84
80 149 2816 31	517.48
80 149 3120 31	526.95
80 149 3525 31	610.13

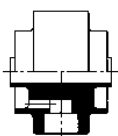
PN6 x PN10

Code	Price
80 149 9032 71	156.92
-	
-	
-	
-	
-	
-	

Fixed Point Fitting - PP x PP

(Leak Detection Connection)

Isolates Containment



PN3.2 x PN6

Size Containment/Carrier	Code	Price
90/32	-	
110/63	-	
160/90	80 140 1690 37	264.50
200/110	80 140 2011 37	302.37
280/160	-	
315/200	-	
355/250	-	

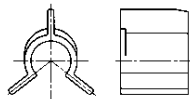
PN3.2 x PN10

Code	Price
-	
80 140 1163 31	224.58
80 140 1690 31	264.50
80 140 2011 31	302.37
80 140 2816 31	373.39
80 140 3120 31	424.13
80 140 3525 31	482.31

PN6 x PN10

Code	Price
80 140 9032 71	209.02
-	
-	
-	
-	
-	
-	

Spider Clip - PP



PN3.2 x PN6

Size Containment/Carrier	Code	Price
90/32	-	
110/63	80 099 1163 33	6.55
160/90	80 099 1690 33	8.66
200/110	80 099 2011 33	9.53
280/160	80 099 2816 33	15.56
315/200	80 099 3120 33	17.59
355/250	80 099 3525 33	18.40

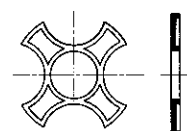
PN3.2 x PN10

Code	Price
-	
80 099 1163 33	6.55
80 099 1690 33	8.66
80 099 2011 33	9.53
80 099 2816 33	15.56
80 099 3120 33	17.59
80 099 3525 33	18.40

PN6 x PN10

Code	Price
-	
-	
-	
-	
-	
-	
-	

Support Disc - PP



PN3.2 x PN6

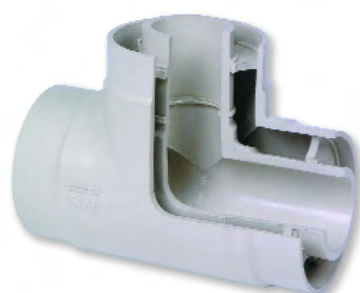
Size Containment/Carrier	Code	Price
90/32	-	
110/63	80 098 1163 33	6.55
160/90	80 098 1690 33	8.66
200/110	80 098 2011 33	9.53
280/160	80 098 2816 33	15.56
315/200	80 098 3120 33	17.59
355/250	80 098 3525 33	18.40

PN3.2 x PN10

Code	Price
-	
80 098 1163 33	6.55
80 098 1690 33	8.66
80 098 2011 33	8.53
80 098 2816 33	15.56
80 098 3120 33	17.59
80 098 3525 33	18.40

PN6 x PN10

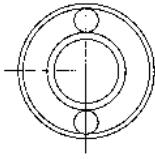
Code	Price
80 098 9032 17	5.36
-	
-	
-	
-	
-	
-	



polyethylene x polyethylene

Pipe - PE x PE

5m Lengths



PN3.2 x PN6

Size Containment/Carrier	Code	Price/M
90/32	-	-
110/63	-	-
160/90	82 785 1690 37	64.53
200/110	82 785 2011 37	96.05
280/160	-	-
315/200	-	-
355/250	-	-

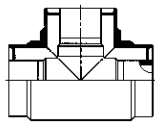
PN3.2 x PN10

Code	Price/M
-	-
82 785 1163 31	46.68
82 785 1690 31	69.00
82 785 2011 31	102.55
82 785 2816 31	184.68
82 785 3120 31	225.26
82 785 3525 31	301.69

PN6 x PN10

Code	Price/M
82 785 9032 71	41.54
-	-
-	-
-	-
-	-
-	-
-	-

Tee 90° - PE x PE



PN3.2 x PN6

Size Containment/Carrier	Code	Price
90/32	-	-
110/63	-	-
160/90	82 106 1690 37	245.56
200/110	82 106 2011 37	313.87
280/160	-	-
315/200	-	-
355/250	-	-

PN3.2 x PN10

Code	Price
-	-
82 106 1163 31	162.35
82 106 1690 31	252.99
82 106 2011 31	320.62
82 106 2816 31	758.95
82 106 3120 31	1083.64
82 106 3525 31	1824.99

PN6 x PN10

Code	Price
82 106 9032 71	134.34
-	-
-	-
-	-
-	-
-	-
-	-



Need advice?

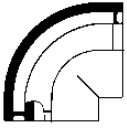
Our expert team are here to help.
Call our freephone:

0800 975 79 71

Or from outside of the UK:
+44 191 521 3111



Bend 90° - PE x PE



PN3.2 x PN6

Size Containment/Carrier	Code	Price
90/32	-	
110/63	-	
160/90	82 101 1690 37	166.40
200/110	82 101 2011 37	219.85
280/160	-	
315/200	-	
355/250	-	

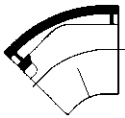
PN3.2 x PN10

Code	Price
-	
82 101 1163 31	117.16
82 101 1690 31	168.44
82 101 2011 31	220.53
82 101 2816 31	492.45
82 101 3120 31	578.35
82 101 3525 31	1162.11

PN6 x PN10

Code	Price
82 101 9032 71	92.80
-	
-	
-	
-	
-	
-	
-	

Bend 45° - PE x PE



PN3.2 x PN6

Size Containment/Carrier	Code	Price
90/32	-	
110/63	-	
160/90	82 102 1690 37	198.87
200/110	82 102 2011 37	260.43
280/160	-	
315/200	-	
355/250	-	

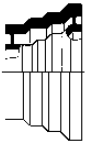
PN3.2 x PN10

Code	Price
-	
82 102 1163 31	140.69
82 102 1690 31	201.57
82 102 2011 31	265.15
82 102 2816 31	577.68
82 102 3120 31	648.03
82 102 3525 31	1393.46

PN6 x PN10

Code	Price
82 102 9032 71	111.22
-	
-	
-	
-	
-	
-	
-	

Concentric Reducer - PE x PE



PN3.2 x PN6

Size Containment/Carrier	Code	Price
110/63x90/32	-	
160/90x90/32	-	
160/90x110/63	82 107 9063 37	174.52
200/110x110/63	-	
200/110x160/90	82 107 1190 37	304.38
280/160x160/90	-	
280/160x200/110	-	
315/200x200/110	-	
315/200x280/160	-	
355/250x280/160	-	
355/250x315/200	-	

PN3.2 x PN10

Code	Price
-	
82 107 9032 31	225.26
82 107 9063 31	175.21
82 107 1163 31	374.73
82 107 1190 31	305.75
82 107 1690 31	585.78
82 107 1611 31	585.78
82 107 2011 31	757.60
82 107 2016 31	757.60
82 107 2516 31	1616.66
82 107 2520 31	1424.57

PN6 x PN10

Code	Price
82 107 6332 71	103.90
-	
-	
-	
-	
-	
-	
-	
-	
-	
-	

Cap - PE x PE



PN3.2 x PN6

Size Containment/Carrier	Code	Price
90/32	-	
110/63	-	
160/90	82 154 1690 37	148.82
200/110	82 154 2011 37	183.31
280/160	-	
315/200	-	
355/250	-	

PN3.2 x PN10

Code	Price
-	
82 154 1163 31	107.55
82 154 1690 31	148.82
82 154 2011 31	183.31
82 154 2816 31	246.21
82 154 3120 31	306.43
82 154 3525 31	349.04

PN6 x PN10

Code	Price
82 154 9032 71	98.21
-	
-	
-	
-	
-	
-	
-	

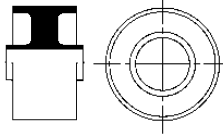


polyethylene x polyethylene

Fixed Point Fitting - PE x PE

(Dog Bone Type 1)

Isolates Containment



PN3.2 x PN6

Size Containment/Carrier	Code	Price
90/32	-	
110/63	-	
160/90	82 137 1690 37	156.26
200/110	82 137 2011 37	192.12
280/160	-	
315/200	-	
355/250	-	

PN3.2 x PN10

Code	Price
-	
82 137 1163 31	113.64
82 137 1690 31	156.26
82 137 2011 31	192.12
82 137 2816 31	258.41
82 137 3120 31	321.99
82 137 3525 31	366.63

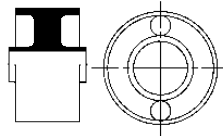
PN6 x PN10

Code	Price
82 137 9032 71	103.62
-	
-	
-	
-	
-	
-	

Fixed Point Fitting - PE x PE

(Dog Bone Type 1)

Continues Containment



PN3.2 x PN6

Size Containment/Carrier	Code	Price
90/32	-	
110/63	-	
160/90	82 147 1690 37	179.26
200/110	82 147 2011 37	221.18
280/160	-	
315/200	-	
355/250	-	

PN3.2 x PN10

Code	Price
-	
82 147 1163 31	142.05
82 147 1690 31	179.26
82 147 2011 31	221.18
82 147 2816 31	297.62
82 147 3120 31	370.68
82 147 3525 31	421.42

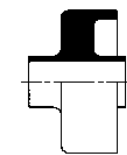
PN6 x PN10

Code	Price
82 147 9032 71	129.61
-	
-	
-	
-	
-	
-	

Fixed Point Fitting - PE x PE

(Dog Bone Type 1-A)

Terminates Containment



PN3.2 x PN6

Size Containment/Carrier	Code	Price
90/32	-	
110/63	-	
160/90	82 136 1690 37	156.26
200/110	82 136 2011 37	192.12
280/160	-	
315/200	-	
355/250	-	

PN3.2 x PN10

Code	Price
-	
82 136 1163 31	113.64
82 136 1690 31	156.26
82 136 2011 31	192.12
82 136 2816 31	258.41
82 136 3120 31	321.99
82 136 3525 31	366.63

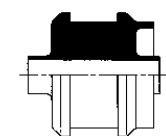
PN6 x PN10

Code	Price
82 136 9032 71	103.62
-	
-	
-	
-	
-	
-	

Fixed Point Fitting - PE x PE

(Dog Bone Type 2-A)

Terminates Containment



PN3.2 x PN6

Size Containment/Carrier	Code	Price
90/32	-	
110/63	-	
160/90	82 138 1690 37	220.53
200/110	82 138 2011 37	330.78
280/160	-	
315/200	-	
355/250	-	

PN3.2 x PN10

Code	Price
-	
82 138 1163 31	144.75
82 138 1690 31	220.53
82 138 2011 31	330.78
82 138 2816 31	449.84
82 138 3120 31	458.62
82 138 3525 31	531.02

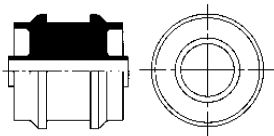
PN6 x PN10

Code	Price
82 138 9032 71	125.27
-	
-	
-	
-	
-	
-	

Fixed Point Fitting - PE x PE

(Dog Bone Type 2)

Isolates Containment



PN3.2 x PN6

Size Containment/Carrier	Code	Price
90/32	-	
110/63	-	
160/90	82 139 1690 37	220.53
200/110	82 139 2011 37	330.78
280/160	-	
315/200	-	
355/250	-	

PN3.2 x PN10

Code	Price
-	
82 139 1163 31	144.75
82 139 1690 31	220.53
82 139 2011 31	330.78
82 139 2816 31	449.84
82 139 3120 31	458.62
82 139 3525 31	531.02

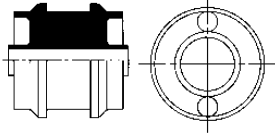
PN6 x PN10

Code	Price
82 139 9032 71	125.27
-	
-	
-	
-	
-	
-	

Fixed Point Fitting - PE x PE

(Dog Bone Type 2)

Continues Containment



PN3.2 x PN6

Size Containment/Carrier	Code	Price
90/32	-	
110/63	-	
160/90	82 149 1690 37	252.99
200/110	82 149 2011 37	380.84
280/160	-	
315/200	-	
355/250	-	

PN3.2 x PN10

Code	Price
-	
82 149 1163 31	181.29
82 149 1690 31	252.99
82 149 2011 31	380.84
82 149 2816 31	517.48
82 149 3120 31	526.95
82 149 3525 31	610.13

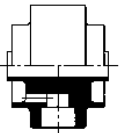
PN6 x PN10

Code	Price
82 149 9032 71	156.92
-	
-	
-	
-	
-	
-	

Fixed Point Fitting - PE x PE

(Leak Detection Connection)

Isolates Containment



PN3.2 x PN6

Size Containment/Carrier	Code	Price
90/32	-	
110/63	-	
160/90	82 140 1690 37	264.50
200/110	82 140 2011 37	302.37
280/160	-	
315/200	-	
355/250	-	

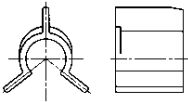
PN3.2 x PN10

Code	Price
-	
82 140 1163 31	224.58
82 140 1690 31	264.50
82 140 2011 31	302.37
82 140 2816 31	373.39
82 140 3120 31	424.13
82 140 3525 31	482.31

PN6 x PN10

Code	Price
82 140 9032 71	209.02
-	
-	
-	
-	
-	
-	

Spider Clip - PE



PN3.2 x PN6

Size Containment/Carrier	Code	Price
90/32	-	
110/63	82 099 1163 33	6.55
160/90	82 099 1690 33	8.66
200/110	82 099 2011 33	9.53
280/160	82 099 2816 33	15.56
315/200	82 099 3120 33	17.59
355/250	82 099 3525 33	18.40

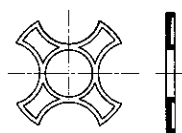
PN3.2 x PN10

Code	Price
-	
82 099 1163 33	6.55
82 099 1690 33	8.66
82 099 2011 33	9.53
82 099 2816 33	15.56
82 099 3120 33	17.59
82 099 3525 33	18.40

PN6 x PN10

Code	Price
-	
-	
-	
-	
-	
-	

Support Disc - PE



PN3.2 x PN6

Size Containment/Carrier	Code	Price
90/32	-	
110/63	82 098 1163 33	6.55
160/90	82 098 1690 33	8.66
200/110	82 098 2011 33	9.53
280/160	82 098 2816 33	15.56
315/200	82 098 3120 33	17.59
355/250	82 098 3525 33	18.40

PN3.2 x PN10

Code	Price
-	
82 098 1163 33	6.55
82 098 1690 33	8.66
82 098 2011 33	9.53
82 098 2816 33	15.56
82 098 3120 33	17.59
82 098 3525 33	18.40

PN6 x PN10

Code	Price
82 098 9032 17	5.36
-	
-	
-	
-	
-	

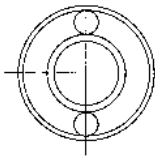
Fast Delivery

We deliver using our own dedicated vehicles or next day carrier. Using our standard delivery service you can expect to receive your order within 24 hours - to your warehouse, factory or job-site



Pipe - PE x PP

5m Lengths



PN6 x PN10

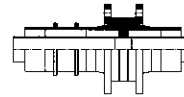
Size Containment/Carrier	Code	Price/M
90/32	83 795 9032 71	32.47
125/63	83 795 1263 71	56.01
160/90	83 795 1690 71	85.77
200/110	83 795 2011 71	120.14
280/160	83 795 2816 71	232.69

Polypropylene carrier pipe

Fixed Point Fitting - PE x PP

(Dog Bone Type 3)

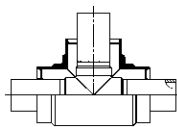
Isolates Containment



PN6 x PN10

Size Containment/Carrier	Code	Price
90/32	83 239 9032 71	242.16
125/63	83 239 1263 71	372.72
160/90	83 239 1690 71	578.35
200/110	83 239 2011 71	706.20
280/160	83 239 2816 71	1043.06

Tee 90° - PE x PP



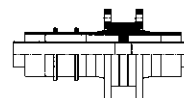
PN6 x PN10

Size Containment/Carrier	Code	Price
90/32	83 206 9032 71	92.80
125/63	83 206 1263 71	140.69
160/90	83 206 1690 71	208.34
200/110	83 206 2011 71	317.25
280/160	83 206 2816 71	706.20

Fixed Point Fitting - PE x PP

(Dog Bone Type 3)

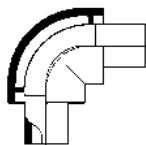
Continues Containment



PN6 x PN10

Size Containment/Carrier	Code	Price
90/32	83 249 9032 71	307.78
125/63	83 249 1263 71	440.36
160/90	83 249 1690 71	654.78
200/110	83 249 2011 71	786.01
280/160	83 249 2816 71	1140.46

Bend 90° - PE x PP



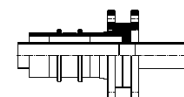
PN6 x PN10

Size Containment/Carrier	PN3.2 x PN6	
	Code	Price
90/32	83 201 9032 71	54.66
125/63	83 201 1263 71	79.82
160/90	83 201 1690 71	142.75
200/110	83 201 2011 71	203.62
280/160	83 201 2816 71	489.74

Fixed Point Fitting - PE x PP

(Dog Bone Type 3-A)

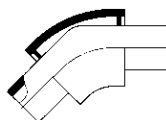
Terminates Containment



PN6 x PN10

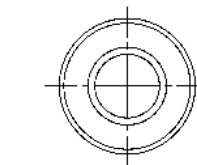
Size Containment/Carrier	Code	Price
90/32	83 238 9032 71	232.69
125/63	83 238 1263 71	357.84
160/90	83 238 1690 71	556.03
200/110	83 238 2011 71	668.31
280/160	83 238 2816 71	972.72

Bend 45° - PE x PP

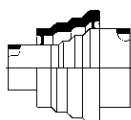


PN6 x PN10

Size Containment/Carrier	Code	Price
90/32	83 202 9032 71	59.54
125/63	83 202 1263 71	97.83
160/90	83 202 1690 71	154.22
200/110	83 202 2011 71	243.52
280/160	83 202 2816 71	654.78



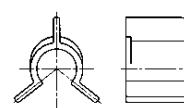
Concentric Reducer - PE x PP



PN6 x PN10

Size Containment/Carrier	Code	Price
125/63x90/32	83 207 6332 71	79.16
160/90x90/32	83 207 9032 71	115.94
160/90x125/63	83 207 9063 71	144.75
200/110x125/63	83 207 1163 71	230.67
200/110x160/90	83 207 1190 71	298.98
280/160x160/90	83 207 1690 71	175.89
280/160x200/110	83 207 1611 71	174.52

Spider Clip - PE

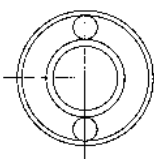


PN6 x PN10

Size Containment/Carrier	Code	Price
90/32	82 099 9032 71	5.36
125/63	82 099 1263 71	7.41
160/90	82 099 1690 71	8.66
200/110	82 099 2011 71	9.53
280/160	82 099 2816 71	15.56

**Pipe -
PE x PVDF**

5m Lengths



PN6 x PN16

Size Containment/Carrier	Code	Price/M
90/32	84 795 9032 72	79.01
125/63	84 795 1263 72	172.49

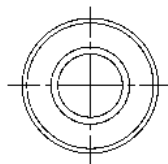
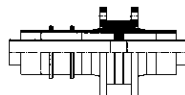
PN6 x PN10

160/90	84 795 1690 73	230.67
200/110	84 795 2011 73	335.51
280/160	84 795 2816 73	673.73

PVDF carrier pipe

**Fixed Point Fitting -
PE x PVDF**

(Dog Bone Type 3)
Isolates Containment



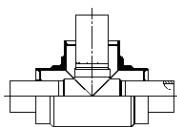
PN6 x PN16

Size Containment/Carrier	Code	Price
90/32	84 239 9032 72	453.88
125/63	84 239 1263 72	603.39

PN6 x PN10

160/90	84 239 1690 73	925.35
200/110	84 239 2011 73	1097.18
280/160	84 239 2816 73	2069.88

**Tee 90° -
PE x PVDF**



PN6 x PN16

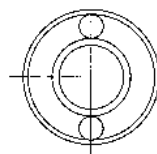
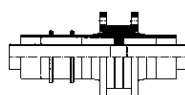
Size Containment/Carrier	Code	Price
90/32	84 206 9032 72	144.75
125/63	84 206 1263 72	328.76

PN6 x PN10

160/90	84 206 1690 73	675.08
200/110	84 206 2011 73	849.60
280/160	84 206 2816 73	2152.40

**Fixed Point Fitting -
PE x PVDF**

(Dog Bone Type 3)
Continues Containment



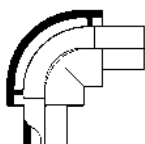
PN6 x PN16

Size Containment/Carrier	Code	Price
90/32	84 249 9032 72	519.51
125/63	84 249 1263 72	671.71

PN6 x PN10

160/90	84 249 1690 73	1003.82
200/110	84 249 2011 73	1175.63
280/160	84 249 2816 73	2167.29

**Bend 90° -
PE x PVDF**



PN6 x PN16

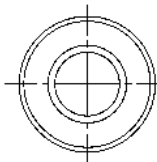
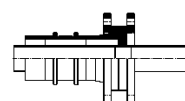
Size Containment/Carrier	Code	Price
90/32	84 201 9032 72	107.43
125/63	84 201 1263 72	273.28

PN6 x PN10

160/90	84 201 1690 73	524.92
200/110	84 201 2011 73	780.60
280/160	84 201 2816 73	2053.64

**Fixed Point Fitting -
PE x PVDF**

(Dog Bone Type 3-A)
Terminates Containment



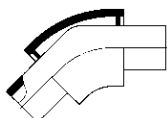
PN6 x PN16

Size Containment/Carrier	Code	Price
90/32	84 238 9032 72	440.36
125/63	84 238 1263 72	577.68

PN6 x PN10

160/90	84 238 1690 73	887.47
200/110	84 238 2011 73	1036.31
280/160	84 238 2816 73	1954.88

**Bend 45° -
PE x PVDF**



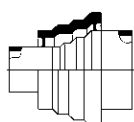
PN6 x PN16

Size Containment/Carrier	Code	Price
90/32	84 202 9032 72	107.81
125/63	84 202 1263 72	261.79

PN6 x PN10

160/90	84 202 1690 73	528.30
200/110	84 202 2011 73	776.54
280/160	84 202 2816 73	2238.98

**Concentric Reducer -
PE x PVDF**



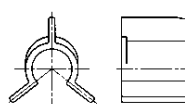
PN6 x PN16

Size Containment/Carrier	Code	Price/M
125/63x90/32	84 207 6332 72	154.91
160/90x90/32	84 207 9032 72	296.28
160/90x125/63	84 207 9063 72	340.92

PN6 x PN10

200/110x125/63	84 207 1163 73	524.92
200/110x160/90	84 207 1190 73	629.07
280/160x160/90	84 207 1690 73	840.12
280/160x200/110	84 207 1611 73	1087.71

**Spider Clip -
PP**

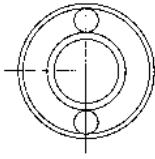


PN6 x PN16/PN10

Size Containment/Carrier	Code	Price
90/32	80 099 9032 17	5.36
125/63	80 099 1263 17	7.78
160/90	80 099 1690 17	8.66
200/110	80 099 2011 17	9.53
280/160	80 099 2816 17	15.56

Pipe - PP x PVDF

5m Lengths



PN6 x PN16

Size Containment/Carrier	Code	Price/M
90/32	81 795 9032 72	79.01
125/63	81 795 1263 72	172.49

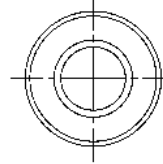
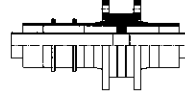
PN6 x PN10

160/90	81 795 1690 73	230.67
200/110	81 795 2011 73	335.51
280/160	81 795 2816 73	673.73

PVDF carrier pipe

Fixed Point Fitting - PP x PVDF

(Dog Bone Type 3)
Isolates Containment



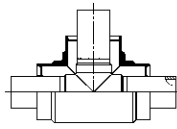
PN6 x PN16

Size Containment/Carrier	Code	Price
90/32	81 239 9032 72	453.88
125/63	81 239 1263 72	603.39

PN6 x PN10

160/90	81 239 1690 73	925.35
200/110	81 239 2011 73	1097.18
280/160	81 239 2816 73	2069.88

Tee 90° - PP x PVDF



PN6 x PN16

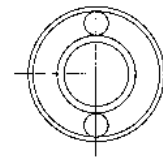
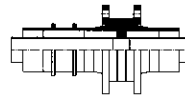
Size Containment/Carrier	Code	Price
90/32	81 206 9032 72	145.44
125/63	81 206 1263 72	330.78

PN6 x PN10

160/90	81 206 1690 73	677.79
200/110	81 206 2011 73	855.00
280/160	81 206 2816 73	2167.29

Fixed Point Fitting - PP x PVDF

(Dog Bone Type 3)
Continues Containment



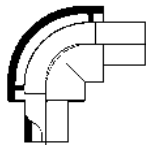
PN6 x PN16

Size Containment/Carrier	Code	Price
90/32	81 249 9032 72	519.51
125/63	81 249 1263 72	671.71

PN6 x PN10

160/90	81 249 1690 73	1003.82
200/110	81 249 2011 73	1175.63
280/160	81 249 2816 73	2167.29

Bend 90° - PP x PVDF



PN6 x PN16

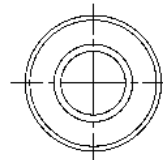
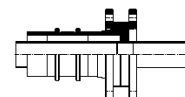
Size Containment/Carrier	Code	Price
90/32	81 201 9032 72	107.70
125/63	81 201 1263 72	273.96

PN6 x PN10

160/90	81 201 1690 73	526.95
200/110	81 201 2011 73	783.31
280/160	81 201 2816 73	2061.76

Fixed Point Fitting - PP x PVDF

(Dog Bone Type 3-A)
Terminates Containment



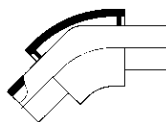
PN6 x PN16

Size Containment/Carrier	Code	Price
90/32	81 238 9032 72	440.36
125/63	81 238 1263 72	577.68

PN6 x PN10

160/90	81 238 1690 73	887.47
200/110	81 238 2011 73	1036.31
280/160	81 238 2816 73	1954.88

Bend 45° - PP x PVDF



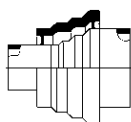
PN6 x PN16

Size Containment/Carrier	Code	Price
90/32	81 202 9032 72	94.03
125/63	81 202 1263 72	248.25

PN6 x PN10

160/90	81 202 1690 73	514.09
200/110	81 202 2011 73	754.91
280/160	81 202 2816 73	2211.93

Concentric Reducer - PP x PVDF



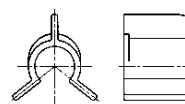
PN6 x PN16

Size Containment/Carrier	Code	Price
125/63x90/32	81 207 6332 72	155.59
160/90x90/32	81 207 9032 72	297.62
160/90x125/63	81 207 9063 72	342.27

PN6 x PN10

200/110x125/63	81 207 1163 73	526.26
200/110x160/90	81 207 1190 73	632.47
280/160x160/90	81 207 1690 73	844.19
280/160x200/110	81 207 1611 73	1091.77

Spider Clip - PP

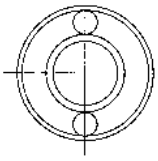


PN6 x PN16/PN10

Size Containment/Carrier	Code	Price
90/32	80 099 9032 17	5.36
125/63	80 099 1263 17	7.78
160/90	80 099 1690 17	8.66
200/110	80 099 2011 17	9.53
280/160	80 099 2816 17	15.56

Pipe - PVDF x PVDF

5m Lengths

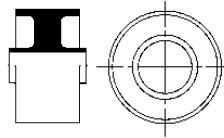


PN10 x PN16

Size Containment/Carrier	Code	Price/M
90/32	85 795 9032 32	on application
110/63	85 795 1263 32	on application
160/90	85 795 1690 32	on application
200/110	85 795 2011 32	on application
250/160	85 795 2516 32	on application

Fixed Point Fitting - PVDF x PVDF
(Dog Bone Type 3)

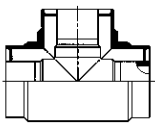
Isolates Containment



PN10 x PN16

Size Containment/Carrier	Code	Price
90/32	85 239 9032 32	on application
110/63	85 239 1263 32	on application
160/90	85 239 1690 32	on application
200/110	85 239 2011 32	on application
250/160	85 239 2516 32	on application

Tee 90° - PVDF x PVDF

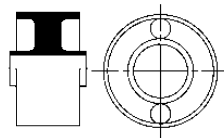


PN10 x PN16

Size Containment/Carrier	Code	Price
90/32	85 206 9032 32	on application
110/63	85 206 1263 32	on application
160/90	85 206 1690 32	on application
200/110	85 206 2011 32	on application
250/160	85 206 2516 32	on application

Fixed Point Fitting - PVDF x PVDF
(Dog Bone Type 3)

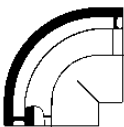
Continues Containment



PN10 x PN16

Size Containment/Carrier	Code	Price
90/32	85 249 9032 32	on application
110/63	85 249 1263 32	on application
160/90	85 249 1690 32	on application
200/110	85 249 2011 32	on application
250/160	85 249 2516 32	on application

Bend 90° - PVDF x PVDF

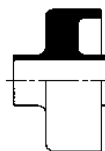


PN10 x PN16

Size Containment/Carrier	Code	Price
90/32	85 201 9032 32	on application
110/63	85 201 1263 32	on application
160/90	85 201 1690 32	on application
200/110	85 201 2011 32	on application
250/160	85 201 2516 32	on application

Fixed Point Fitting - PVDF x PVDF
(Dog Bone Type 3-A)

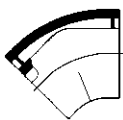
Terminates Containment



PN10 x PN16

Size Containment/Carrier	Code	Price
90/32	85 238 9032 32	on application
110/63	85 238 1263 32	on application
160/90	85 238 1690 32	on application
200/110	85 238 2011 32	on application
250/160	85 238 2516 32	on application

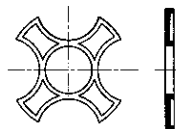
Bend 45° - PVDF x PVDF



PN10 x PN16

Size Containment/Carrier	Code	Price
90/32	85 202 9032 32	on application
110/63	85 202 1263 32	on application
160/90	85 202 1690 32	on application
200/110	85 202 2011 32	on application
250/160	85 202 2516 32	on application

Support Disc - PVDF



PN10 x PN16

Size Containment/Carrier	Code	Price
90/32	85 099 9032 32	on application
110/63	85 099 1263 32	on application
160/90	85 099 1690 32	on application
200/110	85 099 2011 32	on application
250/160	85 099 2516 32	on application

Concentric Reducer - PVDF x PVDF



PN10 x PN16

Size Containment/Carrier	Code	Price
110/63x90/32	85 207 6332 32	on application
160/90x90/32	85 207 9032 32	on application
200/110x110/63	85 207 1163 32	on application
200/110x160/90	85 207 1190 32	on application
250/160x160/90	85 207 1690 32	on application
250/160x200/110	85 207 1611 32	on application

