



DuoSafe systems are manufactured from rigid PVC-U or rigid PVC-C, with containment pipe options including grey or clear PVC-U, PVC-C, ABS or Polyethylene.

They are ideal for above or below ground double containment such as applications found in chemical dosing lines, or to handle a wide range of acids, alcohols, salts and halogens. They are lightweight, rigid and easy to support. DuoSafe PVC-U is suitable for working temperatures up to 60°C. DuoSafe PVC-C may be used at higher temperatures - up to 100°C.

DuoSafe systems are designed for easy installation. Easy access is given to make the first joint on the inner (carrier) pipe, before making the final joint on the outer (containment) pipe. Assembly is faster and joints are more secure. DuoSafe systems are also assembled using a unique solvent cement - Weld-On 724 - which guarantees strong integrity with a wide range of aggressive chemicals.

A second significant benefit is the ease by which pipe cut lengths can be determined using a simple calculation based on the face-to-face measurement between the fittings to be connected. Installation becomes quick and easy.

Several options on pipe pressure ratings are available - up to a maximum 16 bar. For reasons of economy it is usually also possible to reduce the pressure rating of the containment piping without affecting the system integrity.

Systems are available in PVC-U using inch sized piping. It can be specified in the standard dark grey colour, or with a clear PVC-U containment pipe to provide continuous visible monitoring of the system. Additional containment pipe options include ABS, for improved strength on above ground systems.

DuoSafe PVC-C is manufactured in inch sizes in light grey with the option of a clear PVC-U containment pipe.

DuoSafe Inch Systems				
Containment	Carrier	PVC-U	PVC-C	PVC-U
		PVC-U	PVC-C	PVC-C
Pipe Size	Pipe Size			
2"	1/2"	•	•	•
3"	3/4"	•	•	•
3"	1"	•	•	•
4"	1 1/2"	•	•	•
4"	2"	•	•	•
6"	3"	•	•	•

Larger sizes on request

# DuoSafe® PVC-U double containment

## Pipe

6m Lengths



Class C x Class E

Size	Code	Price/Length
2 x 1/2	DCEC-B005-B020	53.34
3 x 3/4	DCEC-B007-B030	84.00
3 x 1	DCEC-B010-B030	89.42
4 x 1 1/2	DCEC-B015-B040	141.73
4 x 2	DCEC-B020-B040	157.20
6 x 3	DCEC-B030-B060	318.89
8 x 4	DCEC-B040-B080	on application

Class E x Class E

Size	Code	Price/Length
2 x 1/2	DCEE-B005-B020	66.10
3 x 3/4	DCEE-B007-B030	110.69
3 x 1	DCEE-B010-B030	116.10
4 x 1 1/2	DCEE-B015-B040	182.32
4 x 2	DCEE-B020-B040	197.13
6 x 3	DCEE-B030-B060	416.81
8 x 4	DCEE-B040-B080	on application

Sch. 40 x Sch. 80

Size	Code	Price/Length
2 x 1/2	DC84-B005-B020	81.56
3 x 3/4	DC84-B007-B030	148.18
3 x 1	DC84-B010-B030	157.84
4 x 1 1/2	DC84-B015-B040	228.71
4 x 2	DC84-B020-B040	248.67
6 x 3	DC84-B030-B060	459.97
8 x 4	DC84-B040-B080	on application

Sch. 80 x Sch. 80

Size	Code	Price/Length
2 x 1/2	DC88-B005-B020	100.89
3 x 3/4	DC88-B007-B030	186.82
3 x 1	DC88-B010-B030	196.50
4 x 1 1/2	DC88-B015-B040	289.89
4 x 2	DC88-B020-B040	309.89
6 x 3	DC88-B030-B060	599.12
8 x 4	DC88-B040-B080	on application

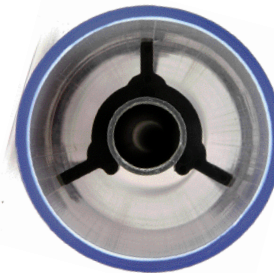
## Clear Pipe

10ft (3m) Lengths



Sch. 40

Size	Code	Price/Foot
2	0400200-PL-1000	8.56
3	0400300-PL-1000	17.70
4	0400400-PL-1000	26.49
6	0400600-PL-1000	48.44
8	0400800-PL-1000	72.51

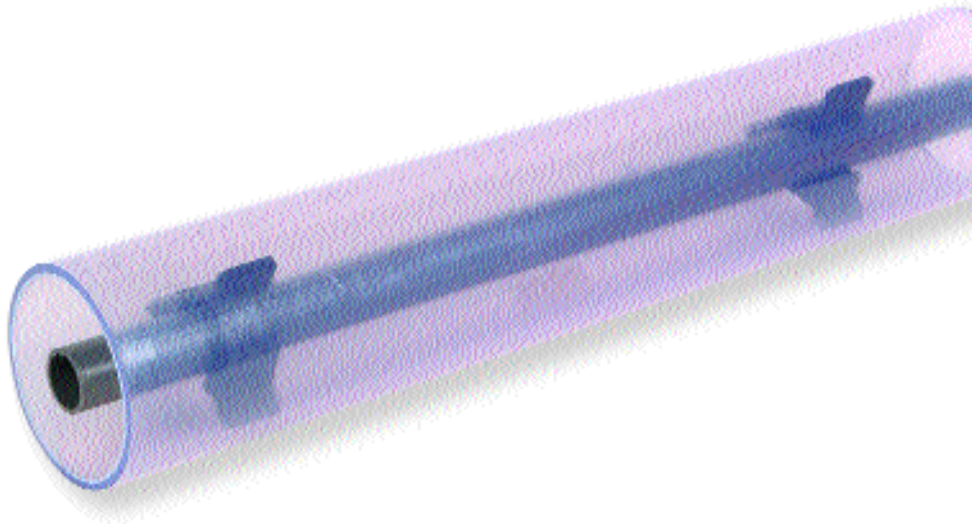


Clear PVC-U pipe is supplied as a single pipe to be used to provide transparent containment sections for visible leak detection.

## Centraliser



Size	Price
2 x 1/2	2.31
3 x 3/4	3.02
3 x 1	3.02
4 x 1 1/2	3.68
4 x 2	3.68
6 x 3	on application
8 x 4	on application



## Pipe Availability

We typically hold over  
**120 miles of pipe**  
in stock for immediate despatch



# DuoSafe® PVC-U double containment

## Tee 90°



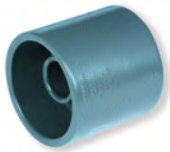
Size	Code	Price
2 x 1/2	DC01-B005-B020	47.45
3 x 3/4	DC01-B007-B030	57.20
3 x 1	DC01-B010-B030	58.55
4 x 1 1/2	DC01-B015-B040	79.26
4 x 2	DC01-B020-B040	83.09
6 x 3	DC01-B030-B060	356.01
8 x 4	DC01-B040-B080	356.01

## Elbow 90°



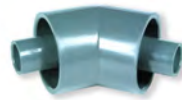
Size	Code	Price
2 x 1/2	DC06-B005-B020	25.06
3 x 3/4	DC06-B007-B030	35.94
3 x 1	DC06-B010-B030	37.29
4 x 1 1/2	DC06-B015-B040	50.56
4 x 2	DC06-B020-B040	52.43
6 x 3	DC06-B030-B060	129.55
8 x 4	DC06-B040-B080	251.19

## Socket



Size	Code	Price
2 x 1/2	DC29-B005-B020	9.20
3 x 3/4	DC29-B007-B030	22.11
3 x 1	DC29-B010-B030	22.21
4 x 1 1/2	DC29-B015-B040	29.26
4 x 2	DC29-B020-B040	29.71
6 x 3	DC29-B030-B060	68.34
8 x 4	DC29-B040-B080	90.99

## Elbow 45°



Size	Code	Price
2 x 1/2	DC17-B005-B020	33.52
3 x 3/4	DC17-B007-B030	56.16
3 x 1	DC17-B010-B030	60.84
4 x 1 1/2	DC17-B015-B040	91.85
4 x 2	DC17-B020-B040	95.53
6 x 3	DC17-B030-B060	159.32
8 x 4	DC17-B040-B080	278.25

## Zoning Fitting



Size	Code	Price
2 x 1/2	DCDB-B005-B020	46.44
3 x 3/4	DCDB-B007-B030	50.87
3 x 1	DCDB-B010-B030	51.92
4 x 1 1/2	DCDB-B015-B040	88.60
4 x 2	DCDB-B020-B040	93.51
6 x 3	DCDB-B030-B060	101.02
8 x 4	DCDB-B040-B080	109.38

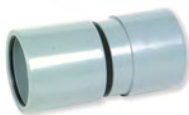
## Termination Fitting

Plain Socket



Size	Code	Price
2 x 1/2	DCTM-B005-B020	63.45
3 x 3/4	DCTM-B007-B030	79.38
3 x 1	DCTM-B010-B030	79.57
4 x 1 1/2	DCTM-B015-B040	91.07
4 x 2	DCTM-B020-B040	94.32
6 x 3	DCTM-B030-B060	153.21
8 x 4	DCTM-B040-B080	190.61

## Closure Fitting



Size	Code	Price
2	DCCF-B020	209.35
3	DCCF-B030	212.94
4	DCCF-B040	219.42
6	DCCF-B060	232.40
8	DCCF-B080	308.10

## Termination Fitting

Flanged



Size	Code	Price
2 x 1/2	DCTF-B005-B020	71.90
3 x 3/4	DCTF-B007-B030	88.04
3 x 1	DCTF-B010-B030	88.81
4 x 1 1/2	DCTF-B015-B040	100.87
4 x 2	DCTF-B020-B040	111.22
6 x 3	DCTF-B030-B060	185.04
8 x 4	DCTF-B040-B080	233.07



### PVC-U and PVC-C Double Containment

This range is developed from the Spears® double containment system. It is unique because it is designed for easy installation. The carrier fittings are supplied loose so that solvent welded joints can be made in a logical, ordered way, eliminating the need to make simultaneous joints on the carrier and containment pipes.

## Ball Valve

Manual Operation



Size	Code	Price
2 x 1/2	DCBV-B005-B020	304.67
3 x 3/4	DCBV-B007-B030	327.21
3 x 1	DCBV-B010-B030	338.60
4 x 1 1/2	DCBV-B015-B040	568.49
4 x 2	DCBV-B020-B040	586.68
6 x 3	DCBV-B030-B060	on application
8 x 4	DCBV-B040-B080	on application

## Leak Detection Tee

With Drain Valve



Size	Code	Price
2 x 1	DCLD-B020	65.08
3 x 1	DCLD-B030	79.81
4 x 1	DCLD-B040	107.76
6 x 1	DCLD-B060	222.79
8 x 1	DCLD-B080	382.44

## Valve Box

Includes valve



Size	Code	Price
2 x 1/2	DCVB-B005-B020	365.67
3 x 3/4	DCVB-B007-B030	438.48
3 x 1	DCVB-B010-B030	450.04
4 x 1 1/2	DCVB-B015-B040	534.39
4 x 2	DCVB-B020-B040	550.84
6 x 3	DCVB-B030-B060	on application
8 x 4	DCVB-B040-B080	on application

## Leak Detection Saddle

With Drain Valve



Size	Code	Price
2 x 1	DCLS-B020	74.77
3 x 1	DCLS-B030	83.73
4 x 1	DCLS-B040	91.25
6 x 1	DCLS-B060	109.90
8 x 1	DCLS-B080	195.27

## Solvent Cement\*

Size	Code	Price
500ml tin	724-301	19.36
Quart (946ml) tin	724-201	34.83

\*The use of Weld-On 724 Cement with this system is a requirement of the warranty.



## Primer

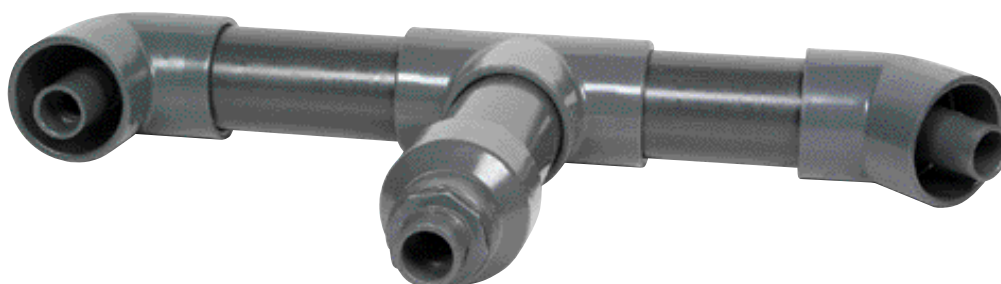
Size	Code	Price
Pint (473ml) tin	770-300	15.03
Quart (946ml) tin	770-200	24.14



All WELD-ON cements, primers and cleaning fluids are now LOW VOC

## Cleaning Fluid

Size	Code	Price
500ml tin	765-300	8.24



# DuoSafe® PVC-C double containment

## Pipe

6m Lengths



Sch. 40 x Sch. 80

Size	Code	Price/Length
2 x 1/2	DC84-C005-C020	150.11
3 x 3/4	DC84-C007-C030	280.89
3 x 1	DC84-C010-C030	300.20
4 x 1 1/2	DC84-C015-C040	418.11
4 x 2	DC84-C020-C040	456.75
6 x 3	DC84-C030-C060	907.06
8 x 4	DC84-C040-C080	on application

Sch. 80 x Sch. 80

Size	Code	Price/Length
2 x 1/2	DC88-C005-C020	181.04
3 x 3/4	DC88-C007-C030	340.80
3 x 1	DC88-C010-C030	360.12
4 x 1 1/2	DC88-C015-C040	528.91
4 x 2	DC88-C020-C040	567.57
6 x 3	DC88-C030-C060	1131.25
8 x 4	DC88-C040-C080	on application

## PVC-U Clear Pipe

10ft (3m) Lengths



Sch. 40

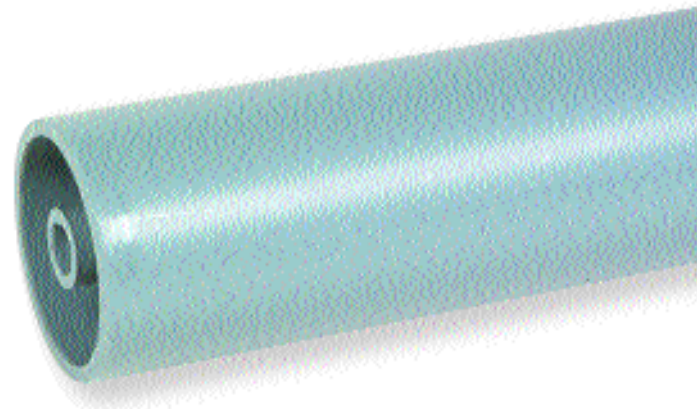
Size	Code	Price/Foot
2	0400200-PL-1000	8.56
3	0400300-PL-1000	17.70
4	0400400-PL-1000	26.49
6	0400600-PL-1000	48.44
8	0400800-PL-1000	72.51

Clear PVC-U pipe is supplied as a single pipe to be used to provide transparent containment sections for visible leak detection.

## Centraliser



Size	Price
2 x 1/2	2.31
3 x 3/4	3.02
3 x 1	3.02
4 x 1 1/2	3.68
4 x 2	3.68
6 x 3	on application
8 x 4	on application



## Tee 90°



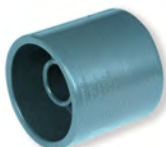
Size	Code	Price
2 x 1/2	DC01-C005-C020	52.56
3 x 3/4	DC01-C007-C030	88.82
3 x 1	DC01-C010-C030	94.41
4 x 1 1/2	DC01-C015-C040	137.64
4 x 2	DC01-C020-C040	143.49
6 x 3	DC01-C030-C060	315.67
8 x 4	DC01-C040-C080	741.94

## Elbow 90°



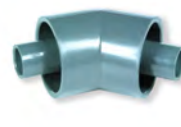
Size	Code	Price
2 x 1/2	DC06-C005-C020	37.29
3 x 3/4	DC06-C007-C030	65.84
3 x 1	DC06-C010-C030	70.62
4 x 1 1/2	DC06-C015-C040	124.58
4 x 2	DC06-C020-C040	132.95
6 x 3	DC06-C030-C060	231.85
8 x 4	DC06-C040-C080	535.17

## Socket



Size	Code	Price
2 x 1/2	DC29-C005-C020	14.57
3 x 3/4	DC29-C007-C030	32.36
3 x 1	DC29-C010-C030	33.74
4 x 1 1/2	DC29-C015-C040	47.30
4 x 2	DC29-C020-C040	48.94
6 x 3	DC29-C030-C060	115.98
8 x 4	DC29-C040-C080	273.98

## Elbow 45°



Size	Code	Price
2 x 1/2	DC17-C005-C020	39.09
3 x 3/4	DC17-C007-C030	70.64
3 x 1	DC17-C010-C030	76.23
4 x 1 1/2	DC17-C015-C040	110.16
4 x 2	DC17-C020-C040	121.18
6 x 3	DC17-C030-C060	275.26
8 x 4	DC17-C040-C080	550.45

## Zoning Fitting



Size	Code	Price
2 x 1/2	DCDB-C005-C020	46.97
3 x 3/4	DCDB-C007-C030	51.92
3 x 1	DCDB-C010-B030	109.17
4 x 1 1/2	DCDB-C015-C040	118.57
4 x 2	DCDB-C020-C040	132.74
6 x 3	DCDB-C030-C060	172.14
8 x 4	DCDB-C040-C080	175.56

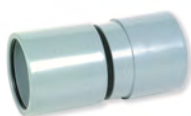
## Termination Fitting

Plain Socket



Size	Code	Price
2 x 1/2	DCTM-C005-C020	95.99
3 x 3/4	DCTM-C007-C030	98.09
3 x 1	DCTM-C010-C030	100.86
4 x 1 1/2	DCTM-C015-C040	127.67
4 x 2	DCTM-C020-C040	133.30
6 x 3	DCTM-C030-C060	241.45
8 x 4	DCTM-C040-C080	431.62

## Closure Fitting



Size	Code	Price
2	DCCF-C020	210.44
3	DCCF-C030	221.40
4	DCCF-C040	231.07
6	DCCF-C060	281.66
8	DCCF-C080	378.90

## Termination Fitting

Flanged



Size	Code	Price
2 x 1/2	DCTF-C005-C020	106.52
3 x 3/4	DCTF-C007-C030	109.24
3 x 1	DCTF-C010-C030	113.45
4 x 1 1/2	DCTF-C015-C040	145.14
4 x 2	DCTF-C020-C040	155.44
6 x 3	DCTF-C030-C060	288.09
8 x 4	DCTF-C040-C080	496.99

## Ball Valve

Manual Operation



Size	Code	Price
2 x 1/2	DCBV-C005-C020	457.04
3 x 3/4	DCBV-C007-C030	471.88
3 x 1	DCBV-C010-C030	494.69
4 x 1 1/2	DCBV-C015-C040	889.34
4 x 2	DCBV-C020-C040	939.19
6 x 3	DCBV-C030-C060	on application
8 x 4	DCBV-C040-C080	on application

## Leak Detection Tee

With Drain Valve



Size	Code	Price
2 x 1	DCLD-C020	85.06
3 x 1	DCLD-C030	135.70
4 x 1	DCLD-C040	173.61
6 x 1	DCLD-C060	418.62
8 x 1	DCLD-C080	569.71

## Valve Box

Includes valve



Size	Code	Price
2 x 1/2	DCVB-C005-C020	on application
3 x 3/4	DCVB-C007-C030	on application
3 x 1	DCVB-C010-C030	on application
4 x 1 1/2	DCVB-C015-C040	on application
4 x 2	DCVB-C020-C040	on application
6 x 3	DCVB-C030-C060	on application
8 x 4	DCVB-C040-C080	on application

## Leak Detection Saddle

With Drain Valve



Size	Code	Price
2 x 1	DCLS-C020	86.30
3 x 1	DCLS-C030	98.69
4 x 1	DCLS-C040	109.00
6 x 1	DCLS-C060	150.29
8 x 1	DCLS-C080	278.94

## Solvent Cement\*

Size	Code	Price
500ml tin	724-301	19.36
Quart (946ml) tin	724-201	34.83

\*The use of Weld-On 724 Cement with this system is a requirement of the warranty.

## Primer

Size	Code	Price
Pint (473ml) tin	770-300	15.03
Quart (946ml) tin	770-200	24.14

## Cleaning Fluid

Size	Code	Price
500ml tin	765-300	8.24

 DuoSafe® FLEX

DuoSafe FLEX is engineered for applications where long, continuous lengths of small diameter pipe is required. It is ideal for dosing applications such as in water treatment where there may be multiple dosing points drawing from a single chemical storage unit.

DuoSafe FLEX is developed in conjunction with Copely Developments - one of the pioneers in the development of flexible pipe systems, and the inventors of the first open mesh PVC hose in 1950.

The system uses high quality flexibles that are manufactured as double contained products in a single extrusion process. They are supplied either in standard coil lengths of up to 300 metres, or may be cut to specific shorter lengths or specially manufactured in longer coils should the job require it. Connections between lengths or at termination points are made using a special range of rigid PVC-U fittings.

There are two types of flexible carrier hose available - Aquachem and Hydrachem - each offering strong resistance to a wide range of dosing chemicals. The carrier (dosing) tube is manufactured in sizes from DN 6mm up to DN 38mm, with a maximum working pressure of 10 bar.



DuoSafe FLEX Systems			
Containment Hose ID	Carrier Hose ID	Aquachem	Hydrachem
19mm	6.3mm	•	•
25mm	10.0mm	•	•
25mm	12.5mm	•	•
32mm	19.0mm	•	•
38mm	25.0mm	•	•
50mm	31.5mm	•	•
60mm	38.0mm	•	•

## DuoSafe FLEX Aquachem Double Containment Hose

Code	Carrier Hose Size		Containment Hose Size		Price per Metre
	I.D. (mm)	O.D. (mm)	I.D. (mm)	O.D. (mm)	
PRH 06 / C25	6.3	12.0	19.0	25.0	17.12
PRH 10 / C25	10.0	16.0	25.0	31.0	20.52
PRH 12 / C25	12.5	19.0	25.0	31.0	23.61
PRH 19 / C325	19.0	26.0	32.0	42.0	26.63
PRH 25 / C385	25.0	33.0	38.0	48.0	29.83
PRH 32 / C506	31.5	41.0	50.0	62.0	40.36
PRH 38 / C606	38.0	48.5	60.0	72.0	48.72

Colour: White Carrier Hose with Clear Blue Tint Containment Hose

## DuoSafe FLEX Hydrachem Double Containment Hose

Code	Carrier Hose Size		Containment Hose Size		Price per Metre
	I.D. (mm)	O.D. (mm)	I.D. (mm)	O.D. (mm)	
EVC 06 / C25	6.3	12.0	19.0	25.0	17.12
EVC 10 / C25	10.0	16.0	25.0	31.0	20.52
EVC 12 / C25	12.5	19.0	25.0	31.0	23.61
EVC 19 / C325	19.0	26.0	32.0	42.0	26.63
EVC 25 / C385	25.0	33.0	38.0	48.0	29.83
EVC 32 / C506	31.5	41.0	50.0	62.0	40.36
EVC 38 / C606	38.0	48.5	60.0	72.0	48.72

Colour: White Carrier Hose with Clear Blue Tint Containment Hose



## DuoSafe Flex Fittings

### Dosing Connector

Terminates inner hose



Hose Size	Thread Size	Code	Price
6.3	1/2 Male	PHR 06 DOS	25.42
10.0	1/2 Male	PHR 10 DOS	26.88
12.5	1/2 Male	PHR 12 DOS	27.16
19.0	3/4 Female	PHR 19 DOS	29.37
25.0	1 Female	PHR 25 DOS	30.23
31.5	1 1/4 Female	PHR 31 DOS	50.49
38.0	1 1/2 Female	PHR 38 DOS	71.09

Colour: Grey PVC-U

Complete with stainless steel compression bands

### Double Connector

Terminates inner and outer hose. Provides threaded connection to inner hose



Inner Hose	Outer Hose	Thread Size	Code	Price
6.3	19.0	1/2 Male	PHR 06 DUAL	33.75
10.0	25.0	1/2 Male	PHR 10 DUAL	35.28
12.5	25.0	1/2 Male	PHR 12 DUAL	37.25
19.0	32.0	3/4 Female	PHR 19 DUAL	39.89
25.0	38.0	1 Female	PHR 25 DUAL	41.63
31.5	50.0	1 1/4 Female	PHR 31 DUAL	69.29
38.0	60.0	1 1/2 Female	PHR 38 DUAL	96.90

Colour: Grey PVC-U

Complete with stainless steel compression bands

### Outer Termination

Terminates outer hose only. Male solvent weld spigot connection



Hose Size	Spigot Size	Code	Price
19.0	20mm	PHR 06 OT	26.65
25.0	25mm	PHR 10/12 OT	27.16
32.0	32mm	PHR 19 OT	29.37
38.0	40mm	PHR 25 OT	30.23
50.0	50mm	PHR 31 OT	50.49
60.0	63mm	PHR 38 OT	71.09

Colour: Grey PVC-U

Complete with stainless steel compression bands

## Compression Tool

Heavy duty model



Code	Price
14 1000 30	79.76