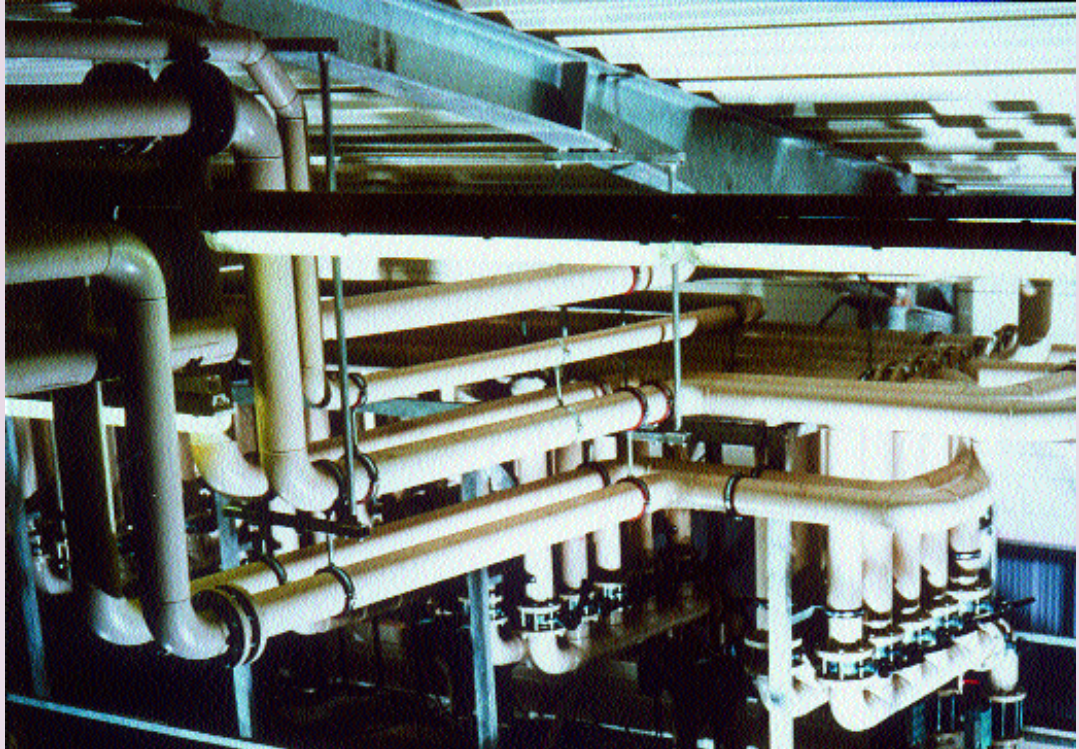


pipes and fittings - metric sizes

AGRU High Purity Polypropylene systems offer high strength, very good chemical resistance and non-toxicity for less critical high purity applications such as DI water return lines.

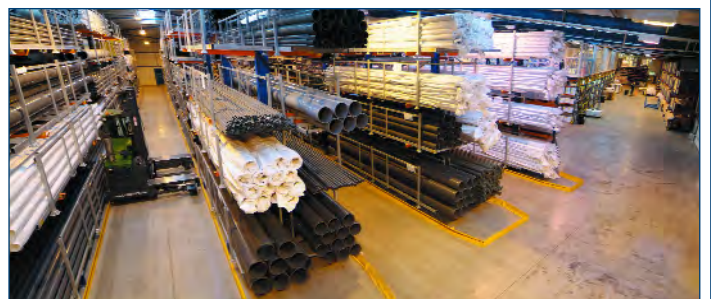
High Purity Polypropylene (PP-Pure) pipes are manufactured from beige grey virgin PP material on specifically designated equipment. The pipes are then cleaned and packaged in clean room class 10,000 conditions. Moulded fittings are cleaned in an automatic cleaning facility under class 100 clean room conditions, then double packaged for shipment.

PP-Pure systems can be joined using AGRU butt fusion, socket fusion, or IR non-contact butt welding equipment. Details are shown in the tools and installation equipment section.



Pipe Availability

We typically hold over
120 miles of pipe
in stock for immediate despatch

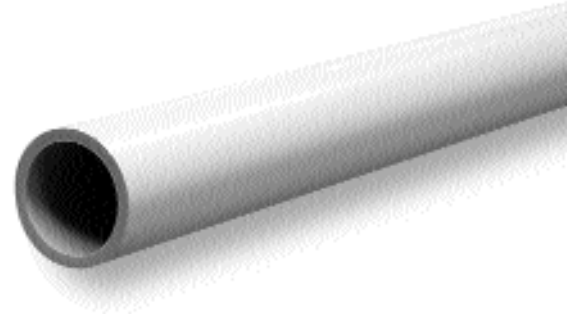


Pipe

SDR11/S-5/PN10

Size	Wall	kg/m	Code	Price/m
20	2.5	0.14	72 705 0020 11	3.93
25	2.7	0.19	72 705 0025 11	5.39
32	3.0	0.27	72 705 0032 11	7.59
40	3.7	0.41	72 705 0040 11	9.39
50	4.6	0.64	72 705 0050 11	14.62
63	5.8	1.0	72 705 0063 11	23.04
75	6.9	1.4	72 705 0075 11	31.86
90	8.2	2.0	72 705 0090 11	45.93
110	10.0	3.0	72 705 0110 11	68.39
125	11.4	3.9	72 705 0125 11	88.40
140	12.8	4.9	72 705 0140 11	110.45
160	14.6	6.4	72 705 0160 11	144.76
180	16.4	8.1	72 705 0180 11	162.70
200	18.2	9.9	72 705 0200 11	200.62
225	20.5	12.6	72 705 0225 11	254.39
250	22.8	15.5	72 705 0250 11	312.98
280	25.5	19.5	72 705 0280 11	391.57
315	28.7	24.6	72 705 0315 11	496.35

Standard length 5 metres.



Pipework Support

Polypropylene pipework requires more support than for metallic systems. As working temperature increases, the distance between supports is reduced.

Pipe Size	Support Centres/m		
	20°C	60°C	100°C
20	0.80	0.65	0.45
25	0.85	0.75	0.50
32	1.00	0.85	0.55
40	1.10	0.95	0.60
50	1.25	1.05	0.70
63	1.40	1.20	0.80
75	1.55	1.30	0.85
90	1.65	1.45	0.95
110	1.85	1.60	1.05
125	2.00	1.70	1.10
140	2.10	1.80	1.15
160	2.25	1.90	1.25
180	2.40	2.00	1.30
200	2.50	2.15	1.35
225	2.65	2.30	1.45
250	2.75	2.35	1.50
280	2.90	2.45	1.60
315	3.05	2.60	1.65
355	3.20	2.70	1.75
400	3.40	2.90	1.85



Pipe Supports

Pipe Supports should be free of sharp edges which can damage a pipe wall. Care should also be taken to ensure that supports allow for expansion and contraction of the pipe without restraint.