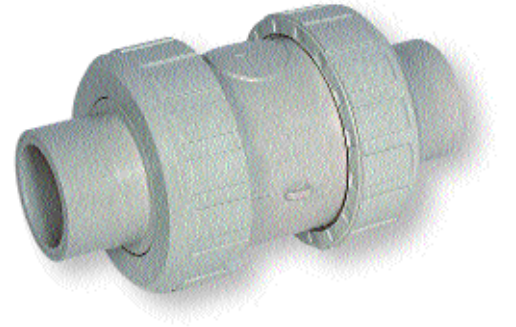


PP-Pure Check (Non-Return) Valve

Description: In-line spring weighted cone check valve
Mounting: In any position
Maximum Fluid Pressure at 20°C: Sizes 16mm to 75mm - 10 bar;
 Size 90mm - 6 bar
Fluid Temperature Range: 0°C - 80°C
Construction:
Body: Polypropylene HP
Seals: FPM or EPDM
Spring: Stainless steel sleeved in PTFE
End Connections: Fusion spigots, fusion sockets, BSP female threaded or flanged BS4504 EN1072 PN10



Fusion Spigots

FPM Seals	Size	Code	Price
	20	72 336 1320 11	99.97
	25	72 336 1325 11	118.30
	32	72 336 1332 11	136.91
	40	72 336 1340 11	164.77
	50	72 336 1350 11	201.31
	63	72 336 1363 11	267.48
	75	72 336 1375 11	631.48

Also available as an air release or foot valve and with Fusion Socket, BSP Female Threaded or Flanged connections. Please enquire for details.

PP-Pure Wafer Check Valve

Description: Wafer style flap check valve
Mounting: In any position, between flanges to BS4504 EN1072 PN10.
 Optional spring return for mounting in horizontal position or for pulsating flow.
Maximum Fluid Pressure at 20°C: 10 bar
Fluid Temperature Range: 0°C - 80°C
Construction:
Body: Polypropylene HP
Seals: FPM
Spring (optional): Stainless steel, PTFE coated
End Connections: Flange mounted (flanges not included)



No Spring Return

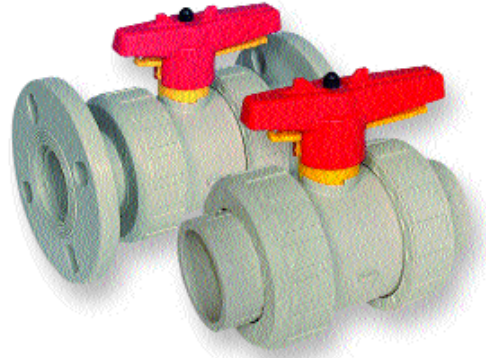
FPM Seals	Size	Code	Price
	40	72 339 1340 11	291.61
	50	72 339 1350 11	301.96
	63	72 339 1363 11	356.41
	75	72 339 1375 11	359.86
	90	72 339 1390 11	415.00
	110	72 339 1311 11	522.55
	140	72 339 1314 11	612.86
	160	72 339 1316 11	563.22
	225	72 339 1322 11	1431.14
	280	72 339 1328 11	1986.77
	315	72 339 1331 11	2536.91

Stainless Steel Spring Return

FPM Seals	Size	Code	Price
	40	72 339 1140 11	497.06
	50	72 339 1150 11	506.70
	63	72 339 1163 11	541.16
	75	72 339 1175 11	543.23
	90	72 339 1190 11	650.08
	110	72 339 1111 11	762.45
	140	72 339 1114 11	900.33
	160	72 339 1116 11	1061.64
	225	72 339 1122 11	1596.60
	280	72 339 1128 11	2356.27
	315	72 339 1131 11	3098.06

PP-Pure Ball Valve

Description: In-line double union ball valve with lockable handle
Mounting: In any position
Maximum Fluid Pressure at 20°C: Sizes 16mm to 75mm - 10 bar; Size 90mm - 6 bar
Fluid Temperature Range: 0°C - 80°C
Construction:
Body: Polypropylene HP **Seals:** FPM or EPDM **Seats:** PTFE
End Connections: Fusion sockets, fusion spigots, BSP female threaded or flanged BS4504 EN1072 PN10



Fusion Spigots

	Size	Code	Price
FPM Seals	20	72 335 1520 11	97.49
PTFE Seats	25	72 335 1525 11	116.64
	32	72 335 1532 11	131.39
	40	72 335 1540 11	165.45
	50	72 335 1550 11	206.13
	63	72 335 1563 11	261.29
	75	72 335 1575 11	594.24

Also available with Fusion Socket, BSP Female Threaded or Flanged connections. Please enquire for details.

PP-Pure Diaphragm Valve

Description: In-line diaphragm valve
Mounting: In any position
Maximum Fluid Pressure at 20°C: 10 bar
Fluid Temperature Range: 0°C - 80°C
Construction:
Body: Polypropylene HP **Diaphragm:** PTFE (EPDM Backed)
End Connections: Fusion spigots or flanged BS4504 EN1072 PN10



Flanged BS4504 PN10

	Size	Code	Price
PTFE Diaphragm	20	72 242 1520 11	290.92
	25	72 242 1525 11	316.43
	32	72 242 1532 11	373.64
	40	72 342 1740 11	469.48
	50	72 342 1750 11	583.21
	63	72 342 1763 11	729.35
	75	72 242 1575 11	1063.02
	90	72 342 1790 11	1378.76
	110	72 342 1711 11	2039.18
	140	72 342 1714 11	2769.91

Fusion Spigots

	Size	Code	Price
PTFE Diaphragm	20	72 342 1520 11	233.01
	25	72 342 1525 11	248.18
	32	72 342 1532 11	287.48
	40	72 342 1540 11	363.31
	50	72 342 1550 11	437.06
	63	72 342 1563 11	554.96
	75	72 342 1575 11	999.60
	90	72 342 1590 11	1060.26
	110	72 342 1511 11	1631.07

Fusion Spigots - Union

	Size	Code	Price
PTFE Diaphragm	20	72 340 0020 11	253.01
	25	72 340 0025 11	272.32
	32	72 340 0032 11	299.19
	40	72 340 0040 11	386.76
	50	72 340 0050 11	463.26
	63	72 340 0063 11	565.29

PP-Pure T-Diaphragm Valve

Description: Diaphragm valve on T-branch with position indicator
Mounting: In any position (usually horizontal on the run)
Maximum Fluid Pressure at 20°C: 10 bar
Fluid Temperature Range: 0°C - 80°C
Construction:
Body: Polypropylene HP **Diaphragm:** PTFE (EPDM Backed)
End Connections: Fusion spigots

Fusion Spigots

	Size	Code	Price
PTFE Diaphragm	40/20	72 343 4021 11	454.30
	40/25	72 343 4026 11	454.30
	40/32	72 343 4033 11	454.30

