

## Agru Diaphragm Valve

**Description:** In-line diaphragm valve with position indicator

**Mounting:** In any position

**Maximum Fluid Pressure at 20°C:** 10 bar

**Fluid Temperature Range:** 0°C - 120°C

**Construction:**

**Body:** PVDF-HP

**Diaphragm:** PTFE (EPDM Backed) or EPDM

**End Connections:** Fusion spigots, flanged BS4504 EN1072 PN10



### Fusion Spigots

PTFE Diaphragm (EPDM Backed)	Size	Code	Price
	20	35 342 1020 21	177.53
	25	35 342 1025 21	189.16
	32	35 342 1032 21	209.63
	40	35 342 1040 21	298.41
	50	35 342 1050 21	359.16
	63	35 342 1063 21	454.77
	75	35 342 1075 21	1257.72
	90	35 342 1090 21	1489.89
	110	35 342 1011 21	1798.52

### Fusion Spigots - Union

PTFE Diaphragm	Size	Code	Price
	20	35 340 0020 21	213.02
	25	35 340 0025 21	236.27
	32	35 340 0032 21	273.82
	40	35 340 0040 21	368.72
	50	35 340 0050 21	445.88
	63	35 340 0063 21	591.32

### Flanged BS4504 PN10

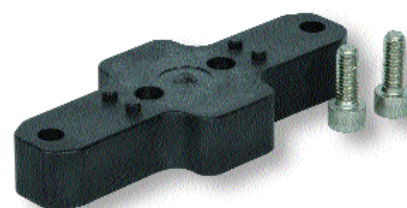
PTFE Diaphragm	Size	Code	Price
	20	35 242 1020 21	213.02
	25	35 242 1025 21	236.27
	32	35 242 1032 21	273.82
	40	35 342 2040 21	368.72
	50	35 342 2050 21	445.88
	63	35 342 2063 21	591.32
	75	35 242 1075 21	1257.72
	90	35 342 2090 21	1670.16
	110	35 342 2011 21	2232.79
	140	35 342 2014 21	2892.38

## Diaphragm Valve Mounting Plate

- Ensures clearance of union nut from mounting surface
- Complete with two fixing screws

valve size	thickness (mm)	code	price
20	16.0	14 0103	5.20
25	23.0	14 0102	5.20
32	23.0	14 0102	5.20
40	18.5	14 0123	8.45
50	23.5	14 0109	8.45
63	23.5	14 0109	8.45

Also suitable for use with T-Diaphragm valve.





## Agru Ball Valve

**Description:** In-line double union ball valve with lockable handle  
**Mounting:** In any position  
**Maximum Fluid Pressure at 20°C:** Sizes 16mm to 75mm - 16 bar;  
 Sizes 90mm to 110mm - 10 bar  
**Fluid Temperature Range:** 0°C - 120°C  
**Construction:**  
**Body:** PVDF-HP  
**Seals:** FPM  
**Seats:** PTFE  
**End Connections:** Fusion spigots, flanged BS4504 PN10

### Fusion Spigots

	Size	Code	Price
FPM Seals	20	35 335 1520 21	101.60
PTFE Seats	25	35 335 1525 21	131.10
	32	35 335 1532 21	167.98
	40	35 335 1540 21	221.93
	50	35 335 1550 21	314.78
	63	35 335 1563 21	435.63
	75	35 335 1575 21	748.37
	90	35 335 1590 33	990.07

### Flanged BS4504 PN10/16

	Size	Code	Price
FPM Seals	20	35 335 1720 21	221.93
PTFE Seats	25	35 335 1725 21	271.09
	32	35 335 1732 21	333.90
	40	35 335 1740 21	424.02
	50	35 335 1750 21	588.58
	63	35 335 1763 21	786.59
	75	35 335 1775 21	1326.01
	90	35 335 1790 33	1865.43



## Agru Laboratory/Sampling Ball Valve

**Description:** In-line ball valve for laboratory or sampling use  
**Mounting:** In any position  
**Maximum Fluid Pressure at 20°C:** 10 bar  
**Fluid Temperature Range:** 0°C - 120°C  
**Construction:**  
**Body:** PVDF-HP  
**Seals:** FPM  
**Seats:** PTFE  
**End Connections:** 1/4" R or NPT Threaded; Hose Connection included



Connections	Size	Code	Price
R Male x Female	1/4"	35 337 0000 11	18.30
NPT Male x Female	1/4"	35 337 1000 11	18.30

## Agru T-Diaphragm Valve

**Description:** Diaphragm valve on T branch with position indicator

**Mounting:** In any position (usually horizontal on the run)

**Maximum Fluid Pressure at 20°C:** 10 bar

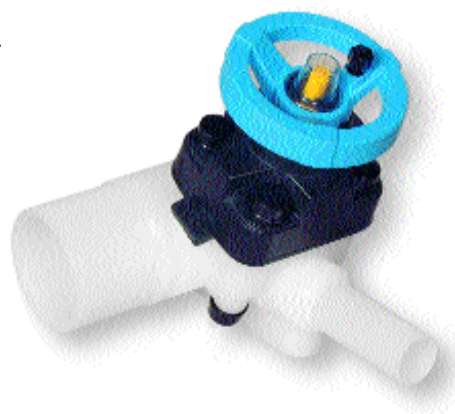
**Fluid Temperature Range:** 0°C - 120°C

**Construction:**

**Body:** PVDF-HP

**Diaphragm:** PTFE (EPDM backed)

**End Connections:** Fusion Spigots



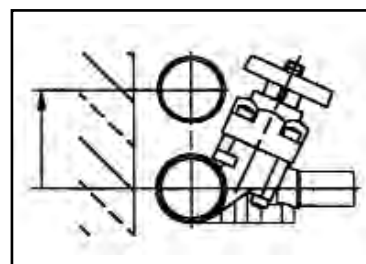
### Fusion Spigots

PTFE Diaphragm  
(EPDM Backed)

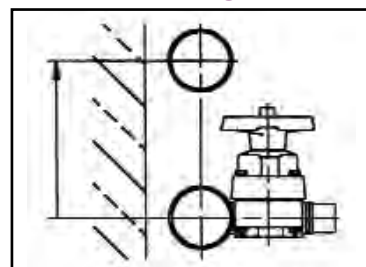
Size	Code	Price
20/20	35 343 2020 21	283.38
25/20	35 343 2520 21	283.38
25/25	35 343 2525 21	283.38
32/20	35 343 3220 21	339.36
32/25	35 343 3225 21	339.36
32/32	35 343 3232 21	339.36
40/20	35 343 4020 21	393.99
40/25	35 343 4025 21	393.99
40/32	35 343 4032 21	393.99
50/20	35 343 5020 21	417.88
50/25	35 343 5025 21	417.88
50/32	35 343 5032 21	417.88
63/20	35 343 6320 21	454.08
63/25	35 343 6325 21	454.08
63/32	35 343 6332 21	454.08
63/40	35 343 6340 21	746.99
63/50	35 343 6350 21	746.99
63/63	35 343 6363 21	746.99
75/25	35 343 7525 21	722.41
75/32	35 343 7532 21	722.41
75/40	35 343 7540 21	904.04
75/50	35 343 7550 21	904.04
75/63	35 343 7563 21	904.04
90/25	35 343 9025 21	966.86
90/25	35 343 9025 31*	858.97
90/32	35 343 9032 21	966.86
90/32	35 343 9032 31*	858.97
90/40	35 343 9040 21	1179.91
90/40	35 343 9040 31*	1119.81
90/50	35 343 9050 21	1179.91
90/50	35 343 9050 31*	1119.81
90/63	35 343 9063 21	1179.91
90/63	35 343 9063 31*	1119.81
110/25	35 343 1125 21	1080.21
110/25	35 343 1125 31*	1025.59
110/32	35 343 1132 21	1080.21
110/32	35 343 1132 31*	1025.59
110/50	35 343 1150 21	1298.70
110/50	35 343 1150 31*	1234.52
110/63	35 343 1163 21	1536.32
110/63	35 343 1163 31*	1234.52

The wall thickness of the spigot is in accordance with PN16 except for \* which has PN10 on the run and PN16 on the branch.

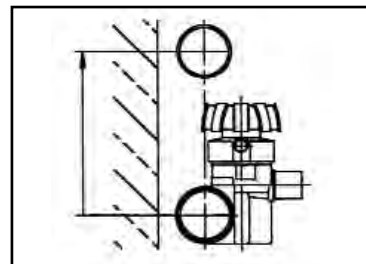
### AGRU T-DIAPHRAGM VALVE



### Conventional Design



### Conventional Design



Also available with rinsing branch.  
Enquire for details.

## Agru Check (Non-Return) Valve

**Description:** In-line spring weighted cone check valve  
**Mounting:** In any position  
**Maximum Fluid Pressure at 20°C:** Sizes 16mm to 75mm - 16 bar;  
 Size 90mm - 10 bar  
**Fluid Temperature Range:** 0°C - 120°C  
**Construction:**  
**Body:** PVDF-HP  
**Seals:** FPM  
**Spring:** Stainless Steel sleeved in PTFE  
**End Connections:** Fusion spigots



### Fusion Spigots

PTFE Seals	Size	Code	Price
	20	35 336 1520 21	156.37
	25	35 336 1525 21	197.35
	32	35 336 1532 21	231.48
	40	35 336 1540 21	338.68
	50	35 336 1550 21	435.63
	63	35 336 1563 21	585.19
	75	35 336 1575 21	849.41
	90	35 336 1590 33	1117.08

## Agru Wafer Check Valve

**Description:** Wafer style flap check valve  
**Mounting:** In any position, between flanges to BS4504  
 EN1072 PN10. Optional spring return for mounting in  
 horizontal position or for pulsating flow.  
**Maximum Fluid Pressure at 20°C:** 10 bar  
**Fluid Temperature Range:** 0°C - 120°C  
**Construction:**  
**Body:** PVDF-HP  
**Seals:** FPM  
**Spring (optional):** Stainless Steel, PTFE coated  
**End Connections:** Flange mounted (flanges not included)



### No Spring Return

FPM Seals	Size	Code	Price
	40	35 339 3040 33	256.75
	50	35 339 3050 33	262.19
	63	35 339 3063 33	283.38
	75	35 339 3075 33	327.06
	90	35 339 3090 33	393.30
	110	35 339 3110 33	541.47
	125	35 339 3125 33	741.54
	140	35 339 3140 33	741.54
	160	35 339 3160 33	1029.68
	180	35 339 3180 33	1029.68
	225	35 339 3225 33	2455.39
	280	35 339 3280 33	2754.44

### Stainless Steel Spring Return

FPM Seals	Size	Code	Price
	40	35 339 1040 33	356.42
	50	35 339 1050 33	361.21
	63	35 339 1063 33	386.46
	75	35 339 1075 33	436.32
	90	35 339 1090 33	514.16
	110	35 339 1110 33	668.48
	125	35 339 1125 33	908.15
	140	35 339 1140 33	908.15
	160	35 339 1160 33	1197.64
	180	35 339 1180 33	1197.64
	225	35 339 1225 33	2515.46
	280	35 339 1280 33	2844.60