

Praher Type S4 Electrically Actuated Ball Valve

Description: In-line ball valve with electric actuator

Mounting: In any position

Maximum Fluid Pressure at 20°C: Sizes up to 63mm - 10 bar;
75mm - 6 bar; 90mm - 5 bar; 110mm - 4 bar

Fluid Temperature Range: 0°C-80°C

Construction:

Body: Polypropylene

Seals: EPDM or FPM

Seats: PTFE

End Connections: Fusion Sockets, Fusion Spigots, BSP Threaded,
Flanged BS4504 EN1072 PN10

Actuation:

Housing Material: Plastic with epoxy coated aluminium base

Voltages: 240v AC; 110v AC; 24v AC; 110v DC; 24v DC; 12v DC

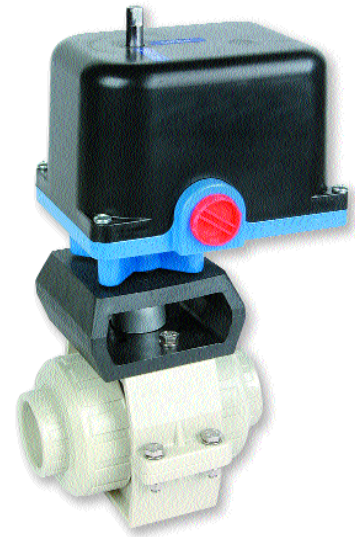
Frequency Range: 50/60 Hz

Protection: IP65

Manual Override: Optional

Position Indicator: Included

Contacts: Open, closed. Additional contacts optional.



MM Fusion Sockets

110v ac
EPDM Seals
PTFE Seats

Size	Part No.	Material	Price
16	12 1378	E2AG	529.74
20	12 1379	E2AG	531.22
25	12 1381	E2AG	542.04
32	12 1383	E2AG	550.90
40	12 1385	E2AG	569.79
50	12 1387	E2AG	591.77
63	12 1389	E2AG	621.23
75	12 1391	E2AG	990.07
90	12 1393	E2AG	1148.82
110	12 2094	E2AG	1218.49

MM Fusion Sockets

110v ac
FPM Seals
PTFE Seats

Size	Part No.	Material	Price
16	12 1377	E2AG	536.43
20	12 1412	E2AG	538.71
25	12 1380	E2AG	551.16
32	12 1382	E2AG	561.88
40	12 1384	E2AG	582.39
50	12 1386	E2AG	605.82
63	12 1388	E2AG	637.98
75	12 1390	E2AG	1022.89
90	12 1392	E2AG	1197.72
110	12 2115	E2AG	1281.45

Electric Actuated Valve Options

Option	Price
Switch Options	
Open/Closed	included
Open/Closed plus 2 x extra volt free	88.20
Actuator Options	
Reversible actuator with manual override	standard
Uni-directional actuator without manual override	on application
Customer specification actuator	on application
EEXD version actuator	on application
Power Options	
110v AC	standard
240v AC	free option
24v DC	on application
24v AC	on application
Extra Options	
Heater and thermostat	on application
4 - 20Ma positioner	on application
Fail-Safe operation	on application

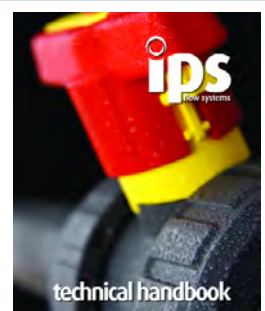
Pneumatic Actuated Valve Options

Option	Price
Body Material Options	
Technopolymer	standard
Hard anodised aluminium	free option
Stainless steel	on application
Double pack epoxy coated	on application
Switchbox Options (with beacon)	
IP65 Technopolymer 2 x mechanical switches	82.52
IP65 Technopolymer 2 x proximity switches EEXIA	322.78
IP67 Polycarbonate 2 x V3 gold plated switches	111.64
IP67 Polycarbonate 2 x V3 gold plated switches EEXIA	174.73
IP67 Polycarbonate 2 x proximity switches EEXIA	279.09
IP67 Aluminium 2 x V3 gold plated switches EEXD	291.23
Solenoid Valve Options	
240v AC Solenoid	84.93
110v AC Solenoid	84.93
24v DC Solenoid	84.93
24v AC Solenoid	84.93

Technical Resources

Try our online technical catalogue
www.ipsflowsystems.com

Or call our technical team on:
0800 975 79 71



Praher Type S4 Pneumatically Actuated Ball Valve

Description: In-line ball valve with pneumatic operation

Mounting: In any position

Maximum Fluid Pressure at 20°C: Sizes up to 75mm - 10 bar;

Sizes 90mm and 110mm - 6 bar

Fluid Temperature Range: 0°C-80°C

Construction:

Body: Polypropylene

Seals: EPDM or FPM

Seats: PTFE

End Connections: Fusion Sockets, Fusion Spigots, BSP Threaded, Flanged BS4504 EN1072 PN10

Actuation:

Housing Material: Plastic (optional aluminium)

Air Actuators: Fail-safe close, Fail-safe open, double acting

Protection: IP65

Manual Override: Optional

Position Indicator: Included

Contacts: Optional limit switch box with two mechanical switches

Pilot Valve: Solenoid, not included



MM Fusion Sockets

Fail-safe Close	16	12 1378 P1A	279.28
EPDM Seals	20	12 1379 P1A	281.02
PTFE Seats	25	12 1381 P1A	291.29
	32	12 1383 P1A	299.83
	40	12 1385 P1A	346.74
	50	12 1387 P1A	368.53
	63	12 1389 P1A	457.65
	75	12 1391 P1A	677.13
	90	12 1393 P1A	901.50
	110	12 2094 P1A	1058.38

MM Fusion Sockets

Fail-safe Close	16	12 1377 P1A	286.44
FPM Seals	20	12 1412 P1A	288.32
PTFE Seats	25	12 1380 P1A	300.65
	32	12 1382 P1A	310.76
	40	12 1384 P1A	359.60
	50	12 1386 P1A	383.00
	63	12 1388 P1A	474.68
	75	12 1390 P1A	710.26
	90	12 1392 P1A	950.85
	110	12 2115 P1A	1121.26

MM Fusion Spigots

Fail-safe Close	16	12 1430 P1A	279.28
EPDM Seals	20	12 1432 P1A	281.02
PTFE Seats	25	12 1434 P1A	291.29
	32	12 1436 P1A	299.83
	40	12 1438 P1A	346.74
	50	12 1440 P1A	368.53
	63	12 1442 P1A	457.65
	75	12 1444 P1A	677.13
	90	12 1446 P1A	901.50
	110	12 2508 P1A	1058.38

MM Fusion Spigots

Fail-safe Close	16	12 1431 P1A	286.44
FPM Seals	20	12 1433 P1A	288.32
PTFE Seats	25	12 1435 P1A	300.65
	32	12 1437 P1A	310.76
	40	12 1439 P1A	359.60
	50	12 1441 P1A	383.00
	63	12 1443 P1A	474.68
	75	12 1445 P1A	710.26
	90	12 1447 P1A	950.85
	110	12 2509 P1A	1121.26

MM Fusion Sockets

Double Acting	16	12 1378 P3A	258.98
EPDM Seals	20	12 1379 P3A	260.74
PTFE Seats	25	12 1381 P3A	271.02
	32	12 1383 P3A	279.54
	40	12 1385 P3A	298.06
	50	12 1387 P3A	319.84
	63	12 1389 P3A	371.77
	75	12 1391 P3A	587.87
	90	12 1393 P3A	877.15
	110	12 2094 P3A	892.02

MM Fusion Sockets

Double Acting	16	12 1377 P3A	266.14
FPM Seals	20	12 1412 P3A	268.04
PTFE Seats	25	12 1380 P3A	280.35
	32	12 1382 P3A	290.49
	40	12 1384 P3A	310.76
	50	12 1386 P3A	334.31
	63	12 1388 P3A	388.13
	75	12 1390 P3A	621.01
	90	12 1392 P3A	845.37
	110	12 2115 P3A	954.91

MM Fusion Spigots

Double Acting	16	12 1430 P3A	258.98
EPDM Seals	20	12 1432 P3A	260.74
PTFE Seats	25	12 1434 P3A	271.02
	32	12 1436 P3A	279.54
	40	12 1438 P3A	298.06
	50	12 1440 P3A	319.84
	63	12 1442 P3A	371.77
	75	12 1444 P3A	587.87
	90	12 1446 P3A	877.15
	110	12 2508 P3A	891.89

MM Fusion Spigots

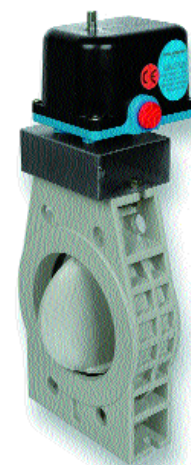
Double Acting	16	12 1431 P3A	266.14
FPM Seals	20	12 1433 P3A	268.04
PTFE Seats	25	12 1435 P3A	280.35
	32	12 1437 P3A	290.49
	40	12 1439 P3A	310.92
	50	12 1441 P3A	334.31
	63	12 1443 P3A	388.13
	75	12 1445 P3A	621.01
	90	12 1447 P3A	845.37
	110	12 2509 P3A	954.91

Requires pilot valve - enquire for details.

Also available with BSP female threaded connections, and with fail-safe open actuators. Please enquire for details.

Praher Type S4 Electrically Actuated Butterfly Valve

Description: Wafer style butterfly valve with electric actuation
Mounting: In any position, between flanges to BS4504 EN1072 PN10
Maximum Fluid Pressure at 20°C: Sizes 3"/90mm to 5"/140mm - 10 bar;
 Sizes 6"/160mm to 8"/225mm - 6 bar
Fluid Temperature Range: 0°C-80°C
Construction:
Body: Polypropylene
Seals: EPDM or FPM
Shaft: Stainless Steel 304
End Connections: Flange mounted (flanges not included)
Actuation:
Housing Material: Plastic with epoxy coated aluminium base
Voltages: 240v AC; 110v AC; 24v AC; 110v DC; 24v DC; 24v DC; 12v DC
Frequency Range: 50/60 Hz **Protection:** IP65 **Manual Override:** Optional
Position Indicator: Included **Contacts:** Open, closed. Additional contacts optional.



110v ac EPDM Seals	3"/90	12 1927 E2AG	1063.08
	4"/110	12 1928 E2AG	1164.90
	5"/140	12 2544 E2AG	1257.33
	6"/160	12 1929 E2AG	1820.04
	8"/225	12 1930 E2AG	1977.44

110v ac FPM Seals	3"/90	12 1931 E2AG	1113.98
	4"/110	12 1932 E2AG	1219.16
	5"/140	12 2310 E2AG	1332.38
	6"/160	12 1933 E2AG	1887.02
	8"/225	12 1934 E2AG	2063.18

Praher Type S4 Pneumatically Actuated Butterfly Valve

Description: Wafer style butterfly valve with pneumatic operation
Mounting: In any position, between flanges to BS4504 EN1072 PN10
Maximum Fluid Pressure at 20°C: Sizes 3"/90mm to 5"/140mm - 10 bar;
 Sizes 6"/160mm to 8"/225mm - 6 bar
Fluid Temperature Range: 0°C-80°C
Construction:
Body: Polypropylene
Seals: EPDM or FPM
Shaft: Stainless Steel 304
End Connections: Flange mounted (flanges not included)
Actuation:
Housing Material: Aluminium
Air Actuators: Fail-safe close, fail-safe open, double acting
Protection: IP65 **Manual Override:** Optional **Position Indicator:** Included
Contacts: Optional limit switch box with two mechanical switches
Pilot Valve: Solenoid, not included



Fail-safe Close EPDM Seals	3"/90	12 1927 P1D	728.94
	4"/110	12 1928 P1D	858.75
	5"/140	12 2544 P1D	968.30
	6"/160	12 1929 P1D	1254.32
	8"/225	12 1930 P1D	1429.45

Fail-safe Close FPM Seals	3"/90	12 1931 P1D	780.32
	4"/110	12 1932 P1D	914.19
	5"/140	12 2310 P1D	1045.39
	6"/160	12 1933 P1D	1321.27
	8"/225	12 1934 P1D	1515.99

Double Acting EPDM Seals	3"/90	12 1927 P3D	632.91
	4"/110	12 1928 P3D	699.17
	5"/140	12 2544 P3D	792.49
	6"/160	12 1929 P3D	935.16
	8"/225	12 1930 P3D	1188.74

Double Acting FPM Seals	3"/90	12 1931 P3D	684.31
	4"/110	12 1932 P3D	754.62
	5"/140	12 2310 P3D	869.58
	6"/160	12 1933 P3D	1031.86
	8"/225	12 1934 P3D	1275.29

Fail-safe Open EPDM Seals	3"/90	12 1927 P2D	728.94
	4"/110	12 1928 P2D	858.75
	5"/140	12 2544 P2D	968.30
	6"/160	12 1929 P2D	1254.32
	8"/225	12 1930 P2D	1429.45

Fail-safe Open FPM Seals	3"/90	12 1931 P2D	780.32
	4"/110	12 1932 P2D	914.19
	5"/140	12 2310 P2D	1045.39
	6"/160	12 1933 P2D	1321.27
	8"/225	12 1934 P2D	1515.99

Requires pilot valve - enquire for details.

Praher Type T4 Pneumatically Actuated Diaphragm Valve

Description: In-line pneumatically operated diaphragm valve

Mounting: In any position

Maximum Fluid Pressure at 20°C: 10 bar

Fluid Temperature Range: 0°C-80°C

Construction:

Body: Polypropylene

Seals: EPDM, FPM or PTFE (EPDM backed)

End Connections: Fusion Spigots, Flanged BS4504 EN1072 PN10, Fusion Socket Unions

Actuation:

Housing Material: Glass reinforced polypropylene

Air Actuators: Fail-safe close, fail-safe open

Protection: IP65

Manual Override: Included

Position Indicator: Included

Contacts: Optional

Pilot Valve: Solenoid, not included



MM Fusion Spigots

Fail-safe Close EPDM Diaphragm	20	12 5679	171.75
	25	12 5681	175.81
	32	12 5683	249.52
	40	12 5685	309.04
	50	12 5687	309.04
	63	12 5689	384.76

Flanged PN10

Fail-safe Close EPDM Diaphragm	20	12 5722	200.84
	25	12 5724	204.88
	32	12 5726	261.00
	40	12 5728	339.44
	50	12 5730	350.27
	63	12 5732	431.41

MM Fusion Spigots

Fail-safe Open EPDM Diaphragm	20	12 5679 FSO	171.75
	25	12 5681 FSO	175.81
	32	12 5683 FSO	249.52
	40	12 5685 FSO	309.04
	50	12 5687 FSO	327.96
	63	12 5689 FSO	405.76

Flanged PN10

Fail-safe Open EPDM Diaphragm	20	12 5722 FSO	200.84
	25	12 5724 FSO	204.88
	32	12 5726 FSO	261.00
	40	12 5728 FSO	339.44
	50	12 5730 FSO	350.27
	63	12 5732 FSO	431.41

MM Fusion Spigots

Fail-safe Close PTFE Diaphragm	20	12 5680	180.54
	25	12 5682	184.61
	32	12 5684	261.00
	40	12 5686	339.44
	50	12 5688	350.27
	63	12 5690	431.41

Flanged PN10

Fail-safe Close PTFE Diaphragm	20	12 5723	209.62
	25	12 5725	213.68
	32	12 5727	278.60
	40	12 5729	354.32
	50	12 5731	389.49
	63	12 5733	474.00

MM Fusion Spigots

Fail-safe Open PTFE Diaphragm	20	12 5680 FSO	180.54
	25	12 5682 FSO	184.61
	32	12 5684 FSO	261.00
	40	12 5686 FSO	339.44
	50	12 5688 FSO	350.27
	63	12 5690 FSO	431.41

Flanged PN10

Fail-safe Open PTFE Diaphragm	20	12 5723 FSO	209.62
	25	12 5725 FSO	213.68
	32	12 5727 FSO	278.60
	40	12 5729 FSO	354.32
	50	12 5731 FSO	389.49
	63	12 5733 FSO	474.00

Requires pilot valve - enquire for details.

Durapipe Polypropylene

Durapipe PP industrial pipes, fittings, manual and actuated valves are available on request. Please enquire for information on the range and for latest prices.