



Tee 90°



Size	Code	Price
16	38 122 305	2.98
20	38 122 306	3.28
25	38 122 307	3.56
32	38 122 308	4.70
40	38 122 309	7.11
50	38 122 310	10.84
63	38 122 311	17.89
75	38 122 312	41.34
90	38 122 313	69.79
110	38 122 314	112.49
160	38 122 317	207.38

Reducing Tee 90°



Size	Code	Price
25x20	38 124 415	6.24
32x20	38 124 418	10.13
32x25	38 124 419	10.13
40x20	38 124 421	16.53
40x25	38 124 422	16.53
50x25	38 124 425	21.68
50x32	38 124 426	21.68
63x25	38 124 429	33.62
63x32	38 124 430	33.62
75x25	38 124 434	60.81
90x25	38 124 439	90.02
110x25	38 124 445	121.81

Elbow 90°



Size	Code	Price
16	38 115 305	2.28
20	38 115 306	2.58
25	38 115 307	2.86
32	38 115 308	3.56
40	38 115 309	6.43
50	38 115 310	8.42
63	38 115 311	13.50
75	38 115 312	31.31
90	38 115 313	51.63
110	38 115 314	84.02
160	38 115 317	175.96

Elbow 45°



Size	Code	Price
20	38 119 306	4.00
25	38 119 307	4.28
32	38 119 308	5.55
40	38 119 309	7.98
50	38 119 310	9.65
63	38 119 311	14.79
75	38 119 312	34.17
90	38 119 313	50.98
110	38 119 314	82.68
160	38 119 317	213.08

Socket



Size	Code	Price
16	38 100 305	2.12
20	38 100 306	2.12
25	38 100 307	2.28
32	38 100 308	2.86
40	38 100 309	4.28
50	38 100 310	5.13
63	38 100 311	8.54
75	38 100 312	19.91
90	38 100 313	34.17
110	38 100 314	52.73
160	38 119 317	125.99

Reducing Bush



Size	Code	Price
20x16	38 109 412	1.71
25x20	38 109 415	2.12
32x20	38 109 418	3.14
32x25	38 109 419	3.14
40x20	38 109 421	3.40
40x25	38 109 422	3.40
40x32	38 109 423	3.40
50x32	38 109 426	4.28
50x40	38 109 427	4.28
63x32	38 109 430	5.71
63x40	38 109 431	5.71
63x50	38 109 432	5.71
75x50	38 109 437	9.11
75x63	38 109 438	9.11
90x50	38 109 442	17.10
90x63	38 109 443	17.10
90x75	38 109 444	17.10
110x63	38 109 449	23.96
110x75	38 109 450	23.96
110x90	38 109 451	23.96
160x110	38 109 474	58.60

Union



EPDM

Size	Code	Price
16	38 205 305	10.00
20	38 205 306	11.10
25	38 205 307	12.58
32	38 205 308	17.55
40	38 205 309	20.76
50	38 205 310	29.20
63	38 205 311	46.21

FPM available on request

Cap



Size	Code	Price
20	38 140 306	2.12
25	38 140 307	2.86
32	38 140 308	4.28
40	38 140 309	5.99
50	38 140 310	8.53
63	38 140 311	11.68
75	38 140 312	29.20
90	38 140 313	29.20
110	38 140 314	43.35

adaptor fittings mm sizes



Tee 90°

Plain Socket x BSP Female Thread

Size	Code	Price
16x ³ / ₈	38 121 602	4.14
16x ¹ / ₂	38 121 305	4.14
20x ¹ / ₂	38 121 306	5.15
25x ³ / ₄	38 121 307	6.33
32x1	38 121 308	9.91
40x1 ¹ / ₄	38 121 309	17.18
50x1 ¹ / ₂	38 121 310	22.62
63x2	38 121 311	35.82



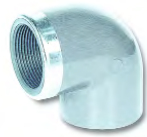
Socket Union

Plain Socket x BSP Female Thread

Size	Code	Price
16x ³ / ₈	38 202 602	17.72
20x ¹ / ₂	38 202 306	20.20
25x ³ / ₄	38 202 307	22.23
32x1	38 202 308	27.38
40x1 ¹ / ₄	38 202 309	32.70
50x1 ¹ / ₂	38 202 310	45.55
63x2	38 202 311	62.28

EPDM seals

FPM available to order



Elbow 90°

Plain Socket x BSP Female Thread

Size	Code	Price
16x ³ / ₈	38 178 602	5.51
16x ¹ / ₂	38 178 305	5.51
20x ¹ / ₂	38 178 306	9.39
25x ³ / ₄	38 178 307	10.30
32x1	38 178 308	12.22
40x1 ¹ / ₄	38 178 309	20.20
50x1 ¹ / ₂	38 178 310	28.74
63x2	38 178 311	38.76



Union

Plain Socket x Brass BSP Male

Size	Code	Price
16x ³ / ₈	38 217 305	14.52
20x ¹ / ₂	38 217 306	18.29
25x ³ / ₄	38 217 307	22.79
32x1	38 217 308	26.53
40x1 ¹ / ₄	38 217 309	36.95
50x1 ¹ / ₂	38 217 310	45.01
63x2	38 217 311	56.94



Socket

Plain Socket x BSP Female Thread

Size	Code	Price
16x ³ / ₈	38 103 602	6.15
20x ¹ / ₂	38 103 306	8.27
25x ³ / ₄	38 103 307	9.58
32x1	38 103 308	12.59
40x1 ¹ / ₄	38 103 309	15.42
50x1 ¹ / ₂	38 103 310	20.76
63x2	38 103 311	25.18



Union

Plain Socket x Brass BSP Female

Size	Code	Price
16x ³ / ₈	38 216 305	15.07
20x ¹ / ₂	38 216 306	19.17
25x ³ / ₄	38 216 307	23.96
32x1	38 216 308	29.02
40x1 ¹ / ₄	38 216 309	40.77
50x1 ¹ / ₂	38 216 310	50.51
63x2	38 216 311	56.94



Nipple

Plain Socket/Spigot x BSP Male

Size	Code	Price
16x20x ³ / ₈	38 171 332	3.72
20x25x ¹ / ₂	38 171 334	3.72
25x32x ³ / ₄	38 171 336	4.28
32x40x1	38 171 338	4.86
40x50x1 ¹ / ₄	38 171 340	6.27
50x63x1 ¹ / ₂	38 171 342	9.11
63x75x2	38 171 345	12.58

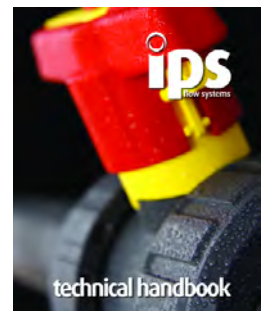
Technical Resources

Try our online technical catalogue

www.ipsflowsystems.com

Or call our technical team on:

0800 975 79 71





Stub Flange

Serrated Face



Size	Code	Price
20	38 135 306	2.28
25	38 135 307	2.58
32	38 135 308	3.40
40	38 135 309	4.86
50	38 135 310	7.71
63	38 135 311	15.07
75	38 135 312	24.52
90	38 135 313	28.21
110	38 135 314	39.60
160	38 135 317	55.31



Backing Ring

Drilled to ANSI 150

Size	Code	Price
20	860-005-12A	6.10
25	860-007-12A	6.46
32	860-010-12A	7.53
40	860-012-12A	8.00
50	860-015-12A	8.94
63	860-020-11A	12.63
75	860-025-11A	17.29
90	860-030-11A	20.00
110	860-040-11A	25.11
160	860-060-13A	39.86

solvent cement

One Step Solvent



Size	Code	Price
1/2 litre	38 462 395	21.68
1 litre	38 462 396	38.57



Eco-cleaner

Size	Code	Price
1/2 litre	03 457 395	10.02



Backing Ring

Drilled to BS10 Table D

Size	Code	Price
20	860-005-12E	5.39
25	860-007-12E	6.10
32	860-010-12E	6.41
40	860-012-12E	6.60
50	860-015-12E	8.10
63	860-020-11E	11.49
75	860-025-11E	17.17
90	860-030-11E	17.45
110	860-040-11D	22.56
110	860-040-11E	22.56
160	860-060-13E	38.16

Backing Ring

Drilled to BS4504 PN10/PN16

Size	Code	Price
20	860-005-12NP	6.10
25	860-007-12NP	6.46
32	860-010-12NP	7.53
40	860-012-12NP	8.00
50	860-015-12NP	8.94
63	860-020-11NP	12.63
75	860-025-11NP	17.29
90	860-030-11NP	20.00
110	860-040-11NP	25.11
160	860-060-13NP	39.86

How much Solvent Cement?

Estimate the number of joints per size, then use this table to calculate how much solvent cement to order.

Allow approximately one half the cement quantity in C-65 cleaner.

Detailed jointing instructions are available on request.

Pipe Size	Joints per litre
16-32	300
40-63	120
75-90	50
110-160	15

What size Brush?

It is important to use the correct size brush to apply solvent cement.

Pipe Size	Brush Size
10-32	8mm round
40-63	25 x 3mm flat
75-140	50 x 10mm flat
160	75 x 10mm flat



Brushes

Size	Code	Price
4mm round	L151/4R	1.08
8mm round	L151/8R	1.51
25 x 10mm flat	565/1	1.67
50 x 10mm flat	565/2	3.82
75 x 10mm flat	565/3	10.04



Stub Gasket

EPDM

Size	Code	Price
20	861-_-005	0.47
25	861-_-007	0.55
32	861-_-010	0.60
40	861-_-012	0.75
50	861-_-015	0.91
63	861-_-020	1.56
75	861-_-025	1.91
90	861-_-030	2.05
110	861-_-040	2.98
160	861-_-061	4.40

Complete code when ordering
Insert 'I' for NP10/16, 'A' for ANSI 150;
'E' for Table D/E

Stub Gasket

FPM

Size	Code	Price
20	862-_-005	2.21
25	862-_-007	3.28
32	862-_-010	4.33
40	862-_-012	6.94
50	862-_-015	7.59
63	862-_-020	10.00
75	862-_-025	14.47
90	862-_-030	18.88
110	862-_-040	32.21
160	862-_-061	53.75

Complete code when ordering
Insert 'I' for NP10/16, 'A' for ANSI 150;
'E' for Table D/E

