

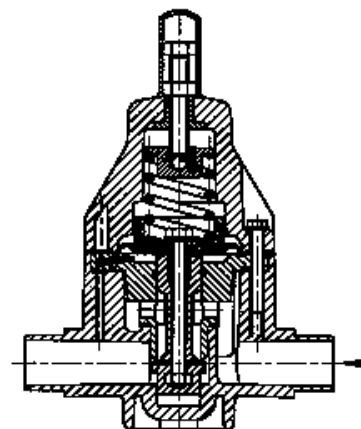
pressure reducing valves

The function of a pressure reducing valve

A pressure reducing valve is installed in-line. It is responsible for maintaining the downstream line pressure to the pressure set at the valve.

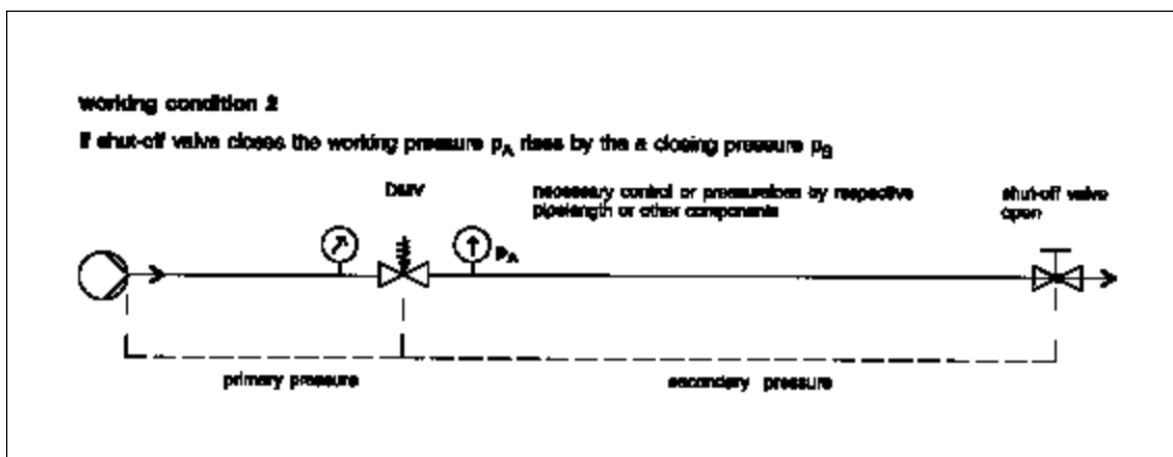
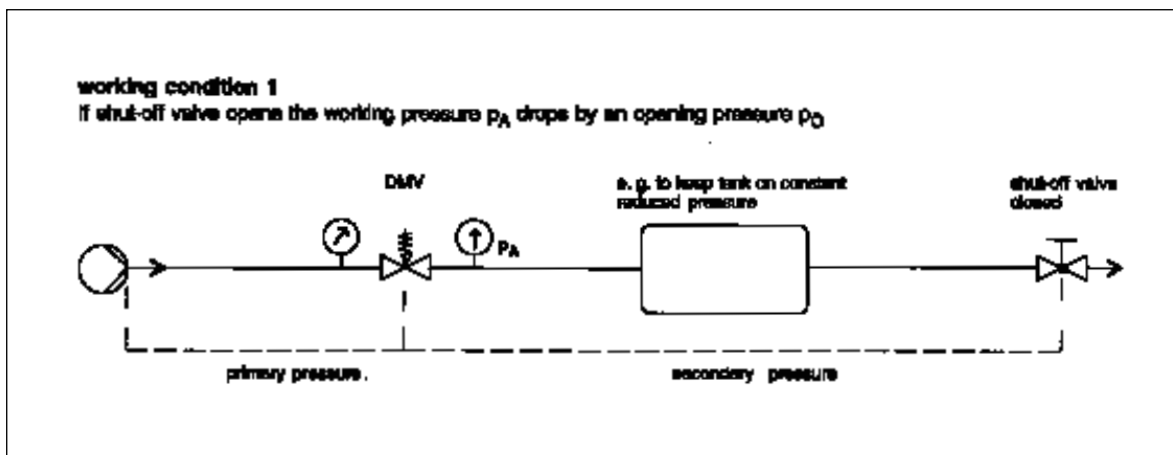
The valve works by responding to changes in the downstream pressure. For example, assume that there are normally two open valves downstream from the pressure regulator. When one is closed, the back pressure will increase. As this happens, the pressure reducing valve would close down to maintain the downstream pressure. When the valve is re-opened the pressure reducing valve would also open up again until the set pressure was reached.

Under operating conditions the pressure reducing valve is always open which means that it is balanced between the inlet pressure (primary side) and the lower outlet/working pressure. At any rise of working pressure at the valve outlet a pressure compensation via the control bore takes place at the area below the diaphragm. The higher working pressure activates the large diaphragm and lifts the piston against the spring force. The flow reduces and the working pressure drops until the balanced condition is reached again. When the working pressure drops this procedure is reversed. The spring force opens the valve seat against the lower pressure force below the diaphragm. The flow rises until the balanced condition is reached again.



Pre-setting or re-adjustment of the valve set pressure is made by removing the protective cap and by setting the control screw. The counter nut is tightened after final adjustment. When used with neutral fluids, many of the pressure reducing or relief valves can be fitted with a pressure gauge if required.

Applications for Pressure Reducing Valves



ASV Stubbe Type 755 Pressure Reducing Valve

Description: In-line adjustable valve used to reduce system pressures and to keep the working pressure constant

Mounting: In any position

Maximum Fluid Pressure at 20°C: 10 bar

Pressure Setting Range: 1 to 9 bar

Hysteresis: Approx. 0.1 to 0.4 bar

Fluid Temperature Range: 0°C-50°C

Construction:

Body: PVC-U

Diaphragm: EPDM with PTFE liner on fluid side

Seats and Seals: EPDM or FPM

End Connections: Union solvent sockets or solvent cement spigots

Features: Adjustable at any time, even during use. Constant pressure control to ± 0.2 bar. Vibration free during operation. Installation is independent of flow direction.

Options: A pressure gauge can be fitted on the primary or also on the secondary side.



Setting Range - 1 to 9 bar

Inch Solvent Cement Unions

EPDM Seals	Inch	Part No.	Price
	1/2	1193 01 /1	263.00
	3/4	1193 02 /1	343.48
	1	1193 03 /1	347.36
	1 1/4	1193 04 /1	425.03
	1 1/2	1193 05 /1	432.82
	2	1193 06 /1	440.64

Inch Solvent Cement Unions

FPM Seals	Inch	Part No.	Price
	1/2	1193 08 /1	263.00
	3/4	1193 09 /1	343.48
	1	1193 10 /1	347.36
	1 1/4	1193 11 /1	443.21
	1 1/2	1193 12 /1	453.59
	2	1193 13 /1	464.53

MM Solvent Cement Unions

EPDM Seals	MM	Part No.	Price
	16	1193 00	262.45
	20	1193 01	275.77
	25	1193 02	360.14
	32	1193 03	364.21
	40	1193 04	445.67
	50	1193 05	453.83
	63	1193 06	462.04

MM Solvent Cement Unions

FPM Seals	MM	Part No.	Price
	16	1193 07	282.66
	20	1193 08	284.77
	25	1193 09	371.01
	32	1193 10	375.68
	40	1193 11	464.72
	50	1193 12	475.61
	63	1193 13	487.08

MM Solvent Cement Spigots

EPDM Seals	MM	Part No.	Price
	16	1220 48	252.74
	20	1220 49	252.74
	25	1220 50	332.40
	32	1220 51	332.40
	40	1220 52	407.62
	50	1220 53	407.62
	63	1220 54	407.62

MM Solvent Cement Spigots

FPM Seals	MM	Part No.	Price
	16	1220 55	270.50
	20	1220 56	270.50
	25	1220 57	354.64
	32	1220 58	354.64
	40	1220 59	436.88
	50	1220 60	436.88
	63	1220 61	436.88

ASV Stubbe Type 765 Pressure Reducing Valve

Description: In-line adjustable valve used to reduce system pressures and to keep the working pressure constant

Mounting: In any position

Maximum Fluid Pressure at 20°C: 10 bar

Pressure Setting Range: 0.5 to 9 bar

Hysteresis: Approx. 0.1 to 0.4 bar

Fluid Temperature Range: 0°C-50°C

Construction:

Body: PVC-U

Diaphragm: EPDM with PTFE liner on fluid side

Seats and Seals: EPDM or FPM

End Connections: Union solvent sockets or solvent cement spigots

Features: Adjustable at any time, even during use. Constant pressure control to ± 0.2 bar. Vibration free during operation. Installation is independent of flow direction.

Options: A pressure gauge can be fitted on the primary or also on the secondary side.



Setting Range - 0.5 to 9 bar

Inch Solvent Cement Unions

EPDM Seals

1/2	1193 43 /1	282.52
3/4	1193 44 /1	367.45
1	1193 45 /1	370.00
1 1/4	1193 46 /1	445.12
1 1/2	1193 47 /1	452.38
2	1193 48 /1	458.05

Inch Solvent Cement Unions

FPM Seals

1/2	1193 50 /1	291.02
3/4	1193 51 /1	377.70
1	1193 52 /1	381.07
1 1/4	1193 53 /1	463.30
1 1/2	1193 54 /1	473.01
2	1193 55 /1	482.15

MM Solvent Cement Unions

EPDM Seals

16	1193 42	281.87
20	1193 43	282.52
25	1193 44	385.28
32	1193 45	387.95
40	1193 46	466.71
50	1193 47	474.34
63	1193 48	480.28

MM Solvent Cement Unions

FPM Seals

16	1193 49	303.04
20	1193 50	305.14
25	1193 51	396.04
32	1193 52	399.57
40	1193 53	485.79
50	1193 54	495.98
63	1193 55	505.55

MM Solvent Cement Spigots

EPDM Seals

16	1220 90	272.82
20	1220 91	272.82
25	1220 92	355.72
32	1220 93	355.72
40	1220 94	427.05
50	1220 95	427.05
63	1220 96	427.05

MM Solvent Cement Spigots

FPM Seals

16	1220 97	290.73
20	1220 98	290.73
25	1220 99	379.09
32	1221 00	361.54
40	1221 01	435.39
50	1221 02	435.39
63	1221 03	435.39

ASV Stubbe Type 750 Pressure Reducing Valve

Description: In-line adjustable valve used to reduce system pressures and to keep the working pressure constant

Mounting: In any position

Maximum Fluid Pressure at 20°C: 10 bar

Pressure Setting Range: 1 to 6 bar

Hysteresis: Approx. 0.1 to 0.4 bar

Fluid Temperature Range: 0°C-50°C

Construction:

Body: PVC-U

Diaphragm: EPDM with PTFE liner on fluid side

Seats and Seals: EPDM or FPM

End Connections: Solvent cement spigots

Features: Adjustable at any time, even during use. Constant pressure control to ± 0.2 bar. Installation is independent of flow direction.



Setting Range - 1 to 6 bar

MM Solvent Cement Spigots

EPDM Seals	75	1111 73	1283.97
	90	1111 74	3049.63

Valve Tags

We manufacture laminated plastic or stainless steel valve tags to order.



Laminated Plastic

38mm Diameter	engraved one side	Code: LAMTAG38	Price: 3.44
38mm Diameter	engraved two sides	Code: LAMTAG 38/2	Price: 4.12
50mm Diameter	engraved one side	Code: LAMTAG 50	Price: 3.44
50mm Diameter	engraved two sides	Code: LAMTAG 50/2	Price: 4.12

Stainless Steel

Rectangular tag	engraved one side	Code: S.S.TAG	Price: 3.62
-----------------	-------------------	---------------	-------------

Don't know how to use a product?

Give our expert team a call:

0800 975 79 71

Or from outside of the UK: +44 191 521 3111



pressure relief valves

The function of a pressure relief valve

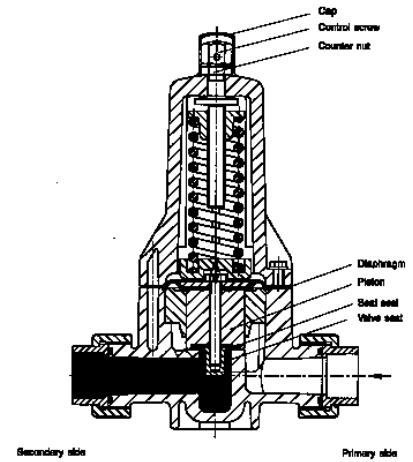
A pressure relief valve is most often used to protect a system from over-pressurisation, but it can also be used to maintain a constant upstream pressure or even as a non-return valve in certain installations.

Not normally installed as an in-line valve, it only opens when the system pressure exceeds the pressure set against the diaphragm of the valve. When this happens, the excess pressure forces the valve piston off its seat, compressing the spring and allowing fluid to flow through the valve body to discharge.

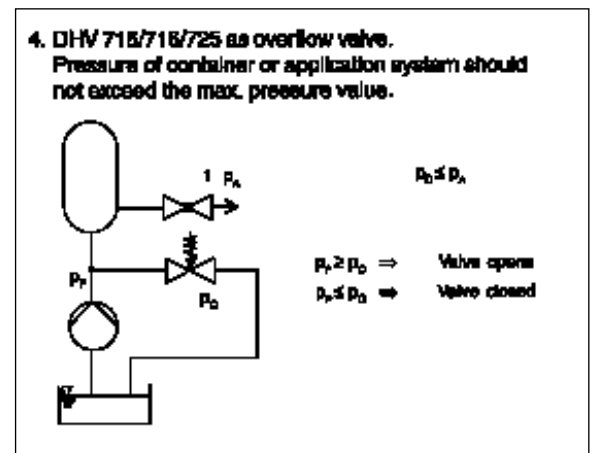
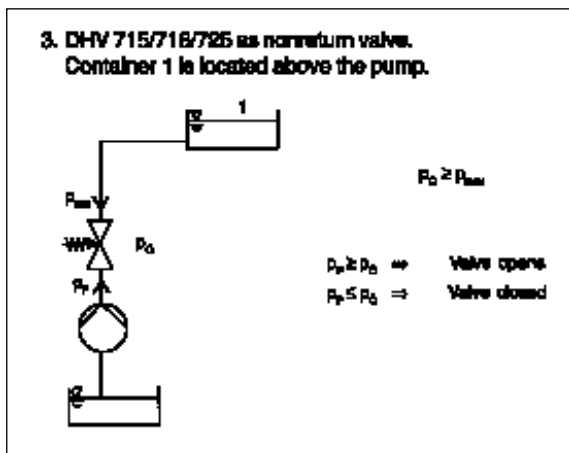
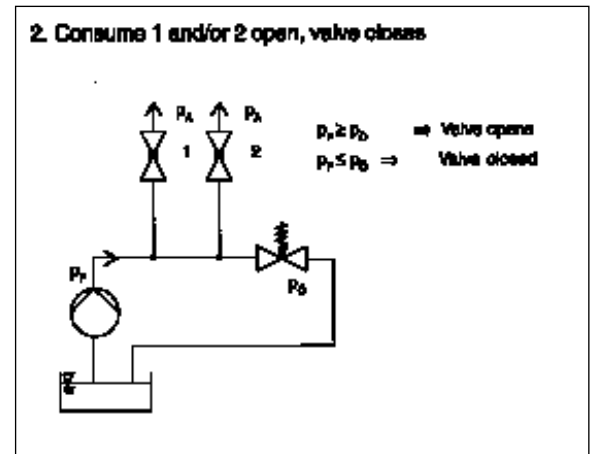
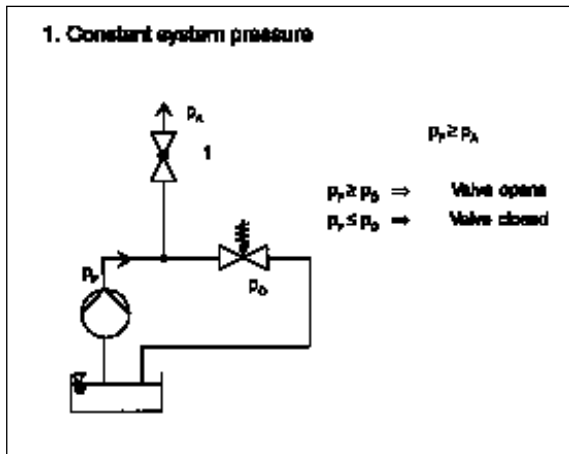
The pre-formed diaphragm allows full opening of the valve whilst separating the fluid in the lower body from the bonnet and therefore the atmosphere. The seal is additionally secured by crimped seal O-rings at the diaphragm.

When the system pressure falls back to below the set pressure, the spring forces the piston back into the seat, closing the valve.

Pre-setting or re-adjustment of the valve set pressure is made by removing the protective cap and by setting the control screw. The counter nut is tightened after final adjustment. When used with neutral fluids, many of the pressure relief valves can be fitted with a pressure gauge if required.



Applications for Pressure Relief Valves



ASV Stubbe Type 725 Pressure Relief Valve

Description: Adjustable pressure relief valve

Mounting: In any position

Maximum Fluid Pressure at 20°C: 10 bar

Pressure Setting Range: 0.2 to 10 bar

Opening Pressure: Approx. 0.2 bar

Hysteresis: Approx. 0.3 bar

Fluid Temperature Range: 0°C-50°C

Construction:

Body: PVC-U

Diaphragm: EPDM with PTFE liner on fluid side

Seats and Seals: EPDM or FPM

End Connections: Union solvent sockets or solvent cement spigots

Features: Adjustable at any time, even during use. Vibration and flutter free during operation. Maintenance free. High reproducibility, low hysteresis.

Options: A pressure gauge can be fitted on the primary or also on the secondary side.



Setting Range - 0.2 to 10 bar

Inch Solvent Cement Unions

EPDM Seals	Inch	Part No.	Price
	1/2	1190 85 /1	174.97
	3/4	1190 86 /1	233.32
	1	1190 87 /1	236.55
	1 1/4	1190 88 /1	406.95
	1 1/2	1190 89 /1	414.65
	2	1190 90 /1	421.11

Inch Solvent Cement Unions

FPM Seals	Inch	Part No.	Price
	1/2	1190 92 /1	178.86
	3/4	1190 93 /1	241.02
	1	1190 94 /1	244.26
	1 1/4	1190 95 /1	424.35
	1 1/2	1190 96 /1	434.19
	2	1190 97 /1	443.21

MM Solvent Cement Unions

EPDM Seals	MM	Part No.	Price
	16	1190 84	173.62
	20	1190 85	174.97
	25	1190 86	233.32
	32	1190 87	236.55
	40	1190 88	406.95
	50	1190 89	414.65
	63	1190 90	421.11

MM Solvent Cement Unions

FPM Seals	MM	Part No.	Price
	16	1190 91	176.85
	20	1190 92	178.86
	25	1190 93	241.02
	32	1190 94	244.26
	40	1190 95	424.35
	50	1190 96	455.26
	63	1190 97	464.72

MM Solvent Cement Spigots

EPDM Seals	MM	Part No.	Price
	20	1220 07	163.38
	25	1220 08	221.72
	32	1220 09	221.72
	40	1220 10	388.76
	50	1220 11	388.76
	63	1220 12	407.64

MM Solvent Cement Spigots

FPM Seals	MM	Part No.	Price
	16	1220 13	165.39
	20	1220 14	165.39
	25	1220 15	224.96
	32	1220 16	224.96
	40	1220 17	396.54
	50	1220 18	396.54
	63	1220 19	396.54

Don't see what you want?

We have access to a huge range of products that are not featured in our Handbook.

If you don't see what you want, give our team a call:

0800 975 79 71



ASV Stubbe Type 715-SL Pressure Relief Valve

Description: Adjustable pressure relief valve with no metal fixings for aggressive environments

Mounting: In any position

Maximum Fluid Pressure at 20°C: 10 bar

Pressure Setting Range: 0.2 to 4 bar

Hysteresis: Approx. 0.3 bar

Fluid Temperature Range: 0°C-50°C

Construction:

Body: PVC-U

Diaphragm: EPDM with PTFE liner on fluid side

Seats and Seals: EPDM or FPM

End Connections: Union solvent sockets or solvent cement spigots

Features: Body is internally screwed together making this valve suitable for externally corrosive environments. Adjustable at any time, even during use. Vibration and flutter free during operation. Maintenance free. High reproducibility, low hysteresis.

Options: A pressure gauge can be fitted on the primary or also on the secondary side.



Setting Range - 0.2 to 4 bar

Inch Solvent Cement Unions

EPDM Seals			
	1/2	1381 15 /1	145.39
	3/4	1381 16 /1	202.99
	1	1381 17 /1	210.96

Inch Solvent Cement Unions

FPM Seals			
	1/2	1382 67 /1	151.46
	3/4	1382 68 /1	212.25
	1	1382 69 /1	220.71

MM Solvent Cement Unions

EPDM Seals			
	16	1381 14	142.07
	20	1381 15	145.39
	25	1381 16	202.99
	32	1381 17	207.62

MM Solvent Cement Unions

FPM Seals			
	16	1382 66	148.44
	20	1382 67	151.47
	25	1382 68	212.25
	32	1382 69	220.71

MM Solvent Cement Spigots

EPDM Seals			
	16	1381 07	133.61
	20	1381 08	133.61
	25	1381 09	190.96
	32	1381 10	190.96

MM Solvent Cement Spigots

FPM Seals			
	16	1382 70	135.98
	20	1382 71	135.98
	25	1382 72	194.83
	32	1382 73	194.83

ASV Stubbe Type 715 Pressure Relief Valve

Description: Adjustable pressure relief valve

Mounting: In any position

Maximum Fluid Pressure at 20°C: 10 bar

Pressure Setting Range: 0.2 bar to 4 bar

Opening Pressure: Approx. 0.2 bar

Hysteresis: Approx. 0.3 bar

Fluid Temperature Range: 0°C-50°C

Construction:

Body: PVC-U

Diaphragm: EPDM with PTFE liner on fluid side

Seats and Seals: EPDM or FPM

End Connections: Union solvent sockets or solvent cement spigots

Features: Adjustable at any time, even during use. Vibration and flutter free during operation. Maintenance free. High reproducibility, low hysteresis.

Options: A pressure gauge can be fitted on the primary or also on the secondary side.



Setting Range - 0.2 to 4 bar

Inch Solvent Cement Unions

EPDM Seals			
	1/2	1190 01 /1	142.95
	3/4	1190 02 /1	199.57
	1	1190 03 /1	204.12
	1 1/4	1190 04 /1	267.66
	1 1/2	1190 05 /1	276.63
	2	1190 06 /1	285.75

Inch Solvent Cement Unions

FPM Seals			
	1/2	1190 08 /1	148.93
	3/4	1190 09 /1	208.68
	1	1190 10 /1	217.00
	1 1/4	1190 11 /1	287.96
	1 1/2	1190 12 /1	299.28
	2	1190 13 /1	311.40

MM Solvent Cement Unions

EPDM Seals			
	16	1190 00	142.16
	20	1190 01	142.95
	25	1190 02	199.57
	32	1190 03	204.12
	40	1190 04	267.66
	50	1190 05	276.63
	63	1190 06	285.75

MM Solvent Cement Unions

FPM Seals			
	16	1190 07	145.95
	20	1190 08	148.93
	25	1190 09	208.68
	32	1190 10	217.00
	40	1190 11	287.96
	50	1190 12	299.28
	63	1190 13	311.40

ASV Stubbe Type 716-SL Pressure Relief Valve

Description: Adjustable pressure relief valve with no metal fixings for aggressive environments

Mounting: In any position

Maximum Fluid Pressure at 20°C: 10 bar

Pressure Setting Range: 0.5 to 10 bar

Hysteresis: Approx. 0.3 bar

Fluid Temperature Range: 0°C-50°C

Construction:

Body: PVC-U

Diaphragm: EPDM with PTFE liner on fluid side

Seats and Seals: EPDM or FPM

End Connections: Union solvent sockets or solvent cement spigots

Features: Body is internally screwed together making this valve suitable for externally corrosive environments. Adjustable at any time, even during use. Vibration and flutter free during operation. Maintenance free. High reproducibility, low hysteresis.

Options: A pressure gauge can be fitted on the primary or also on the secondary side.



Setting Range - 0.5 to 10 bar

Inch Solvent Cement Unions

EPDM Seals			
	1/2	1381 63 /1	145.40
	3/4	1381 64 /1	202.99
	1	1381 65 /1	207.62

MM Solvent Cement Unions

EPDM Seals			
	16	1381 62	144.59
	20	1381 63	145.39
	25	1381 64	202.99
	32	1381 65	207.62

MM Solvent Cement Spigots

EPDM Seals			
	16	1381 58	133.61
	20	1381 59	133.61
	25	1381 60	190.96
	32	1381 61	190.96

Inch Solvent Cement Unions

FPM Seals			
	1/2	1382 74 /1	151.47
	3/4	1382 75 /1	212.25
	1	1382 76 /1	220.71

MM Solvent Cement Unions

FPM Seals			
	16	1382 74	148.44
	20	1382 75	151.47
	25	1382 76	212.25
	32	1382 77	220.71

MM Solvent Cement Spigots

FPM Seals			
	16	1382 78	135.98
	20	1382 79	135.98
	25	1382 80	194.83
	32	1382 81	194.83

ASV Stubbe Type 716 Pressure Relief Valve

Description: Adjustable pressure relief valve

Mounting: In any position

Maximum Fluid Pressure at 20°C: 10 bar

Pressure Setting Range: 0.5 to 10 bar

Opening Pressure: Approx. 0.4 bar

Hysteresis: Approx. 0.3 bar

Fluid Temperature Range: 0°C-50°C

Construction:

Body: PVC-U **Diaphragm:** EPDM with PTFE liner on fluid side

Seats and Seals: EPDM or FPM

End Connections: Union solvent sockets or solvent cement spigots

Features: Adjustable at any time, even during use. Vibration and flutter free during operation. Maintenance free. High reproducibility, low hysteresis.

Options: A pressure gauge can be fitted on the primary or also on the secondary side.



Setting Range - 0.5 to 10 bar

Inch Solvent Cement Unions

EPDM Seals			
	1/2	1190 43 /1	142.95
	3/4	1190 44 /1	199.57
	1	1190 45 /1	204.12
	1 1/4	1190 46 /1	267.66
	1 1/2	1190 47 /1	276.63
	2	1190 48 /1	285.75

MM Solvent Cement Unions

EPDM Seals			
	16	1190 42	142.16
	20	1190 43	142.95
	25	1190 44	199.57
	32	1190 45	204.12
	40	1190 46	267.66
	50	1190 47	276.63
	63	1190 48	285.75

Inch Solvent Cement Unions

FPM Seals			
	1/2	1190 50/1	148.93
	3/4	1190 51/1	208.68
	1	1190 52/1	217.00
	1 1/4	1190 53/1	287.96
	1 1/2	1190 54/1	299.28
	2	1190 55/1	311.41

MM Solvent Cement Unions

FPM Seals			
	16	1190 49	145.95
	20	1190 50	148.93
	25	1190 51	208.68
	32	1190 52	217.00
	40	1190 53	287.96
	50	1190 54	299.28
	63	1190 55	311.40

ASV Stubbe Type 712-R Pressure Relief and Non-Return Valve

Description: Adjustable pressure relief and overflow valve, back-pressure safe

Mounting: In any position

Maximum Fluid Pressure at 20°C: 10 bar

Pressure Setting Range: 0.3 to 10 bar

Opening Pressure: Approx. 0.5 bar

Hysteresis: Approx. 0.3 bar

Fluid Temperature Range: 0°C-50°C

Construction:

Body: PVC-U

Diaphragm: EPDM with PTFE liner on fluid side

Seats and Seals: EPDM or FPM

End Connections: Union solvent sockets or solvent cement spigots

Features: Unique design: valve acts as a non-return valve if there is no pressure on the inlet side. Adjustable at any time, even during use. Vibration free during operation. Maintenance free. High reproducibility, low hysteresis.

Options: A pressure gauge can be fitted on the primary or also on the secondary side.



Setting Range - 0.3 to 10 bar

Inch Solvent Cement Unions

EPDM Seals			
	1/2	1206 61 /1	158.17
	3/4	1206 62 /1	220.78
	1	1206 63 /1	226.12
	1 1/4	1206 64 /1	281.97
	1 1/2	1206 65 /1	291.73
	2	1206 66 /1	301.78

Inch Solvent Cement Unions

FPM Seals			
	1/2	1206 68 /1	164.02
	3/4	1206 69 /1	239.00
	1	1206 70 /1	241.04
	1 1/4	1206 71 /1	302.40
	1 1/2	1206 72 /1	314.51
	2	1206 73 /1	327.26

MM Solvent Cement Unions

EPDM Seals			
	16	1206 60	164.08
	20	1206 61	165.85
	25	1206 62	231.50
	32	1206 63	237.09
	40	1206 64	295.66
	50	1206 65	305.90
	63	1206 66	316.43

MM Solvent Cement Unions

FPM Seals			
	16	1206 67	168.03
	20	1206 68	171.99
	25	1206 69	239.00
	32	1206 70	241.04
	40	1206 71	302.40
	50	1206 72	314.51
	63	1206 73	327.26

MM Solvent Cement Spigots

EPDM Seals			
	16	1218 80	143.73
	20	1218 81	143.72
	25	1218 82	205.68
	32	1218 83	205.68
	40	1218 84	260.11
	50	1218 85	260.11
	63	1218 86	260.11

MM Solvent Cement Spigots

FPM Seals			
	16	1218 87	146.84
	20	1218 88	146.84
	25	1218 89	209.45
	32	1218 90	209.45
	40	1218 91	269.09
	50	1218 92	269.09
	63	1218 93	269.09

Durapipe PR Pressure Relief Valve

Description: Adjustable in-line pressure relief valve

Mounting: In any position

Maximum Fluid Pressure at 20°C: 10 bar

Pressure Setting Range: 0.7 bar - 7 bar

Fluid Temperature Range: 0°C - 60°C

Construction:

Body: PVC-U

Bonnet: Glass reinforced polypropylene

Diaphragm: EPDM

End Connections: Solvent Spigots



Inch Solvent Cement Spigots

EPDM Diaphragm			
	1/2	H0 PRE 202	310.79
	3/4	H0 PRE 203	335.36
	1	H0 PRE 204	360.87
	1 1/4	H0 PRE 205	425.11
	1 1/2	H0 PRE 206	492.19
	2	H0 PRE 207	566.79

MM Solvent Cement Spigots

EPDM Diaphragm			
	20	H0 PRE 406	310.77
	25	H0 PRE 407	335.51
	32	H0 PRE 408	360.22
	40	H0 PRE 409	427.33
	50	H0 PRE 410	490.86
	63	H0 PRE 411	565.03

ASV Stubbe Type 712 Pressure Relief Valve

Description: Adjustable pressure relief valve
Mounting: In any position
Maximum Fluid Pressure at 20°C: Sizes 75mm & 90mm: 10 bar; 110mm: 6 bar
Pressure Setting Range: Choice of 0.3 to 4 bar, 0.5 to 6 bar or 0.5 to 10 bar
Opening Pressure: Approx. 0.3 to 0.5 bar
Hysteresis: Maximum approx. 1 bar
Fluid Temperature Range: 0°C-50°C
Construction:
Body: PVC-U
Diaphragm: EPDM with PTFE liner on fluid side
Seats and Seals: EPDM or FPM
End Connections: Solvent cement spigots
Features: Adjustable at any time, even during use. Vibration and flutter free during operation. Maintenance free.



Setting Range
0.3 to 4 bar

MM Solvent Cement Spigots

EPDM Seals	75	1105 45	981.23
	90	1105 48	1553.43
	110	1129 26	2377.07

MM Solvent Cement Spigots

FPM Seals	75	1129 20	1078.79
	90	1129 23	1709.17
	110	1129 29	2613.46

Setting Range
0.5 to 6 bar

MM Solvent Cement Spigots

EPDM Seals	110	1118 56	2377.07
------------	-----	---------	---------

MM Solvent Cement Spigots

FPM Seals	110	1129 32	2613.46
-----------	-----	---------	---------

Setting Range
0.5 to 10 bar

MM Solvent Cement Spigots

EPDM Seals	75	1100 60	981.23
	90	1100 63	1553.43

MM Solvent Cement Spigots

FPM Seals	75	1129 11	1078.79
	90	1129 14	1709.17

ASV Stubbe Type 718 Pressure Relief Valve

Description: Adjustable pressure relief valve
Mounting: In any position
Maximum Fluid Pressure at 20°C: 10 bar
Pressure Setting Range: 0.5 to 10 bar
Opening Pressure: Approx. 0.5 bar
Hysteresis: Approx. 1 bar
Fluid Temperature Range: 0°C-50°C
Construction:
Body: PVC-U **Diaphragm:** EPDM with PTFE liner on fluid side
End Connections: Solvent weld spigots
Features: Adjustable at any time, even during use. Vibration and flutter free during operation. Maintenance free. High reproducibility, low hysteresis.
Options: A pressure gauge can be fitted on the primary or also on the secondary side.

Setting Range - 0.5 to 10 bar

Ideal for
Oscillating
Pumps



Size 12mm

MM Solvent Cement Unions

EPDM Seals	12	1278 39	125.85
------------	----	---------	--------

MM Solvent Cement Unions

FPM Seals	12	1278 40	129.69
-----------	----	---------	--------

MM Fusion Spigots

FPM Seals	16	1352 69	122.44
	20	1352 70	122.44
	25	1352 71	175.19
	32	1352 72	175.19
	40	1352 73	231.64
	50	1352 74	231.64
	63	1352 75	231.64



Sizes 16-63mm