

Praher Type S4 T & L-Port Ball Valve

Description: In-line horizontal T-port or L-port ball valve with lockable handle and union ends

Mounting: In any position

Maximum Fluid Pressure at 20°C: 16 bar

Fluid Temperature Range: 0°C - 140°C

Construction:

Body: PVDF

Seals: FPM

Seats: PTFE

End Connections: Fusion sockets or fusion spigots



T-Port Ball Valve

MM Fusion Sockets

	16	124918	185.72
FPM Seals	20	124922	198.70
PTFE Seats	25	125030	245.81
	32	124926	308.64
	40	125032	373.52
	50	124930	462.95
	63	124934	647.31

MM Fusion Spigots

	16	124920	185.72
FPM Seals	20	124924	198.70
PTFE Seats	25	125034	245.81
	32	124928	308.64
	40	125036	373.52
	50	124932	462.95
	63	124936	647.31

L-Port Ball Valve

MM Fusion Sockets

	16	124919	185.72
FPM Seals	20	124923	198.70
PTFE Seats	25	125031	245.81
	32	124927	308.64
	40	125033	373.52
	50	124931	462.95
	63	124935	647.31

MM Fusion Spigots

	16	124921	185.72
FPM Seals	20	124925	198.70
PTFE Seats	25	125035	245.81
	32	124929	308.64
	40	125037	373.52
	50	124933	462.95
	63	124937	647.31

Praher Type S4 Ball Valve with Actuator Adaptor Kit

FPM Seals

16	122.433	147.68
20	122.434	148.88
25	122.435	177.23
32	122.436	211.49
40	122.437	271.75
50	122.438	415.91
63	122.439	551.78
75	122.440	768.00
90	122.441	998.40
110	122.442	1429.66

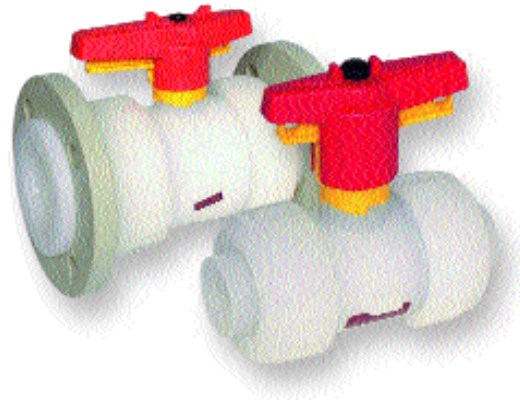
Prices on request for alternative end connections



**PRAHER
VALVES**

Praher Type S4 Ball Valve

Description: In-line double union ball valve with lockable handle
Mounting: In any position
Maximum Fluid Pressure at 20°C: Sizes 16mm to 75mm - 16bar;
 Sizes 90mm - 10 bar; 110mm - 6 bar
Fluid Temperature Range: 0°C - 140°C
Construction:
Body: PVDF
Seals: FPM
Seats: PTFE
End Connections: Fusion sockets, fusion spigots,
 BSP Female Threaded, Flanged BS4504 EN1072 PN10
Option: Silicon-free



MM Fusion Sockets

	16	20	25	32	40	50	63	75	90	110
FPM Seals	12.1449	12.1450	12.1448	12.1451	12.1452	12.1453	12.1454	12.1455	12.1456	12.2032
PTFE Seats	75.66	76.88	99.14	126.74	167.98	238.31	329.79	564.00	749.73	1110.25

MM Fusion Spigots

	16	20	25	32	40	50	63	75	90	110
FPM Seals	12.2259	12.1491	12.1492	12.1493	12.1494	12.1495	12.1496	12.1497	12.1498	12.2012
PTFE Seats	75.66	76.88	99.14	126.74	167.98	238.31	329.79	564.00	749.73	1110.25

BSP Female Threaded

	3/8	1/2	3/4	1	1 1/4	1 1/2	2	2 1/2	3
FPM Seals	12.2093	12.1482	12.1483	12.1484	12.1485	12.1486	12.1487	12.1488	12.2349
PTFE Seats	81.00	82.35	106.25	134.52	176.85	250.59	346.87	633.65	974.12

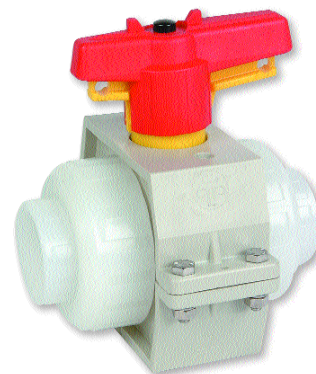
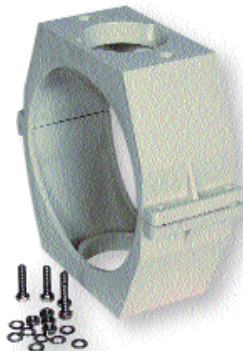
Flanged BS4504 PN10/16

	1/2	3/4	1	1 1/4	1 1/2	2	2 1/2	3
FPM Seals	12.2025	12.2026	12.2027	12.2502	12.2503	12.2504	12.2505	12.2506
PTFE Seats	148.85	213.02	262.19	333.90	462.95	618.63	1043.33	1466.68

Praher Valve Bracket for Type S4 Ball Valves

- For actuator or control panel mounting
- Can be used to provide fixed point mounting to support

	16	20	25	32	40	50	63	75	90	110
	17.0279	17.0279	17.0280	17.0281	17.0228	17.0230	17.0232	17.0275	17.0282	17.0282
	27.56	27.56	29.51	31.32	33.40	35.06	37.16	51.92	58.04	58.04



Valve shown with bracket

Praher Type T4 Diaphragm Valve

Description: In-line diaphragm valve with position indicator

Mounting: In any position

Maximum Fluid Pressure at 20°C: 10 bar

Fluid Temperature Range: 0°C - 120°C

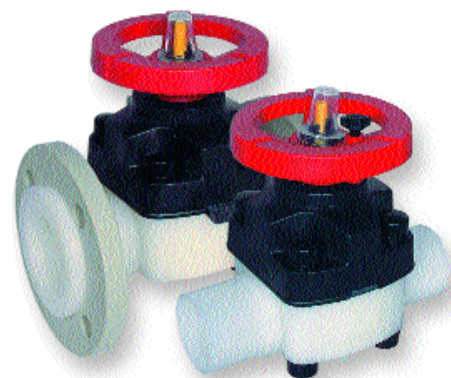
Construction:

Body: PVDF

Diaphragm: PTFE (EPDM backed), FPM or EPDM

End Connections: Union Sockets, Fusion Spigots, Flanged (on request)

Option: Silicon-free



MM Fusion Spigots

PTFE Diaphragm	Valve Size	Code	Price
	20	12.2798	165.92
	25	12.2799	177.53
	32	12.2800	206.21
	40	12.2801	306.59
	50	12.2802	336.63
	63	12.2803	439.05
	75	12.0184	947.74
	90	12.0185	1200.38
	110	12.0917	1448.93

Flanged BS4504 PN10

PTFE Diaphragm	Valve Size	Code	Price
	1/2/20	12.0261	189.16
	3/4/25	12.0265	189.82
	1/32	12.0270	227.38
	1 1/4/40	12.0271	343.47
	1 1/2/50	12.0272	373.52
	2/63	12.0273	459.53
	2 1/2/75	12.0274	828.93
	3/90	12.0275	1422.97
	4/110	12.0921	1496.72
	5/140	12.0922	3890.66

MM Union Sockets

PTFE Diaphragm	Valve Size	Code	Price
	20	12.5074	200.74
	25	12.5075	207.57
	32	12.5076	237.62
	40	12.5077	370.08
	50	12.5078	409.70
	63	12.5079	555.81

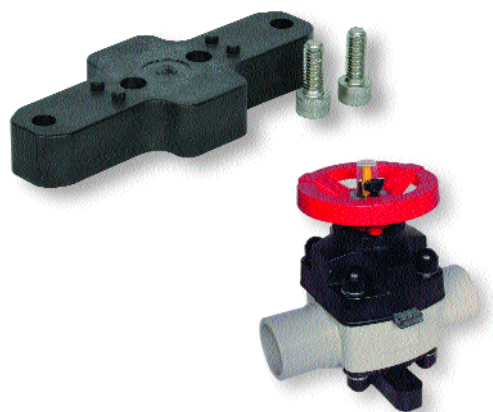
Spare PTFE Diaphragm	Valve Size	Code	Price
	20	05.0473	41.18
	25	05.0473	41.18
	32	05.0474	46.20
	40	05.0475	57.34
	50	05.0475	57.34
	63	05.0476	64.87
	75	12.0918	315.93
	90	12.0918	315.93
	110	12.0919	361.86
	140	12.0919	361.86

Also available with EPDM or FPM diaphragms.
Please enquire for details.

Diaphragm Valve Mounting Plate

- Ensures clearance of union nut from mounting surface
- Complete with two fixing screws

Valve Size	Thickness (mm)	Code	Price
20	16.0	14.0103	5.20
25	23.0	14.0102	5.20
32	23.0	14.0102	5.20
40	18.5	14.0123	8.45
50	23.5	14.0109	8.45
63	23.5	14.0109	8.45



ASV Stubbe Type K210 Butterfly Valve

Description: Wafer style butterfly valve
Mounting: In any position, between flanges to BS4504 EN1072 PN10
Maximum Fluid Pressure at 20°C: Sizes 90mm to 140mm - 10 bar;
 Sizes 160mm to 225mm - 6 bar
Fluid Temperature Range: 0°C - 120°C
Construction:
Body and Disc: PVDF
Seals: FPM
Shaft: Stainless Steel
End Connections: Flange mounted (requires chamfered stub flange)



Lever Operated			
FPM Seals	2"/63	64459	430.86
	2 1/2"/75	64460	535.31
	3"/90	64461	645.94
	4"/110	64462	762.02
	5"/140	64463	954.58
	6"/160	64464	1189.45
	8"/225	64465	1519.94

Praher Laboratory/Sampling Ball Valve

Description: In-line ball valve for laboratory or sampling use
Mounting: In any position
Maximum Fluid Pressure at 20°C: 10 bar
Fluid Temperature Range: 0°C - 120°C
Construction:
Body: PVDF
Seals: FPM
Seats: PTFE
End Connections: 1/4" R or NPT Threaded; Hose Connection included



Valve with R/NPT Adaptor and Plug

R Male x Female	1/4	12.2459	24.17
NPT Male x Female	1/4	12.2460	25.67

Hose Nozzle

BSP Male	1/4	141.145	11.07
NPT Male	1/4	140.205	11.07

ASV Stubbe Gauge Guard

Description: Pressure gauge connector with isolating diaphragm
Mounting: In any position
Maximum Fluid Pressure at 20°C: 10 bar
Fluid Temperature Range: 0°C-120°C
Construction:
Body: PVDF
Diaphragm: PTFE (EPDM backed)
End Connections: Fusion Spigots, NPT Female Threaded



Please note: gauge not included.

25x1/4x1/4"	135535	107.00
32x1/2x1/2"	135538	107.00
1/4x1/4"	135541	112.04
1/2x1/2"	135544	112.04

Praher Type S4 Check (Non-Return) Valve

Description: In-line spring weighted cone check valve

Mounting: In any position

Maximum Fluid Pressure at 20°C: Sizes 16mm to 75mm - 16 bar;
 Sizes 90mm to 110mm - 10 bar

Fluid Temperature Range: 0°C - 120°C

Construction:

Body: PVDF

Seals: FPM

Spring: Stainless steel sleeved in PTFE

End Connections: Fusion sockets, fusion spigots or BSP Female Threaded



MM Fusion Sockets

FPM Seals

16	12.1658	112.40
20	12.1659	113.77
25	12.1660	143.39
32	12.1661	168.66
40	12.1662	246.51
50	12.1663	316.82
63	12.1664	426.07
75	12.1665	617.24
90	12.1666	812.53
110	12.2350	1134.83

MM Fusion Spigots

FPM Seals

16	12.1676	112.40
20	12.1677	113.77
25	12.1678	143.39
32	12.1679	168.66
40	12.1680	246.51
50	12.1681	316.82
63	12.1682	426.07
75	12.1683	617.24
90	12.1684	812.53
110	12.2351	1134.83

BSP Female Threaded

FPM Seals

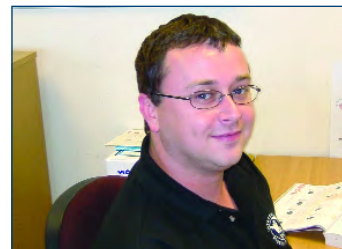
3/8	12.1667	117.59
1/2	12.1668	118.95
3/4	12.1669	150.22
1	12.1670	176.17
1 1/4	12.1671	255.37
1 1/2	12.1672	329.11
2	12.1673	442.46
2 1/2	12.1674	619.45
3	12.1675	822.81

Need advice?

Our expert team are here to help.
 Call our freephone:

0800 975 79 71

Or from outside of the UK:
 +44 191 521 3111



Praher Type S4 Wafer Check Valve

Description: Wafer style flap check valve

Mounting: In any position, between flanges to BS4504 EN1072 PN10.

Optional spring return for mounting in horizontal position or for pulsating flow.

Maximum Fluid Pressure at 20°C: 10 bar

Fluid Temperature Range: 0°C - 120°C

Construction:

Body: PVDF

Seals: FPM

Spring (optional): Stainless Steel or hastelloy

End Connections: Flange mounted (flanges not included)



No Spring Return

FPM Seals			
	1 1/4"/40	07.0194	161.15
	1 1/2"/50	07.0204	165.24
	2"/63	07.0044	178.22
	2 1/2"/75	07.0054	206.21
	3"/90	07.0064	247.86
	4"/110	07.0074	341.40
	5"/140	07.0084	460.20
	6"/160	07.0094	648.67
	8"/225	07.0104	1545.88
	10"/280	07.0114	1734.34

Stainless Steel Spring Return

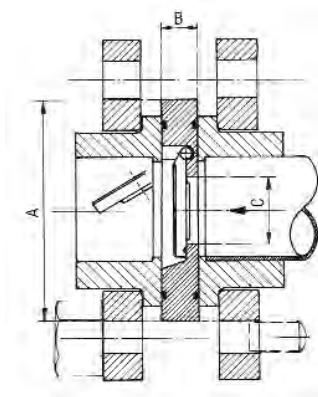
FPM Seals			
	1 1/4"/40	07.0195	224.66
	1 1/2"/50	07.0202	228.05
	2"/63	07.0045	243.78
	2 1/2"/75	07.0055	275.16
	3"/90	07.0065	323.65
	4"/110	07.0075	421.30
	5"/140	07.0085	571.53
	6"/160	07.0095	707.40
	8"/225	07.0105	1584.11
	10"/280	07.0115	1791.69

Hastelloy Spring Return

FPM Seals			
	1 1/4"/40		
	1 1/2"/50		
	2"/63		
	2 1/2"/75		
	3"/90		
	4"/110		
	5"/140		
	6"/160		
	8"/225		
	10"/280		

on application

DIMENSIONS (mm)



D	DN	A	B	C
63	50	109	18	32
75	65	129	20	40
90	80	144	20	52
110	100	164	23	70
140	125	195	23	92
160	150	220	26	112
225	200	275	35	150
280	250	330	40	190