

plain fittings inch sizes



Tee 90°



Standard Range

Size	Code	Price
3/8	-	
1/2	3101-005	2.41
3/4	3101-007	3.34
1	3101-010	4.70
1 1/4	3101-012	6.66
1 1/2	3101-015	9.82
2	3101-020	14.92
2 1/2	3101-025	25.90
3	3101-030	43.65
4	3101-040	64.06
5	3101-050	170.05
6	3101-060	224.03
8	3101-080	366.26

Industrial Range

Code	Price
01 122 101	2.38
01 122 102	2.84
01 122 103	3.96
01 122 104	5.45
01 122 105	7.85
01 122 106	11.52
01 122 107	17.61
11 122 312	30.49
01 122 109	51.39
01 122 110	75.45
11 122 316	200.34
01 122 112	263.66
01 122 113	411.08

Swept Tee 90°



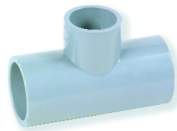
Standard Range

Size	Code	Price
1	-	
1 1/2	-	
2	-	
2 1/2	-	
4	-	

Industrial Range

Code	Price
01 148 104	10.68
01 148 106	19.05
01 148 107	28.08
11 148 312	44.74
01 148 110	124.66

Reducing Tee 90°



Standard Range

Size	Code	Price
3/4x1/2	-	
1x1/2	-	
1x3/4	-	

Industrial Range

Code	Price
01 124 122	4.04
01 124 123	5.73
01 124 124	5.73

Saddle 90°



Standard Range

Size	Code	Price
2x1 1/4	-	
3x1 1/2	-	
4x2	-	
6x2	-	

Industrial Range

Code	Price
01 126 129	24.76
01 126 134	33.03
01 126 140	37.28
01 126 146	43.33

Tee 45°



Standard Range

Size	Code	Price
1/2	-	
3/4	-	
1	-	
1 1/4	-	
1 1/2	-	
2	-	

Industrial Range

Code	Price
01 128 102	12.73
01 128 103	13.44
01 128 104	15.23
01 128 105	18.44
01 128 106	23.09
01 128 107	35.23



Elbow 90°



Standard Range

Size	Code	Price
3/8	-	
1/2	3106-005	2.17
3/4	3106-007	2.52
1	3106-010	3.52
1 1/4	3106-012	6.03
1 1/2	3106-015	7.83
2	3106-020	11.79
2 1/2	3106-025	22.68
3	3106-030	34.00
4	3106-040	50.74
5	3106-050	116.97
6	3106-060	203.35
8	3106-080	327.51

Industrial Range

Code	Price
01 115 101	2.21
01 115 102	2.50
01 115 103	2.95
01 115 104	4.17
01 115 105	7.04
01 115 106	9.16
01 115 107	13.92
11 115 312	26.64
01 115 109	39.97
01 115 110	59.71
11 115 316	137.78
01 115 112	240.31
01 115 113	366.81

Bend 90°



Standard Range

Size	Code	Price
1/2	3106-005SR	7.83
3/4	3106-007SR	9.08
1	3106-010SR	12.77
1 1/4	3106-012SR	18.26
1 1/2	3106-015SR	22.86
2	3106-020SR	30.32
2 1/2	3106-025SR	59.74
3	3106-030SR	77.56
4	3106-040SR	127.76

Industrial Range

Code	Price
01 118 102	9.16
01 118 103	10.68
01 118 104	15.01
01 118 105	21.51
01 118 106	26.89
01 118 107	35.68
11 118 312	74.24
01 118 109	91.12
01 118 110	150.38

Elbow 45°



Standard Range

Size	Code	Price
3/8	-	
1/2	3117-005	4.08
3/4	3117-007	4.14
1	3117-010	5.23
1 1/4	3117-012	7.56
1 1/2	3117-015	9.46
2	3117-020	13.06
2 1/2	3117-025	20.61
3	3117-030	30.69
4	3117-040	63.70
5	3117-050	108.00
6	3117-060	132.26
8	3117-080	296.92

Industrial Range

Code	Price
01 119 101	4.17
01 119 102	4.79
01 119 103	4.88
01 119 104	6.07
01 119 105	8.92
01 119 106	11.06
01 119 107	15.36
11 119 312	24.27
01 119 109	36.16
01 119 110	74.95
11 119 316	127.30
01 119 112	155.36
01 119 113	355.24



Pressure Ratings

ABS systems are suitable for continuous use at the following maximum operating pressures:

Pipes:

- Class B - 6 bar
- Class C - 9 bar
- Class D - 12 bar
- Class E - 15 bar
- Class T - 12 bar

Fittings:

- 3/8" to 4" - 15 bar
- 6" - 12 bar
- 8" - 9 bar
- 10" and 12" - 6 bar

All pressure ratings are calculated at 20°C

plain fittings inch sizes

Bend 90°

Long Radius



Standard Range

Size	Code	Price
3	3106-030LR	95.09
4	3106-040LR	191.30
5	-	
6	3106-060LR	422.52
8	-	

Industrial Range

Code	Price
01 309 109	111.34
01 309 110	225.10
11 309 316	422.35
01 309 112	497.29
01 309 113	1090.20

Bend 45°

Long Radius



Standard Range

Size	Code	Price
1	-	
1 1/2	3117-015LR	22.50
2	3117-020LR	37.15
3	3117-030LR	74.75
4	3117-040LR	152.87
5	-	
6	-	
8	-	

Industrial Range

Code	Price
01 310 104	15.60
01 310 106	26.44
01 310 107	43.75
01 310 109	91.36
01 310 110	179.87
11 310 316	355.47
01 310 112	414.01
01 310 113	826.71

Bend 22 1/2°

Long Radius



Standard Range

Size	Code	Price
1	-	
1 1/2	3116-015LR	31.14
2	3116-020LR	52.00
2 1/2	-	
3	3116-030LR	109.22
4	3116-040LR	222.23
5	-	
6	3116-060LR	488.23
8	-	

Industrial Range

Code	Price
01 311 104	21.65
01 311 106	36.65
01 311 107	61.15
11 311 312	91.36
01 311 109	128.48
01 311 110	261.48
11 311 316	485.41
01 311 112	574.60
01 311 113	1153.80



Industrial vs Standard Range

The Durapipe industrial ABS system has a proven 30 year track record as an industrial grade system. It is approved under DWI Regulation 31 and by WRAS (Water Regulations Advisory Scheme). Standard ABS systems are ideal for applications involving water and weak chemicals, and also carry WRAS Approval.

Socket



Standard Range

Size	Code	Price
3/8	-	
1/2	3129-005	1.61
3/4	3129-007	1.79
1	3129-010	2.07
1 1/4	3129-012	3.60
1 1/2	3129-015	4.24
2	3129-020	6.03
2 1/2	3129-025	13.06
3	3129-030	24.01
4	3129-040	34.18
5	3129-050	66.48
6	3129-060	85.30
8	3129-080	179.05

Industrial Range

Code	Price
01 100 101	1.69
01 100 102	1.83
01 100 103	2.06
01 100 104	2.38
01 100 105	4.17
01 100 106	5.01
01 100 107	7.04
11 100 312	15.36
01 100 109	28.31
01 100 110	40.18
11 100 316	78.77
01 100 112	100.41
01 100 113	200.54

O-Ring Socket



Standard Range

Size	Code	Price
2	-	
3	-	
4	-	
6	-	
8	-	

Industrial Range

Code	Price
01 305 107	23.09
01 305 109	38.54
01 305 110	58.29
01 305 112	221.28
01 305 113	263.21

Adaptor Socket

Inch x mm



Standard Range

Size	Code	Price
1/2x20	-	
3/4x25	-	
1x32	-	
1 1/4x40	-	
1 1/2x50	-	
2x63	-	
3x90	-	
4x110	-	
6x160	-	

Industrial Range

Code	Price
11 345 102	2.50
11 345 103	2.82
11 345 104	3.43
11 345 105	4.64
11 345 106	6.77
11 345 107	15.36
11 345 109	28.08
11 345 110	45.43
11 345 112	105.40

Reducing Socket



Standard Range

Size	Code	Price
3/4x1 1/2	-	
1x3/4	-	
1 1/4x1	-	
1 1/2x1 1/4	-	
2x1 1/2	-	
3x2	-	
4x3	-	
6x4	-	
8x6	-	

Industrial Range

Code	Price
01 114 122	2.19
01 114 124	2.75
01 114 125	5.23
01 114 127	5.82
01 114 130	9.07
01 114 135	26.89
01 114 141	40.18
01 114 147	145.61
01 114 152	225.31

plain fittings inch sizes

Union

EPDM O-Ring



Standard Range

Size	Code	Price
3/8	-	-
1/2	3197-005	8.37
3/4	3197-007	9.08
1	3197-010	12.23
1 1/4	3197-012	14.92
1 1/2	3197-015	20.61
2	3197-020	26.91
2 1/2*	3197-025	65.15
3**	3197-030	99.68
4**	3197-040	134.26

Industrial Range

Code	Price
01 205 101	8.21
01 205 102	9.89
01 205 103	10.68
01 205 104	14.38
01 205 105	17.61
01 205 106	24.27
01 205 107	31.65
11 205 312	76.59
01 205 109	117.31
01 205 110	158.02

* Maximum pressure 10 bar

** Maximum pressure 9 bar

Union

FPM O-Ring



Standard Range

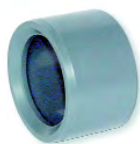
Size	Code	Price
3/8	-	-
1/2	-	-
3/4	-	-
1	-	-
1 1/4	-	-
1 1/2	-	-
2	-	-
3**	-	-

Industrial Range

Code	Price
01 204 101	8.71
01 204 102	10.57
01 204 103	11.37
01 204 104	15.31
01 204 105	18.70
01 204 106	25.79
01 204 107	33.71
01 204 109	127.29

** Maximum pressure 9 bar

Reducing Bush



Standard Range

Size	Code	Price
1/2x3/8	3137-073	1.53
3/4x1/2	3137-101	1.61
1x1/2	3137-130	2.07
1x3/4	3137-131	2.07
1 1/4x1/2	-	-
1 1/4x3/4	-	-
1 1/4x1	3137-168	2.70
1 1/2x1/2	-	-
1 1/2x3/4	3137-210	3.52
1 1/2x1	3137-211	3.52
1 1/2x1 1/4	3137-212	3.52
2x3/4	-	-
2x1	3137-249	4.70
2x1 1/4	3137-250	4.70
2x1 1/2	3137-251	4.70
2 1/2x1 1/2	3137-291	8.01
2 1/2x2	3137-292	8.37
3x1 1/2	3137-337	14.40
3x2	3137-338	14.40
3x2 1/2	3137-339	14.40
4x2	3137-420	18.00
4x3	3137-422	18.00
5x4	3137-490	52.00
6x4	3137-532	55.44
6x5	-	-
8x6	3137-585	119.67

Industrial Range

Code	Price
01 109 121	1.43
01 109 122	1.83
01 109 123	2.38
01 109 124	2.38
01 109 116	3.32
01 109 117	3.32
01 109 125	3.32
01 109 118	4.17
01 109 119	4.17
01 109 126	4.17
01 109 127	4.17
01 109 120	5.45
01 109 128	5.45
01 109 129	5.45
01 109 130	5.45
-	-
01 109 131	9.89
01 109 134	15.36
01 109 135	15.36
01 109 136	16.91
-	-
01 109 141	21.17
01 329 142	61.15
01 109 147	65.19
01 329 148	80.44
01 109 152	134.47

Cap



Standard Range

Size	Code	Price
3/8	-	-
1/2	3147-005	1.53
3/4	3147-007	1.79
1	3147-010	2.07
1 1/4	3147-012	3.34
1 1/2	3147-015	5.12
2	3147-020	6.66
2 1/2	3147-025	16.74
3	3147-030	19.71
4	3147-040	30.15
5	3147-050	53.55
6	3147-060	80.00
8	3147-080	146.70

Industrial Range

Code	Price
01 140 101	1.43
01 140 102	1.79
01 140 103	2.06
01 140 104	2.37
01 140 105	3.96
01 140 106	6.07
01 140 107	7.71
11 149 312	19.75
01 140 109	23.18
01 140 110	35.44
-	-
-	-

Stub Flange

Serrated Face



Standard Range

Size	Code	Price
1/2	3154-005	1.89
3/4	3154-007	2.35
1	3154-010	2.41
1 1/4	3154-012	4.51
1 1/2	3154-015	6.37
2	3154-020	9.82
2 1/2	3154-025	15.57
3	3154-030	19.16
4	3154-040	24.83
5	3154-050	57.05
6	3154-060	64.51
8	3154-080	134.96

Industrial Range

Code	Price
-	
-	
-	
-	
-	
01 135 107	11.52
11 135 312	18.32
01 135 109	22.58
01 135 110	29.28
11 135 316	67.08
01 135 112	75.92
01 135 113	151.72

Full Face Flange

Drilled BS 10 Table D&E



Standard Range

Size	Code	Price
1/2	3151-005E	8.92
3/4	3151-007E	9.08
1	3151-010E	9.54
1 1/4	3151-012E	11.43
1 1/2	3151-015E	13.41
2	3151-020E	17.54
3	3151-030E	32.94
4 Table D	-	
4 Table E	3151-040E	43.88
6	-	

Industrial Range

Code	Price
01 130 102	10.49
01 130 103	10.68
01 130 104	11.19
01 130 105	13.44
01 130 106	15.69
01 130 107	20.58
01 130 109	39.49
01 317 110	47.81
01 130 110	51.63
01 130 112	96.13

Full Face Flange

Drilled BS4504 PN10/16



Standard Range

Size	Code	Price
1/2	3151-005N	8.92
3/4	3151-007N	9.08
1	3151-010N	9.54
1 1/4	3151-012N	11.43
1 1/2	3151-015N	13.31
2	3151-020N	17.54
3	3151-030N	32.94
4	3151-040N	43.88
6	-	

Industrial Range

Code	Price
01 319 102	10.95
01 319 103	11.06
01 319 104	11.64
01 319 105	14.04
01 319 106	16.42
01 319 107	21.42
01 319 109	40.70
01 319 110	53.75
01 319 112	99.68

Full Face Flange

Drilled ANSI 150



Standard Range

Size	Code	Price
1/2	-	
3/4	-	
1	-	
1 1/2	-	
2	-	
3	-	
4	-	
6	-	

Industrial Range

Code	Price
01 322 102	10.95
01 322 103	11.06
01 322 104	11.64
01 322 106	16.42
01 322 107	21.42
01 322 109	40.70
01 322 110	53.75
01 322 112	99.68

Full Face Flange

Undrilled



Standard Range

Size	Code	Price
1/2	-	
3/4	-	
1	-	
1 1/4	-	
1 1/2	-	
2	-	
3	-	
4	-	
6	-	

Industrial Range

Code	Price
01 129 102	10.32
01 129 103	10.49
01 129 104	11.06
01 129 105	12.95
01 129 106	15.36
01 129 107	20.11
01 129 109	38.07
01 129 110	50.24
01 129 112	94.24

flanges inch sizes

Blind Flange

Drilled BS 10 Table D&E



Standard Range

Size	Code	Price
2	3153-020E	39.94
3	3153-030E	70.19
4 Table D	3153-040D	89.09
4 Table E	3153-040E	89.09
6	3153-060E	156.21
8	-	

Industrial Range

Code	Price
01 313 107	37.37
01 313 109	66.15
01 313 110	85.39
01 313 110	85.39
01 313 112	155.61
01 313 113	218.27

Blind Flange

Drilled BS4504 PN10/16



Standard Range

Size	Code	Price
2	3153-020N	39.94
2 1/2	3153-025N	50.26
3	3153-030N	70.19
4	3153-040N	89.09
5	-	
6	3153-060N	156.21
8*	-	

*PN16 only

Industrial Range

Code	Price
01 323 107	37.37
11 323 312	50.24
01 323 109	66.15
01 323 110	85.39
11 323 316	121.35
01 323 112	155.61
01 323 113	218.27

Blind Flange

Drilled ANSI 150



Standard Range

Size	Code	Price
2	3153-020A	34.79
3	3153-030A	61.12
4	3153-040A	80.62
6	-	
8	-	

Industrial Range

Code	Price
01 325 107	37.37
01 325 109	66.15
01 325 110	85.39
01 325 112	155.61
01 325 113	218.27

Blind Flange

Undrilled



Standard Range

Size	Code	Price
1	-	
1 1/2	-	
2	3153-020U	39.94
3	3153-030U	70.19
4	3153-040U	88.87
6	3153-060U	156.21
8	-	

Industrial Range

Code	Price
01 131 104	29.02
01 131 106	33.55
01 131 107	37.37
01 131 109	66.15
01 131 110	85.39
01 131 112	155.61
01 131 113	218.27



Flange Pressure Ratings

Not all ABS flanges carry the same pressure rating as the pipe.

This is the maximum working pressure of the flange at 20°C:-

BS 10 Table D: 100 psi (6.9 bar)

BS 10 Table E: 200 psi (13.8 bar)

BS 4504 PN10: 10 bar

BS 4504 PN16: 16 bar

ANSI 150: 10 bar

Take care to select the correct flange for the job.

Backing Ring Table D/E

Galvanised Mild Steel



Size	Standard Range	Industrial Range	Price
1/2	860-005-12E	-	5.71
3/4	860-007-12E	-	6.47
1	860-010-12E	-	6.79
1 1/4	860-012-12E	-	7.00
1 1/2	860-015-12E	-	8.59
2	860-020-11E	860-020-11E	12.18
3	860-030-11E	860-030-11E	18.50
4 Table D	860-040-11D	860-040-12D	23.91
4 Table E	860-040-11E	860-040-12E	23.91
6	860-060-12E	860-060-12E	40.45
8	860-080-12E	860-080-13E	54.73
10	-	860-100-12E	77.42
12	-	860-120-12E	114.24

Backing Ring NP10/16

Galvanised Mild Steel



Size	Standard Range	Industrial Range	Price
1/2	860-005-12NP	-	6.47
3/4	860-007-12NP	-	6.85
1	860-010-12NP	-	8.13
1 1/4	860-012-12NP	-	8.64
1 1/2	860-015-12NP	-	9.48
2	860-020-11NP	860-020-11NP	13.39
2 1/2	860-025-11NP	860-025-11NP	18.33
3	860-030-11NP	860-030-11NP	21.20
4	860-040-11NP	860-040-12NP	27.11
5	860-050-11NP	860-050-11NP	37.75
6	860-060-12NP	860-060-12NP	43.04
8 PN10	860-080-12N	860-080-13N	60.52
8 PN16	860-080-12P	860-080-13P	60.52
10*	-	860-100-12N	84.04
12*	-	860-120-12N	114.24

* NP10 only

Backing Ring ASA 150

Galvanised Mild Steel



Size	Standard Range	Industrial Range	Price
1/2	860-005-12A	-	6.47
3/4	860-007-12A	-	6.85
1	860-010-12A	-	8.13
1 1/4	860-012-12A	-	8.64
1 1/2	860-015-12A	-	9.48
2	860-020-11A	860-020-11A	13.39
3	860-030-11A	860-030-11A	21.20
4	860-040-11A	860-040-12A	27.11
6	860-060-12A	860-060-12A	43.04
8	860-080-12A	860-080-13A	59.39

Valve Support Plate

Galvanised Mild Steel - NP10/16



Size	Code	Price
1/2	03 458 102	17.97
3/4	03 458 103	19.13
1	03 458 104	20.20
1 1/4	03 458 105	23.59
1 1/2	03 458 106	28.94
2	03 458 107	32.45
2 1/2	03 459 312	36.01
3	03 458 109	44.12
4	03 458 110	52.31
6	03 458 112	81.28
8*	03 458 113	146.17

*NP16 only

Stub Gasket

EPDM



Size	Standard Range	Industrial Range	Price
1/2	861-_-005	861-_-005	0.50
3/4	861-_-007	861-_-007	0.58
1	861-_-010	861-_-010	0.64
1 1/4	861-_-012	861-_-012	0.80
1 1/2	861-_-015	861-_-015	0.96
2	861-_-020	861-_-020	1.65
2 1/2	861-_-025	861-_-025	2.02
3	861-_-031	861-_-031	2.17
4	861-_-040	861-_-040	3.16
5	861-_-050	861-_-050	4.07
6	861-_-180	861-_-060	4.66
8	861-_-225	861-_-081	9.25
10	861-_-280	861-_-280	11.34
12	861-_-120	861-_-120	12.86

Complete code when ordering

Insert 'ISO' for NP10/16; 'A' for ANSI 150; 'E' for Table D/E

Stub Gasket

FPM



Size	Standard Range	Industrial Range	Price
1/2	862-_-005	862-_-005	2.34
3/4	862-_-007	862-_-007	3.48
1	862-_-010	862-_-010	4.59
1 1/4	862-_-012	862-_-012	7.36
1 1/2	862-_-015	862-_-015	8.05
2	862-_-020	862-_-020	10.60
2 1/2	862-_-025	862-_-025	15.34
3	862-_-031	862-_-031	20.01
4	862-_-040	862-_-040	34.14
5	862-_-050	862-_-050	56.98
6	862-_-180	862-_-060	56.98
8	862-_-225	862-_-081	68.24
10	862-_-280	862-_-280	92.89
12	862-_-120	862-_-120	96.97

Complete code when ordering

Insert 'ISO' for NP10/16; 'A' for ANSI 150; 'E' for Table D/E

Gasket

EPDM - full face



Size	Standard Range	Industrial Range	Price
1/2	863-_-005	863-_-005	1.74
3/4	863-_-007	863-_-007	1.96
1	863-_-010	863-_-010	2.34
1 1/4	863-_-012	863-_-012	2.79
1 1/2	863-_-015	863-_-015	3.31
2	863-_-020	863-_-020	4.07
3	863-_-031	863-_-031	5.71
4	863-_-040	863-_-040	7.98
6	863-_-180	863-_-060	12.86
8	863-_-225	863-_-081	15.99

Complete code when ordering

Insert 'ISO' for NP10/16; 'A' for ANSI 150; 'E' for Table D/E

Gasket

FPM - full face



Size	Standard Range	Industrial Range	Price
1/2	864-_-005	864-_-005	13.82
3/4	864-_-007	864-_-007	15.93
1	864-_-010	864-_-010	19.84
1 1/4	864-_-012	864-_-012	21.81
1 1/2	864-_-015	864-_-015	25.84
2	864-_-020	864-_-020	33.22
3	864-_-031	864-_-031	47.05
4	864-_-040	864-_-040	64.34
6	864-_-180	864-_-060	104.63
8	864-_-225	864-_-081	113.96

Complete code when ordering

Insert 'ISO' for NP10/16; 'A' for ANSI 150; 'E' for Table D/E

adaptor fittings inch sizes

Tee 90°

Plain Socket
x BSP Female Thread



Standard Range

Size	Code	Price
1/2	3102-005	5.86
3/4	3102-007	6.50
1	3102-010	7.83
1 1/4	3102-012	16.37
1 1/2	3102-015	18.07
2	3102-020	25.40
2 1/2	3102-025	39.60
3	3102-030	47.51

Industrial Range

Code	Price
-	
-	
-	
-	
-	
-	
-	
-	

Elbow 90°

Plain Socket
x BSP Female Thread



Standard Range

Size	Code	Price
1/2	3107-005	5.47
3/4	3107-007	5.86
1	3107-010	7.56
1 1/4	3107-012	15.48
1 1/2	3107-015	17.28
2	3107-020	24.48
3	3107-030	45.26

Industrial Range

Code	Price
01 116 102	6.41
01 116 103	6.91
01 116 104	8.92
-	
01 116 106	20.35
01 116 107	28.81
-	

Socket

Plain Socket
x BSP Female Thread



Standard Range

Size	Code	Price
1/2	3135-005BT	4.41
3/4	3135-007BT	4.87
1	3135-010BT	6.03
1 1/4	3135-012BT	9.46
1 1/2	3135-015BT	11.06
2	3135-020BT	14.58
3	3135-030BT	39.86
4	3135-040BT	46.77

Industrial Range

Code	Price
01 101 102	5.23
01 101 103	5.73
01 101 104	7.04
01 101 105	11.06
01 101 106	12.95
01 101 107	17.15
01 101 109	46.87
-	

Union

Plain Socket
x Brass BSP Female
Thread



Standard Range

Size	Code	Price
1/2	-	
3/4	-	
1	-	
1 1/4	-	
1 1/2	-	
2	-	

Industrial Range

Code	Price
01 212 102	13.92
01 212 103	20.20
01 212 104	23.42
01 212 105	32.10
01 212 106	45.20
01 212 107	67.34

Union

Plain Socket
x Brass BSP Male
Thread



Standard Range

Size	Code	Price
1/2	-	
3/4	-	
1	-	
1 1/4	-	
1 1/2	-	
2	-	

Industrial Range

Code	Price
01 217 102	15.01
01 217 103	22.02
01 217 104	25.21
01 217 105	35.44
01 217 106	48.77
01 217 107	71.16

Reducing Bush

Plain Spigot
x BSP Female Thread



Standard Range

Size	Code	Price
1/2x3/8	3138-073	3.15
3/4x1/2	3138-101	3.67
1x3/4	3138-131	4.87

Industrial Range

Code	Price
01 111 121	3.67
01 111 122	4.28
01 111 124	5.73

Adaptor

Plain Spigot
x BSP Female Thread



Standard Range

Size	Code	Price
1/2	3178-005BT	2.90
3/4	3178-007BT	3.67
1	3178-010BT	5.12
1 1/4	3178-012BT	6.50
1 1/2	3178-015BT	8.72
2	3178-020BT	12.23

Industrial Range

Code	Price
01 153 102	3.34
01 153 103	4.28
01 153 104	6.07
01 153 105	7.63
01 153 106	10.32
01 153 107	14.38

Adaptor

Plain Socket
x BSP Male Thread



Standard Range

Size	Code	Price
3/8	-	
1/2	3136-005BT	2.52
3/4	3136-007BT	3.34
1	3136-010BT	4.58
1 1/4	3136-012BT	6.37
1 1/2	3136-015BT	8.28
2	3136-020BT	11.88
3	3136-030BT	34.18
4	3136-040BT	45.89

Industrial Range

Code	Price
01 151 101	2.34
01 151 102	3.19
01 151 103	3.34
01 151 104	5.23
01 151 105	7.40
01 151 106	9.76
01 151 107	13.92
-	
-	

Hexagon Nipple

Plain Spigot
x BSP Male Thread



Standard Range

Size	Code	Price
3/8	-	
1/2	-	
3/4	-	
1	-	
1 1/4	-	
1 1/2	-	
2	-	

Industrial Range

Code	Price
01 107 101	2.75
01 107 102	2.95
01 107 103	3.96
01 107 104	5.45
01 107 105	6.91
01 107 106	7.85
01 107 107	9.89

Barrel Nipple

Plain Spigot
x BSP Male Thread



Standard Range

Size	Code	Price
3/8	3181-1-020BT	2.90
1/2	3182-1-020BT	3.15
3/4	3183-1-020BT	3.97
1	3184-1-030BT	5.12
1 1/4	3185-1-035BT	7.02
1 1/2	3186-1-035BT	7.65
2	3187-1-040BT	9.89
2 1/2	3188-1-050BT	23.13
3	3189-1-050BT	26.08
4	3190-1-060BT	34.75

Industrial Range

Code	Price
-	
-	
-	
-	
-	
-	
-	
-	
01 316 109	30.71
01 316 110	40.91

Tank Connector

Plain Spigot
x BSP Male Thread



Standard Range

Size	Code	Price
1/2	3143-005	5.47
3/4	3143-007	6.03
1	3143-010	13.06
1 1/4	3143-012	33.09
1 1/2	3143-015	36.45
2	3143-020	43.55
2 1/2	3143-025	57.14
3	3143-030	65.32
4	3143-040	98.00
6	3143-060	264.48

Industrial Range

Code	Price
01 235 102	6.41
01 235 103	7.04
-	
-	
-	
-	
-	
-	
-	
-	
-	

Hose Adaptor

Hose Tail
x BSP Male Thread



Standard Range

Size	Code	Price
1/2	-	
3/4	-	
1	-	

Industrial Range

Code	Price
01 157 102	4.64
01 157 103	6.07
01 157 104	7.04

threaded fittings inch sizes

Elbow 90°

BSP Female Thread



Standard Range

Size	Code	Price
1/2	-	
3/4	-	
1	-	
1 1/2	-	
2	-	

Industrial Range

Code	Price
01 117 102	6.77
01 117 103	6.91
01 117 104	8.92
01 117 106	17.85
01 117 107	26.89

Socket

BSP Female Thread



Standard Range

Size	Code	Price
1/2	-	
3/4	-	
1	-	
1 1/4	-	
1 1/2	-	
2	-	
3	-	

Industrial Range

Code	Price
01 102 102	6.41
01 102 103	7.14
01 102 104	8.93
01 102 105	12.22
01 102 106	13.77
01 102 107	17.29
01 102 109	47.60

Reducing Bush

BSP Male Thread
x BSP Female Thread



Standard Range

Size	Code	Price
1/2x3/8	-	
3/4x1/2	-	
1x3/4	-	

Industrial Range

Code	Price
01 113 121	3.96
01 113 122	4.51
01 113 124	5.82

Plug

BSP Male Thread



Standard Range

Size	Code	Price
3/8	-	
1/2	-	
3/4	-	
1	-	
1 1/4	-	
1 1/2	-	
2	-	

Industrial Range

Code	Price
01 155 101	3.12
01 155 102	3.96
01 155 103	4.88
01 155 104	5.82
01 155 105	7.71
01 155 106	9.76
01 155 107	10.95

Cap

BSP Female Thread



Standard Range

Size	Code	Price
3/8	-	
1/2	-	
3/4	-	
1	-	
1 1/4	-	
1 1/2	-	
2	-	
3	-	

Industrial Range

Code	Price
01 141 101	5.37
01 141 102	6.91
01 141 103	7.85
01 141 104	8.47
01 141 105	9.07
01 141 106	11.64
01 141 107	14.76
01 141 109	50.92

Hexagon Nipple

BSP Male Thread



Standard Range

Size	Code	Price
3/8	-	
1/2	-	
3/4	-	
1	-	
1 1/4	-	
1 1/2	-	
2	-	

Industrial Range

Code	Price
01 106 101	3.12
01 106 102	3.46
01 106 103	4.51
01 106 104	5.82
01 106 105	8.09
01 106 106	9.50
01 106 107	11.52

Barrel Nipple

BSP Male Thread



Standard Range

Size	Code	Price
3/8	3181-020BT	3.40
1/2	3182-020BT	3.52
3/4	3183-020BT	4.14
1	3184-030BT	5.47
1 1/4	3185-035BT	7.12
1 1/2	3186-035BT	7.72
2	3187-040BT	9.89
2 1/2	3188-050BT	22.41
3	3189-050BT	26.08
4	3190-060BT	35.09

Industrial Range

Code	Price
-	
-	
-	
-	
-	
-	
-	
-	
-	

Back Nut

BSP Female Thread



Standard Range

Size	Code	Price
3/8	-	
1/2	3142-005BT	2.34
3/4	3142-007BT	2.52
1	3142-010BT	4.41
1 1/4	3142-012BT	9.54
1 1/2	3142-015BT	10.87
2	3142-020BT	11.43
2 1/2	3142-025BT	17.28
3	3142-030BT	19.52
4	3142-040BT	24.57

Industrial Range

Code	Price
01 159 101	2.34
01 159 102	2.75
01 159 103	2.95
01 159 104	5.23
01 159 105	11.19
01 159 106	12.73
01 159 107	13.44
-	
-	
-	

PTFE Tape

BS7786

Roll Size: 12m x 12m x 0.075mm

Order Code: 767-120

Price: 0.87



Making Threaded Joints

We recommend the use of PTFE tape or Blue 75 Joint Compound for all threaded joints on plastic piping. Please check with our technical department before using any other type of pipe joint compounds, as these can cause stress cracking and lead to failure of the system.

When using PTFE tape, follow the following guidelines:

- Always wrap tape clockwise
- Apply 2 to 3 wraps
- Tighten hand-tight plus 1 1/2 to 2 turns
- Do not overtighten

