

spigot fittings for IR and butt fusion welding

Tee 90°



PN10

Size	Code	Price
20	72 006 0020 11	5.00
25	72 006 0025 11	5.00
32	72 006 0032 11	6.25
40	72 006 0040 11	9.90
50	72 006 0050 11	13.40
63	72 006 0063 11	20.85
75	72 006 0075 11	42.00
90	72 006 0090 11	62.55
110	72 006 0110 11	91.89
125	72 006 0125 11	126.42
140	72 006 0140 11	160.81
160	72 006 0160 11	269.50
180	72 006 0180 11	345.46
200	72 006 0200 17	495.13
225	72 006 0225 11	588.92
250	72 006 0250 11	748.99
280	72 006 0280 11	1012.55
315	72 006 0315 11	1438.43

Multi-Bend 90° PN10

Elongated



Size	Code	Price
20	72 068 0020 11	7.47
25	72 068 0025 11	7.79
32	72 068 0032 11	8.07
40	72 068 0040 11	10.52
50	72 068 0050 11	13.21
63	72 068 0063 11	18.84
75	72 068 0075 11	26.01
90	72 068 0090 11	37.78
110	72 068 0110 11	71.85
125	72 068 0125 11	101.23
140	72 068 0140 11	135.35
160	72 068 0160 11	164.91
180	72 068 0180 11	195.24
200	72 068 0200 11	290.93
225	72 068 0225 11	347.06

Reducing Tee 90°



PN10

Size	Code	Price
90x32	72 016 9032 11	57.92
90x50	72 016 9050 11	59.57
110x32	72 016 1132 11	85.47
110x50	72 016 1150 11	87.27
125x63	72 016 1263 11	122.09
140x63	72 016 1463 11	153.37
140x75	72 016 1475 11	153.37
140x90	72 016 1490 11	156.34
140x110	72 016 1411 11	156.34
160x125	72 016 1612 11	258.37
180x63	72 016 1863 11	320.90
180x75	72 016 1875 11	320.90
225x125	72 016 2212 11	558.40
250x110	72 016 2511 11	737.08
250x160	72 016 2516 11	751.97

Bend 90°

PN10

Size	Code	Price
250	72 001 0250 11	553.18
280	72 001 0280 11	719.22
315	72 001 0315 11	993.20



Reducing Tee 90°

Elongated



PN10

Size	Code	Price
63x50	72 065 6350 11	30.23
75x32	72 065 7532 11	47.21
75x50	72 065 7550 11	47.21
75x63	72 065 7563 11	48.24
90x63	72 065 9063 11	67.31
90x75	72 065 9075 11	67.90
110x63	72 065 1163 11	99.77
110x75	72 065 1175 11	99.77
110x90	72 065 1190 11	101.12
125x90	72 065 1290 11	138.64
125x110	72 065 1211 11	138.64
160x63	72 065 1663 11	273.25
160x75	72 065 1675 11	275.48
160x90	72 065 1690 11	275.48
160x110	72 065 1611 11	282.19
180x90	72 065 1890 11	409.49
180x160	72 065 1816 11	409.49
200x63	72 065 2063 11	460.12
200x90	72 065 2090 11	464.58
200x125	72 065 2012 11	475.01
200x160	72 065 2016 11	480.21
225x75	72 065 2275 11	638.81
225x90	72 065 2290 11	638.81
225x110	72 065 2211 11	641.78
225x160	72 065 2216 11	644.04
225x180	72 065 2218 11	646.25

Elbow 45°

Elongated



PN10

Size	Code	Price
20	72 060 0020 11	8.56
25	72 060 0025 11	9.01
32	72 060 0032 11	9.69
40	72 060 0040 11	12.44
50	72 060 0050 11	17.27
63	72 060 0063 11	31.44
75	72 060 0075 11	38.28
90	72 060 0090 11	48.84
110	72 060 0110 11	93.67
125	72 060 0125 11	115.54
140	72 060 0140 11	151.89
160	72 060 0160 11	174.96
180	72 060 0180 11	262.07
200	72 060 0200 11	288.13
225	72 060 0225 11	311.97
250	72 060 0250 11	603.81
280	72 060 0280 11	911.29
315	72 060 0315 11	1140.61

Cap

Elongated



PN10

Size	Code	Price
20	72 064 0020 11	7.29
25	72 064 0025 11	7.97
32	72 064 0032 11	10.04
40	72 064 0040 11	12.44
50	72 064 0050 11	16.23
63	72 064 0063 11	21.45
75	72 064 0075 11	33.21
90	72 064 0090 11	50.33
110	72 064 0110 11	68.19
125	72 064 0125 11	73.71
140	72 064 0140 11	92.18
160	72 064 0160 11	103.19
180	72 064 0180 11	134.18
200	72 064 0220 11	151.14
225	72 064 0225 11	167.53
250	72 064 0250 11	299.30
280	72 064 0280 11	425.14
315	72 064 0315 11	571.05

PURAD pp-pure spigot fittings

Reducer

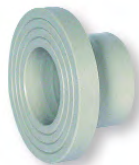
Concentric



PN10

Size	Code	Price
25x20	72 067 2520 11	6.25
32x20	72 067 3220 11	6.93
32x25	72 067 3225 11	6.93
40x20	72 067 4020 11	10.04
40x25	72 067 4025 11	10.04
40x32	72 067 4032 11	10.04
50x25	72 067 5025 11	12.44
50x32	72 067 5032 11	12.44
50x40	72 067 5040 11	12.44
63x32	72 067 6332 11	16.53
63x40	72 067 6340 11	16.53
63x50	72 067 6350 11	16.53
75x50	72 067 7550 11	25.62
75x63	72 067 7563 11	25.62
90x63	72 067 9063 11	35.89
90x75	72 067 9075 11	35.89
110x63	72 067 1163 11	48.24
110x90	72 067 1190 11	48.24
125x63	72 067 1263 11	57.92
125x90	72 067 1290 11	57.92
125x110	72 067 1211 11	58.07
140x125	72 067 1412 11	83.26
160x90	72 067 1690 11	111.10
160x110	72 067 1611 11	111.53
160x125	72 067 1612 11	111.53
160x140	72 067 1614 11	107.81
180x125	72 067 1812 11	144.44
180x160	72 067 1816 11	144.44
200x160	72 067 2016 11	158.60
225x160	72 067 2216 11	254.63
250x160	72 067 2516 11	344.71
250x200	72 067 2521 11	360.36
250x225	72 067 2522 11	360.36
280x250	72 067 2825 11	480.21
315x200	72 067 3120 11	617.97
315x225	72 067 3122 11	617.97
315x250	72 067 3125 11	617.97

Stub Flange



Also available to ANSI and JIS Standards. Please enquire for details.

PN10

Size	Code	Price
20	72 012 0020 11	5.66
25	72 012 0025 11	5.66
32	72 012 0032 11	6.73
40	72 012 0040 11	7.97
50	72 012 0050 11	9.75
63	72 012 0063 11	12.20
75	72 012 0075 11	14.37
90	72 012 0090 11	20.70
110	72 012 0110 11	26.50
125	72 012 0125 11	32.02
140	72 012 0140 11	37.39
160	72 012 0160 11	47.07
180	72 012 0180 11	73.12
200	72 012 0200 11	80.56
225	72 012 0225 11	89.63
250	72 012 0250 11	136.10
280	72 012 0280 11	148.78
315	72 012 0315 11	175.72

Stub Flange

Chamfered



For use with butterfly valve

PN10

Size	Code	Price
110	72 012 9110 11	33.21
140	72 012 9140 11	46.75
160	72 012 9160 11	58.82
180	72 012 9180 11	91.42
200	72 012 9200 11	100.66
225	72 012 9225 11	112.13
250	72 012 9250 11	170.50
280	72 012 9280 11	186.13
315	72 012 9315 11	218.89

Backing Ring

Drilled to NP10



Polypropylene with steel core. Also available in ANSI and JIS standards. Please enquire for details.

NP10

Size	Code	Price
20	11 014 0020 11	6.79
25	11 014 0025 11	7.46
32	11 014 0032 11	9.55
40	11 014 0040 11	12.11
50	11 014 0050 11	14.14
63	11 014 0063 11	16.40
75	11 014 0075 11	18.20
90	11 014 0090 11	21.50
110	11 014 0110 11	25.57
125	11 014 0125 11	25.57
140	11 014 0140 11	39.38
160	11 014 0160 11	45.09
180	11 014 0180 11	45.09
200	11 014 0200 11	64.20
225	11 014 0225 11	64.20
250	11 014 0250 11	102.52
280	11 014 0280 11	102.52
315	11 014 0315 11	128.83

Union

FPM Seals



PN10

Size	Code	Price
20	72 024 0120 11	34.25
25	72 024 0125 11	37.22
32	72 024 0132 11	44.83
40	72 024 0140 11	63.29
50	72 024 0150 11	89.63
63	72 024 0163 11	121.80

FDA Approved O-Ring

Male Adaptor

BSP or NPT male thread



PN10 - BSP

Size	Code	Price
20 x 1/2	72 033 2020 11	7.39
25 x 3/4	72 033 2525 11	8.86
32 x 1	72 033 3232 11	11.25
40 x 1 1/4	72 033 4040 11	13.47
50 x 1 1/2	72 033 5050 11	22.04
63 x 2	72 033 6363 11	27.85

Restrained Fitting

Provides anchor point in pipe runs



Shown here in PVDF. Machined. Requires a correctly sized retaining clip.

PN10

Size	Code	Price
20	72 301 0020 11	68.19
25	72 301 0025 11	71.17
32	72 301 0032 11	71.17
40	72 301 0040 11	73.55
50	72 301 0050 11	78.78
63	72 301 0063 11	83.85
75	72 301 0075 11	107.51
90	72 301 0090 11	123.88
110	72 301 0110 11	142.05
125	72 301 0125 11	189.85
140	72 301 0140 11	217.41
160	72 301 0160 11	291.86
180	72 301 0180 11	628.40
200	72 301 0200 11	402.80
225	72 301 0225 11	655.94

Female Adaptor

BSP or NPT female thread



PN10 - BSP

Size	Code	Price
20 x 1/2	72 032 2020 11	9.46
25 x 3/4	72 032 2525 11	10.65
32 x 1	72 032 3232 11	14.00
40 x 1 1/4	72 032 4040 11	16.08
50 x 1 1/2	72 032 5050 11	25.19
63 x 2	72 032 6363 11	30.09