

PURAD pvdf-uhp spigot fittings

spigot fittings for IR and HPF welding

Tee 90°



PN10

Size	Code	Price
20		
25		
32		
40		
50		
63		
75		
90	35 006 0090 33	168.13
110	35 006 0110 33	179.92
125	35 006 0125 33	299.40
140	35 006 0140 33	329.63
160	35 006 0160 33	399.69
180	35 006 0180 33	463.11
200	35 006 0200 33	549.40
225	35 006 0225 33	703.51
250	35 006 0250 33	876.07
280	35 006 0280 33	1246.27
315	35 006 0315 33	1616.46

PN16

Code	Price
35 006 0020 21	8.48
35 006 0025 21	10.67
35 006 0032 21	15.49
35 006 0040 21	24.63
35 006 0050 21	27.14
35 006 0063 21	57.82
35 006 0075 21	110.31
35 006 0090 21	189.54
35 006 0110 21	235.25
35 006 0125 21	406.33
35 006 0140 21	452.04
35 006 0160 21	519.15
35 006 0180 21	629.78
35 006 0200 21	747.75
35 006 0225 21	957.18
35 006 0250 21	1790.49
35 006 0280 21	2278.67

Tee 90°

Elongated



20		
25		
32		

PN16

35 066 0020 21	18.28
35 066 0025 21	21.09
35 066 0032 21	25.37

Reducing Tee 90°

Elongated



PN10

63 x 32		
90 x 63		
110 x 63		
110 x 90	35 065 1190 33	296.45
160 x 63		
160 x 90	35 065 1690 33	524.32
160 x 110	35 065 1611 33	547.92

PN16

35 065 6332 21	110.61
35 065 9063 21	194.68
35 065 1163 21	292.78
35 065 1190 21	292.78
35 065 1663 21	546.45
35 065 1690 21	566.35
35 065 1611 21	586.27

Non-standard sizes can be made to order. Please enquire for details.

PN10/16*

90 x 63	35 065 9063 31	183.64
110 x 63	35 065 1163 31	283.92
160 x 63	35 065 1663 31	516.94
160 x 90	35 065 1690 31	544.24
160 x 110	35 065 1611 31	570.78

*Branch dimension PN16, Run dimension PN10.

Reducing Tee 90°



PN10

63x20		
63x25		
75x20		
75x25		
75x32		
90x20	35 307 9020 31	727.84
90x25	35 307 9025 31	727.84
90x32	35 307 9032 31	727.84
110x20	35 307 1120 31	886.39
110x25	35 307 1125 31	886.39
110x32	35 307 1132 31	886.39
140x20	35 307 1420 31	1131.21
140x25	35 307 1425 31	1131.21
140x32	35 307 1432 31	1131.21
160x20	35 307 1620 31	1352.45
160x25	35 307 1625 31	1659.23
160x32	35 307 1632 31	1659.23

PN16

35 307 6320 21	448.36
35 307 6325 21	448.36
35 307 7520 21	567.09
35 307 7525 21	580.37
35 307 7532 21	580.37
35 307 9020 21	727.84
35 307 9025 21	727.84
35 307 9032 21	727.84
35 307 1120 21	886.39
35 307 1125 21	886.39
35 307 1132 21	886.39
35 307 1420 21	1131.21
35 307 1425 21	1131.21
35 307 1432 21	1131.21
35 307 1620 21	1659.23
35 307 1625 21	1659.23
35 307 1632 21	1659.23

Instrumentation Fitting

1" BSP or NPT female threaded connection



PN10		
Size	Code	Price
20*		
25*		
32		
40*		
50*		
63		
75*		on application
90	35 031 0090 33	
110	35 031 0110 33	
125	35 031 0125 33	
140	35 031 0140 33	
160	35 031 0160 33	
200*	35 304 0200 33	
225*	35 304 0225 33	

*Machined

PN16

Code	Price
35 304 0020 21	
35 304 0025 21	
35 031 0032 21	
35 304 0040 21	
35 304 0050 21	
35 031 0063 21	
35 304 0075 21	on application
35 031 0090 21	
35 031 0110 21	
35 031 0125 21	
35 031 0140 21	
35 031 0160 21	
35 304 0200 21	
35 304 0225 21	

Instrumentation Fitting

1/8" to 1/2" BSP or NPT female threaded connection



PN10		
Size	Code	Price
20*		
25*		
32		
40*		
50*		
63	35 030 0063 33	140.70
75*		
90	35 030 0090 33	182.15
110	35 030 0110 33	229.06
125	35 030 0125 33	334.95
140	35 030 0140 33	403.23
160	35 030 0160 33	486.27
200*	35 303 0200 33	1478.96
225*	35 303 0225 33	1771.23

*Machined

PN16

35 303 0020 21	103.96
35 303 0025 21	116.64
35 030 0032 21	on application
35 303 0040 21	177.11
35 303 0050 21	222.50
35 030 0063 21	140.70
35 303 0075 21	783.65
35 030 0090 21	189.54
35 030 0110 21	237.62
35 030 0125 21	362.09
35 030 0140 21	416.93
35 030 0160 21	506.64
35 303 0200 21	1478.96
35 303 0225 21	1771.23

Instrumentation Fitting

No threaded connection



PN10		
Size	Code	Price
20*		
25*		
32		
40*		
50*		
63		
75*		
90	35 030 1090 33	192.48
110	35 030 1110 33	241.89
125	35 030 1125 33	353.97
140	35 030 1140 33	426.24
160	35 030 1160 33	513.26
200*	35 303 1200 33	924.24
225*	35 303 1225 33	1107.64

*Machined

PN16

35 303 1020 21	65.05
35 303 1025 21	73.01
35 030 1032 21	84.95
35 303 1040 21	110.76
35 303 1050 21	139.08
35 030 1063 21	148.96
35 303 1075 21	490.41
35 030 1090 21	200.58
35 030 1110 21	250.74
35 030 1125 21	382.73
35 030 1140 21	440.26
35 030 1160 21	534.65
35 303 1200 21	924.74
35 303 1225 21	1107.64



Optional Connections

Instrumentation fittings may be ordered with single or multiple ports and with a variety of connections. Please enquire for details.



PURAD pvdf-uhp spigot fittings

Bend 90°



PN10

Size	Code	Price
110	35 001 0110 33	159.29
125	35 001 0125 33	283.17
140	35 001 0140 33	320.05
160	35 001 0160 33	370.19
180	35 001 0180 33	439.53
200	35 001 0200 33	518.42
225	35 001 0225 33	614.29
250	35 001 0250 33	759.55
280	35 001 0280 33	997.01
315	35 001 0315 33	1284.61

PN16

Code	Price
35 001 0110 21	217.54
35 001 0125 21	384.93
35 001 0140 21	435.09
35 001 0160 21	502.91
35 001 0180 21	597.34
35 001 0200 21	704.99
35 001 0225 21	836.24
35 001 0250 21	1032.40
35 001 0280 21	1554.51

Multi-Bend 90°

Elongated



PN10

Size	Code	Price
20		
25		
32		
40		
50		
63		
75		
90	35 068 0090 33	138.84
110	35 068 0110 33	187.52

PN16

Code	Price
35 068 0020 21	5.68
35 068 0025 21	7.66
35 068 0032 21	15.03
35 068 0040 21	23.60
35 068 0050 21	35.68
35 068 0063 21	60.11
35 068 0075 21	102.25
35 068 0090 21	170.67
35 068 0110 21	255.65

Elbow 45°

Elongated



PN10

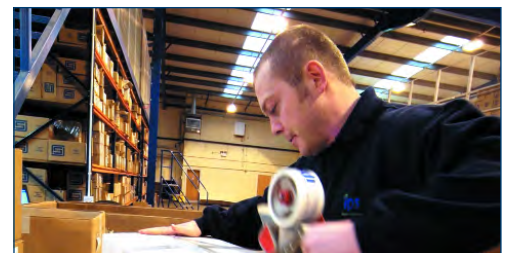
Size	Code	Price
20		
25		
32		
40		
50		
63		
75		
90	35 060 0090 33	123.30
110	35 060 0110 33	160.76
140	35 060 0140 33	368.71
160	35 060 0160 33	415.17

PN16

Code	Price
35 060 0020 21	7.52
35 060 0025 21	8.26
35 060 0032 21	12.17
35 060 0040 21	19.32
35 060 0050 21	25.37
35 060 0063 21	40.11
35 060 0075 21	101.10
35 060 0090 21	144.09
35 060 0110 21	207.23
35 060 0140 21	432.14
35 060 0160 21	484.50

Fast Delivery

We deliver using our own dedicated vehicles or next day carrier. Using our standard delivery service you can expect to receive your order within 24 hours - to your warehouse, factory or job-site



PURAD pvdf-uhp spigot fittings

Union

FPM Seals



Size	Code	Price
20		
25		
32		
40		
50		
63		

FDA Approved O-Ring

PN16

Code	Price
35 024 0020 21	26.10
35 024 0025 21	33.19
35 024 0032 21	40.72
35 024 0040 21	56.78
35 024 0050 21	79.21
35 024 0063 21	118.28

Restrained Fitting

Provides anchor point in pipe runs



Requires a correctly sized retaining clip. See below.

PN10

20*		
25*		
32		
40*		
50*		
63		
75*		
90	35 028 0090 33	114.03
110	35 028 0110 33	168.88
125	35 028 0125 33	254.43
140	35 028 0140 33	300.13
160	35 028 0160 33	387.17
180*	35 301 0180 33	754.73
200*	35 301 0200 33	902.40
225*	35 301 0225 33	1080.64

*Machined

PN16

35 301 0020 21	65.71
35 301 0025 21	103.25
35 028 0032 21	23.31
35 301 0040 21	132.84
35 301 0050 21	177.28
35 028 0063 21	49.12
35 301 0075 21	315.98
35 028 0090 21	120.81
35 028 0110 21	179.92
35 028 0125 21	264.75
35 028 0140 21	314.90
35 028 0160 21	404.87
35 301 0180 21	754.73
35 301 0200 21	902.40
35 301 0225 21	1080.64

Retaining Clip

For restrained fitting.



20	14 348 0020 00	2.79
25	14 348 0025 00	3.08
32	14 348 0032 00	3.31
40	14 348 0040 00	3.48
50	14 348 0050 00	4.28
63*	14 049 0063 00	8.96
75*	14 049 0075 00	10.44
90*	14 049 0090 00	10.76
110*	14 049 0110 00	11.59
125*	14 049 0125 00	12.77
140*	14 049 0140 00	21.50
160*	14 049 0160 00	23.45
180*	14 049 0180 00	26.31
200*	14 049 0200 00	40.74
225*	14 049 0225 00	45.09

*Complete with stainless steel clamp



Free Training

We can provide free installer training either on site or at our bespoke training facility.

Contact Tony Charlton or Tom Tate on:

0800 975 79 71



PURAD pvdf-uhp spigot fittings

Concentric Reducer

Elongated



PN10

Size	Code	Price
25 x 20		
32 x 20		
32 x 25		
40 x 20		
40 x 25		
40 x 32		
50 x 20		
50 x 25		
50 x 32		
50 x 40		
63 x 25		
63 x 32		
63 x 40		
63 x 50		
75 x 50		
75 x 63		
90 x 50		
90 x 63		
90 x 75		
110 x 63		
110 x 90	35 067 1190 33	59.44
140 x 63		
140 x 110	35 067 1411 33	97.21
160 x 110	35 067 1611 33	132.74
160 x 140	35 067 1614 33	176.26
225 x 160	35 067 2216 33	429.94
250 x 160	35 067 2516 33	461.64
250 x 225	35 067 2522 33	494.09
315 x 160	35 067 3116 33	514.79
315 x 250	35 067 3125 33	603.44

PN16

Code	Price
35 067 2520 21	6.78
35 067 3220 21	9.01
35 067 3225 21	9.01
35 067 4020 21	11.35
35 067 4025 21	11.35
35 067 4032 21	12.09
35 067 5020 21	12.68
35 067 5025 21	13.28
35 067 5032 21	13.28
35 067 5040 21	13.28
35 067 6325 21	19.32
35 067 6332 21	19.32
35 067 6340 21	19.32
35 067 6350 21	19.32
35 067 7550 21	37.45
35 067 7563 21	37.45
35 067 9050 21	48.54
35 067 9063 21	48.54
35 067 9075 21	48.97
35 067 1163 21	58.56
35 067 1190 21	59.44
35 067 1463 21	97.21
35 067 1411 21	97.21
35 067 1611 21	132.74
35 067 1614 21	176.26
35 067 2216 21	429.94
35 067 2516 21	461.64
35 067 2522 21	494.09

PN10/PN16*

Size	Code	Price
90 x 63	35 067 9063 31	41.15
110 x 63	35 067 1163 31	49.26
160 x 110	35 067 1611 31	114.32

Code	Price

*Larger O.D. PN10, Smaller O.D. PN16

Concentric Reducer

Machined



PN10

Size	Code	Price
63 x 20		
75 x 20		
75 x 25		
75 x 32		
75 x 40		
90 x 20		
90 x 25		
90 x 32		
90 x 40		
110 x 20		
110 x 25		
110 x 32		
110 x 40		
110 x 50		
110 x 75		
125 x 63		
125 x 90	35 317 1290 33	247.05
125 x 110	35 317 1211 33	247.05
140 x 90	35 317 1490 33	289.82
140 x 125	35 317 1412 33	289.82
200 x 140	35 317 2014 33	575.94
200 x 160	35 317 2016 33	575.94
280 x 160	35 317 2816 33	943.92
280 x 225	35 317 2822 33	943.92

PN16

Code	Price
35 317 6320 21	111.79
35 317 7520 21	117.79
35 317 7525 21	117.69
35 317 7532 21	117.69
35 317 7540 21	117.69
35 317 9020 21	131.41
35 317 9025 21	131.41
35 317 9032 21	131.41
35 317 9040 21	131.41
35 317 1120 21	205.01
35 317 1125 21	205.01
35 317 1132 21	205.01
35 317 1140 21	205.01
35 317 1150 21	205.01
35 317 1175 21	205.01
35 317 1263 21	247.05
35 317 1290 21	247.05
35 317 1211 21	247.05
35 317 1490 21	289.82
35 317 1412 21	289.82
35 317 2014 21	575.94
35 317 2016 21	575.94
35 317 2816 21	943.92
35 317 2822 21	943.92

PURAD pvdf-uhp spigot fittings

Cap

Elongated



PN10

Size	Code	Price
20		
25		
32		
40		
50		
63		
75		
90	35 064 0090 33	37.32
110	35 064 0110 33	48.38

PN16

Code	Price
35 064 0020 21	7.97
35 064 0025 21	9.07
35 064 0032 21	10.25
35 064 0040 21	18.88
35 064 0050 21	23.00
35 064 0063 21	37.01
35 064 0075 21	45.60
35 064 0090 21	48.68
35 064 0110 21	69.91

Cap

Machined

PN10

Size	Code	Price
125	35 302 0125 33	145.53
140	35 302 0140 33	231.63
160	35 302 0160 33	266.74
200	35 302 0200 33	377.17
225	35 302 0225 33	441.80

PN16

Code	Price
35 302 0125 21	203.27
35 302 0140 21	247.98
35 302 0160 21	291.87
35 302 0200 21	416.19
35 302 0225 21	466.37

Cap

1/2" BSP or NPT female threaded



PN10

Size	Code	Price
20		
25		
32		
40		
50		
63		
75		
90	35 064 1090 33	on application
110	35 064 1110 33	on application
125	35 302 1125 33*	
140	35 302 1140 33*	
160	35 302 1160 33*	
180	35 302 1180 33*	
200	35 302 1200 33*	

PN16

Code	Price
35 064 1020 21	
35 064 1025 21	
35 064 1032 21	
35 064 1040 21	
35 064 1050 21	
35 064 1063 21	
35 064 1075 21	
35 064 1090 21	on application
35 064 1110 21	on application
35 302 1125 21*	
35 302 1140 21*	
35 302 1160 21*	
35 302 1180 21*	
35 302 1200 21*	

*Machined

AutoCad Software

AGRU CAD software is developed to run under AutoCad R12-DOS, R13-Windows, R14-Windows and Windows 2000
It is specifically produced to design plastic piping systems.

There are several unique features:-

- Drawing on centre lines (products centred automatically)
- Parts list generation
- Prefab parts list (pipe cutting lengths are shown)
- Automatic calculation of expansion loops

AGRU CAD contains the full AGRU range in PP, PVDF and ECTFE.



PURAD pvdf-uhp spigot adaptor fittings

Sanitary Joint Adaptor



PN16

Size	Code	Price
20	35 306 0020 21	58.38
25	35 306 0025 21	58.38
32	35 306 0032 21	58.38
40	35 306 0040 21	90.87
50	35 306 0050 21	90.87
63	35 306 0063 21	98.23

Note: Sanitary clamp not included

Sanitary Joint Gasket



FPM

Size	Code	Price
20	88 379 0020 21	
25	88 379 0025 21	
32	88 379 0032 21	on application
40	88 379 0040 21	
50	88 379 0050 21	
63	88 379 0063 21	

Sanitary Joint Twinclamp

Stainless Steel



Size	Code	Price
20/25/32	90 048 2032 21	
40/50	90 048 4050 21	on application
63	90 048 0063 21	

Machine Hire

Don't have the tools?
We have a dedicated fleet of welding equipment available to hire on a weekly basis.



PURAD pvdf-uhp spigot flanges

Stub Flange

DIN standard



Also available to JIS standards. Please enquire for details.

PN10

Size	Code	Price
20		
25		
32		
40		
50		
63		
75		
90	35 012 0090 33	57.37
110	35 012 0110 33	81.12
125	35 012 0125 33	121.82
140	35 012 0140 33	192.48
160	35 012 0160 33	250.00
180	35 012 0180 33	317.10
200	35 012 0200 33	422.55
225	35 012 0225 33	450.59
250	35 012 0250 33	540.53
280	35 012 0280 33	668.12
315	35 012 0315 33	803.80

PN16

Code	Price
35 012 0020 21	4.49
35 012 0025 21	5.24
35 012 0032 21	5.61
35 012 0040 21	9.07
35 012 0050 21	10.67
35 012 0063 21	15.64
35 012 0075 21	45.14
35 012 0090 21	61.06
35 012 0110 21	84.95
35 012 0140 21	261.05
35 012 0160 21	337.74
35 012 0180 21	431.42
35 012 0200 21	574.46
35 012 0225 21	612.81
35 012 0250 21	817.10
35 012 0280 21	1073.70

Stub Flange

ANSI standard



PN10

20		
25		
32		
40		
50		
63		
75		
90	35 012 1090 33	71.84
110	35 012 1110 33	101.48
125	35 012 1125 33	152.66
160	35 012 1160 33	312.67
200	35 012 1200 33	528.01
225	35 012 1225 33	562.68
250	35 012 1250 33	675.50
315	35 012 1315 33	1004.39

PN16

35 012 1020 21	5.67
35 012 1025 21	6.57
35 012 1032 21	7.01
35 012 1040 21	11.35
35 012 1050 21	13.35
35 012 1063 21	19.46
35 012 1075 21	56.32
35 012 1090 21	76.26
35 012 1110 21	106.19
35 012 1160 21	421.80
35 012 1200 21	717.54
35 012 1225 21	765.47
35 012 1250 21	1020.60

Stub Flange

Chamfered



For use with butterfly valve

90		
110		
140		
160		
180		
200		
225		
250		
280		

PN16

35 012 9090 21	76.26
35 012 9110 21	106.19
35 012 9140 21	326.68
35 012 9160 21	421.80
35 012 9180 21	539.07
35 012 9200 21	717.54
35 012 9225 21	765.47
35 012 9250 21	1020.60
35 012 9280 21	1342.13



Chamfered Stub Flange

The chamfered stub flange allows a wafer-style butterfly valve to fully open without restriction.

Blind Flange

Machined, DIN standard
Non Pressure



Also available drilled to
JIS standards.
Please enquire for
details.

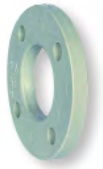
NP10

Size	Code	Price
20	35 334 0020 00	87.60
25	35 334 0025 00	92.93
32	35 334 0032 00	98.68
40	35 334 0040 00	127.87
50	35 334 0050 00	138.35
63	35 334 0063 00	154.14
75	35 334 0075 00	173.31
90	35 334 0090 00	215.33
110	35 334 0110 00	244.08
125	35 334 0125 00	244.08
140	35 334 0140 00	301.62
160	35 334 0160 00	359.14
180	35 334 0180 00	359.14
200	35 334 0200 00	492.61
225	35 334 0225 00	515.47

ANSI 150

Code	Price
35 334 1020 00	87.60
35 334 1025 00	92.93
35 334 1032 00	98.68
35 334 1040 00	127.87
35 334 1050 00	138.35
35 334 1063 00	154.14
35 334 1075 00	173.31
35 334 1090 00	210.91
35 334 1110 00	260.31
35 334 1125 00	216.08
35 334 1160 00	430.66
35 334 1200 00	592.89

Backing Ring



Polypropylene with steel
core.
Also available drilled to
JIS standards.
Please enquire for
details.

NP10

Size	Code	Price
20	11 014 0020 11	6.79
25	11 014 0025 11	7.46
32	11 014 0032 11	9.55
40	11 014 0040 11	12.11
50	11 014 0050 11	14.14
63	11 014 0063 11	16.40
75	11 014 0075 11	18.20
90	11 014 0090 11	21.50
110	11 014 0110 11	25.57
125	11 014 0125 11	25.57
140	11 014 0140 11	39.38
160	11 014 0160 11	45.09
180	11 014 0180 11	45.09
200	11 014 0200 11	64.20
225	11 014 0225 11	64.20
250	11 014 0250 11	102.52
280	11 014 0280 11	102.52
315	11 014 0315 11	128.83

ANSI 150

Code	Price
11 013 0020 11	6.79
11 013 0025 11	7.46
11 013 0032 11	9.55
11 013 0040 11	12.11
11 013 0050 11	14.14
11 013 0063 11	16.40
11 013 0075 11	18.20
11 013 0090 11	21.50
11 013 0110 11	25.57
11 013 0160 11	45.09
11 013 0200 11	64.20
11 013 0250 11	102.52
11 013 0315 11	128.83

Seal Clean Gasket

ePTFE



PN10

Size	Flange	Code	Price
20	DIN/ANSI	88 372 0020 21	6.65
25	DIN	88 372 0025 21	10.24
25	ANSI	88 372 1025 21	9.53
32	DIN	88 372 0032 21	14.25
32	ANSI	88 372 1032 21	12.52
40	DIN	88 372 0040 21	16.35
40	ANSI	88 372 1040 21	15.01
50	DIN	88 372 0050 21	19.59
50	ANSI	88 372 1050 21	18.38
63	DIN	88 372 0063 21	28.10
63	ANSI	88 372 1063 21	27.68
75	DIN	88 372 0075 21	39.89
75	ANSI	88 372 1075 21	38.27
90	DIN	88 372 0090 21	46.53
90	ANSI	88 372 1090 21	44.62
110	DIN/ANSI	88 372 0110 21	63.47
125	DIN/ANSI	88 372 0125 21	53.24
140	DIN	88 372 0140 21	86.66
160	DIN/ANSI	88 372 0160 21	113.52
180	DIN	88 372 0180 21	98.98
200	DIN/ANSI	88 372 0200 21	172.99
225	DIN/ANSI	88 372 0225 21	152.49
250	DIN/ANSI	88 372 0250 21	232.81
280	DIN	88 372 0280 21	203.44
315	DIN/ANSI	-	-

PN16

Code	Price
-	-
-	-
-	-
-	-
-	-
-	-
-	-
-	-
-	-
-	-
-	-
88 372 0090 33	44.66
88 372 1090 33	42.80
88 372 0110 33	60.74
88 372 0125 33	48.00
88 372 0140 33	82.18
88 372 0160 33	111.50
88 372 0180 33	96.31
88 372 0200 33	167.16
88 372 0225 33	147.75
88 372 0250 33	221.06
88 372 0280 33	196.61
88 372 0315 33	241.15