

Agru Diaphragm Valve

Description: In-line diaphragm valve with position indicator

Mounting: In any position

Maximum Fluid Pressure at 20°C: 10 bar

Fluid Temperature Range: 0°C - 120°C

Construction:

Body: PVDF-HP

Diaphragm: PTFE (EPDM Backed) or EPDM

End Connections: Fusion spigots, flanged BS4504 EN1072 PN10



Fusion Spigots

PTFE Diaphragm
(EPDM Backed)

Size	Code	Price
20	35 342 1020 21	191.73
25	35 342 1025 21	204.29
32	35 342 1032 21	226.40
40	35 342 1040 21	322.28
50	35 342 1050 21	387.89
63	35 342 1063 21	491.15
75	35 342 1075 21	1358.34
90	35 342 1090 21	1609.08
110	35 342 1011 21	1942.40

Fusion Spigots - Union

PTFE Diaphragm

Size	Code	Price
20	35 340 0020 21	230.06
25	35 340 0025 21	255.17
32	35 340 0032 21	295.73
40	35 340 0040 21	398.22
50	35 340 0050 21	481.55
63	35 340 0063 21	638.63

Flanged BS4504 PN10

PTFE Diaphragm

Size	Code	Price
20	35 242 1020 21	230.06
25	35 242 1025 21	255.17
32	35 242 1032 21	295.73
40	35 342 2040 21	398.22
50	35 342 2050 21	481.55
63	35 342 2063 21	638.63
75	35 242 1075 21	1358.34
90	35 342 2090 21	1803.77
110	35 342 2011 21	2411.41
140	35 342 2014 21	3123.77

Diaphragm Valve Mounting Plate

- Ensures clearance of union nut from mounting surface
- Complete with two fixing screws

valve size	thickness (mm)	code	price
20	16.0	14 0103	5.51
25	23.0	14 0102	5.51
32	23.0	14 0102	5.51
40	18.5	14 0123	8.96
50	23.5	14 0109	8.96
63	23.5	14 0109	8.96

Also suitable for use with T-Diaphragm valve.





Agru Ball Valve

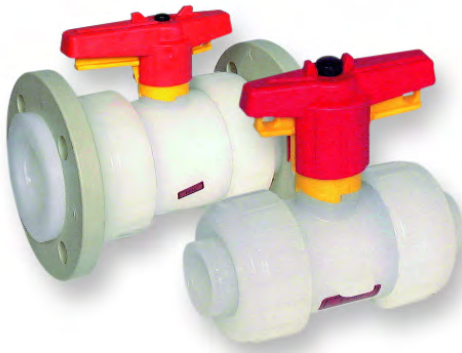
Description: In-line double union ball valve with lockable handle
Mounting: In any position
Maximum Fluid Pressure at 20°C: Sizes 16mm to 75mm - 16 bar;
 Sizes 90mm to 110mm - 10 bar
Fluid Temperature Range: 0°C - 120°C
Construction:
Body: PVDF-HP
Seals: FPM
Seats: PTFE
End Connections: Fusion spigots, flanged BS4504 PN10

Fusion Spigots

	Size	Code	Price
FPM Seals	20	35 335 1520 21	109.73
PTFE Seals	25	35 335 1525 21	141.59
	32	35 335 1532 21	181.42
	40	35 335 1540 21	239.68
	50	35 335 1550 21	339.96
	63	35 335 1563 21	470.48
	75	35 335 1575 21	808.24
	90	35 335 1590 33	1069.28

Flanged BS4504 PN10/16

	Size	Code	Price
FPM Seals	20	35 335 1720 21	
PTFE Seals	25	35 335 1725 21	
	32	35 335 1732 21	
	40	35 335 1740 21	on application
	50	35 335 1750 21	
	63	35 335 1763 21	
	75	35 335 1775 21	
	90	35 335 1790 33	



Agru Laboratory/Sampling Ball Valve

Description: In-line ball valve for laboratory or sampling use
Mounting: In any position
Maximum Fluid Pressure at 20°C: 10 bar
Fluid Temperature Range: 0°C - 120°C
Construction:
Body: PVDF-HP
Seals: FPM
Seats: PTFE
End Connections: 1/4" R or NPT Threaded; Hose Connection included



Connections	Size	Code	Price
R Male x Female	1/4"	35 337 0000 11	19.76
NPT Male x Female	1/4"	35 337 1000 11	19.76

Agru T-Diaphragm Valve

Description: Diaphragm valve on T branch with position indicator

Mounting: In any position (usually horizontal on the run)

Maximum Fluid Pressure at 20°C: 10 bar

Fluid Temperature Range: 0°C - 120°C

Construction:

Body: PVDF-HP

Diaphragm: PTFE (EPDM backed)

End Connections: Fusion Spigots



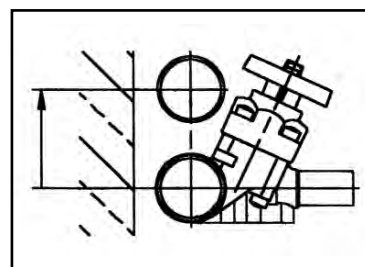
Fusion Spigots

PTFE Diaphragm
(EPDM Backed)

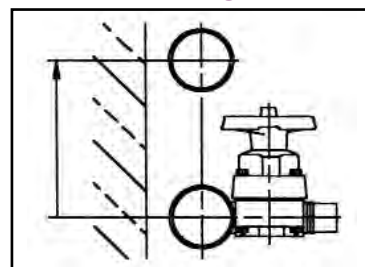
Size	Code	Price
20/20	35 343 2020 21	306.05
25/20	35 343 2520 21	306.05
25/25	35 343 2525 21	306.05
32/20	35 343 3220 21	366.51
32/25	35 343 3225 21	366.51
32/32	35 343 3232 21	366.51
40/20	35 343 4020 21	425.51
40/25	35 343 4025 21	425.51
40/32	35 343 4032 21	425.51
50/20	35 343 5020 21	451.31
50/25	35 343 5025 21	451.31
50/32	35 343 5032 21	451.31
63/20	35 343 6320 21	490.41
63/25	35 343 6325 21	490.41
63/32	35 343 6332 21	490.41
63/40	35 343 6340 21	806.75
63/50	35 343 6350 21	806.75
63/63	35 343 6363 21	806.75
75/25	35 343 7525 21	780.20
75/32	35 343 7532 21	780.20
75/40	35 343 7540 21	976.36
75/50	35 343 7550 21	976.36
75/63	35 343 7563 21	976.36
90/25	35 343 9025 21	1044.21
90/25	35 343 9025 31*	927.69
90/32	35 343 9032 21	1044.21
90/32	35 343 9032 31*	927.69
90/40	35 343 9040 21	1274.30
90/40	35 343 9040 31*	1209.39
90/50	35 343 9050 21	1274.30
90/50	35 343 9050 31*	1209.39
90/63	35 343 9063 21	1274.30
90/63	35 343 9063 31*	1209.39
110/25	35 343 1125 21	1166.63
110/25	35 343 1125 31*	1107.64
110/32	35 343 1132 21	1166.63
110/32	35 343 1132 31*	1107.64
110/50	35 343 1150 21	1402.60
110/50	35 343 1150 31*	1333.28
110/63	35 343 1163 21	1659.23
110/63	35 343 1163 31*	1333.28

The wall thickness of the spigot is in accordance with PN16 except for * which has PN10 on the run and PN16 on the branch.

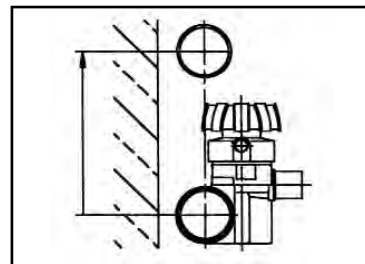
AGRU T-DIAPHRAGM VALVE



Conventional Design



Conventional Design



Also available with rinsing branch.
Enquire for details.

Agru Check (Non-Return) Valve

Description: In-line spring weighted cone check valve
Mounting: In any position
Maximum Fluid Pressure at 20°C: Sizes 16mm to 75mm - 16 bar;
 Size 90mm - 10 bar
Fluid Temperature Range: 0°C - 120°C
Construction:
Body: PVDF-HP
Seals: FPM
Spring: Stainless Steel sleeved in PTFE
End Connections: Fusion spigots



Fusion Spigots

PTFE Seals	Size	Code	Price
	20	35 336 1520 21	168.88
	25	35 336 1525 21	213.14
	32	35 336 1532 21	250.00
	40	35 336 1540 21	365.77
	50	35 336 1550 21	470.48
	63	35 336 1563 21	632.01
	75	35 336 1575 21	917.36
	90	35 336 1590 33	1206.45

Agru Wafer Check Valve

Description: Wafer style flap check valve
Mounting: In any position, between flanges to BS4504
 EN1072 PN10. Optional spring return for mounting in
 horizontal position or for pulsating flow.
Maximum Fluid Pressure at 20°C: 10 bar
Fluid Temperature Range: 0°C - 120°C
Construction:
Body: PVDF-HP
Seals: FPM
Spring (optional): Stainless Steel, PTFE coated
End Connections: Flange mounted (flanges not included)



No Spring Return

FPM Seals	Size	Code	Price
	40	35 339 3040 33	277.29
	50	35 339 3050 33	283.17
	63	35 339 3063 33	306.05
	75	35 339 3075 33	353.22
	90	35 339 3090 33	424.76
	110	35 339 3110 33	584.79
	125	35 339 3125 33	800.86
	140	35 339 3140 33	800.86
	160	35 339 3160 33	1112.05
	180	35 339 3180 33	1112.05
	225	35 339 3225 33	2651.82
	280	35 339 3280 33	2974.80

Stainless Steel Spring Return

FPM Seals	Size	Code	Price
	40	35 339 1040 33	384.93
	50	35 339 1050 33	390.11
	63	35 339 1063 33	417.38
	75	35 339 1075 33	471.23
	90	35 339 1090 33	555.29
	110	35 339 1110 33	721.96
	125	35 339 1125 33	980.80
	140	35 339 1140 33	980.80
	160	35 339 1160 33	1293.45
	180	35 339 1180 33	1293.45
	225	35 339 1225 33	2716.70
	280	35 339 1280 33	3072.17