

Pipe PPs-el

Ventilation				PN3.2/S-16/SDR33		PN6/S-8.3/SDR17		PN10/S-5/SDR11	
Size	Wall	Code	Price/m	Code	Price/m	Code	Price/m	Code	Price/m
32		-	-	-	-	-	-	19 705 0032 11	15.19
50		-	-	-	-	-	-	19 705 0050 11	39.12
63		-	-	-	-	-	-	19 705 0063 11	61.88
75		-	-	-	-	-	-	19 705 0075 11	86.31
90		-	-	19 705 0090 33	46.53	-	-	19 705 0090 11	124.76
110	3.0	19 705 0110 00	70.93	19 705 0110 33	70.83	19 705 0110 17	121.79	19 705 0110 11	167.98
160	3.0	19 705 0160 00	104.07	19 705 0160 33	145.18	19 705 0160 17	255.98	-	-
180	3.0	19 705 0180 00	117.25	-	-	-	-	-	-
200	3.0	19 705 0200 00	130.39	19 705 0200 33	225.53	19 705 0200 17	397.58	-	-
225	3.5	19 705 0225 00	165.32	19 705 0225 33	279.43	-	-	-	-
250	3.5	19 705 0250 00	197.91	-	-	-	-	-	-
315	5.0	19 705 0315 00	332.42	-	-	-	-	-	-
355	5.0	19 705 0355 00	375.20	-	-	-	-	-	-
400	6.0	19 705 0400 00	423.72	-	-	-	-	-	-

Standard length 5m

Please note that a transportation surcharge may be applied on pipe diameters 250mm or larger - please enquire for details



Tee 90°



PN3.2

Size	Code	Price
32	-	-
50	-	-
63	-	-
75	-	-
90	-	-
110	19 006 0110 33	54.45
160	19 006 0160 33	124.01
200	19 006 0200 33	181.60
225	19 006 0225 33	340.12
250	19 006 0250 33	526.22
315	19 006 0315 33	845.13

PN6

Code	Price
-	-
-	-
-	-
-	-
-	-
19 006 0110 17	81.84
19 006 0160 17	251.75
19 006 0200 17	422.31
-	-
-	-
-	-
-	-

PN10

Code	Price
19 006 0032 11	6.54
19 006 0050 11	14.01
19 006 0063 11	21.76
19 006 0075 11	43.94
19 006 0090 11	65.55
19 006 0110 11	97.03
-	-
-	-
-	-
-	-
-	-

# pp flame retardent - electrically conductive

## Bend 90°



PN3.2			PN6		PN10	
Size	Code	Price	Code	Price	Code	Price
32	-	-	-	-	19 001 0032 11	7.06
50	-	-	-	-	19 001 0050 11	11.43
63	-	-	-	-	19 001 0063 11	16.38
75	-	-	-	-	19 001 0075 11	22.60
90	-	-	-	-	19 001 0090 11	32.70
110	19 001 0110 33	41.61	19 001 0110 17	60.75	19 001 0110 11	62.86
160	19 001 0160 33	79.06	19 001 0160 17	123.66	-	-
200	19 001 0200 33	119.57	19 001 0200 17	187.69	-	-
225	19 001 0225 33	147.10	-	-	-	-
250	19 001 0250 33	180.79	-	-	-	-
315	19 001 0315 33	317.36	-	-	-	-

## Reducer

Concentric



PN3.2			PN6		PN10	
Size	Code	Price	Code	Price	Code	Price
63x16	-	-	-	-	19 007 6316 11	12.42
75x32	-	-	-	-	19 007 7532 11	19.81
110x63	-	-	-	-	19 007 1163 11	26.25
160x110	19 007 1611 33	85.63	19 007 1611 17	87.13	-	-
225x160	19 007 2216 33	216.75	19 007 2216 17	243.35	-	-
315x225	19 007 3122 33	249.92	-	-	-	-

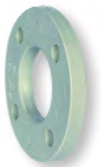
## Stub Flange



PN3.2			PN6		PN10	
Size	Code	Price	Code	Price	Code	Price
32	-	-	-	-	19 012 0032 11	6.93
50	-	-	-	-	19 012 0050 11	10.19
63	-	-	-	-	19 012 0063 11	12.72
75	-	-	-	-	19 012 0075 11	15.08
90	-	-	-	-	19 012 0090 11	21.61
110	19 012 0110 33	25.52	19 012 0110 17	25.22	19 012 0110 11	28.01
160	19 012 0160 33	44.43	19 012 0160 17	44.43	-	-
200	19 012 0200 33	77.98	19 012 0200 17	81.10	-	-
225	19 012 0225 33	87.47	-	-	-	-
250	19 012 0250 33	123.32	-	-	-	-
315	19 012 0315 33	159.31	-	-	-	-

## Backing Ring

BS 4504 EN1072 NP10



PPs-el		
Size	Code	Price
32	19 014 0032 11	20.01
50	19 014 0050 11	29.55
63	19 014 0063 11	34.10
75	19 014 0075 11	37.82
90	19 014 0090 11	45.01
110	19 014 0110 11	71.82
140	-	-
160	19 014 0160 11	104.61
200	-	-
225	-	-
250	-	-
315	-	-



### Gaskets

Refer to page 269 for backing rings and gaskets