

Tee 90°



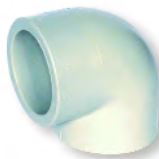
| Size | Code | Price |
|------|----------------|-------|
| 16 | 11 056 0016 07 | 2.54 |
| 20 | 11 056 0020 07 | 2.75 |
| 25 | 11 056 0025 07 | 3.14 |
| 32 | 11 056 0032 07 | 3.64 |
| 40 | 11 056 0040 07 | 4.55 |
| 50 | 11 056 0050 07 | 7.60 |
| 63 | 11 056 0063 07 | 10.96 |
| 75 | 11 056 0075 07 | 27.11 |
| 90 | 11 056 0090 07 | 40.36 |
| 110 | 11 056 0110 07 | 50.19 |

Reducing Tee 90°



| | | |
|-------|----------------|-------|
| 25/20 | 11 055 2520 07 | 4.24 |
| 32/20 | 11 055 3220 07 | 5.21 |
| 32/25 | 11 055 3225 07 | 5.21 |
| 40/20 | 11 055 4020 07 | 5.90 |
| 40/25 | 11 055 4025 07 | 5.90 |
| 40/32 | 11 055 4032 07 | 5.90 |
| 50/20 | 11 055 5020 07 | 9.52 |
| 50/25 | 11 055 5025 07 | 9.52 |
| 50/32 | 11 055 5032 07 | 9.52 |
| 50/40 | 11 055 5040 07 | 9.52 |
| 63/25 | 11 055 6325 07 | 13.92 |
| 63/32 | 11 055 6332 07 | 13.92 |
| 63/40 | 11 055 6340 07 | 13.92 |
| 63/50 | 11 055 6350 07 | 13.92 |

Elbow 90°



| | | |
|-----|----------------|-------|
| 16 | 11 051 0016 07 | 2.31 |
| 20 | 11 051 0020 07 | 2.38 |
| 25 | 11 051 0025 07 | 2.91 |
| 32 | 11 051 0032 07 | 3.51 |
| 40 | 11 051 0040 07 | 4.41 |
| 50 | 11 051 0050 07 | 8.12 |
| 63 | 11 051 0063 07 | 10.57 |
| 75 | 11 051 0075 07 | 22.34 |
| 90 | 11 051 0090 07 | 28.15 |
| 110 | 11 051 0110 07 | 40.81 |

Elbow 45°



| | | |
|-----|----------------|-------|
| 16 | 11 050 0016 07 | 2.75 |
| 20 | 11 050 0020 07 | 3.06 |
| 25 | 11 050 0025 07 | 3.64 |
| 32 | 11 050 0032 07 | 4.18 |
| 40 | 11 050 0040 07 | 5.37 |
| 50 | 11 050 0050 07 | 7.37 |
| 63 | 11 050 0063 07 | 9.46 |
| 75 | 11 050 0075 07 | 20.85 |
| 90 | 11 050 0090 07 | 26.07 |
| 110 | 11 050 0110 07 | 41.70 |

Socket



| | | |
|-----|----------------|-------|
| 16 | 11 053 0016 07 | 1.65 |
| 20 | 11 053 0020 07 | 1.56 |
| 25 | 11 053 0025 07 | 1.65 |
| 32 | 11 053 0032 07 | 2.16 |
| 40 | 11 053 0040 07 | 2.75 |
| 50 | 11 053 0050 07 | 4.82 |
| 63 | 11 053 0063 07 | 7.53 |
| 75 | 11 053 0075 07 | 12.28 |
| 90 | 11 053 0090 07 | 15.49 |
| 110 | 11 053 0110 07 | 24.13 |



Reducer

Spigot x Socket

| Size | Code | Price |
|--------|----------------|-------|
| 25x16 | 11 057 2516 07 | 2.25 |
| 25/20 | 11 057 2520 07 | 2.54 |
| 32/20 | 11 057 3220 07 | 3.14 |
| 32/25 | 11 057 3225 07 | 3.14 |
| 40/20 | 11 057 4020 07 | 3.73 |
| 40/25 | 11 057 4025 07 | 3.73 |
| 40/32 | 11 057 4032 07 | 3.73 |
| 50/20 | 11 057 5020 07 | 4.32 |
| 50/25 | 11 057 5025 07 | 4.32 |
| 50/32 | 11 057 5032 07 | 4.32 |
| 50/40 | 11 057 5040 07 | 4.32 |
| 63/25 | 11 057 6325 07 | 5.96 |
| 63/32 | 11 057 6332 07 | 5.96 |
| 63/40 | 11 057 6340 07 | 5.96 |
| 63/50 | 11 057 6350 07 | 5.96 |
| 75/63 | 11 057 7563 07 | 10.43 |
| 90/63 | 11 057 9063 07 | 14.52 |
| 90/75 | 11 057 9075 07 | 14.52 |
| 110/63 | 11 057 1163 07 | 19.82 |
| 110/90 | 11 057 1190 07 | 19.82 |

Female Adaptor

BSP or NPT threaded

| | | |
|------------|----------------|-------|
| 20 x 1/2 | 11 034 2020 07 | 7.53 |
| 25 x 3/4 | 11 034 2525 07 | 8.50 |
| 32 x 1 | 11 034 3232 07 | 11.09 |
| 40 x 1 1/4 | 11 034 4040 07 | 12.67 |
| 50 x 1 1/2 | 11 034 5050 07 | 19.96 |
| 63 x 2 | 11 034 6363 07 | 25.02 |

Code shown is for BSP.
Code for NPT on request.

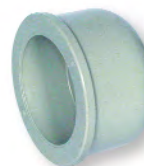
Male Adaptor

BSP or NPT threaded

| | | |
|------------|----------------|-------|
| 20 x 3/4 | 11 035 2025 07 | 7.09 |
| 25 x 1 | 11 035 2532 07 | 8.86 |
| 32 x 1 1/4 | 11 035 3240 07 | 10.66 |
| 40 x 1 1/2 | 11 035 4050 07 | 17.58 |
| 50 x 2 | 11 035 5063 07 | 22.19 |

Code shown is for BSP
Code for NPT on request

Cap



| | | |
|-----|----------------|-------|
| 16 | 11 054 0016 07 | 2.25 |
| 20 | 11 054 0020 07 | 2.61 |
| 25 | 11 054 0025 07 | 2.75 |
| 32 | 11 054 0032 07 | 3.06 |
| 40 | 11 054 0040 07 | 3.95 |
| 50 | 11 054 0050 07 | 5.07 |
| 63 | 11 054 0063 07 | 7.00 |
| 75 | 11 054 0075 07 | 11.32 |
| 90 | 11 054 0090 07 | 15.64 |
| 110 | 11 054 0110 07 | 20.85 |

Union

FPM O-Rings

| | | |
|----|----------------|-------|
| 20 | 11 024 1120 07 | 10.06 |
| 25 | 11 024 1125 07 | 10.96 |
| 32 | 11 024 1132 07 | 13.10 |
| 40 | 11 024 1140 07 | 18.64 |
| 50 | 11 024 1150 07 | 26.22 |
| 63 | 11 024 1163 07 | 35.74 |



Pressure Ratings

Maximum working pressures (socket fusion):
All sizes PN10

Stub Flange

DIN or ANSI standards

| | | |
|-----|----------------|-------|
| 20 | 11 052 0020 07 | 1.95 |
| 25 | 11 052 0025 07 | 2.09 |
| 32 | 11 052 0032 07 | 2.31 |
| 40 | 11 052 0040 07 | 2.85 |
| 50 | 11 052 0050 07 | 3.35 |
| 63 | 11 052 0063 07 | 4.41 |
| 75 | 11 052 0075 07 | 9.68 |
| 90 | 11 052 0090 07 | 13.64 |
| 110 | 11 052 0110 07 | 19.23 |

Code shown is for DIN.
ANSI code on request.

Blind Flange

Polypropylene with steel core drilled to BS4504 NP10/16 - black

| | | |
|-----|----------------|--------|
| 20 | 14 045 0020 11 | 47.66 |
| 25 | 14 045 0025 11 | 48.41 |
| 32 | 14 045 0032 11 | 49.61 |
| 40 | 14 045 0040 11 | 53.18 |
| 50 | 14 045 0050 11 | 62.31 |
| 63 | 14 045 0063 11 | 65.53 |
| 75 | 14 045 0075 11 | 76.69 |
| 90 | 14 045 0090 11 | 85.41 |
| 110 | 14 045 0110 11 | 115.26 |

Blind Flange

Polypropylene with steel core drilled to ANSI 150 - grey

| | | |
|-----|----------------|--------|
| 20 | 11 043 0020 11 | 59.57 |
| 25 | 11 043 0025 11 | 60.46 |
| 32 | 11 043 0032 11 | 61.94 |
| 40 | 11 043 0040 11 | 66.43 |
| 50 | 11 043 0050 11 | 75.21 |
| 63 | 11 043 0063 11 | 81.91 |
| 75 | 11 043 0075 11 | 93.53 |
| 90 | 11 043 0090 11 | 105.43 |
| 110 | 11 043 0110 11 | 144.16 |

Gasket

EPDM

| | | |
|-----|-----------|------|
| 20 | 861-_-005 | 0.50 |
| 25 | 861-_-007 | 0.58 |
| 32 | 861-_-010 | 0.64 |
| 40 | 861-_-012 | 0.80 |
| 50 | 861-_-015 | 0.96 |
| 63 | 861-_-020 | 1.65 |
| 75 | 861-_-025 | 2.02 |
| 90 | 861-_-030 | 2.17 |
| 110 | 861-_-040 | 3.16 |

Complete code when ordering
Insert 'ISO' for NP10/16; 'A' for ANSI 150; 'E' for Table D/E

Gasket

FPM

| | | |
|-----|-----------|-------|
| 20 | 862-_-005 | 2.34 |
| 25 | 862-_-007 | 3.48 |
| 32 | 862-_-010 | 4.59 |
| 40 | 862-_-012 | 7.36 |
| 50 | 862-_-015 | 8.05 |
| 63 | 862-_-020 | 10.60 |
| 75 | 862-_-025 | 15.34 |
| 90 | 862-_-030 | 20.01 |
| 110 | 862-_-040 | 34.14 |

Complete code when ordering
Insert 'ISO' for NP10/16; 'A' for ANSI 150; 'E' for Table D/E

Backing Ring Table D/E

Galvanised mild steel

| | | |
|-------|-------------|-------|
| 20 | 860-005-11E | 5.71 |
| 25 | 860-007-11E | 6.47 |
| 32 | 860-010-11E | 6.79 |
| 40 | 860-012-11E | 7.00 |
| 50 | 860-015-11E | 8.59 |
| 63 | 860-020-11E | 12.18 |
| 75 | 860-025-11E | 18.20 |
| 90 | 860-030-11E | 18.50 |
| 110 D | 860-040-11D | 23.91 |
| 110 E | 860-040-11E | 23.91 |

Backing Ring NP10/16

Galvanised mild steel

| | | |
|-----|--------------|-------|
| 20 | 860-005-11NP | 6.47 |
| 25 | 860-007-11NP | 6.85 |
| 32 | 860-010-11NP | 8.13 |
| 40 | 860-012-11NP | 8.64 |
| 50 | 860-015-11NP | 9.48 |
| 63 | 860-020-11NP | 13.39 |
| 75 | 860-025-11NP | 18.33 |
| 90 | 860-030-11NP | 21.20 |
| 110 | 860-040-11NP | 27.11 |

Backing Ring ASA 150

Galvanised mild steel

| | | |
|-----|-------------|-------|
| 20 | 860-005-11A | 6.47 |
| 25 | 860-007-11A | 6.85 |
| 32 | 860-010-11A | 8.13 |
| 40 | 860-012-11A | 8.64 |
| 50 | 860-015-11A | 9.48 |
| 63 | 860-020-11A | 13.39 |
| 75 | 860-025-11A | 18.33 |
| 90 | 860-030-11A | 21.20 |
| 110 | 860-040-11A | 27.11 |

Backing Ring NP10

Polypropylene with steel core

| | | |
|-----|----------------|-------|
| 20 | 11 014 0020 11 | 6.86 |
| 25 | 11 014 0025 11 | 7.53 |
| 32 | 11 014 0032 11 | 9.64 |
| 40 | 11 014 0040 11 | 12.22 |
| 50 | 11 014 0050 11 | 14.27 |
| 63 | 11 014 0063 11 | 17.62 |
| 75 | 11 014 0075 11 | 18.34 |
| 90 | 11 014 0090 11 | 21.70 |
| 110 | 11 014 0110 11 | 25.80 |

Backing Ring ASA 150

Polypropylene with steel core

| | | |
|-----|----------------|-------|
| 20 | 11 013 0020 11 | 6.86 |
| 25 | 11 013 0025 11 | 7.53 |
| 32 | 11 013 0032 11 | 9.64 |
| 40 | 11 013 0040 11 | 12.22 |
| 50 | 11 013 0050 11 | 14.27 |
| 63 | 11 013 0063 11 | 17.62 |
| 75 | 11 013 0075 11 | 18.34 |
| 90 | 11 013 0090 11 | 21.70 |
| 110 | 11 013 0110 11 | 25.80 |