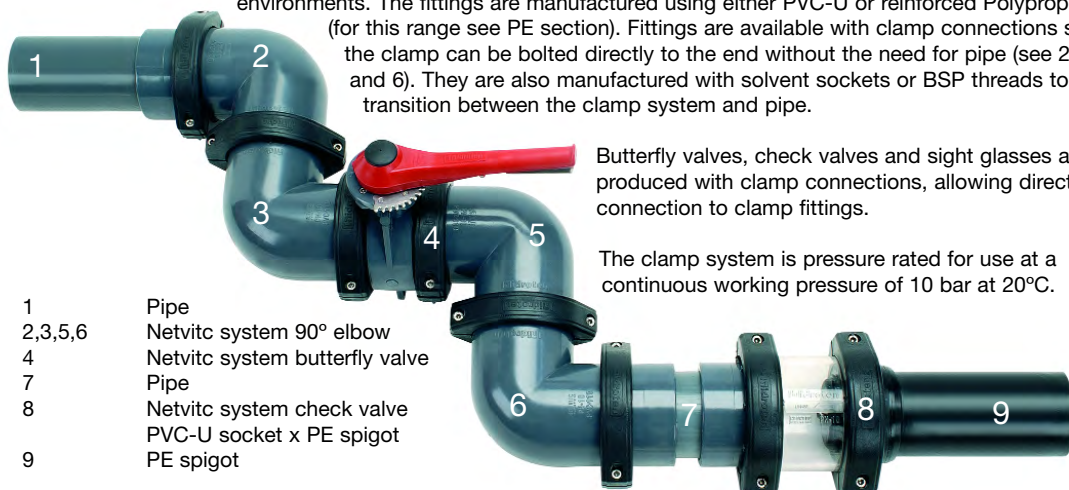


## Netvitic® clamp system

Netvitic is a unique system that is quick and easy to install using bolted clamp couplings. Similarly, the clamp couplings can easily be demounted so that piping can be repositioned or reused.

The clamp is manufactured from a tough, lightweight reinforced polypropylene and will withstand harsh, corrosive environments. The fittings are manufactured using either PVC-U or reinforced Polypropylene (for this range see PE section). Fittings are available with clamp connections so that the clamp can be bolted directly to the end without the need for pipe (see 2, 3, 5 and 6). They are also manufactured with solvent sockets or BSP threads to enable transition between the clamp system and pipe.



- 1 Pipe
- 2,3,5,6 Netvitic system 90° elbow
- 4 Netvitic system butterfly valve
- 7 Pipe
- 8 Netvitic system check valve
- PVC-U socket x PE spigot
- 9 PE spigot

Butterfly valves, check valves and sight glasses are produced with clamp connections, allowing direct connection to clamp fittings.

The clamp system is pressure rated for use at a continuous working pressure of 10 bar at 20°C.



### Tee 90°

Without clamps

Size	Code	Price
90	1N047	25.40
110	1N048	39.63
125	1N049	61.60
● 160	1N051	107.49
● 200	1N052	154.55

● Available soon



### Elbow 90°

Without clamps

Size	Code	Price
90	1N007	16.37
110	1N008	30.94
125	1N009	42.75
● 160	1N011	84.49
● 200	1N012	128.56

● Available soon



### Tee 90°

With clamps - solvent sockets

Size	Code	Price
90	1N057	104.62
110	1N058	129.08
125	1N059	162.77
● 160	1N061	299.03
● 200	1N062	428.35

● Available soon



### Elbow 90°

With clamps - solvent sockets

Size	Code	Price
90	1N017	69.10
110	1N018	90.61
125	1N019	115.66
● 160	1N021	213.05
● 200	1N022	313.03

● Available soon



### Adaptor Tee 90°

Without clamps - BSP female branch

Size	Code	Price
90-2"	1N477	25.67
110-1"	1N478	37.21
110-1 1/4"	1N479	37.21
110-1 1/2"	1N480	37.21
110-2"	1N481	37.39



### Bend 90°

Without clamps

Size	Code	Price
● 90	1N147	65.99
● 110	1N148	117.49

● Available soon



### Adaptor Tee 90°

Without clamps - solvent socket branch

Size	Code	Price
90-63	1N457	24.39
110-32	1N458	35.92
110-40	1N459	35.92
110-50	1N460	35.92
110-63	1N461	35.92



### Bend 90°

With clamps - solvent sockets

Size	Code	Price
● 90	1N157	126.92
● 110	1N158	219.90

● Available soon



### Cross 90°

Without clamps

Size	Code	Price
90	1N167	64.02
110	1N168	99.89
125	1N169	118.85
● 160	1N171	175.75
● 200	1N172	260.36

● Available soon

# Netvitc clamp system mm sizes



## Air Release Elbow 90° NEW

Without clamps

Size	Code	Price
90	1N117	20.27
110	1N119	36.64
125	1N121	47.51
• 160	1N123	94.79
• 200	1N124	136.68

• Available soon



## Coupling NEW

Without clamps

Size	Code	Price
90	1N067	11.38
110	1N068	18.94



## Air Release Elbow 90° NEW

With clamps - solvent sockets

Size	Code	Price
90	1N107	73.11
110	1N109	96.36
125	1N111	120.39
• 160	1N113	223.64
• 200	1N114	321.57

• Available soon



## Coupling NEW

With clamps - solvent sockets

Size	Code	Price
90	1N077	64.15
110	1N078	78.50



## Air Release Bend 90° NEW

Without clamps

Size	Code	Price
• 90-1"	1N177	76.13
• 110-1"	1N178	127.62

• Available soon



## Concentric Reducer NEW

Without clamps

Size	Code	Price
• 110-90	1N197	13.25
• 125-90	1N198	21.12
• 125-110	1N199	21.94

• Available soon



## Air Release Bend 90° NEW

With clamps - solvent sockets

Size	Code	Price
• 90-1"	1N187	137.07
• 110-1"	1N188	230.03

• Available soon



## Cap NEW

Without clamp

Size	Code	Price
90	1N087	12.66
110	1N088	26.47
125	1N089	33.99
140	1N090	47.32
160	1N091	53.85
200	1N092	68.14



## Elbow 45° NEW

Without clamps

Size	Code	Price
90	1N027	17.06
110	1N028	31.43



## Cap NEW

With clamp - solvent socket

Size	Code	Price
90	1N097	39.11
110	1N098	56.40
125	1N099	67.21
140	1N100	99.65
160	1N101	121.19
200	1N102	187.62
225	1N103	187.62



## Elbow 45° NEW

With clamps - solvent sockets

Size	Code	Price
90	1N037	69.88
110	1N038	91.11



## Flange NEW

Without clamp - PN10/16

Size	Code	Price
90	1N137	23.46
110	1N138	29.70
125	1N139	33.98
• 160	1N141	55.05

• Available soon

# Netvitc clamp system mm sizes



## Union

NEW

With clamps - mm solvent socket

Size	Code	Price
40	10371	18.93
50	10372	22.93
63	10373	29.85
75	10374	36.94
90	10327	47.89
110	10328	56.92
125	10329	73.54
140	10330	97.36
160	10331	117.65
200	10332	201.36
225	10375	203.23



## Butterfly Valve

With clamps - mm solvent socket

Size	Code	Price
63	19N020	141.69
75	19N021	141.69
90	19N022	192.23
110	19N023	219.02
125	19N024	261.89
140	19N025	286.41
160	19N026	379.83
200	19N027	514.93
225	19N028	514.93



## Union

NEW

PE spigot x PVC-U solvent socket

Size	Code	Price
50	10354	31.69
63	10355	44.89
75	10356	65.80
90	10357	83.84
110	10358	111.59
125	10359	127.17
140	10360	150.92
160	10361	160.65
200	10362	251.24
225	10363	251.24



## Check Valve

With clamps - mm solvent socket

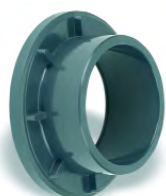
Size	Code	Price
90	15020	215.00
110	15021	235.85
125	15022	496.57
140	15023	523.17
160	15024	579.04



## Sight Glass

With clamps - mm solvent socket

Size	Code	Price
40	18004	55.89
50	18005	55.89
63	18006	67.49
75	18007	82.89
90	18008	88.61
110	18009	100.76
125	18010	115.99
140	18011	148.09
160	18012	225.22
200	18013	331.89



## Union End

NEW

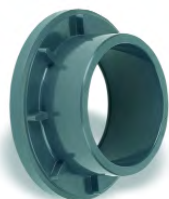
Solvent socket

Size	Code	Price
63	1N977	4.88
75	1N980	6.72
90	1N981	10.24
110	1N983	12.78
125	1N986	17.17
140	1N988	22.36
160	1N990	31.09
200	1N992	57.22



## Valves

Please refer to the PVC-U valve section for details on the full range of clamp union valves.



## Reducing Union End

NEW

Solvent socket

Size	Code	Price
63x40	1N975	4.88
63x50	1N976	4.88
63x75	1N979	4.88
75x63	1N978	6.72
125x90	1N982	17.17
125x110	1N984	17.17
160x110	1N985	31.09
160x125	1N987	31.09
160x140	1N989	31.09
160x200	1N991	57.22
200x225	1N993	57.22



## Clamp

NEW

Size	Code	Price
63	1N910	5.16
75	1N911	6.16
90	1N912	15.83
110	1N913	16.61
125	1N914	18.72
140	1N915	22.65
160	1N916	30.39
200	1N917	30.95



## O-Ring

NEW

Size	Code	Price
63	98355	3.34
75	98356	3.34
90	98352	3.50
90*	98387	22.93
110	98353	3.53
110*	98388	24.55
125	98350	6.75
125*	98389	31.25
140	98354	7.08
140*	98390	32.32
160	98351	9.75
160*	98391	34.13
200	98357	34.48

\* Inner inox (A-4) ring