

metric sizes

Tee 90°



Size	Code	Price
16	11 056 0016 07	3.36
20	11 056 0020 07	3.64
25	11 056 0025 07	4.17
32	11 056 0032 07	4.82
40	11 056 0040 07	6.03
50	11 056 0050 07	10.07
63	11 056 0063 07	14.52
75	11 056 0075 07	35.91
90	11 056 0090 07	53.49
110	11 056 0110 07	66.51

Reducing Tee 90°



Size	Code	Price
25/20	11 055 2520 07	5.61
32/20	11 055 3220 07	6.90
32/25	11 055 3225 07	6.90
40/20	11 055 4020 07	7.83
40/25	11 055 4025 07	7.83
40/32	11 055 4032 07	7.83
50/20	11 055 5020 07	12.62
50/25	11 055 5025 07	12.62
50/32	11 055 5032 07	12.62
50/40	11 055 5040 07	12.62
63/25	11 055 6325 07	18.45
63/32	11 055 6332 07	18.45
63/40	11 055 6340 07	18.45
63/50	11 055 6350 07	18.45

Elbow 90°



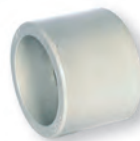
Size	Code	Price
16	11 051 0016 07	2.53
20	11 051 0020 07	3.16
25	11 051 0025 07	3.85
32	11 051 0032 07	4.65
40	11 051 0040 07	5.84
50	11 051 0050 07	10.77
63	11 051 0063 07	14.01
75	11 051 0075 07	29.60
90	11 051 0090 07	37.30
110	11 051 0110 07	54.06

Elbow 45°



Size	Code	Price
16	11 050 0016 07	3.64
20	11 050 0020 07	4.05
25	11 050 0025 07	4.82
32	11 050 0032 07	5.54
40	11 050 0040 07	7.12
50	11 050 0050 07	9.78
63	11 050 0063 07	12.54
75	11 050 0075 07	27.62
90	11 050 0090 07	34.55
110	11 050 0110 07	55.26

Socket



Size	Code	Price
16	11 053 0016 07	2.18
20	11 053 0020 07	2.07
25	11 053 0025 07	2.18
32	11 053 0032 07	2.87
40	11 053 0040 07	3.64
50	11 053 0050 07	6.11
63	11 053 0063 07	10.00
75	11 053 0075 07	16.26
90	11 053 0090 07	20.51
110	11 053 0110 07	31.97

Reducer

Spigot x Socket



Size	Code	Price
20/16	11 057 2016 07	2.50
25/20	11 057 2520 07	3.36
32/20	11 057 3220 07	4.17
32/25	11 057 3225 07	4.17
40/20	11 057 4020 07	4.96
40/25	11 057 4025 07	4.96
40/32	11 057 4032 07	4.96
50/20	11 057 5020 07	5.73
50/25	11 057 5025 07	5.73
50/32	11 057 5032 07	5.73
50/40	11 057 5040 07	5.73
63/25	11 057 6325 07	7.90
63/32	11 057 6332 07	7.90
63/40	11 057 6340 07	7.90
63/50	11 057 6350 07	7.90
75/63	11 057 7563 07	13.83
90/63	11 057 9063 07	19.24
90/75	11 057 9075 07	19.24
110/63	11 057 1163 07	26.25
110/90	11 057 1190 07	26.25

Female Adaptor

BSP or NPT threaded



Size	Code	Price
20 x 1/2	11 034 2020 07	10.00
25 x 3/4	11 034 2525 07	11.28
32 x 1	11 034 3232 07	14.68
40 x 1 1/4	11 034 4040 07	16.79
50 x 1 1/2	11 034 5050 07	26.45
63 x 2	11 034 6363 07	33.15

Code shown is for BSP.
Code for NPT on request.

Male Adaptor

BSP or NPT threaded



Size	Code	Price
20 x 3/4	11 035 2025 07	9.39
25 x 1	11 035 2532 07	11.74
32 x 1 1/4	11 035 3240 07	14.12
40 x 1 1/2	11 035 4050 07	23.29
50 x 2	11 035 5063 07	29.40

Code shown is for BSP
Code for NPT on request

Cap



Size	Code	Price
16	11 054 0016 07	2.95
20	11 054 0020 07	3.45
25	11 054 0025 07	3.64
32	11 054 0032 07	4.05
40	11 054 0040 07	5.24
50	11 054 0050 07	6.72
63	11 054 0063 07	9.28
75	11 054 0075 07	14.99
90	11 054 0090 07	20.72
110	11 054 0110 07	27.62

Union

FPM O-Rings



Size	Code	Price
16	11 024 1116 07	11.70
20	11 024 1120 07	13.32
25	11 024 1125 07	14.52
32	11 024 1132 07	17.37
40	11 024 1140 07	24.70
50	11 024 1150 07	34.74
63	11 024 1163 07	47.36

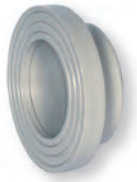


Pressure Ratings

Maximum working pressures (socket fusion):
All sizes PN10

Stub Flange

DIN or ANSI standards



Size	Code	Price
20	11 052 0020 07	2.58
25	11 052 0025 07	2.77
32	11 052 0032 07	3.07
40	11 052 0040 07	3.78
50	11 052 0050 07	4.45
63	11 052 0063 07	5.84
75	11 052 0075 07	12.82
90	11 052 0090 07	18.07
110	11 052 0110 07	25.47

Code shown is for DIN.
ANSI code on request.

Backing Ring Table D/E

Galvanised mild steel



Size	Code	Price
20	860-005-11E	7.58
25	860-007-11E	8.57
32	860-010-11E	9.00
40	860-012-11E	9.28
50	860-015-11E	11.37
63	860-020-11E	16.14
75	860-025-11E	24.12
90	860-030-11E	24.52
110 D	860-040-11D	31.69
110 E	860-040-11E	31.69

Blind Flange

Polypropylene with steel core drilled to BS4504 NP10/16 - black



Size	Code	Price
20	14 045 0020 11	63.15
25	14 045 0025 11	64.13
32	14 045 0032 11	65.72
40	14 045 0040 11	70.46
50	14 045 0050 11	79.73
63	14 045 0063 11	86.82
75	14 045 0075 11	101.61
90	14 045 0090 11	111.87
110	14 045 0110 11	152.70

Backing Ring NP10/16

Galvanised mild steel



Size	Code	Price
20	860-005-11NP	8.57
25	860-007-11NP	9.07
32	860-010-11NP	10.78
40	860-012-11NP	11.45
50	860-015-11NP	12.56
63	860-020-11NP	17.75
75	860-025-11NP	24.29
90	860-030-11NP	28.09
110	860-040-11NP	35.91

Blind Flange

Polypropylene with steel core drilled to ANSI 150 - grey



Size	Code	Price
20	11 043 0020 11	78.93
25	11 043 0025 11	80.09
32	11 043 0032 11	82.06
40	11 043 0040 11	88.01
50	11 043 0050 11	99.66
63	11 043 0063 11	108.53
75	11 043 0075 11	123.93
90	11 043 0090 11	139.68
110	11 043 0110 11	191.01

Backing Ring ASA 150

Galvanised mild steel



Size	Code	Price
20	860-005-11A	8.57
25	860-007-11A	9.07
32	860-010-11A	10.78
40	860-012-11A	11.45
50	860-015-11A	12.56
63	860-020-11A	17.75
75	860-025-11A	24.29
90	860-030-11A	28.09
110	860-040-11A	35.91

Gasket

EPDM



Size	Code	Price
20	861-_-005	0.67
25	861-_-007	0.77
32	861-_-010	0.85
40	861-_-012	1.05
50	861-_-015	1.27
63	861-_-020	2.18
75	861-_-025	2.68
90	861-_-030	2.88
110	861-_-040	4.19

Complete code when ordering
Insert 'ISO' for NP10/16; 'A' for ANSI
150; 'E' for Table D/E

Backing Ring PN10

Polypropylene with steel core



Size	Code	Price
20	11 014 0020 11	9.00
25	11 014 0025 11	9.88
32	11 014 0032 11	12.66
40	11 014 0040 11	16.05
50	11 014 0050 11	18.73
63	11 014 0063 11	21.72
75	11 014 0075 11	24.12
90	11 014 0090 11	28.50
110	11 014 0110 11	33.87

Gasket

FPM



Size	Code	Price
20	862-_-005	3.10
25	862-_-007	4.60
32	862-_-010	6.08
40	862-_-012	9.77
50	862-_-015	10.66
63	862-_-020	14.04
75	862-_-025	20.34
90	862-_-030	26.50
110	862-_-040	45.23

Complete code when ordering
Insert 'ISO' for NP10/16; 'A' for ANSI
150; 'E' for Table D/E

Backing Ring ASA 150

Polypropylene with steel core



Size	Code	Price
20	11 013 0020 11	9.00
25	11 013 0025 11	9.88
32	11 013 0032 11	12.66
40	11 013 0040 11	16.05
50	11 013 0050 11	18.73
63	11 013 0063 11	21.72
75	11 013 0075 11	24.12
90	11 013 0090 11	28.50
110	11 013 0110 11	33.87