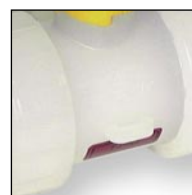


Praher S4 Ball Valve



Lockable Handle



Tagging Point



Valve Bracket



Actuation

Materials

Body - PVDF
Ball Seat - PTFE
Seals - FPM

Sizes

3/8" - 4"/16mm - 110mm

Pressure Rating

3/8"/16mm to 2.1/2"/75mm - 16 bar
3"/90mm - 10 bar
4"/110mm - 6 bar

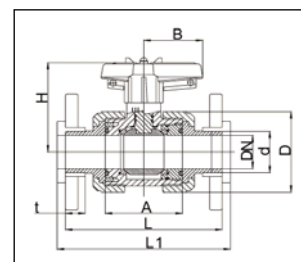
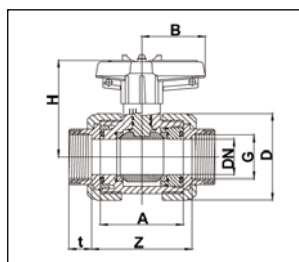
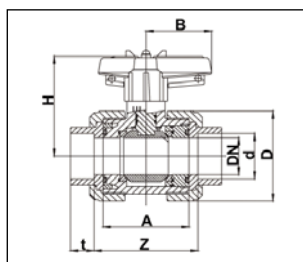
Connections

MM fusion sockets
MM fusion spigots
BSP female thread
Flanged PN10

Features

- Lockable Handle (Lock not supplied)
- True Union design for easy maintenance
- Full bore design
- Tagging point included
- Matched Valve bracket for panel mounting and retrofit actuation.
- Pneumatically and Electrically actuated versions available
- Silicone free on request

Valve Dimensions



d	16	20	25	32	40	50	63	75	90	110
DN	10	15	20	25	32	40	50	65	80	80
G	3/8"	1/2"	3/4"	1"	1 1/4"	1 1/2"	2"	2 1/2"	3	4
L	114.0	124.0	144.0	154.0	174.0	194.0	224.0	284.0	300.0	340.0
L1	120.0	130.0	150.0	160.0	180.0	200.0	230.0	290.0	310.0	350.0
A	62.0	62.0	69.0	73.0	83.0	94.0	108.0	133.0	160.0	160.0
Z	70.0	67.0	79.0	83.0	95.0	114.0	134.0	147.0	211.0	167.0
t	14.5	16.0	17.0	19.5	22.0	25.0	29.0	34.5	38.5	44.0
D	51.8	51.8	61.5	68.5	83.5	98.0	118.0	151.0	183.0	183.0
H	71.5	71.5	77.0	80.5	98.5	106.5	115.5	142.0	160.0	160.0
B	40.0	40.0	51.5	51.5	64.0	73.0	85.0	110.0	132.0	132.0
PN	16	16	16	16	16	16	16	16	10	6
Weight	0.25	0.25	0.38	0.49	0.81	1.22	1.91	3.82	6.43	6.43

Dimensions in mm

**PRAHER
VALVES**

Praher Type S4 Ball Valve

Description: In-line double union ball valve with lockable handle

Mounting: In any position

Maximum Fluid Pressure at 20°C: Sizes 16mm to 75mm - 16bar;
 Sizes 90mm - 10 bar; 110mm - 6 bar

Fluid Temperature Range: 0°C - 140°C

Construction:

Body: PVDF

Seals: FPM

Seats: PTFE

End Connections: Fusion sockets, fusion spigots,
 BSP Female Threaded, Flanged BS4504 EN1072 PN10

Option: Silicon-free



MM Fusion Sockets

	Size	Code	Price
FPM Seals	16	12.1449	94.59
PTFE Seats	20	12.1450	96.12
	25	12.1448	123.94
	32	12.1451	158.46
	40	12.1452	210.01
	50	12.1453	297.94
	63	12.1454	412.31
	75	12.1455	705.14
	90	12.1456	937.35
	110	12.2032	1388.07

MM Fusion Spigots

	Size	Code	Price
FPM Seals	16	12.2259	94.59
PTFE Seats	20	12.1491	96.12
	25	12.1492	123.94
	32	12.1493	158.46
	40	12.1494	210.01
	50	12.1495	297.94
	63	12.1496	412.31
	75	12.1497	705.14
	90	12.1498	937.35
	110	12.2012	1388.07

BSP Female Threaded

	Size	Code	Price
FPM Seals	3/8	12.2093	101.26
PTFE Seats	1/2	12.1482	102.96
	3/4	12.1483	132.84
	1	12.1484	168.18
	1 1/4	12.1485	221.11
	1 1/2	12.1486	313.30
	2	12.1487	433.67
	2 1/2	12.1488	792.21
	3	12.2349	1217.87

Flanged BS4504 PN10/16

	Size	Code	Price
FPM Seals	1/2	12.2025	186.10
PTFE Seats	3/4	12.2026	266.32
	1	12.2027	327.81
	1 1/4	12.2502	417.45
	1 1/2	12.2503	578.80
	2	12.2504	773.44
	2 1/2	12.2505	1304.42
	3	12.2506	1833.69

Praher Valve Bracket for Type S4 Ball Valves

- For actuator or control panel mounting
- Can be used to provide fixed point mounting to support

Size	Code	Price
16	17.0279	34.14
20	17.0279	34.14
25	17.0280	36.56
32	17.0281	38.80
40	17.0228	41.38
50	17.0230	43.43
63	17.0232	46.03
75	17.0275	64.86
90	17.0282	71.89
110	17.0282	71.89



Valve shown with bracket

Praher Type S4 T & L-Port Ball Valve

Description: In-line horizontal T-port or L-port ball valve with lockable handle and union ends

Mounting: In any position

Maximum Fluid Pressure at 20°C: 16 bar

Fluid Temperature Range: 0°C - 140°C

Construction:

Body: PVDF

Seals: FPM

Seats: PTFE

End Connections: Fusion sockets or fusion spigots



T-Port Ball Valve

MM Fusion Sockets

	Size	Code	Price
FPM Seals	16	124918	232.20
PTFE Seals	20	124922	248.43
	25	125030	307.31
	32	124926	385.88
	40	125032	466.99
	50	124930	578.80
	63	124934	809.28

MM Fusion Spigots

	Size	Code	Price
FPM Seals	16	124920	232.20
PTFE Seals	20	124924	248.43
	25	125034	307.31
	32	124928	385.88
	40	125036	466.99
	50	124932	578.80
	63	124936	809.28

L-Port Ball Valve

MM Fusion Sockets

	Size	Code	Price
FPM Seals	16	124919	232.20
PTFE Seals	20	124923	248.43
	25	125031	307.31
	32	124927	385.88
	40	125033	466.99
	50	124931	578.80
	63	124935	809.28

MM Fusion Spigots

	Size	Code	Price
FPM Seals	16	124921	232.20
PTFE Seals	20	124925	248.43
	25	125035	307.31
	32	124929	385.88
	40	125037	466.99
	50	124933	578.80
	63	124937	809.28

Praher Type S4 Ball Valve with Actuator Adaptor Kit

FPM Seals

Size	Code	Price
16	122.433	184.62
20	122.434	186.13
25	122.435	221.58
32	122.436	264.41
40	122.437	339.75
50	122.438	519.98
63	122.439	689.86
75	122.440	960.18
90	122.441	1248.23
110	122.442	1787.40

Prices on request for alternative end connections



Praher Laboratory/Sampling Ball Valve

Description: In-line ball valve for laboratory or sampling use

Mounting: In any position

Maximum Fluid Pressure at 20°C: 10 bar

Fluid Temperature Range: 0°C - 120°C

Construction:

Body: PVDF

Seals: FPM

Seats: PTFE

End Connections: 1/4" R or NPT Threaded; Hose Connection included



Valve with R/NPT Adaptor and Plug

	Size	Code	Price
R Male x Female	1/4	12.2459	30.22
NPT Male x Female	1/4	12.2460	32.10

Hose Nozzle

	Size	Code	Price
BSP Male	1/4	141.145	13.85
NPT Male	1/4	140.205	13.85

ASV Stubbe Gauge Guard

Description: Pressure gauge connector with isolating diaphragm

Mounting: In any position

Maximum Fluid Pressure at 20°C: 10 bar

Fluid Temperature Range: 0°C-120°C

Construction:

Body: PVDF

Diaphragm: PTFE (EPDM backed)

End Connections: Fusion Spigots, NPT Female Threaded



Please note: gauge not included.

Size	Code	Price
25x1/4x1/4"	135535	133.78
32x1/2x1/2"	135538	133.78

Size	Code	Price
1/4x1/4"	135541	140.07
1/2x1/2"	135544	140.07

Praher T4 Diaphragm Valve



Lockable Handle



Visual Position Indicator



Optional Valve Support Plates

General

Sealing material: EPDM / EPDM-PTFE / FPM

Body material: PVDF

Dimensions: DN 15/d 20 - DN125/d140

Operating Pressure

DN 15 / 1/2" - DN 125 / 5" 10 bar

Connections

PVDF union sockets 20mm-63mm

PVDF fusion spigots 20mm-110mm

Flanged PN10 20mm-140mm

Technical Specification

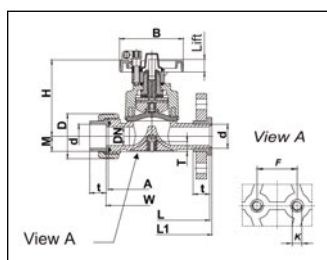
For example:
 TYPE PRAHER, DIN 2403
 PVDF Diaphragm valve T4 DN 15 d20
 PVDF mm fusion spigot
 Sealing material EPDM-PTFE
 Safety gear wheel
 Max. Operating pressure 10 bar

Features

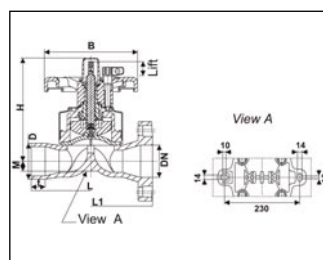
- Safety gear wheel
- Corrosion Resistant
- Maintenance free operation over a long working life
- Suitable for aggressive and dirty media
- Radial installation or removal
- Easy replacement of the diaphragms

Valve Dimensions

DN 15 - DN 50



DN 65 - DN 80



d	20	25	32	40	50	63	75	90	110	140
DN	15	20	25	32	40	50	65	80	100	125
G	1/2"	3/4"	1"	1 1/4"	1 1/2"	2"	2 1/2"	3"	4"	5"
M	16.5	16.5	20.1	31.5	31.5	38.6	25.0	25.0	25.0	25.0
H	100.0	100.0	107.0	144.0	144.0	170.0	260.0	260.0	330.0	330.0
B	86.0	86.0	86.0	136.0	136.0	136.0	234.0	234.0	234.0	234.0
F	24.5	24.5	24.5	43.5	43.5	43.5	-	-	-	-
Lift	9.0	9.0	11.0	22.0	22.0	28.0	35.0	35.0	45.0	45.0
K	M6	M6	M6	M8	M8	M8	-	-	-	-
L	124.0	144.0	154.0	174.0	194.0	224.0	284.0	300.0	340.0	-
L1	130.0	150.0	160.0	180.0	200.0	230.0	-	310.0	350.0	400.0
T	12.0	12.0	12.0	15.0	15.0	15.0	-	-	-	-
t	28.5	36.0	36.0	38.5	46.0	46.0	37.0	37.0	50.0	-
PN	10	10	10	10	10	10	10	10	10	10

Dimensions in mm

Praher Type T4 Diaphragm Valve

Description: In-line diaphragm valve with position indicator

Mounting: In any position

Maximum Fluid Pressure at 20°C: 10 bar

Fluid Temperature Range: 0°C - 120°C

Construction:

Body: PVDF

Diaphragm: PTFE (EPDM backed), FPM or EPDM

End Connections: Union Sockets, Fusion Spigots, Flanged (on request)

Option: Silicon-free



MM Fusion Spigots

PTFE Diaphragm

Size	Code	Price
20	12.2798	207.44
25	12.2799	221.96
32	12.2800	257.82
40	12.2801	383.31
50	12.2802	420.87
63	12.2803	548.91
75	12.0184	1184.90
90	12.0185	1500.75
110	12.0917	1811.49

Flanged BS4504 PN10

PTFE Diaphragm

Size	Code	Price
1/2/20	12.0261	236.49
3/4/25	12.0265	237.32
1/32	12.0270	284.28
1 1/4/40	12.0271	429.43
1 1/2/50	12.0272	466.99
2/63	12.0273	574.52
2 1/2/75	12.0274	1036.35
3/90	12.0275	1779.05
4/110	12.0921	1871.25
5/140	12.0922	4864.24

MM Union Sockets

PTFE Diaphragm

Size	Code	Price
20	12.5074	250.97
25	12.5075	259.52
32	12.5076	297.08
40	12.5077	462.68
50	12.5078	512.22
63	12.5079	694.88

Spare PTFE Diaphragm

Size	Code	Price
20	05.0473	51.00
25	05.0473	51.00
32	05.0474	57.23
40	05.0475	71.02
50	05.0475	71.02
63	05.0476	80.35
75	12.0918	391.34
90	12.0918	391.34
110	12.0919	451.43
140	12.0919	451.43

Also available with EPDM or FPM diaphragms.
Please enquire for details.

Diaphragm Valve Mounting Plate

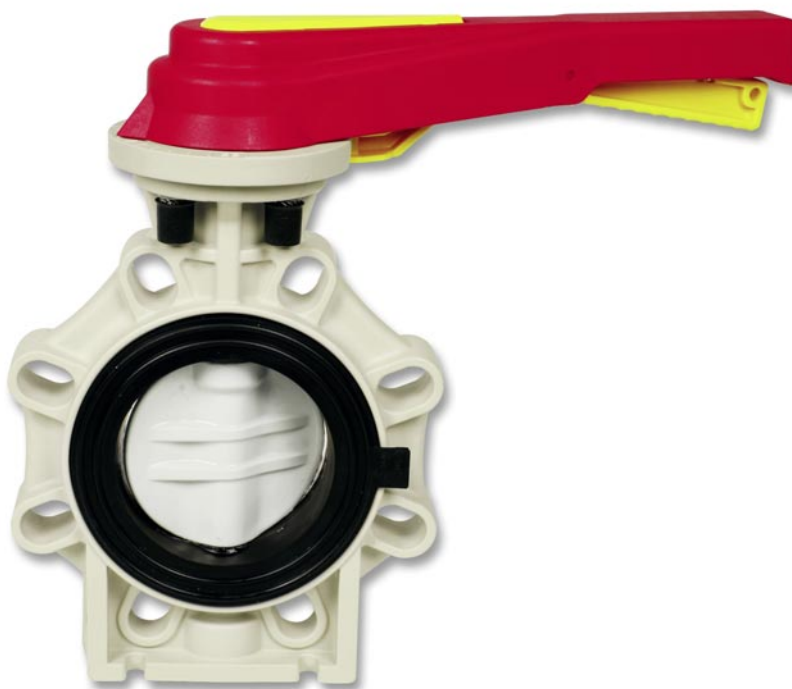
- Ensures clearance of union nut from mounting surface
- Complete with two fixing screws

Valve Size	Thickness (mm)	Code	Price
20	16.0	14.0103	6.38
25	23.0	14.0102	6.38
32	23.0	14.0102	6.38
40	18.5	14.0123	10.37
50	23.5	14.0109	10.37
63	23.5	14.0109	10.37



manual valves

Praher K4 Butterfly Valve



Locking Handle



Universal Drilling



PP-GF Body
PVDF disc



Support Lugs in
Base

Materials

Body - PP-GF
Disc - PVDF
Seals - FPM

Sizes

2 1/2"/75mm - 8"/225mm

Pressure Rating

PN10

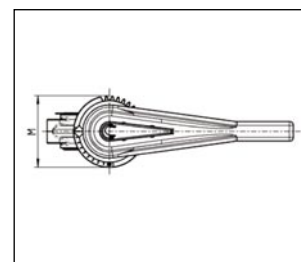
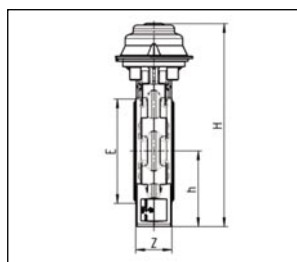
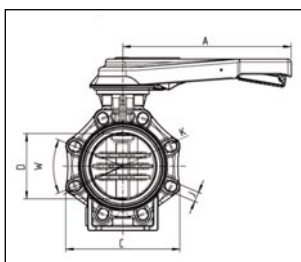
Connections

Between flanges, universally drilled

Features

- Only Body Seal and Disc in contact with media
- Double sealed shaft
- Valve support lugs in base
- Direct actuator mounting
- Low torque operation
- Multi-position Lockable Handle
- Manual or Gear operation
- All sizes PN10 rated
- Universal drilling - can be used with DIN, ANSI, BS and JIS flanges

Valve Dimensions



Size	2 1/2"/75	3"/90	4"/110	6"/160	8"/225
A	230	230	300	386	386
D	65	80	100	150	200
C	133	176	206	261	314
W	90°	45°	45°	45°	45°
J	19	19	19	23	23
K	127-145	146-160	175-190.5	234.5-241.3	290-298.5
H	285	292	322	396	458
h	100	100	115	147.5	175
E	98	116	146	196	251
M	114	114	114	150	150
Z	46	49	56	70	71
PN	10 bar	10 bar	10 bar	10 bar	10 bar

Dimensions in mm

Praher Type K4 Butterfly Valve

Description: Lug style butterfly valve with universal drilling for mounting between flanges. (DIN, ANSI & BS)

Construction:

Body: PP-GF

Disc: PVDF

Seals: FPM

Pressure rating: PN10

Size: 2 1/2"/75mm - 8"/225mm



Lever Operated

FPM Seals

Size	Code	Price
2 1/2"/75	12.5880	523.32
3"/90	12.5881	642.05
4"/110	12.5882	708.33
5"/140	12.8460	918.04
6"/160	12.5883	1037.51
8"/225	12.5884	1408.04



Gear Operated

FPM Seals

Size	Code	Price
2 1/2"/75	12.6030	767.74
3"/90	12.6031	886.22
4"/110	12.6032	940.92
5"/140	12.8765	1197.06
6"/160	12.6033	1275.77
8"/225	12.6034	1646.30

manual valves

Praher K4 Check Valve



Visual Position Indicator



Universal Drilling



85° Max Opening

Materials

Body - PVDF
Disc - PVDF
Seals - FPM

Sizes

2 1/2"/75mm - 10"/250mm

Pressure Rating

PN10

Connections

Between flanges, universal drilled

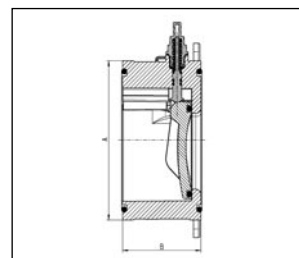
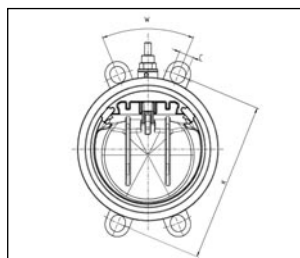
Features

- Excellent Flow Rates
- Wide opening (85%)
- Low pressure drop
- Visual open-closed indicator
- Spring return
- All sizes PN10 rated
- Universal drilling - can be used with DIN, ANSI, BS and JIS flanges

Tightening torque for flange connections

DN	65	80	100	150	200	250	300
Nm	15	18	20	40	55	60	65

Valve Dimensions



DN	A	B	C	K	W
65	115	63	20	139-145	90°
80	128	71	20	150-160	45°
100	155	80	20	175-191	45°
150	212	106	24	234-242	45°
200	264	140	24	290-299	45°
250	325	140	27	350-362	30°

Dimensions in mm

Praher Type K4 Check Valve

Description: Lug style check valve with universal drilling for mounting between flanges. (DIN, ANSI & BS)

Construction:

Body: PVDF

Seals: FPM

Pressure rating: PN10

Size: 2 1/2"/75mm - 10"/250mm



	Size	Code	Price
FPM Seals	2 1/2"/75	12.5853	573.09
	3"/90	12.5854A	667.28
	4"/110	12.5855A	798.80
	6"/160	12.5856	1154.14
	8"/225	12.5857	2284.88
	10"/250	12.5858	4132.66

Kv Value Table		
Pressure Lost	1 bar	0.001 bar
DN 80	2958 l/min	94 l/min
DN 100	5633 l/min	178 l/min
DN 150	12466 l/min	394 l/min
DN 200	21166 l/min	699 l/min

Pressure loss based on maximum opening of 85%

Praher Type S4 Check (Non-Return) Valve

Description: In-line spring weighted cone check valve

Mounting: In any position

Maximum Fluid Pressure at 20°C: Sizes 16mm to 75mm - 16 bar;
 Sizes 90mm to 110mm - 10 bar

Fluid Temperature Range: 0°C - 120°C

Construction:

Body: PVDF

Seals: FPM

Spring: Stainless steel sleeved in PTFE

End Connections: Fusion sockets, fusion spigots or BSP Female Threaded



MM Fusion Sockets

FPM Seals	Size	Code	Price
	16	12.1658	140.52
	20	12.1659	142.23
	25	12.1660	179.27
	32	12.1661	210.86
	40	12.1662	308.20
	50	12.1663	396.10
	63	12.1664	532.70
	75	12.1665	771.70
	90	12.1666	1015.85
	110	12.2350	1418.81

MM Fusion Spigots

FPM Seals	Size	Code	Price
	16	12.1676	140.52
	20	12.1677	142.23
	25	12.1678	179.27
	32	12.1679	210.86
	40	12.1680	308.20
	50	12.1681	396.10
	63	12.1682	532.70
	75	12.1683	771.70
	90	12.1684	1015.85
	110	12.2351	1418.81

BSP Female Threaded

FPM Seals	Size	Code	Price
	3/8	12.1667	147.02
	1/2	12.1668	148.71
	3/4	12.1669	187.81
	1	12.1670	220.25
	1 1/4	12.1671	319.27
	1 1/2	12.1672	411.46
	2	12.1673	553.18
	2 1/2	12.1674	774.46
	3	12.1675	1028.70

Need advice?

Our expert team are here to help.
 Call our freephone:

0800 975 79 71

Or from outside of the UK:
 +44 191 521 3111



Praher Type S4 Wafer Check Valve

Description: Wafer style flap check valve

Mounting: In any position, between flanges to BS4504 EN1072 PN10.

Optional spring return for mounting in horizontal position or for pulsating flow.

Maximum Fluid Pressure at 20°C: 10 bar

Fluid Temperature Range: 0°C - 120°C

Construction:

Body: PVDF

Seals: FPM

Spring (optional): Stainless Steel or hastelloy

End Connections: Flange mounted (flanges not included)



No Spring Return

FPM Seals	Size	Code	Price
	1 1/4"/40	07.0194	201.47
	1 1/2"/50	07.0204	206.59
	2"/63	07.0044	222.82
	2 1/2"/75	07.0054	257.82
	3"/90	07.0064	309.88
	4"/110	07.0074	426.84
	5"/140	07.0084	575.36
	6"/160	07.0094	810.99
	8"/225	07.0104	1932.71
	10"/280	07.0114	2168.33

Stainless Steel Spring Return

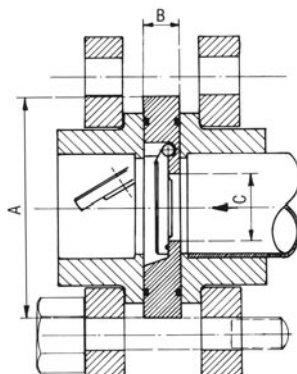
FPM Seals	Size	Code	Price
	1 1/4"/40	07.0195	280.88
	1 1/2"/50	07.0202	285.11
	2"/63	07.0045	304.77
	2 1/2"/75	07.0055	344.01
	3"/90	07.0065	404.64
	4"/110	07.0075	526.72
	5"/140	07.0085	714.55
	6"/160	07.0095	884.42
	8"/225	07.0105	1980.51
	10"/280	07.0115	2240.04

Hastelloy Spring Return

FPM Seals	Size	Code	Price
	1 1/4"/40		
	1 1/2"/50		
	2"/63		
	2 1/2"/75		
	3"/90		
	4"/110		
	5"/140		
	6"/160		
	8"/225		
	10"/280		

on application

DIMENSIONS (mm)



D	DN	A	B	C
63	50	109	18	32
75	65	129	20	40
90	80	144	20	52
110	100	164	23	70
140	125	195	23	92
160	150	220	26	112
225	200	275	35	150
280	250	330	40	190