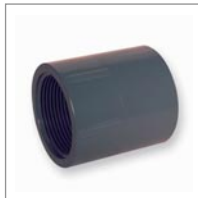
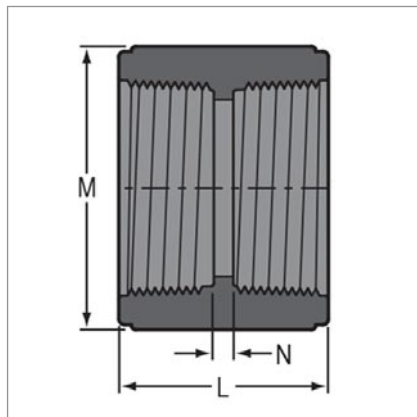


## PVCC Threaded Fittings Inch Sizes Socket

NPT Female Thread



Size	Code	L	M	N	Approx Wt. (grams)
1/4	830-002C	34.13	20.64	3.97	13.50
3/8	830-003C	37.30	25.40	7.14	18.00
1/2	830-005C	41.28	32.54	6.35	31.50
3/4	830-007C	42.86	41.28	2.38	40.50
1	830-010C	53.18	49.21	3.18	67.50
1 1/4	830-012C	55.56	57.94	4.76	94.50
1 1/2	830-015C	56.35	66.68	4.76	126.00
2	830-020C	56.35	76.20	5.55	148.50
2 1/2	830-025C	84.14	90.49	3.18	306.00
3	830-030C	88.10	111.13	16.67	504.00
4	830-040C	92.87	141.29	4.76	684.00
6	830-060CF	95.25	182.56	19.05	742.50

Please note: This information is based on current manufacturers details, and is subject to change without notification.