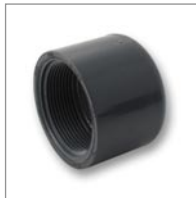
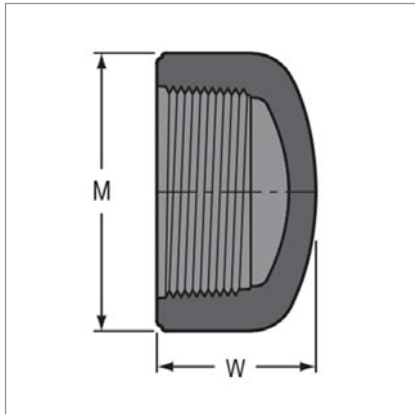


PVCC Threaded Fittings Inch Sizes Cap

NPT Female Thread



Size	Code	M	W	Approx Wt. (grams)
1/4	848-002C	23.02	23.81	9.00
3/8	848-003C	24.60	23.02	9.00
1/2	848-005C	30.16	26.99	18.00
3/4	848-007C	27.78	30.95	18.00
1	848-010C	46.83	36.51	45.00
1 1/4	848-012C	56.35	38.89	67.50
1 1/2	848-015C	64.29	41.28	85.50
2	848-020C	80.17	45.24	130.50
2 1/2	848-025C	92.08	61.91	243.00
3	848-030C	111.13	61.91	405.00
4	848-040C	138.11	77.79	594.00

Please note: This information is based on current manufacturers details, and is subject to change without notification.