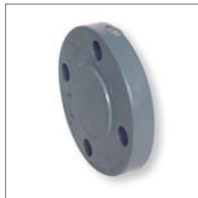
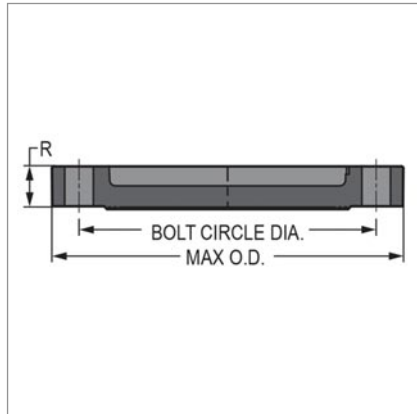


## PVCC Flanges Inch Sizes Blind Flange

Drilled ANSI 150



Size	Code	R	P.C.D.	Bolt Holes	Bolt Size	No. of Length	Max O.D.	Min. Bolt Approx Wt. (grams)
1/2	853-005C	13.49	60.33	101.60	12.70	50.80	89.69	85.50
3/4	853-007C	15.88	69.85	101.60	12.70	50.80	98.43	126.00
1	853-010C	19.05	79.38	101.60	12.70	57.15	107.95	184.50
1 1/4	853-012C	18.25	88.90	101.60	12.70	57.15	117.48	166.50
1 1/2	853-015C	18.25	97.63	101.60	12.70	63.50	128.59	225.00
2	853-020C	21.43	120.65	101.60	15.88	76.20	151.60	369.00
2 1/2	853-025C	25.40	139.70	101.60	15.88	82.55	177.80	724.50
3	853-030C	26.99	152.40	101.60	15.88	82.55	190.50	733.50
4	853-040C	29.37	190.50	203.20	15.88	88.90	230.19	1,089.00
6	853-060C	34.93	241.30	203.20	19.05	101.60	279.40	1,962.00
8	853-080C	36.51	298.45	203.20	19.05	114.30	342.90	3,073.50
10	853-100C	42.86	361.95	304.80	22.23	127.00	406.40	5,094.00
12	853-120C	42.86	431.80	304.80	22.23	127.00	482.60	6,970.50
14	853-140CF							
16	853-160CF							

Please note: This information is based on current manufacturers details, and is subject to change without notification.