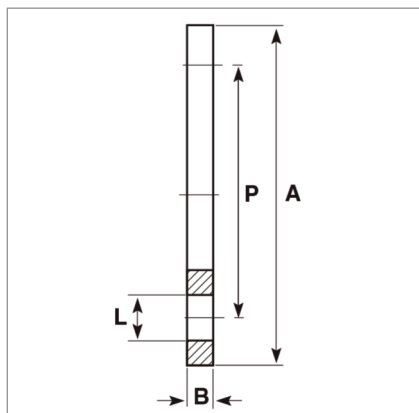


Galvanised MS Backing Rings

Backing Ring Table E



All sizes in mm

Inch n.b	mm o.d.	nominal	pcd (P)	od (A)	thickness (B)	bolt (L)	no. bolts	Approx Wt. (kg)
1/2"	20	15	65	95	7	1/2"	4	0.25
3/4"	25	20	73	102	7	1/2"	4	0.35
1"	32	25	83	114	8	1/2"	4	0.45
1 1/4"	40	32	87	121	8	1/2"	4	0.70
1 1/2"	50	40	98	133	8	1/2"	4	0.85
2"	63	50	114	152	8	5/8"	4	1.00
2 1/2"	75	65	127	165	8	5/8"	4	1.15
3"	90	80	146	184	10	5/8"	4	1.30
4"	110	100	178	216	12	5/8"	8	1.70
5"	140	125	210	254	12	5/8"	8	2.20
6"	160	150	235	279	12	3/4"	8	2.45
8"	225	200	292	337	12	3/4"	8	3.10
10"	280	250	356	406	15	3/4"	12	5.45
12"	315	300	406	457	20	7/8"	12	9.60
14"	355	350	470	527	20	7/8"	12	12.80
16"	400	400	521	578	22	1"	12	18.10

Please note: This information is based on current manufacturers details, and is subject to change without notification.
Backing ring thickness may differ slightly dependent on sheet availability.