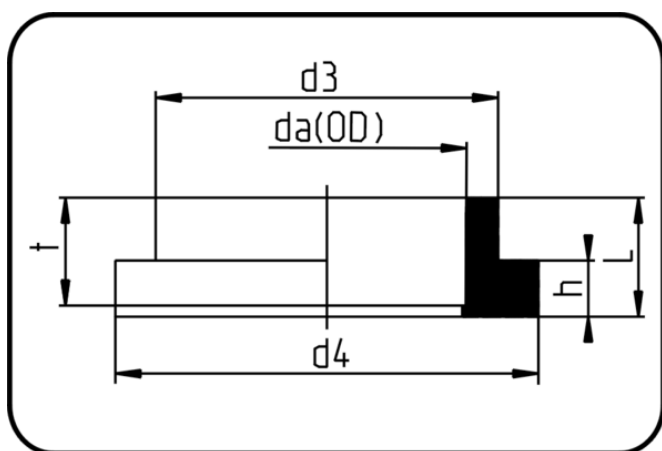


## Fittings for Socket Welding



Code: 052

- Flange adaptor DIN
- injection moulded
- Socket-welding
- PPR grey

Backing Rings please see Accessories.

Dimension	Code	Detail	da(OD) mm	L mm	d3 mm	d4 mm	h mm	t mm	Weight
20	11.052.0020.07	20 - MOP 16 bar	20	21	27	45	10	15,5	0.015
25	11.052.0025.07	25 - MOP 16 bar	25	23	33	58	10	16,5	0.025
32	11.052.0032.07	32 - MOP 20 bar	32	23,5	41	68	10,5	19	0.033
40	11.052.0040.07	40 - MOP 20 bar	40	26	50	78	10,5	21,5	0.044
50	11.052.0050.07	50 - MOP 20 bar	50	29	61	88	13	24	0.065
63	11.052.0063.07	63 - MOP 20 bar	63	34	76	102	14,5	28	0.093
75	11.052.0075.07	75 - MOP 16 bar	75	38	90	122	16	31,5	0.15
90	11.052.0090.07	90 - MOP 16 bar	90	42	108	138	17	37	0.19
110	11.052.0110.07	110 - MOP 10 bar	110	47	131	158	18	42	0.287