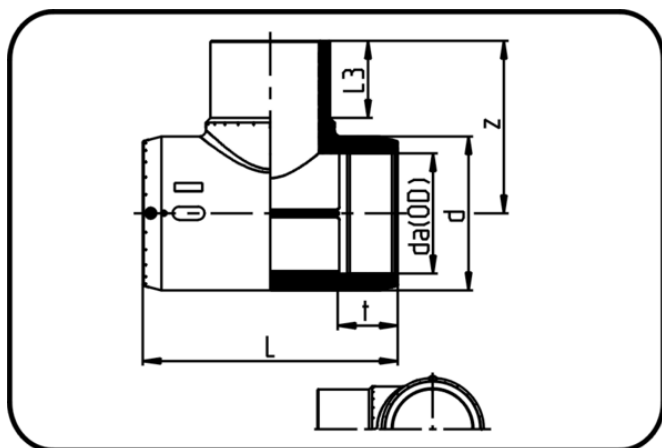


Electro Fusion Fittings



Code: 176

- E-Tee
- MOP water 16bar/gas 10bar
- injection moulded
- Electro-fusion
- PE 100-RC black

Dimension	Code	Detail	da(OD) mm	z mm	L mm	L3 mm	d mm	t mm	Weight
20	70.176.0020.11	20 SDR 11-7,4	20	62	110,5	42,5	32	36	0.065
25	70.176.0025.11	25 SDR 11-7,4	25	66	110,5	42,5	37	39,5	0.08
32	70.176.0032.11	32 SDR 11	32	76	122,5	47	47	43	0.129
40	70.176.0040.11	40 SDR 11	40	86	139,5	50,5	57,5	48	0.206
50	70.176.0050.11	50 SDR 11	50	100,5	160	58	69	54	0.3
63	70.176.0063.11	63 SDR 17-11	63	116	185,5	66	87	62	0.557
75	70.176.0075.11	75 SDR 17-11	75	128	210,5	71,5	96,5	69	0.64
90	70.176.0090.11	90 SDR 17-11	90	168,5	293	91	124	76	1.748
110	70.176.0110.11	110 SDR 17-11	110	191	326,5	101	148,5	71,5	2.63
125	70.176.0125.11	125 SDR 17-11	125	211	347,5	111	170	86	3.7
140	70.176.0140.11	140 SDR 17-11	140	226,5	349	111	189	88,5	4.6
160	70.176.0160.11	160 SDR 17-11	160	245	370,5	122	211,5	85	6.12
180	70.176.0180.11	180 SDR 17-11	180	275	419	130	232	98	8.85
200	70.176.0200.11	200 SDR 17-11	200	302	427	136	264	105	10.98
225	70.176.0225.11	225 SDR 17-11	225	325	479,5	147	287	110	13.4