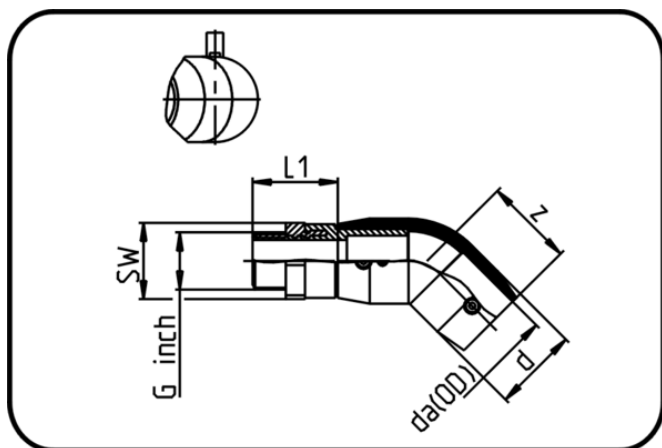


Electro Fusion Fittings



- E-Adaptor Elbow 45°
- with steel-male thread
- injection moulded
- Electro-fusion
- PE 100 black

Dimension	Code	Detail	da(OD) mm	z mm	L1 mm	d mm	SW mm	G inch	Weight
20 X 1/2	25.188.2021.11	20X1/2" SDR 11	20	52	45	30	32	0,5	0.16
25 X 3/4	25.188.2526.11	25X3/4" SDR 11	25	52	46	35	36	0,75	0.18
32 X 1	25.188.3233.11	32X1" SDR 11	32	56	49	42	41	1	0.26
40 X 1 1/4	25.188.4041.11	40X1 1/4" SDR 17/11	40	63	52	53	50	1,25	0.4
50 X 1 1/2	25.188.5051.11	50X1 1/2" SDR 17/11	50	70	55	67	60	1,5	0.62
63 X 2	25.188.6364.11	63X2" SDR 17/11	63	82	62	83	70	2	0.98