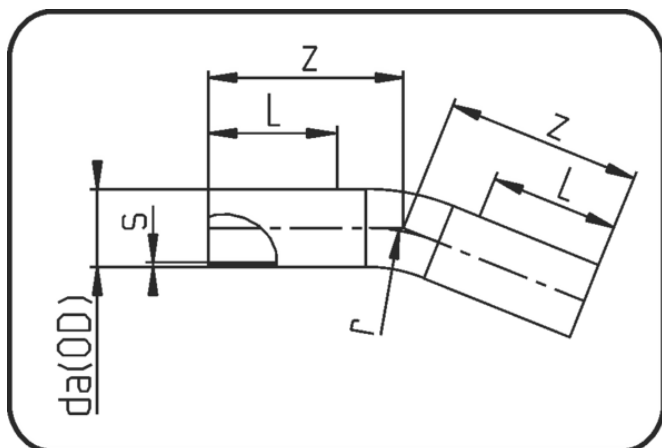


## Sweep Bends



Code: 395

- Sweep bend 22°
- radius 1.5 x OD
- formed out of pipe
- Butt + E-socket-welding
- PE 100-RC black

Dimension	Code	Detail	da(OD) mm	s mm	z mm	r mm	L mm	Weight
90	70.395.0090.17	90 SDR17 ISO S-8 10 bar	90	5,4	350	135	150	0.98
110	70.395.0110.17	110 SDR17 ISO S-8 10 bar	110	6,6	330	165	150	1.43
125	70.395.0125.17	125 SDR17 ISO S-8 10 bar	125	7,4	380	188	150	2.07
140	70.395.0140.17	140 SDR17 ISO S-8 10 bar	140	8,3	395	210	150	2.7
160	70.395.0160.17	160 SDR17 ISO S-8 10 bar	160	9,5	420	480	150	3.75
180	70.395.0180.17	180 SDR17 ISO S-8 10 bar	180	10,7	450	270	150	5.08
200	70.395.0200.17	200 SDR17 ISO S-8 10 bar	200	11,9	480	300	150	6.7
225	70.395.0225.17	225 SDR17 ISO S-8 10 bar	225	13,4	510	338	150	9.11
250	70.395.0250.17	250 SDR17 ISO S-8 10 bar	250	14,8	550	375	250	11.99
280	70.395.0280.17	280 SDR17 ISO S-8 10 bar	280	16,6	550	420	300	15.2
315	70.395.0315.17	315 SDR17 ISO S-8 10 bar	315	18,7	700	473	450	24.6
355	70.395.0355.17	355 SDR17 ISO S-8 10 bar	355	21,1	750	533	450	33.6
400	70.395.0400.17	400 SDR17 ISO S-8 10 bar	400	23,7	850	600	550	48.1
450	70.395.0450.17	450 SDR17 ISO S-8 10 bar	450	26,7	900	675	550	64.4
500	70.395.0500.17	500 SDR17 ISO S-8 10 bar	500	29,7	1.000	750	600	88.4
560	70.395.0560.17	560 SDR17 ISO S-8 10 bar	560	33,2	1.050	840	650	116
630	70.395.0630.17	630 SDR17 ISO S-8 10 bar	630	37,4	1.250	945	750	176
90	70.395.0090.11	90 SDR11 ISO S-5 16 bar	90	8,2	350	135	150	1.42
110	70.395.0110.11	110 SDR11 ISO S-5 16 bar	110	10	330	165	150	2.07
125	70.395.0125.11	125 SDR11 ISO S-5 16 bar	125	11,4	380	188	150	3.06
140	70.395.0140.11	140 SDR11 ISO S-5 16 bar	140	12,7	395	210	150	3.96
160	70.395.0160.11	160 SDR11 ISO S-5 16 bar	160	14,6	420	480	150	5.66
180	70.395.0180.11	180 SDR11 ISO S-5 16 bar	180	16,4	450	270	150	7.49

Dimension	Code	Detail	da(OD) mm	s mm	z mm	r mm	L mm	Weight
200	70.395.0200.11	200 SDR11 ISO S-5 16 bar	200	18,2	480	300	150	9.88
225	70.395.0225.11	225 SDR11 ISO S-5 16 bar	225	20,5	510	338	150	13.36
250	70.395.0250.11	250 SDR11 ISO S-5 16 bar	250	22,7	550	375	250	17.66
280	70.395.0280.11	280 SDR11 ISO S-5 16 bar	280	25,4	550	420	300	22.2
315	70.395.0315.11	315 SDR11 ISO S-5 16 bar	315	28,6	700	473	450	36.3
355	70.395.0355.11	355 SDR11 ISO S-5 16 bar	355	32,2	750	533	450	49.4
400	70.395.0400.11	400 SDR11 ISO S-5 16 bar	400	36,3	850	600	550	70.9
450	70.395.0450.11	450 SDR11 ISO S-5 16 bar	450	40,9	900	675	550	95
500	70.395.0500.11	500 SDR11 ISO S-5 16 bar	500	45,4	1.000	750	600	130
560	70.395.0560.11	560 SDR11 ISO S-5 16 bar	560	50,8	1.050	840	650	172
630	70.395.0630.11	630 SDR11 ISO S-5 16 bar	630	57,2	1.250	945	750	176