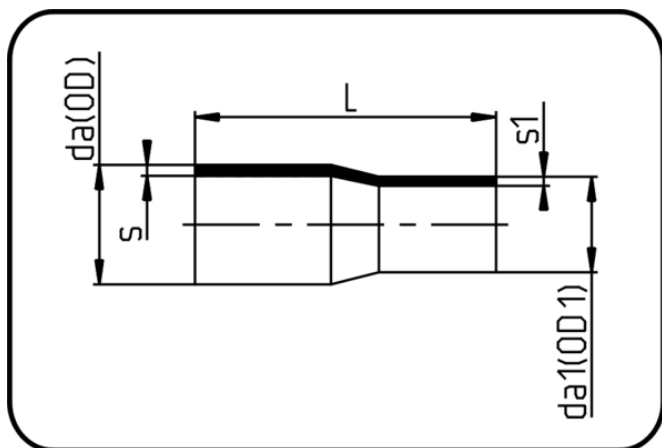


Elongated Fittings



Code: 067

- Reducer concentric
- long spigot
- injection moulded
- Butt + E-socket-welding
- PE 100-RC black

| Dimension | Code | Detail | da(OD) mm | da1(OD1) mm | s mm | L mm | s1 mm | Weight |
|-----------|----------------|-----------------------|--------------|----------------|---------|---------|----------|--------|
| 75/63 | 70.067.7563.17 | 75/63 SDR17 ISO S-8 | 75 | 63 | 4,5 | 146 | 3,8 | 0.129 |
| 90/63 | 70.067.9063.17 | 90/63 SDR17 ISO S-8 | 90 | 63 | 5,4 | 172 | 3,8 | 0.199 |
| 90/75 | 70.067.9075.17 | 90/75 SDR17 ISO S-8 | 90 | 75 | 5,4 | 163 | 4,5 | 0.196 |
| 110/63 | 70.067.1163.17 | 110/63 SDR17 ISO S-8 | 110 | 63 | 6,6 | 182 | 3,8 | 0.297 |
| 110/90 | 70.067.1190.17 | 110/90 SDR17 ISO S-8 | 110 | 90 | 6,6 | 175 | 5,4 | 0.34 |
| 125/63 | 70.067.1263.17 | 125/63 SDR17 ISO S-8 | 125 | 63 | 7,4 | 187 | 3,8 | 0.375 |
| 125/90 | 70.067.1290.17 | 125/90 SDR17 ISO S-8 | 125 | 90 | 7,4 | 191,5 | 5,4 | 0.438 |
| 125/110 | 70.067.1211.17 | 125/110 SDR17 ISO S-8 | 125 | 110 | 7,4 | 193 | 6,6 | 0.483 |
| 140/125 | 70.067.1412.17 | 140/125 SDR17 ISO S-8 | 140 | 125 | 8,3 | 211 | 7,4 | 0.65 |
| 160/90 | 70.067.1690.17 | 160/90 SDR17 ISO S-8 | 160 | 90 | 9,5 | 215 | 5,4 | 0.69 |
| 160/110 | 70.067.1611.17 | 160/110 SDR17 ISO S-8 | 160 | 110 | 9,5 | 222 | 6,6 | 0.79 |
| 160/125 | 70.067.1612.17 | 160/125 SDR17 ISO S-8 | 160 | 125 | 9,5 | 227 | 7,4 | 0.84 |
| 160/140 | 70.067.1614.17 | 160/140 SDR17 ISO S-8 | 160 | 140 | 9,5 | 234 | 8,3 | 0.945 |
| 180/125 | 70.067.1812.17 | 180/125 SDR17 ISO S-8 | 180 | 125 | 10,7 | 270 | 7,4 | 1.26 |
| 180/160 | 70.067.1816.17 | 180/160 SDR17 ISO S-8 | 180 | 160 | 10,7 | 245 | 9,5 | 1.28 |
| 200/160 | 70.067.2016.17 | 200/160 SDR17 ISO S-8 | 200 | 160 | 11,9 | 253 | 9,5 | 1.54 |
| 225/160 | 70.067.2216.17 | 225/160 SDR17 ISO S-8 | 225 | 160 | 13,4 | 258 | 9,5 | 1.839 |
| 250/160 | 70.067.2516.17 | 250/160 SDR17 ISO S-8 | 250 | 160 | 14,8 | 318 | 9,5 | 2.762 |
| 250/200 | 70.067.2521.17 | 250/200 SDR17 ISO S-8 | 250 | 200 | 14,8 | 310 | 11,9 | 3.06 |
| 250/225 | 70.067.2522.17 | 250/225 SDR17 ISO S-8 | 250 | 225 | 14,8 | 312 | 13,4 | 3.36 |
| 280/250 | 70.067.2825.17 | 280/250 SDR17 ISO S-8 | 280 | 250 | 16,6 | 355 | 14,8 | 4.52 |
| 315/200 | 70.067.3120.17 | 315/200 SDR17 ISO S-8 | 315 | 200 | 18,7 | 375 | 11,9 | 5.4 |
| 315/225 | 70.067.3122.17 | 315/225 SDR17 ISO S-8 | 315 | 225 | 18,7 | 375 | 13,4 | 5.6 |
| | | | | | | | | |

| Dimension | Code | Detail | da(OD) mm | da1(OD1) mm | s mm | L mm | s1 mm | Weight |
|-----------|----------------|-----------------------|--------------|----------------|---------|---------|----------|--------|
| 315/250 | 70.067.3125.17 | 315/250 SDR17 ISO S-8 | 315 | 250 | 18,7 | 375 | 14,8 | 5.76 |
| 25/20 | 70.067.2520.11 | 25/20 SDR11 ISO S-5 | 25 | 20 | 3 | 87 | 3 | 0.016 |
| 32/20 | 70.067.3220.11 | 32/20 SDR11 ISO S-5 | 32 | 20 | 3 | 95 | 3 | 0.022 |
| 32/25 | 70.067.3225.11 | 32/25 SDR11 ISO S-5 | 32 | 25 | 3 | 95 | 3 | 0.024 |
| 40/20 | 70.067.4020.11 | 40/20 SDR11 ISO S-5 | 40 | 20 | 3,7 | 102 | 3 | 0.032 |
| 40/25 | 70.067.4025.11 | 40/25 SDR11 ISO S-5 | 40 | 25 | 3,7 | 102 | 3 | 0.033 |
| 40/32 | 70.067.4032.11 | 40/32 SDR11 ISO S-5 | 40 | 32 | 3,7 | 101 | 3 | 0.04 |
| 50/25 | 70.067.5025.11 | 50/25 SDR11 ISO S-5 | 50 | 25 | 4,6 | 118 | 3 | 0.054 |
| 50/32 | 70.067.5032.11 | 50/32 SDR11 ISO S-5 | 50 | 32 | 4,6 | 118 | 3 | 0.06 |
| 50/40 | 70.067.5040.11 | 50/40 SDR11 ISO S-5 | 50 | 40 | 4,6 | 126 | 3,7 | 0.071 |
| 63/32 | 70.067.6332.11 | 63/32 SDR11 ISO S-5 | 63 | 32 | 5,8 | 135 | 3 | 0.098 |
| 63/40 | 70.067.6340.11 | 63/40 SDR11 ISO S-5 | 63 | 40 | 5,8 | 129 | 3,7 | 0.1 |
| 63/50 | 70.067.6350.11 | 63/50 SDR11 ISO S-5 | 63 | 50 | 5,8 | 148 | 4,6 | 0.134 |
| 75/50 | 70.067.7550.11 | 75/50 SDR11 ISO S-5 | 75 | 50 | 6,8 | 148 | 4,6 | 0.168 |
| 75/63 | 70.067.7563.11 | 75/63 SDR11 ISO S-5 | 75 | 63 | 6,8 | 148 | 5,8 | 0.193 |
| 90/63 | 70.067.9063.11 | 90/63 SDR11 ISO S-5 | 90 | 63 | 8,2 | 172 | 5,8 | 0.29 |
| 90/75 | 70.067.9075.11 | 90/75 SDR11 ISO S-5 | 90 | 75 | 8,2 | 163 | 6,8 | 0.293 |
| 110/40 | 70.067.1140.11 | 110/40 SDR11 ISO S-5 | 110 | 40 | 10 | 176 | 3,7 | 0.362 |
| 110/63 | 70.067.1163.11 | 110/63 SDR11 ISO S-5 | 110 | 63 | 10 | 178 | 5,8 | 0.42 |
| 110/90 | 70.067.1190.11 | 110/90 SDR11 ISO S-5 | 110 | 90 | 10 | 177 | 8,2 | 0.499 |
| 125/63 | 70.067.1263.11 | 125/63 SDR11 ISO S-5 | 125 | 63 | 11,4 | 195 | 5,8 | 0.56 |
| 125/90 | 70.067.1290.11 | 125/90 SDR11 ISO S-5 | 125 | 90 | 11,4 | 200 | 8,2 | 0.635 |
| 125/110 | 70.067.1211.11 | 125/110 SDR11 ISO S-5 | 125 | 110 | 11,4 | 200 | 10 | 0.739 |
| 140/125 | 70.067.1412.11 | 140/125 SDR11 ISO S-5 | 140 | 125 | 12,7 | 211 | 11,4 | 0.98 |
| 160/90 | 70.067.1690.11 | 160/90 SDR11 ISO S-5 | 160 | 90 | 14,6 | 217 | 8,2 | 1.05 |
| 160/110 | 70.067.1611.11 | 160/110 SDR11 ISO S-5 | 160 | 110 | 14,6 | 222 | 10 | 1.13 |
| 160/125 | 70.067.1612.11 | 160/125 SDR11 ISO S-5 | 160 | 125 | 14,6 | 231 | 11,4 | 1.27 |
| 160/140 | 70.067.1614.11 | 160/140 SDR11 ISO S-5 | 160 | 140 | 14,6 | 229 | 12,7 | 1.36 |
| 180/125 | 70.067.1812.11 | 180/125 SDR11 ISO S-5 | 180 | 125 | 16,4 | 270 | 11,4 | 1.82 |
| 180/160 | 70.067.1816.11 | 180/160 SDR11 ISO S-5 | 180 | 160 | 16,4 | 245 | 14,6 | 1.91 |
| 200/160 | 70.067.2016.11 | 200/160 SDR11 ISO S-5 | 200 | 160 | 18,2 | 252 | 14,6 | 2.27 |
| 225/160 | 70.067.2216.11 | 225/160 SDR11 ISO S-5 | 225 | 160 | 20,5 | 262 | 14,6 | 2.76 |
| 250/160 | 70.067.2516.11 | 250/160 SDR11 ISO S-5 | 250 | 160 | 22,7 | 314 | 14,6 | 3.98 |
| 250/200 | 70.067.2521.11 | 250/200 SDR11 ISO S-5 | 250 | 200 | 22,7 | 314 | 18,2 | 4.44 |
| 250/225 | 70.067.2522.11 | 250/225 SDR11 ISO S-5 | 250 | 225 | 22,7 | 315 | 20,5 | 4.74 |
| 280/250 | 70.067.2825.11 | 280/250 SDR11 ISO S-5 | 280 | 250 | 25,4 | 355 | 22,7 | 6.64 |
| 315/200 | 70.067.3120.11 | 315/200 SDR11 ISO S-5 | 315 | 200 | 28,6 | 375 | 18,2 | 7.64 |
| 315/225 | 70.067.3122.11 | 315/225 SDR11 ISO S-5 | 315 | 225 | 28,6 | 375 | 20,5 | 7.84 |
| 315/250 | 70.067.3125.11 | 315/250 SDR11 ISO S-5 | 315 | 250 | 28,6 | 375 | 22,7 | 8.32 |

| Dimension | Code | Detail | da(OD) mm | da1(OD1) mm | s mm | L mm | s1 mm | Weight |
|-----------|----------------|--------------------------|--------------|----------------|---------|---------|----------|--------|
| 110/63 | 70.067.1163.07 | 110/63 SDR7,4 ISO S-3,2 | 110 | 63 | 15,1 | 178 | 8,6 | 0.599 |
| 110/90 | 70.067.1190.07 | 110/90 SDR7,4 ISO S-3,2 | 110 | 90 | 15,1 | 178 | 12,3 | 0.715 |
| 125/63 | 70.067.1263.07 | 125/63 SDR7,4 ISO S-3,2 | 125 | 63 | 17,1 | 190 | 8,6 | 0.791 |
| 125/90 | 70.067.1290.07 | 125/90 SDR7,4 ISO S-3,2 | 125 | 90 | 17,1 | 189 | 12,3 | 0.833 |
| 125/110 | 70.067.1211.07 | 125/110 SDR7,4 ISO S-3,2 | 125 | 110 | 17,1 | 197,5 | 15,1 | 1.04 |
| 160/90 | 70.067.1690.07 | 160/90 SDR7,4 ISO S-3,2 | 160 | 90 | 21,9 | 216 | 12,3 | 1.475 |
| 160/110 | 70.067.1611.07 | 160/110 SDR7,4 ISO S-3,2 | 160 | 110 | 21,9 | 223 | 15,1 | 1.564 |
| 160/125 | 70.067.1612.07 | 160/125 SDR7,4 ISO S-3,2 | 160 | 125 | 21,9 | 228 | 17,1 | 1.79 |
| 200/160 | 70.067.2016.07 | 200/160 SDR7,4 ISO S-3,2 | 200 | 160 | 27,4 | 249 | 21,9 | 2.98 |
| 225/160 | 70.067.2216.07 | 225/160 SDR7,4 ISO S-3,2 | 225 | 160 | 30,8 | 268 | 21,9 | 3.88 |
| 250/160 | 70.067.2516.07 | 250/160 SDR7,4 ISO S-3,2 | 250 | 160 | 34,2 | 314 | 21,9 | 5.4 |
| 250/225 | 70.067.2522.07 | 250/225 SDR7,4 ISO S-3,2 | 250 | 225 | 34,2 | 312 | 30,8 | 6.6 |