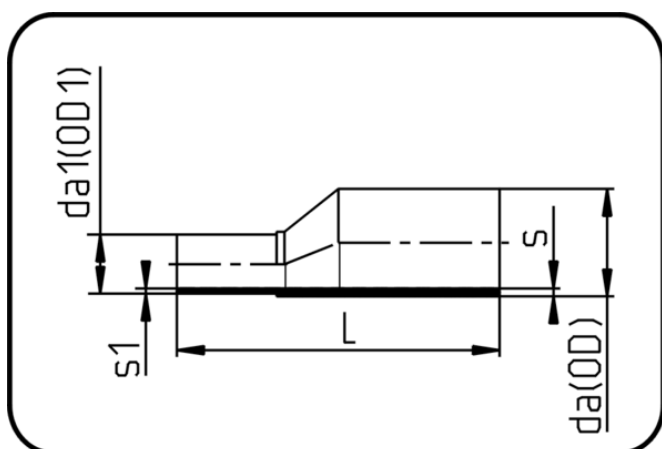


Elongated Fittings



Code: 069

- Reducer excentric
- long spigot
- injection moulded
- Butt + E-socket-welding
- PE 100-RC black

Dimension	Code	Detail	da(OD) mm	da1(OD1) mm	s mm	L mm	s1 mm	Weight
63/50	70.069.6350.17	63/50 SDR17 ISO S-8	63	50	3,8	173	3	0.11
75/50	70.069.7550.17	75/50 SDR17 ISO S-8	75	50	4,5	195	3	0.169
75/63	70.069.7563.17	75/63 SDR17 ISO S-8	75	63	4,5	195	3,8	0.18
90/63	70.069.9063.17	90/63 SDR17 ISO S-8	90	63	5,4	216	3,8	0.268
90/75	70.069.9075.17	90/75 SDR17 ISO S-8	90	75	5,4	219	4,5	0.284
110/63	70.069.1163.17	110/63 SDR17 ISO S-8	110	63	6,6	246	3,8	0.41
110/90	70.069.1190.17	110/90 SDR17 ISO S-8	110	90	6,6	241	5,4	0.46
125/63	70.069.1263.17	125/63 SDR17 ISO S-8	125	63	7,4	265	3,8	0.57
125/90	70.069.1290.17	125/90 SDR17 ISO S-8	125	90	7,4	264	5,4	0.626
125/110	70.069.1211.17	125/110 SDR17 ISO S-8	125	110	7,4	264	6,6	0.679
140/125	70.069.1412.17	140/125 SDR17 ISO S-8	140	125	8,3	285	7,4	0.935
160/90	70.069.1690.17	160/90 SDR17 ISO S-8	160	90	9,5	310	5,4	1.12
160/110	70.069.1611.17	160/110 SDR17 ISO S-8	160	110	9,5	310	6,6	1.183
160/125	70.069.1612.17	160/125 SDR17 ISO S-8	160	125	9,5	310	7,4	1.263
160/140	70.069.1614.17	160/140 SDR17 ISO S-8	160	140	9,5	309	8,3	1.3
180/90	70.069.1890.17	180/90 SDR17 ISO S-8	180	90	10,7	342	5,4	1.64
180/125	70.069.1812.17	180/125 SDR17 ISO S-8	180	125	10,7	353	7,4	1.74
180/160	70.069.1816.17	180/160 SDR17 ISO S-8	180	160	10,7	340	9,5	1.88
200/160	70.069.2016.17	200/160 SDR17 ISO S-8	200	160	11,9	373	9,5	2.34
200/180	70.069.2018.17	200/180 SDR17 ISO S-8	200	180	11,9	370	10,7	2.56
225/160	70.069.2216.17	225/160 SDR17 ISO S-8	225	160	13,4	400	9,5	3.12
225/180	70.069.2218.17	225/180 SDR17 ISO S-8	225	180	13,4	400	10,7	3.28
225/200	70.069.2220.17	225/200 SDR17 ISO S-8	225	200	13,4	400	11,9	3.52

Dimension	Code	Detail	da(OD) mm	da1(OD1) mm	s mm	L mm	s1 mm	Weight
250/200	70.069.2521.17	250/200 SDR17 ISO S-8	250	200	14,8	440	11,9	4.42
250/225	70.069.2522.17	250/225 SDR17 ISO S-8	250	225	14,8	445	13,4	4.6
25/20	70.069.2520.11	25/20 SDR11 ISO S-5	25	20	3	103	3	0.021
32/25	70.069.3225.11	32/25 SDR11 ISO S-5	32	25	3	114	3	0.029
40/25	70.069.4025.11	40/25 SDR11 ISO S-5	40	25	3,7	126	3	0.04
40/32	70.069.4032.11	40/32 SDR11 ISO S-5	40	32	3,7	125	3	0.045
50/32	70.069.5032.11	50/32 SDR11 ISO S-5	50	32	4,6	156	3	0.08
50/40	70.069.5040.11	50/40 SDR11 ISO S-5	50	40	4,6	157	3,7	0.092
63/32	70.069.6332.11	63/32 SDR11 ISO S-5	63	32	5,8	177	3	0.139
63/40	70.069.6340.11	63/40 SDR11 ISO S-5	63	40	5,8	177	3,7	0.146
63/50	70.069.6350.11	63/50 SDR11 ISO S-5	63	50	5,8	177	4,6	0.156
75/50	70.069.7550.11	75/50 SDR11 ISO S-5	75	50	6,8	195	4,6	0.23
75/63	70.069.7563.11	75/63 SDR11 ISO S-5	75	63	6,8	197	5,8	0.255
90/63	70.069.9063.11	90/63 SDR11 ISO S-5	90	63	8,2	213	5,8	0.38
90/75	70.069.9075.11	90/75 SDR11 ISO S-5	90	75	8,2	214	6,8	0.402
110/63	70.069.1163.11	110/63 SDR11 ISO S-5	110	63	10	244	5,8	0.588
110/90	70.069.1190.11	110/90 SDR11 ISO S-5	110	90	10	244	8,2	0.666
125/63	70.069.1263.11	125/63 SDR11 ISO S-5	125	63	11,4	268	5,8	0.82
125/90	70.069.1290.11	125/90 SDR11 ISO S-5	125	90	11,4	265	8,2	0.91
125/110	70.069.1211.11	125/110 SDR11 ISO S-5	125	110	11,4	260	10	0.979
140/125	70.069.1412.11	140/125 SDR11 ISO S-5	140	125	12,7	283	11,4	1.32
160/90	70.069.1690.11	160/90 SDR11 ISO S-5	160	90	14,6	309	8,2	1.52
160/110	70.069.1611.11	160/110 SDR11 ISO S-5	160	110	14,6	305	10	1.66
160/125	70.069.1612.11	160/125 SDR11 ISO S-5	160	125	14,6	309	11,4	1.75
160/140	70.069.1614.11	160/140 SDR11 ISO S-5	160	140	14,6	308	12,7	1.88
180/90	70.069.1890.11	180/90 SDR11 ISO S-5	180	90	16,4	348	8,2	2.26
180/125	70.069.1812.11	180/125 SDR11 ISO S-5	180	125	16,4	345	11,4	2.456
180/160	70.069.1816.11	180/160 SDR11 ISO S-5	180	160	16,4	345	14,6	2.78
200/160	70.069.2016.11	200/160 SDR11 ISO S-5	200	160	18,2	373	14,6	3.4
200/180	70.069.2018.11	200/180 SDR11 ISO S-5	200	180	18,2	373	16,4	3.66
225/160	70.069.2216.11	225/160 SDR11 ISO S-5	225	160	20,5	402	14,6	4.37
225/180	70.069.2218.11	225/180 SDR11 ISO S-5	225	180	20,5	403	16,4	4.62
225/200	70.069.2220.11	225/200 SDR11 ISO S-5	225	200	20,5	403	18,2	4.95
250/200	70.069.2521.11	250/200 SDR11 ISO S-5	250	200	22,7	440	18,2	6.28
250/225	70.069.2522.11	250/225 SDR11 ISO S-5	250	225	22,7	440	20,5	6.84