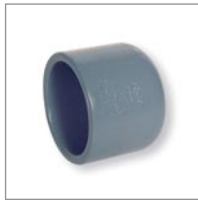
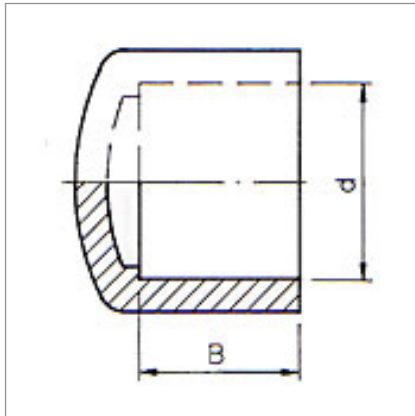


## PVCU Plain Fittings MM Sizes Industrial Range Cap



Size (d)	Code	A	B	PN	Approx Wt. (grams)
12	647-012	18.0	12.0	16	
16	647-016	24.0	14.0	16	
20	647-020	25.0	16.0	16	
25	647-025	29.0	19.0	16	
32	647-032	33.0	22.0	16	
40	647-040	40.0	26.0	16	
50	647-050	47.0	31.0	16	
63	647-063	57.0	38.0	16	
75	647-075	67.0	44.0	16	
90	647-090	77.0	51.0	16	
110	647-110	95.0	61.0	16	
125	647-125	103.0	69.0	16	
140	647-140*	118.0	76.0	16	
160	647-160*	131.0	86.0	16	
200	647-200*	170.0	107.0	10	
225	647-225*	185.0	119.0	10	
250	647-250*	205.0	132.0	10	
280	647-280*	230.0	147.0	10	
315	647-315*	255.0	165.0	10	

\* Maximum pressure 10 bar

Please note: This information is based on current manufacturers details, and is subject to change without notification.