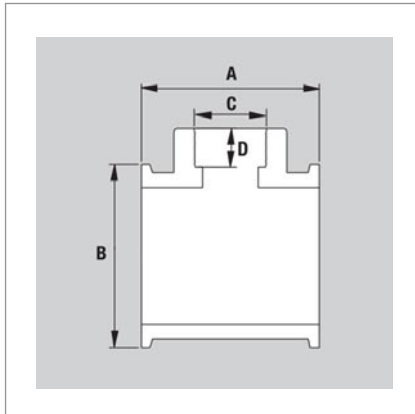


# PVCU

## Netvitc Clamp System - MM Sizes

### Adaptor Tee 90°

Without Clamps - BSP Female Branch



Size	Code	A	B	C	D	Approx Wt. (grams)
90-2"	1N477	140	121	2"	38	810
110-1"	1N478	140	144	1"	21	895
110-1 1/4"	1N479	140	144	1 1/4"	23	925
110-1 1/2"	1N480	140	144	1 1/2"	31	990
110-2"	1N481	140	144	2"	38	1,065

Please note: This information is based on current manufacturers details, and is subject to change without notification.