

Chlorinated Polyvinyl Chloride (PVC-C) is a modified PVC with additional high temperature strength. It has been developed to handle hot, corrosive liquids at working temperatures up to 100°C, whilst offering the ease of installation of cold solvent welded jointing.

PVC-C is inert to many mineral acids, bases, salts, paraffinic hydrocarbons, halogens and alcohols. It will not support combustion and is rated as self extinguishing. The low thermal conductivity of the material reduces moisture condensation on water lines, and will maintain the temperature of fluids with minimal insulation.

With a similar working temperature range to polypropylene, PVC-C has greater rigidity and lower thermal expansion, making it particularly suitable for above ground process pipework.

## application guide

- ☒ Temperature range 5°C to 100°C
- ☒ Good mechanical strength
- ☒ Low thermal conductivity
- ☒ Odourless and tasteless
- ☒ Rigid pipes are suitable for above ground use
- ☒ Resistant to many inorganic chemicals
- ☒ Threading possible
- ☒ Sizes from 1/4" to 18" and 16mm to 160mm
- ☒ No special jointing tools required
- ☒ Non flammable and self extinguishing

- ☐ Not resistant to organic solvents

## standards and approvals

### Inch Sizes:

Pipe	: ASTM F-441
Plain Fittings	: ASTM F-439
Threaded fittings	: ASTM F-437
PVC-C material	: ASTM D-1784

### Metric Sizes:

Pipe	: DIN 8079
Pipe quality & test	: DIN 8080
Plain Fittings	: DIN 8063
Threaded fittings	: BS21/DIN 2999/ISO7

PVC-C pipes and fittings are WRAS listed for use in contact with cold potable water.

## section guide

Pipe - Inch Size	146
Solvent Cement, Primer, Cleaner	147
Plain Fittings - Inch Size	148
Adaptor Fittings - Inch Size	153
Saddles - Inch Size	156
Threaded Fittings - Inch Size	158
Flanges - Inch Size	160
Valves - Inch Size	
Ball Valve, True Union	162
Ball Valve Brackets, True Union	164
Ball Valve, T-Port & L-Port	166
Gate Valve	168
Butterfly Valve	169
Diaphragm Valve	170
Needle Valve	171
Ball Valve, Laboratory	172
Globe Valve	172
Y-Pattern Valve	173
Non-Return Valve, Check	174
Basket Strainer	176
Y-Strainer	177
Pipe - mm Size	178
Plain Fittings - mm Size	179
Adaptor Fittings - mm Size	181
Flanges - mm Size	182
Valves - mm Size	
Ball Valves	183
Diaphragm Valve	184
Strainer	185
Check Valve	185

## about: pvc-c

Post-chlorinated Polyvinylchloride (PVC-C) is a highly versatile material that is used for both pressure and drainage piping systems for above and below ground applications. It is a rigid thermoplastic material with good tensile, flexural and mechanical strength, low moisture absorption, good flammability characteristics, exceptional dimensional stability and good tenacity.

PVC-C also has excellent chemical resistance across its operating temperature range of 0°C to 90°C, with a broad band of operating pressures. In addition, because of its long-term strength characteristics, high stiffness and cost effectiveness, PVC-C systems are suitable for a wide diversity of thermoplastic piping installations.

PVC-C systems feature a broad range of pipe sizes, fitting configurations, valve choices and ancillary items.

PVC-C piping systems are joined by solvent cement welding, whilst transition joints can be made using flanges, threaded connections, mechanical fittings, and compression fittings.

IPS supplies a comprehensive range of PVC-C piping systems in both inch and metric dimensions, according to ASTM and DIN standards. Systems are available in inch sizes up to 24" for use as both pressure and ventilation piping systems, and in metric sizes up to 160mm.



### General properties of PVC-C

PVC-C is thermally stable in the temperature range 5°C to 100°C, however at low temperatures the impact strength of PVC-C decreases. It is therefore not recommended for use at very low temperatures unless there is no likelihood of the piping materials being disturbed or subjected to impact damage. PVC-C is free from toxic metals thus ensuring that it is physiologically harmless for drinking water and foodstuffs applications.

Some important advantages of PVC-C are:

- Low Specific weight 1.5 g/cm<sup>3</sup>
- Wide range of applications
- Good chemical and corrosion resistance
- Safe for potable water applications
- Low friction loss
- Self extinguishing
- High mechanical strength
- Low coefficient of thermal expansion
- Rigid and requires less support

Properties of PVC-C (Average values)	
Property	Value
Density	1.55 g/cm <sup>3</sup>
Tensile Strength	55 N/mm <sup>2</sup>
Elongation at Break	3%
Impact Strength	80 J/m (23°C)
Modulus of Elasticity (Young's Modulus)	2500 N/mm <sup>2</sup>
Coefficient of Linear Expansion	0.07 mm/m°C
Maximum Operating Temperature	90°C
Minimum Operating Temperature	0°C
Vicat Softening Point	> 105°C (VST/B 50)
Water Absorption	0.03%
Surface Resistance	Approx. 10 <sup>13</sup> Ω
Thermal Conductivity	0.066 W/m · K
Flammability	V-0 UL94
Colour	Light Grey

### Characteristics

#### Chemical resistance

PVC-C has excellent chemical resistance to common industrial chemicals, such as acids, bases and salt solutions. Resistance to sodium hypochlorite solutions is also very good. PVC-C is not resistant to aromatic and chlorinated hydrocarbons, solvents, esters and ketones. The chemical resistance of PVC-C should be checked with our technical department for applications involving varnish, oils or fats, and PVC-C is not recommended for use with compressed air or gases.

#### Chemical resistance of solvent cement welded joints

The chemical resistance of the joints in a solvent welded piping system are the same as the material itself. However, PVC-C solvent welded joints in systems handling the following chemicals can be degraded and require the use of Weld On 724 solvent cement to ensure chemical compatibility:

Hydrochloric Acid 25%+ concentration  
 Nitric Acid 20%+ concentration  
 Sulphuric Acid 70%+ concentration  
 Hydrofluoric Acid in any concentration

#### Weathering resistance

With the use of additives such as ultraviolet absorbers, PVC-C systems display excellent weathering resistance to the long-term effects of sunlight, wind and rain. Over time, grey PVC-C will lose some of its colour because of exposure to UV light and it will have slightly reduced impact strength. In extreme cases, the use of insulation or an application of UV absorbent coating such as AGRU Coat or the use of a water based paint will help to minimise the effects of solar radiation.

#### Electrical characteristics

PVC-C is non-conductive, therefore systems will remain free from electrolytic corrosion. Precautions should be taken to avoid static discharge should any part of a PVC-C piping system pass through an area where explosive gases may be present.

#### Physiological characteristics

PVC-C piping systems from IPS are free from lead, cadmium or other poisonous heavy metals. They are suitable for use in contact with cold potable water, and are WRAS listed for this application.

## Pressure ratings for pvc-c systems

### Maximum continuous pressure ratings

Pipes, fittings and valves are designed to operate continuously for 50 years at their maximum rated pressure at 20°C as follows, unless otherwise stated.

#### Inch sizes - ASTM Standard

PVC-C piping systems manufactured in accordance with ASTM requirements use a 'schedule' system of pressure ratings. Pipes are produced in two different 'schedules', 40 & 80. Under this system the pressure rating of the pipe changes according to the pipe nominal bore size. Reference should be made to the pipe availability guide to verify the pressure ratings available for the sizes required.

Unlike pipe, there is presently no industry standard that specifies a working pressure for fittings. Moulded pipe fittings are manufactured to meet the minimum burst pressure requirements to that of the pipe. In common with the pipe, the pressure rating of the fittings decreases as the nominal pipe sizes increases. The advisory pressure ratings for ASTM fittings is as follows:-

Moulded Fittings	Size Range	Max. Operating Pressure
	1/4" to 8"	16 Bar
	10" to 12"	10 Bar
Fabricated Fittings	4" to 16"	10 Bar
SR Threaded Fittings	1/4" to 4"	16 Bar
	6"	12 Bar
Unreinforced Threaded Fittings	1/4" to 6"	10 Bar

#### Metric sizes

The pressure ratings for PVC-C pipes according to DIN 8079 and PVC-C fittings according to DIN 8063 are defined by the 'nominal pressure' method, **whereby** pipes, fittings and valves are grouped together according to a single nominal pressure rating. The PN rating is the maximum permitted operational pressure in bars calculated at 20°C, for example PN6 indicates a maximum working pressure of 6 bars. According to this method the pressure ratings of metric sized PVC-C pipes and fittings according to the nominal pressure system is as follows:-

Pipe	Size Range	Max. Operating Pressure
PN16	16mm to 110mm	16 Bar
PN10	160mm	10 Bar
Fittings PN16	16mm to 160mm	16 Bar
Threaded Fittings	3/8" to 2"	16 Bar

# solvent cement welding of pvc-c

3

## Making a solvent welded joint - joint preparation

- ① Bring the pipes, fittings and solvent cements to the same temperature condition. Ensure that the items to be joined are clean and dry prior to use. Inspect the components for any signs of damage or irregularities. Do not use items that appear not to be correct.
- ② Cut the pipe ends squarely using tool suitable for plastic pipe. A wheel-type cutter is ideal. If a saw is used, a mitre box is recommended to ensure a square cut. Power saws may be used with care.
- ③ Using a chamfering tool cut a 10° to 15° chamfer on the outside of the pipe. This will help ease the pipe into the fitting and minimise the risk of cement being wiped from the fitting during assembly.
- ④ Remove the internal burr from the pipe, and clean up any cutting debris or swarf.
- ⑤ Check the dry fit by entering the pipe into the fitting. The pipe should enter the socket of the fitting to between  $\frac{1}{3}$  to  $\frac{3}{4}$  of its depth. This is regarded as a good "interference fit". If the pipe bottoms in the fitting with little interference, extra solvent cement should be used during assembly.
- ⑥ Measure the insertion depth of the socket and mark it on the pipe end. This makes it possible to verify later that the pipe has completely "bottomed out" in the fitting.
- ⑦ Open cans of cleaner, primer and cement ready for use and loosely replace lids to minimise the evaporation of the solvents. Check that the products are in good condition and not "gelled". Cements that are gelled must not be used. Never thin cements.
- ⑧ If needed, remove dirt with C-65 cleaner applied using a clean, lint-free cloth or paper towel.
- ⑨ Using a natural bristle brush or an applicator, apply P70 primer to the inside of the fitting socket then to the outside of the pipe, then apply a further coat to the fitting socket. The primer should be worked into the surfaces of the material. Avoid 'puddling' the primer in the fitting socket. Do not apply with a rag.
- ⑩ **While the primer is still wet**, apply the solvent cement using a natural bristle brush of the correct diameter, or a correctly sized applicator. The solvent cement coating on the pipe end should be liberally yet evenly applied to a distance equal to the depth of the fitting socket. A medium even coat should be made on the fitting socket surface. For diameters 4" (100mm) and above, or if the fit was loose, a second coat should be applied to the pipe.
- ⑪ **While both surfaces are still wet**, insert the pipe into the fitting until the pipe bottoms out fully in the socket. Check that alignment is correct. Hold the joint to prevent pull out for around 20 to 30 seconds (larger sizes may require more time). A bead of solvent cement should be evident around the pipe and fitting juncture. If the bead is not continuous it may indicate that insufficient solvent cement was applied. If this is the case the joint must be cut out, discarded and begun again with new product. Excess solvent cement should be removed from the mouth of the socket using a clean, dry cloth. Replace lids on cleaner, primer and cement cans to prevent the solvent from evaporating.
- ⑫ Handle the newly assembled joint with care until the initial set time has elapsed (see set and cure times table). Following the initial set period the assembly can be handled carefully, avoiding stresses on the joint. **All solvent cemented joints must be allowed to cure fully prior to pressure testing.**



Chamfering the pipe



Removing the internal burr



Measuring the insertion depth



Marking the pipe end



Applying the primer to the pipe



Brush applying cement to the fitting



Brush applying cement to the pipe



Assembly



Wiping away excess cement



# solvent cement welding of pvc-c

3

## Set and cure times

The initial set between the pipe and the fitting takes place in a matter of minutes, and joints can therefore safely be handled in a very short time. However, the joint needs to cure before it can be used as part of a pressurised assembly. The time taken to achieve this can depend upon a number of factors, including the tightness of fit as well as the ambient temperature and humidity. In general terms, joints will cure faster on tighter fitting assemblies in warmer, drier conditions, whereas looser fit joints made in cooler and/or humid conditions will cure slower.

As a general guide it is recommended that (wherever possible) joints be left for 24 hours to cure before pressure is applied. However, where this is not possible, consideration may be given to the above factors before determining when joints are put into service. Given average conditions and a working temperature not exceeding 20°C, a safe guide is to allow a cure time of not less than 1 hour for each bar of working pressure for pipe sizes up to 4" (100mm), and 1½ hours for each bar of working pressure for larger sizes.

## Large diameter jointing

Solvent cement jointing on pipe sizes 6" (DN 150mm) and larger is a two-person operation. To ensure that primers and solvent cements are applied at the correct speed they should be simultaneously applied to both pipe and fitting. Applying a thorough coating of cement is critical at these sizes both to ensure a good weld and to ease the pipe into the fitting.

For sizes 10" and larger it is recommended to use a ratchet driven pipe puller to ensure that the pipe fully penetrates the fitting. These tools may be hired if required.

## Solvent welding of dissimilar materials

As a general guide, solvent welded joints between dissimilar materials are not recommended. Where possible, a mechanical transition joint should be used, such as a union, flange or threaded connection.

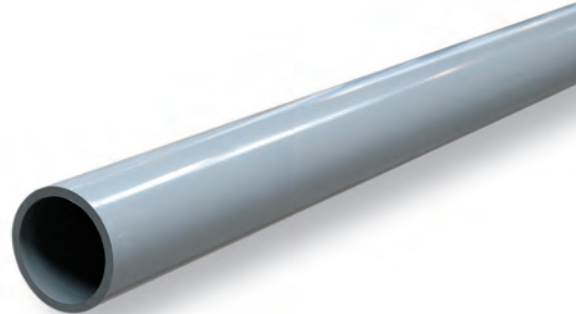
If a solvent welded joint is unavoidable, it may (depending upon the conditions) be possible to make a reliable joint provided that a suitable solvent cement is used:

Materials To Be Joined	Recommended Solvent Cement
PVC-C to PVC-U	Weld-On 724
PVC-C to ABS	Weld-On 724



**Please note that in all cases we recommend contact with our technical department who will be able to provide assistance with specific applications and on recommended jointing methods.**





### Corzan Pipe Schedule 40

3 & 6 metre lengths. Threading not recommended.

Size	Max. Pressure (bar)	Weight/m	O.D. (mm)	Min. Wall (mm)	Code	Price/m
¼	53	0.11	13.8	2.2	400-002C	13.64
⅜	42	0.22	17.2	2.3	400-003C	17.38
½	41	0.27	21.4	2.8	400-005C	10.55
¾	33	0.36	26.5	2.9	400-007C	13.81
1	31	0.52	33.6	3.4	400-010C	20.40
1¼	25	0.71	42.2	3.6	400-012C	27.46
1½	23	0.85	48.3	3.7	400-015C	32.94
2	20	1.13	60.3	3.9	400-020C	43.93
2½	21	1.79	73.0	5.2	400-025C	69.29
3	18	2.34	88.9	5.5	400-030C	90.95
4	15	3.34	114.3	6.0	400-040C	121.36
6	12	5.88	168.3	7.1	400-060C	238.30
8	11	8.88	219.1	8.2	400-080C	409.22
10	10	12.61	273.1	9.3	400-100C	699.29
12	9	16.66	323.9	10.3	400-120C	925.11
14	9	20.75	355.6	11.1	400-140C	1455.09
16	9	27.08	406.4	12.7	400-160C	1900.41

Please note that a transportation surcharge may be applied on pipe diameters 10" or larger - please enquire for details.

### Corzan Pipe Schedule 80

3 & 6 metre lengths.

Size	Max. Pressure (bar)	Weight/m	O.D. (mm)	Min. Wall (mm)	Code	Price/m
¼	78	0.17	13.8	3.0	800-002C	15.85
⅜	63	0.23	17.2	3.2	800-003C	21.82
½	59	0.34	21.4	3.7	800-005C	12.22
¾	48	0.45	26.5	3.9	800-007C	16.63
1	43	0.67	33.6	4.6	800-010C	24.47
1¼	36	0.92	42.2	4.9	800-012C	33.54
1½	32	1.12	48.3	5.1	800-015C	40.78
2	28	1.55	60.3	5.5	800-020C	56.49
2½	29	2.36	73.0	7.0	800-025C	85.92
3	26	3.17	88.9	7.6	800-030C	115.39
4	22	4.63	114.3	8.6	800-040C	166.19
6	19	8.84	168.3	11.0	800-060C	329.27
8	17	13.49	219.1	12.7	800-080C	573.89
10	16	20.02	273.1	15.1	800-100C	1039.58
12	16	27.52	323.9	17.5	800-120C	1428.43
14	15	33.13	355.6	19.1	800-140C	1903.51
16	15	42.60	406.4	21.4	800-160C	2976.00
18	15	55.79	457.2	23.8	800-180C	3549.84

Please note that a transportation surcharge may be applied on pipe diameters 10" or larger - please enquire for details.

**FM4910 Corzan Duct**

A range of flame retardent duct pipe and fittings is available to meet the requirements of FM4910. Please enquire for details.

## Temperature De-Rating Factors

Pressure ratings for Harvel PVC-C pipework systems are always quoted at 20°C. As working temperature increases, the maximum working pressure decreases by the factor indicated.

Working Temperature (°C)	Pressure De-Rating Factor
20	1.00
30	0.92
40	0.81
50	0.65
60	0.50
70	0.40
80*	0.26
90*	0.21

\* For continuous use at these temperatures, consult our Customer Services Department.

## How much Solvent Cement?

Estimate the number of joints per size, then use this table to calculate how much solvent cement to order.

We always recommend the use of Primer when solvent welding PVC-C. Primer is brush applied after preparation and cleaning of the joint surfaces, prior to the application of solvent cement.

inch dia	mm dia	joints per litre	
1/4 - 1/2	10-20	160	Allow approximately one half the cement quantity in C-65 cleaner and P-70 primer.
3/4 - 1	25-30	120	
1 1/4 - 2	40-63	80	
2 1/2 - 3	75-90	60	Detailed jointing instructions are available on request.
4	110	40	
5-6	140-160	24	
8	-	12	
10	-	4	
12	-	2	



## What size Brush?

It is important to use the correct size brush to apply solvent cement.

Pipe Size	Brush Size
1/4-1	8mm round
1 1/4-2	25 x 3mm flat
2 1/2-5	50 x 10mm flat
6-12	75 x 10mm flat



## PVC-C Solvent Cement

Size	Code	Price
500ml tin	724-301	43.02

## P-70 Primer

Size	Code	Price
Pint (473ml) tin	770-300	33.40
Quart (946ml) tin	770-200	53.63

## Cleaning Fluid

Size	Code	Price
473ml	765-300	18.31

## Brushes

Size	Code	Price
4mm round	L151/4R	1.93
8mm round	L151/8R	2.71
25x10mm flat	565/1	2.98
50x10mm flat	565/2	6.83
75x10mm flat	565/3	17.96

## Applicators and Accessories

Special applicators make large size jointing much easier

Description	Code	Price
3" long roller for pipe sizes 3" to 6". Fits quart size tins	3020	19.92
7" long roller for pipe sizes 6"+. Fits gallon size tin	7020	24.41
Swab applicator for pipe sizes 6"+. Fits gallon size tin	4020	24.41
Empty gallon size tin for use with applicators	MT-648	23.28

All WELD-ON cements, primers and cleaning fluids are now LOW VOC

## Pipework Support

PVC-C pipework requires more support than for metallic systems. As working temperature increases, the distance between supports is reduced. For temperatures in excess of 80°C, please enquire.

### SCHEDULE 40

Pipe Size	Support Centres/m			
	20°C	40°C	60°C	80°C
1/2	1.5	1.4	1.2	0.7
3/4	1.5	1.5	1.2	0.7
1	1.7	1.7	1.4	0.7
1 1/4	1.7	1.7	1.5	0.9
1 1/2	1.8	1.8	1.5	0.9
2	1.8	1.8	1.5	0.9
2 1/2	2.1	2.1	1.8	1.0
3	2.1	2.1	1.8	1.0
4	2.3	2.3	2.0	1.2
6	2.6	2.5	2.1	1.4
8	2.9	2.8	2.3	1.5
10	3.2	3.0	2.5	1.7
12	3.5	3.2	2.6	1.8

### SCHEDULE 80

Pipe Size	Support Centres/m			
	20°C	40°C	60°C	80°C
1/2	1.7	1.5	1.4	0.7
3/4	1.7	1.7	1.4	0.7
1	1.8	1.8	1.5	0.9
1 1/4	2.0	1.8	1.7	0.9
1 1/2	2.1	2.0	1.7	1.0
2	2.1	2.1	1.8	1.0
2 1/2	2.5	2.3	2.0	1.2
3	2.5	2.5	2.1	1.2
4	2.7	2.7	2.3	1.4
6	3.1	2.9	2.5	1.5
8	3.4	3.2	2.7	1.7
10	3.5	3.4	2.9	1.8
12	3.8	3.7	3.2	2.0

## Tee 90°



Size	Code	Price
1/4	801-002C	12.23
3/8	801-003C	12.58
1/2	801-005C	13.05
3/4	801-007C	14.00
1	801-010C	17.92
1 1/4	801-012C	35.55
1 1/2	801-015C	42.07
2	801-020C	55.88
2 1/2	801-025C	118.96
3	801-030C	128.40
4	801-040C	173.67
6	801-060C	474.14
8	801-080C	1241.61
10	801-100C	2587.48
12	801-120C	3965.96
14	801-140CF	12549.62
16	801-160CF	17926.57

## Reducing Tee 90°



Size	Code	Price
3/4x1/2	801-101C	28.38
1x1/2	801-130C	32.64
1x3/4	801-131C	32.64
1 1/4x1x1	801-158C	41.70
1 1/4x1 1/4	801-159C	42.07
1 1/4x1 1/4x3/2	801-166C	92.51
1 1/4x1 1/4x3/4	801-167C	92.51
1 1/4x1	801-168C	62.88
1 1/2x1 1/4	801-202C	65.53
1 1/2x1/2	801-209C	91.56
1 1/2x3/4	801-210C	67.75
1 1/2x1	801-211C	67.16
1 1/2x1 1/4	801-212C	82.49
2x1/2	801-247C	80.82
2x3/4	801-248C	81.14
2x1	801-249C	80.13
2x1 1/4	801-250C	135.88
2x1 1/2	801-251C	82.78
2 1/2x1/2	801-287C	126.77
2 1/2x3/4	801-288C	126.77
2 1/2x1	801-289C	95.47
2 1/2x1 1/4	801-290C	96.47
2 1/2x1 1/2	801-291C	98.12
2 1/2x2	801-292C	101.38
3x1/2	801-333C	247.64
3x3/4	801-334C	247.64
3x1	801-335C	200.07
3x1 1/4	801-336C	239.87
3x1 1/2	801-337C	200.06
3x2	801-338C	169.81
3x2 1/2	801-339C	173.40
4x1/2	801-415C	304.02
4x3/4	801-416C	304.01
4x1	801-417C	304.01
4x1 1/4	801-418C	304.01
4x1 1/2	801-419C	304.01
4x2	801-420C	217.71
4x3	801-422C	225.82
6x1	801-525C	870.12
6x1 1/4	801-526C	870.12
6x1 1/2	801-527C	870.12
6x2	801-528C	645.22
6x3	801-530C	666.40
6x4	801-532C	596.37
8x2	801-578C	1191.09
8x3	801-580C	1197.58
8x4	801-582C	1290.49
8x6	801-585C	1075.38
10x2	801-621CF	1357.30
10x3	801-623C	1974.87
10x4	801-624C	1984.62
10x6	801-626C	2994.82
10x8	801-628C	2942.69
12x2	801-661CF	2284.41
12x3	801-663CF	2515.80
12x4	801-664CF	2620.04
12x6	801-666C	3333.77
12x8	801-668C	4663.36
12x10	801-670C	4275.56

## Tee 45° (Wye)



Size	Code	Price
1/2	875-005C	14.99
3/4	875-007C	16.27
1	875-010C	27.57
1 1/4	875-012C	42.07
1 1/2	875-015C	46.93
2	875-020C	125.15
3	875-030C	495.35
4	875-040C	544.22
6	875-060C	814.71
8	875-080C	1457.48
10	875-100CF	3887.75
12	875-120CF	5546.49
14	875-140CF	20132.79
16	875-160CF	22612.78

## Reducing Tee 45° (Wye)



Size	Code	Price
4x4x2	875-420C	642.00
6x6x4	875-532C	628.98
8x2	875-578CF	1569.13
8x3	875-580CF	1635.94
8x4	875-582C	1925.58
8x8x6	875-585C	1687.64
10x2	875-621CF	1632.67
10x3	875-623CF	1701.11
10x4	875-624CF	2339.82
10x6	875-626C	2675.48
10x8	875-628CF	3190.36
12x2	875-661CF	3184.91
12x3	875-663CF	3346.07
12x4	875-664CF	3816.88
12x6	875-666CF	3970.60
12x8	875-668CF	3992.00
12x10	875-670CF	4917.52

## Street Tee 90°



Size	Code	Price
1/2	844-005C	15.80
3/4	844-007C	16.61
1	844-010C	21.20
1 1/4	844-012C	42.70
1 1/2	844-015C	49.83
2	844-020C	57.99

## Double Wye



Size	Code	Price
2	876-020CF	943.42
3	876-030CF	1202.49
3x2	876-338C	723.46
4	876-040CF	2062.82
6	876-060CF	3594.47
8	876-080CF	6445.84
10	876-100CF	6993.36
12	876-120CF	10480.25

Maximum pressure 6 bar





## Cross



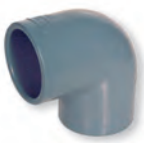
Size	Code	Price
1/4	820-002C	50.87
1/2	820-005C	52.41
3/4	820-007C	55.38
1	820-010C	63.54
1 1/4	820-012C	69.74
1 1/2	820-015C	77.26
2	820-020C	103.97
2 1/2	820-025C	140.82
3	820-030C	184.44
4	820-040C	327.52
6	820-060CF	1543.01
8	820-080CF	2910.13
10	820-100CF	4347.19
12	820-120CF	6664.28
14	820-140CF	18343.75
16	820-160CF	21863.21

## Reducing Cross



Size	Code	Price
4x2	820-420CF	584.96
6x2	820-528CF	1341.03
6x3	820-530CF	1520.22
6x4	820-532CF	1569.13
8x2	820-578CF	1733.67
8x3	820-580CF	1870.53
8x4	820-582CF	1776.06
8x6	820-585CF	2333.30
10x2	820-621CF	2154.07
10x3	820-623CF	2346.33
10x4	820-624CF	2463.64
10x6	820-626CF	2945.94
10x8	820-628CF	3545.53
12x2	820-661CF	2714.57
12x3	820-663CF	3046.96
12x4	820-664CF	3249.02
12x6	820-666CF	3662.89
12x8	820-668CF	4265.76
12x10	820-670CF	5269.46

## Elbow 90°



Size	Code	Price
1/4	806-002C	13.21
3/8	806-003C	13.39
1/2	806-005C	6.06
3/4	806-007C	7.83
1	806-010C	12.39
1 1/4	806-012C	25.94
1 1/2	806-015C	30.94
2	806-020C	36.79
2 1/2	806-025C	80.82
3	806-030C	95.47
4	806-040C	171.76
6	806-060C	379.64
8	806-080C	868.48
10	806-100C	2330.01
12	806-120C	3216.43
14	806-140CF	11950.01
16	806-160CF	16313.52

## Short Radius Bend 90°



Size	Code	Price
1/2	806-005SC	10.71
3/4	806-007SC	14.02
1	806-010SC	22.46
1 1/4	806-012SC	30.17
1 1/2	806-015SC	33.24
2	806-020SC	42.38

## Street Elbow 90°



Size	Code	Price
1/2	809-005C	7.15
3/4	809-007C	9.29
1	809-010C	14.84
1 1/4	809-012C	30.67
1 1/2	809-015C	35.19
2	809-020C	43.69
3	809-030C	127.11
4	809-040C	237.57
6	809-060C	501.81
8	809-080C	1150.37
10	809-100C	3640.10
12	809-120C	5002.26

## Elbow 45°



Size	Code	Price
1/4	817-002C	19.43
3/8	817-003C	19.56
1/2	817-005C	6.85
3/4	817-007C	9.93
1	817-010C	15.79
1 1/4	817-012C	30.17
1 1/2	817-015C	34.23
2	817-020C	37.81
2 1/2	817-025C	74.99
3	817-030C	96.77
4	817-040C	141.14
6	817-060C	417.12
8	817-080C	852.21
10	817-100C	1776.06
12	817-120C	3108.88

## Street Elbow 45°



Size	Code	Price
1/2	827-005C	6.85
3/4	827-007C	9.93
1	827-010C	15.80
1 1/4	827-012C	30.17
1 1/2	827-015C	34.23
2	827-020C	37.81
3	827-030C	87.65
4	827-040C	137.50
6	827-060C	413.87
8	827-080C	847.30
10	827-100C	2189.88
12	827-120C	3848.62
14	827-140CF	8511.99
16	827-160CF	10887.64



### Pressure Ratings

Items marked \* carry a maximum pressure rating of 10 bar at 20°C.

## Elbow 30°



Size	Code	Price
2	815-020CF	168.54
3	815-030CF	246.21
4	815-040CF	321.53
6	815-060C	521.00
8	815-080CF	1143.83
10	815-100CF	1883.59
12	815-120CF	2414.75
14	815-140CF	5500.83
16	815-160CF	7742.90

## Elbow 22½°



Size	Code	Price
½	816-005C	9.63
¾	816-007C	14.00
1	816-010C	22.16
1¼	816-012C	43.34
1½	816-015C	44.67
2	816-020C	48.23
3	816-030C	125.47
4	816-040C	176.01
6	816-060C	540.98
8	816-080C	1107.99
10	816-100CF	1834.66
12	816-120CF	2453.85
14	816-140CF	5500.83
16	816-160CF	7742.90

## Street Elbow 22½°



Size	Code	Price
½	842-005C	11.06
¾	842-007C	17.08
1	842-010C	26.76
1¼	842-012C	33.54
1½	842-015C	48.23
2	842-020C	60.92

## Elbow 15°



Size	Code	Price
2	818-020CF	197.54
3	818-030CF	246.21
4	818-040CF	321.53
6	818-060CF	617.10
8	818-080CF	1039.57
10	818-100CF	1740.18
12	818-120CF	2316.99
14	818-140CF	5500.83
16	818-160CF	7742.90

## Elbow 11¼°



Size	Code	Price
2	811-020C	46.93
3	811-030C	123.21
4	811-040C	169.06
6	811-060CF	617.10
8	811-080CF	1044.46
10	811-100CF	1730.43
12	811-120CF	2316.99
14	811-140CF	5500.83
16	811-160CF	7742.90

## Socket



Size	Code	Price
¼	829-002C	13.88
⅜	829-003C	14.18
½	829-005C	6.16
¾	829-007C	8.61
1	829-010C	11.43
1¼	829-012C	17.58
1½	829-015C	22.46
2	829-020C	25.56
2½	829-025C	56.69
3	829-030C	62.58
4	829-040C	87.06
6	829-060C	203.33
8	829-080C	519.78
10	829-100C	742.97
12	829-120C	922.24
14	829-140C	1099.88
16	829-160CF	6726.15

## Reducing Socket

Concentric



Size	Code	Price
¾x½	829-101C	14.62
1x½	829-130C	21.01
1x¾	829-131C	21.01
1¼x½	829-166C	46.93
1¼x¾	829-167C	46.93
1¼x1	829-168C	47.30
1½x½	829-209C	47.30
1½x¾	829-210C	47.30
1½x1	829-211C	47.30
1½x1¼	829-212C	47.30
2x½	829-247C	62.88
2x¾	829-248C	62.88
2x1	829-249C	62.59
2x1¼	829-250C	62.59
2x1½	829-251C	62.59
2½	829-291C	84.04
2½x2	829-292C	84.04
3x1	829-335C	222.60
3x1¼	829-336C	229.40
3x1½	829-337C	229.40
3x2	829-338C	144.36
3x2½	829-339CF	328.65
4x¾	829-416C	262.34
4x1	829-417C	262.34
4x1½	829-419C	262.34
4x2	829-420C	176.62
4x3	829-422C	177.32
* 5x4	829-490CF	215.75
* 6x2	829-528CF	418.76
6x3	829-530C	530.88
6x4	829-532C	407.34
* 8x4	829-582CF	751.13
8x6	829-585C	712.06
* 10x4	829-624CF	1277.46
* 10x6	829-626CF	995.59
* 10x8	829-628CF	1572.72
* 12x4	829-664CF	3098.66
* 12x6	829-666CF	2590.77
* 12x8	829-668CF	2000.91
* 12x10	829-670CF	1127.55



## Pressure Ratings

Items marked \* carry a maximum pressure rating of 10 bar at 20°C.

## Reducing Socket

Eccentric



Size	Code	Price
3x2	829-338CFE	172.70
4x2	829-420CFE	386.17
4x3	829-422CFE	249.95
6x2	829-528CFE	780.47
6x3	829-530CFE	624.08
6x4	829-532CFE	466.03
8x4	829-582CFE	1168.26
8x6	829-585CFE	1011.89
10x4	829-624CFE	2571.17
10x6	829-626CFE	2088.88
10x8	829-628CFE	1503.95
12x6	829-666CFE	2945.94
12x8	829-668CFE	2769.98
12x10	829-670CFE	2463.64

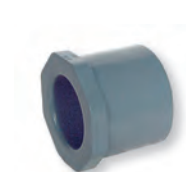
## Union

FPM O-Ring



Size	Code	Price
1/4	857-002C	35.19
3/8	857-003C	24.47
1/2	8057-005C	24.47
3/4	8057-007C	26.86
1	8057-010C	32.88
1 1/4	8057-012C	63.54
1 1/2	8057-015C	65.83
2	8057-020C	108.51
2 1/2	8057-025C	176.95
3	8057-030C	229.11
4	8057-040C	302.11
6	8057-060C	677.83

## Reducing Bush



Size	Code	Price
3/8	837-052C	11.30
1/2x1/4	837-072C	11.42
1/2x3/8	837-073C	11.42
3/4x1/2	837-101C	6.04
1x1/2	837-130C	9.45
1x3/4	837-131C	9.30
1 1/4x1/2	837-166C	24.59
1 1/4x3/4	837-167C	24.75
1 1/4x1	837-168C	24.15
1 1/2x1/2	837-209C	28.04
1 1/2x3/4	837-210C	28.51
1 1/2x1	837-211C	28.04
1 1/2x1 1/4	837-212C	27.22
2x1 1/2	837-247C	36.52
2x3/4	837-248C	37.15
2x1	837-249C	36.79
2x1 1/4	837-250C	36.79
2x1 1/2	837-251C	36.19
2 1/2x1 1/4	837-290C	43.69
2 1/2x1 1/2	837-291C	43.69
2 1/2x2	837-292C	44.67
3x1	837-335C	70.74
3x1 1/4	837-336C	70.74
3x1 1/2	837-337C	70.40
3x2	837-338C	70.40
3x2 1/2	837-339C	67.52
4x2	837-420C	82.14
4x3	837-422C	79.15
6x2	837-528C	186.06
6x3	837-530C	183.50
6x4	837-532C	181.17
8x6	837-585C	554.03
10x6	837-626C	1083.58
10x8	837-628C	1083.58
12x4	837-664C	2349.60
12x8	837-668C	1366.12
12x10	837-670CF	1366.12
14x12	837-702CF	2701.52
16x12	837-762CF	3946.44
16x14	837-764CF	3757.37

## Union

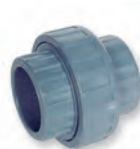
EPDM O-Ring



Size	Code	Price
1/4	897-002C	35.19
3/8	897-003C	35.19
1/2	8097-005C	24.47
3/4	8097-007C	26.52
1	8097-010C	32.44
1 1/4	8097-012C	62.88
1 1/2	8097-015C	65.17
2	8097-020C	107.23
2 1/2	8097-025C	176.62
3	8097-030C	226.48
4	8097-040C	299.17
6	8097-060C	684.36

## Adaptor Union

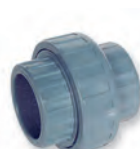
FPM O-Ring Inch x mm



Size	Code	Price
1 1/2x20	8657-020C	28.89
3/4x25	8657-025C	29.95
1x32	8657-032C	36.22
1 1/4x40	8657-040C	73.60
1 1/2x50	8657-050C	74.94
2x63	8657-063C	124.23
3x90	8657-090C	231.98
4x110	8657-110C	383.37

## Adaptor Union

EPDM O-Ring Inch x mm



Size	Code	Price
1 1/2x20	8697-020C	25.50
3/4x25	8697-025C	27.84
1x32	8697-032C	35.87
1 1/4x40	8697-040C	74.03
1 1/2x50	8697-050C	76.59
2x63	8697-063C	122.67
3x90	8697-090C	148.09
4x110	8697-110C	176.99

## Need advice?

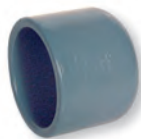
Our expert team are here to help.  
Call our freephone:

**0800 975 79 71**

Or from outside of the UK:  
+44 191 521 3111



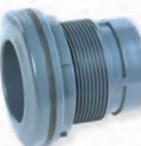
## Cap



Size	Code	Price
1/4	847-002C	9.29
3/8	847-003C	9.45
1/2	847-005C	8.61
3/4	847-007C	12.39
1	847-010C	21.84
1 1/4	847-012C	24.59
1 1/2	847-015C	24.59
2	847-020C	28.18
2 1/2	847-025C	86.69
3	847-030C	98.43
4	847-040C	106.87
6	847-060C	335.63
8	847-080C	972.74
10	847-100CF	1554.47
12	847-120CF	1720.64
14	847-140CF	6100.49
16	847-160CF	8971.42

## Tank Adaptor

Plain Socket x Plain  
Socket  
EPDM Gasket



Size	Code	Price
1/4	8170E-002C	86.69
3/8	8170E-003C	86.69
1/2	8170E-005C	87.31
3/4	8170E-007C	98.12
1	8170E-010C	114.73
1 1/4	8170E-012C	144.71
1 1/2	8170E-015C	155.47
2	8170E-020C	222.60
3	8170E-030C	524.38
4	8170E-040C	870.54
6	8170E-060C	1574.98
8	8170E-080C	3734.58

## Tank Adaptor

Plain Socket x Plain  
Socket  
FPM Gasket



Size	Code	Price
1/4	8170V-002C	113.38
3/8	8170V-003C	113.38
1/2	8170V-005C	114.06
3/4	8170V-007C	131.32
1	8170V-010C	152.49
1 1/4	8170V-012C	187.07
1 1/2	8170V-015C	198.82
2	8170V-020C	299.15
3	8170V-030C	516.56
4	8170V-040C	1125.96
6	8170V-060C	2646.02
8	8170V-080C	6595.83

## Wrench Sets

Body Wrench and Nut  
Wrench for Tank  
Adaptor



Size	Code	Price
1/4	TAW-002	25.59
3/8	TAW-003	25.59
1/2	TAW-005	25.83
3/4	TAW-007	26.54
1	TAW-010	27.70
1 1/4	TAW-012	31.19
1 1/2	TAW-015	34.62
2	TAW-020	39.56
3	TAW-030	48.65
4	TAW-040	53.06

## Elastomer Expansion Joint

EPDM Bellows



Size	Code	Price
3/4	EJ22-007C	433.46
1	EJ22-010C	493.73
1 1/4	EJ22-012C	539.34
1 1/2	EJ22-015C	661.53
2	EJ22-020C	824.45
2 1/2	EJ22-025C	1204.11
3	EJ22-030C	1635.94

## Expansion or Repair Joint

Solvent Socket Joints -  
150mm or 300mm  
Travel



FPM Seals  
6" (150mm) travel

Size	Code	Price
1/2	826-005X6C	640.36
3/4	826-007X6C	702.27
1	826-010X6C	760.93
1 1/4	826-012X6C	1160.11
1 1/2	826-015X6C	876.62
2	826-020X6C	1112.92
2 1/2	826-025X6C	1886.85
3	826-030X6C	1538.15
4	826-040X6C	2662.45
6	826-060X6C	2532.09
8	826-080X6C	4777.38
10	826-100X6C	6276.44



FPM Seals  
12" (300mm) travel

Size	Code	Price
1/2	826-005X12C	655.01
3/4	826-007X12C	752.83
1	826-010X12C	804.93
1 1/4	826-012X12C	1270.93
1 1/2	826-015X12C	1016.77
2	826-020X12C	1301.91
2 1/2	826-025X12C	1948.71
3	826-030X12C	1591.93
4	826-040X12C	2629.86
6	826-060X12C	3001.35
8	826-080X12C	5709.45
10	826-100X12C	6885.82



## Tee 90°

Plain x NPT female thread



Size	Code	Price
1/4	802-002C	36.52
1/2	802-005C	36.52
3/4	802-007C	42.07
1	802-010C	53.14
2	802-020C	81.46

## Tee 90°

Plain x NPT female thread ST/ST reinforced



Size	Code	Price
1/2	802-005CSR	29.32
1/2x1/4	802-072CSR	29.02
3/4x1/4	802-098CSR	38.78
3/4x1/2	802-101CSR	39.15
1x1/4	802-128CSR	78.56
1.1/4x1/4	802-164CSR	104.60
1.1/4x1/2	802-166CSR	82.75
1.1/2x1/4	802-207CSR	149.54
1.1/2x1	802-211CSR	99.40
2x1/4	802-245CSR	171.76
3x1/4	802-331CSR	329.12
4x1/4	802-413CSR	356.88

## Tee 90°

Plain x metal NPT female thread



Size	Code	Price
1/2	802-005CBR	61.24
3/4	802-007CBR	119.62
3/4	802-101CBR	74.98

## Elbow 90°

Plain x NPT female thread



Size	Code	Price
1/4	807-002C	11.76
3/8	807-003C	11.89
1/2	807-005C	14.54
3/4	807-007C	17.28
1	807-010C	22.97
1.1/4	807-012C	34.24
1.1/2	807-015C	50.18
2	807-020C	65.53

## Elbow 90°

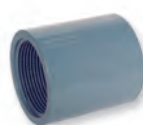
Plain x metal NPT female thread



Size	Code	Price
1/2	807-005CBR	53.14
3/4	807-007CBR	92.51
3/4x1/2	807-101CBR	66.47

## Socket

Plain x NPT female thread



Size	Code	Price
1/4	835-002C	17.57
3/8	835-003C	17.77
1/2	835-005C	9.29
3/4	835-007C	10.12
1	835-010C	22.46
1.1/4	835-012C	23.98
1.1/2	835-015C	28.18
2	835-020C	47.64
2.1/2	835-025C	90.62
3	835-030C	180.51
4	835-040C	299.17
6	835-060C	532.80
8	835-080C	840.79

## Socket

Plain x NPT female thread ST/ST reinforced



Size	Code	Price
1/4	835-002CSR	19.07
3/8	835-003CSR	19.22
1/2	835-005CSR	8.60
1/2x3/4	835-074CSR	9.46
3/4x1/2	835-101CSR	9.46
3/4	835-007CSR	9.46
3/4x1	835-102CSR	20.84
1	835-010CSR	20.84
1x1/2	835-130CSR	20.84
1x3/4	835-131CSR	20.84
1.1/4	835-012CSR	22.01
1.1/2	835-015CSR	25.93
2	835-020CSR	37.15
2.1/2	835-025CSR	83.77
3	835-030CSR	168.52
4	835-040CSR	277.62
6	835-060CSR	503.48

## Socket

Plain x metal NPT female thread



Size	Code	Price
1/2	835-005CBR	33.24
3/4	835-007CBR	67.75
3/4x1/2	835-101CBR	47.65
1	835-010CBR	118.64
1.1/4	835-012CBR	253.85
1.1/2	835-015CBR	335.63
2	835-020CBR	418.76



## Threaded Fittings

Threaded Schedule 80 fittings are de-rated to 50% of the normal working pressure, except for female brass or stainless steel threaded fittings which carry the full Schedule 80 pressure rating.

## Union

Plain x NPT female thread FPM O-Ring



Size	Code	Price
1/2	8059-005C	27.32
3/4	8059-007C	48.23
1	8059-010C	66.83
1.1/4	8059-012C	124.51
1.1/2	8059-015C	125.81
2	8059-020C	145.66
2.1/2	8059-025C	235.90
3	8059-030C	285.46
4	8059-040C	343.79

## Union

Plain x NPT female thread EPDM O-Ring



Size	Code	Price
1/2	8099-005C	26.76
3/4	8099-007C	47.30
1	8099-010C	65.17
1.1/4	8099-012C	122.51
1.1/2	8099-015C	123.50
2	8099-020C	143.73
2.1/2	8099-025C	233.32
3	8099-030C	281.91
4	8099-040C	338.87

## Union

Plain x NPT female thread ST/ST reinforced FPM O-Ring



Size	Code	Price
1/4	859-002CSR	37.47
3/8	859-003CSR	37.15
1/2	8059-005CSR	24.28
3/4	8059-007CSR	42.38
1	8059-010CSR	58.70
1.1/4	8059-012CSR	110.47
1.1/2	8059-015CSR	121.22
2	8059-020CSR	128.74
2.1/2	8059-025CSR	189.55
3	8059-030CSR	360.10
4	8059-040CSR	428.51

## Union

Plain x NPT female thread ST/ST reinforced EPDM O-Ring



Size	Code	Price
1/4	899-002CSR	36.79
3/8	899-003CSR	36.19
1/2	8099-005CSR	23.64
3/4	8099-007CSR	40.74
1	8099-010CSR	57.03
1.1/4	8099-012CSR	109.18
1.1/2	8099-015CSR	119.62
2	8099-020CSR	126.77
2.1/2	8099-025CSR	166.89
3	8099-030CSR	270.16
4	8099-040CSR	609.41

## Union

Plain x metal NPT female thread FPM O-Ring



Size	Code	Price
1	859-010CBR	168.15
1.1/4	859-012CBR	280.30
1.1/2	859-015CBR	317.38
2	859-020CBR	365.02

EPDM O-Ring

Size	Code	Price
1	899-010CBR	166.18
1.1/4	899-012CBR	277.02
1.1/2	899-015CBR	313.03
2	899-020CBR	358.44

## Adaptor

Plain Spigot x NPT female thread ST/ST reinforced



Size	Code	Price
1/2x1/4	878-072CSR	24.94
1/2	878-005CSR	9.09
3/4	878-007CSR	9.78
1	878-010CSR	21.50
1x1/4	878-128CSR	29.17
1.1/4	878-012CSR	22.68
1.1/2	878-015CSR	26.52
2	878-020CSR	37.15
3	878-030CSR	170.11
4	878-040CSR	283.84

## Adaptor

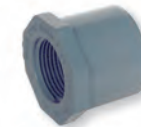
Plain Socket x NPT male thread



Size	Code	Price
1/2	836-005C	7.37
3/4	836-007C	9.09
1	836-010C	15.31
1.1/4	836-012C	22.46
1.1/2	836-015C	30.30
2	836-020C	41.08
2.1/2	836-025C	109.82
3	836-030C	147.97
4	836-040C	251.27
6	836-060CF	575.16

## Reducing Bush

Spigot x NPT female thread



Size	Code	Price
3/8x1/4	838-052C	12.06
1/2x1/8	838-071C	12.23
1/2x1/4	838-072C	12.23
1/2x3/8	838-073C	12.23
3/4x1/4	838-098C	13.88
3/4x1/2	838-101C	6.51
1x3/8	838-129C	18.41
1x1/2	838-130C	8.60
1x3/4	838-131C	8.47
1.1/4x1/2	838-166C	26.52
1.1/4x3/4	838-167C	26.52
1.1/4x1	838-168C	26.24
1.1/2x1/2	838-209C	33.24
1.1/2x3/4	838-210C	32.88
1.1/2x1	838-211C	32.88
1.1/2x1.1/4	838-212C	32.11
2x1/2	838-247C	45.93
2x3/4	838-248C	45.93
2x1	838-249C	45.93
2x1.1/4	838-250C	45.65
2x1.1/2	838-251C	44.96
2.1/2x1/2	838-287C	73.32
2.1/2x3/4	838-288C	73.67
2.1/2x1	838-289C	73.32
2.1/2x1.1/4	838-290C	73.32
2.1/2x1.1/2	838-291C	73.32
2.1/2x2	838-292C	71.40
3x3/4	838-334C	188.03
3x1	838-335C	187.07
3x1.1/4	838-336C	165.25
3x1.1/2	838-337C	164.91
3x2	838-338C	158.41
3x2.1/2	838-339C	157.73
4x2	838-420C	318.41
4x2.1/2	838-421C	320.33
4x3	838-422C	317.74
6x3	838-530C	653.35
6x4	838-532C	651.80

## Reducing Bush

Spigot x NPT female thread ST/ST reinforced



Size	Code	Price
1.¼	838-128CSR	22.16
1.½x¾	838-209CSR	39.15
1.½x¾	838-210CSR	39.15
2x½	838-247CSR	54.09
2x¾	838-248CSR	54.09
2x1	838-249CSR	54.09
3x¾	838-334CSR	224.51
3x1	838-335CSR	224.51
3x1.¼	838-336CSR	224.51
3x1.½	838-337CSR	224.51

## Grooved Coupling Adaptor

Groove joint x pvc-c plain socket



Size	Code	Price
1.¼	833-012C	25.77
1.½	833-015C	33.54
2	833-020C	44.31
2.½	833-025C	72.98
3	833-030C	90.62
4	833-040C	155.77
6	833-060C	234.00

## Nipple

Spigot x NPT male thread



Size	Code	Price
¼	880-1-015C	4.40
⅜	881-1-015C	5.23
½	882-1-020C	5.67
¾	883-1-020C	7.03
1	884-1-030C	10.12
1.¼	885-1-035C	16.27
1.½	886-1-035C	17.57
2	887-1-040C	23.46
2.½	888-1-050C	47.89
3	889-1-050C	59.64
4	890-1-060C	97.43

## Hose Adaptor

Hose spigot x NPT male



Size	Code	Price
½	1436-005C	5.20
¾	1436-007C	6.33
1	1436-010C	6.46
1.¼	1436-012C	9.71
1.½	1436-015C	11.55
2	1436-020C	22.04

## Hexagon Nipple

Spigot x NPT male thread



Size	Code	Price
½	861-005C	8.84
¾	861-007C	18.26
1	861-010C	18.75
1.¼	861-012C	21.84
1.½	861-015C	24.28
2	861-020C	29.02



## Making Threaded Joints

We recommend the use of PTFE tape or Blue 75 Joint Compound for all threaded joints on plastic piping. Please check with our technical department before using any other type of pipe joint compounds, as these can cause stress cracking and lead to failure of the system.

When using PTFE tape, follow the following guidelines:

- Always wrap tape clockwise
- Apply 2 to 3 wraps
- Tighten hand-tight plus 1½ to 2 turns
- Do not overtighten



## PTFE Tape

BS7786

Roll Size mm	Code	Price
12x12x0.075	767-120	1.33



## Blue 75

Size	Code	Price
1 Pint	768-301	34.49





## CPVC Clamp Saddle

Plain socket outlet EPDM O-Ring Zinc Plated Hardware			Plain socket outlet FPM O-Ring Zinc Plated Hardware			Plain socket outlet EPDM O-Ring Stainless Steel Hardware			Plain socket outlet FPM O-Ring Stainless Steel Hardware		
Size	Code	Price	Code	Price		Code	Price		Code	Price	
2x½	866-247C	83.13	866V-247C	86.39		866S-247C	125.47		866SV-247C	130.36	
2x¾	866-248C	83.13	866V-248C	86.39		866S-248C	125.47		866SV-248C	130.36	
2x1	866-249C	83.13	866V-249C	86.39		866S-249C	125.47		866SV-249C	130.36	
2x1.¼	866-250C	83.13	866V-250C	86.39		866S-250C	125.47		866SV-250C	130.36	
2x1.½	866-251C	83.13	866V-251C	86.39		866S-251C	125.47		866SV-251C	130.36	
2.1/2x1.½	866-291C	112.42	866V-291C	120.65		866S-291C	169.45		866SV-291C	174.36	
3x½	866-333C	112.42	866V-333C	120.65		866S-333C	169.45		866SV-333C	174.36	
3x¾	866-334C	112.42	866V-334C	120.65		866S-334C	169.45		866SV-334C	174.36	
3x1	866-335C	112.42	866V-335C	120.65		866S-335C	169.45		866SV-335C	174.36	
3x1.¼	866-336C	112.42	866V-336C	120.65		866S-336C	169.45		866SV-336C	174.36	
3x1.½	866-337C	112.42	866V-337C	120.65		866S-337C	169.45		866SV-337C	174.36	
3x2	866-338C	112.42	866V-338C	120.65		866S-338C	169.45		866SV-338C	174.36	
4x½	866-415C	136.88	866V-415C	146.69		866S-415C	218.33		866SV-415C	226.49	
4x¾	866-416C	136.88	866V-416C	146.69		866S-416C	218.33		866SV-416C	226.49	
4x1	866-417C	136.88	866V-417C	146.69		866S-417C	218.33		866SV-417C	226.49	
4x1.¼	866-418C	136.88	866V-418C	146.69		866S-418C	218.33		866SV-418C	226.49	
4x1.½	866-419C	136.88	866V-419C	146.69		866S-419C	218.33		866SV-419C	226.49	
4x2	866-420C	136.88	866V-420C	146.69		866S-420C	218.33		866SV-420C	226.49	
4x2.½	866-421C	161.31	866V-421C	169.45		866S-421C	236.28		866SV-421C	250.95	
4x3	866-422C	174.36	866V-422C	179.21		866S-422C	245.09		866SV-422C	260.68	
6x½	866-523C	234.65	866V-523C	244.39		866S-523C	343.78		866SV-523C	363.37	
6x¾	866-524C	234.65	866V-524C	244.39		866S-524C	343.78		866SV-524C	363.37	
6x1	866-525C	234.65	866V-525C	244.39		866S-525C	343.78		866SV-525C	363.37	
6x1.¼	866-526C	234.65	866V-526C	254.17		866S-526C	343.78		866SV-526C	363.37	
6x1.½	866-527C	234.65	866V-527C	254.17		866S-527C	343.78		866SV-527C	363.37	
6x2	866-528C	234.65	866V-528C	254.17		866S-528C	343.78		866SV-528C	363.37	
6x2.½	866-529C	267.93	866V-529C	285.13		866S-529C	402.09		866SV-529C	395.91	
6x3	866-530C	281.55	866V-530C	298.21		866S-530C	400.82		866SV-530C	405.73	
6x4	866-532C	304.33	866V-532C	320.96		866S-532C	423.63		866SV-532C	435.05	
8x½	866-573C	539.34	866V-573C	560.51		866S-573C	684.36		866SV-573C	708.79	
8x¾	866-574C	539.34	866V-574C	560.51		866S-574C	684.36		866SV-574C	708.79	
8x1	866-575C	539.34	866V-575C	560.51		866S-575C	684.36		866SV-575C	708.79	
8x1.¼	866-576C	539.34	866V-576C	558.87		866S-576C	684.36		866SV-576C	708.79	
8x1.½	866-577C	539.34	866V-577C	558.87		866S-577C	684.36		866SV-577C	708.79	
8x2	866-578C	536.09	866V-578C	557.28		866S-578C	682.74		866SV-578C	705.55	
8x2.½	866-579C	583.32	866V-579C	607.77		866S-579C	744.66		866SV-579C	770.73	
8x3	866-580C	606.15	866V-580C	630.59		866S-580C	773.97		866SV-580C	801.67	
8x4	866-582C	632.20	866V-582C	672.91		866S-582C	809.78		866SV-582C	839.14	
8x6	866-585C	703.87	866V-585C	731.59		866S-585C	901.06		866SV-585C	933.67	
10x4	866-624C	842.41	866V-624C	876.64		866S-624C	1077.08		866SV-624C	1116.14	
10x6	866-626C	962.96	866V-626C	1002.10		866S-626C	1233.47		866SV-626C	1277.46	
12x4	866-664C	1060.76	866V-664C	1103.09		866S-664C	1355.67		866SV-664C	1404.53	
12x6	866-666C	1217.16	866V-666C	1168.26		866S-666C	1559.36		866SV-666C	1616.38	

### Clamp Saddle Assembly

Clamp Saddles are quick and easy to assemble. They provide a simple, low cost alternative to a Branch Tee. Ensure that the pipe is de-pressurised and drained prior to fitting.





## CPVC Clamp Saddle

NPT female threaded outlet EPDM O-Ring Zinc Plated Hardware			NPT female threaded outlet FPM O-Ring Zinc Plated Hardware			NPT female threaded outlet EPDM O-Ring Stainless Steel Hardware			NPT female threaded outlet FPM O-Ring Stainless Steel Hardware		
Size	Code	Price	Code	Price		Code	Price		Code	Price	
2x½	867-247CSR	86.04	867V-247CSR	99.42		867S-247CSR	144.06		867SV-247CSR	159.71	
2x¾	867-248CSR	86.04	867V-248CSR	99.42		867S-248CSR	144.06		867SV-248CSR	159.71	
2x1	867-249CSR	86.04	867V-249CSR	99.42		867S-249CSR	144.06		867SV-249CSR	159.71	
2x1.¼	867-250CSR	86.04	867V-250CSR	99.42		867S-250CSR	144.06		867SV-250CSR	159.71	
2x1.½	867-251CSR	86.04	867V-251CSR	99.42		867S-251CSR	144.06		867SV-251CSR	159.71	
2.½x1.½	867-291CSR	119.93	867V-291CSR	140.16		867S-291CSR	195.55		867SV-291CSR	215.08	
3x½	867-333CSR	119.93	867V-333CSR	140.16		867S-333CSR	195.55		867SV-333CSR	215.08	
3x¾	867-334CSR	119.93	867V-334CSR	140.16		867S-334CSR	195.55		867SV-334CSR	215.08	
3x1	867-335CSR	119.93	867V-335CSR	140.16		867S-335CSR	195.55		867SV-335CSR	215.08	
3x1.¼	867-336CSR	119.93	867V-336CSR	140.16		867S-336CSR	195.55		867SV-336CSR	215.08	
3x1.½	867-337CSR	119.93	867V-337CSR	140.16		867S-337CSR	195.55		867SV-337CSR	215.08	
3x2	867-338CSR	119.93	867V-338CSR	140.16		867S-338CSR	195.55		867SV-338CSR	215.08	
4x½	867-415CSR	153.18	867V-415CSR	176.00		867S-415CSR	247.64		867SV-415CSR	273.71	
4x¾	867-416CSR	153.18	867V-416CSR	176.00		867S-416CSR	247.64		867SV-416CSR	273.71	
4x1	867-417CSR	153.18	867V-417CSR	176.00		867S-417CSR	247.64		867SV-417CSR	273.71	
4x1.¼	867-418CSR	153.18	867V-418CSR	176.00		867S-418CSR	247.64		867SV-418CSR	273.71	
4x1.½	867-419CSR	153.18	867V-419CSR	176.00		867S-419CSR	247.64		867SV-419CSR	273.71	
4x2	867-420CSR	153.18	867V-420CSR	176.00		867S-420CSR	247.64		867SV-420CSR	273.71	
4x2.½	867-421CSR	179.21	867V-421CSR	199.45		867S-421CSR	272.45		867SV-421CSR	297.50	
4x3	867-422CSR	197.48	867V-422CSR	213.81		867S-422CSR	281.18		867SV-422CSR	309.26	
6x½	867-523CSR	254.17	867V-523CSR	291.69		867S-523CSR	417.13		867SV-523CSR	462.72	
6x¾	867-524CSR	254.17	867V-524CSR	291.69		867S-524CSR	417.13		867SV-524CSR	462.72	
6x1	867-525CSR	254.17	867V-525CSR	291.69		867S-525CSR	417.13		867SV-525CSR	462.72	
6x1.¼	867-526CSR	254.17	867V-526CSR	291.69		867S-526CSR	417.13		867SV-526CSR	462.72	
6x1.½	867-527CSR	254.17	867V-527CSR	291.69		867S-527CSR	417.13		867SV-527CSR	462.72	
6x2	867-528CSR	254.17	867V-528CSR	291.69		867S-528CSR	417.13		867SV-528CSR	462.72	
6x2.½	867-529CSR	286.09	867V-529CSR	330.77		867S-529CSR	446.46		867SV-529CSR	500.26	
6x3	867-530CSR	296.86	867V-530CSR	338.87		867S-530CSR	457.86		867SV-530CSR	514.88	
6x4	867-532CSR	329.12	867V-532CSR	368.22		867S-532CSR	483.93		867SV-532CSR	557.28	
8x½	867-573CSR	567.03	867V-573CSR	617.57		867S-573CSR	769.06		867SV-573CSR	830.97	
8x¾	867-574CSR	567.03	867V-574CSR	615.93		867S-574CSR	769.06		867SV-574CSR	830.97	
8x1	867-575CSR	567.03	867V-575CSR	617.57		867S-575CSR	769.06		867SV-575CSR	830.97	
8x1.¼	867-576CSR	567.03	867V-576CSR	615.93		867S-576CSR	769.06		867SV-576CSR	830.97	
8x1.½	867-577CSR	567.03	867V-577CSR	615.93		867S-577CSR	769.06		867SV-577CSR	829.36	
8x2	867-578CSR	565.41	867V-578CSR	614.26		867S-578CSR	767.44		867SV-578CSR	827.69	
8x2.½	867-579CSR	614.26	867V-579CSR	669.69		867S-579CSR	837.52		867SV-579CSR	904.30	
8x3	867-580CSR	643.60	867V-580CSR	695.76		867S-580CSR	873.35		867SV-580CSR	943.42	
8x4	867-582CSR	672.91	867V-582CSR	730.02		867S-582CSR	914.11		867SV-582CSR	989.10	
10x4	867-624CSR	816.29	867V-624CSR	884.75		867S-624CSR	1104.74		867SV-624CSR	1194.38	
10x6	867-626CSR	932.00	867V-626CSR	1011.89		867S-626CSR	1264.39		867SV-626CSR	1367.08	
12x4	867-664CSR	1028.12	867V-664CSR	1112.90		867S-664CSR	1389.88		867SV-664CSR	1500.68	
12x6	867-666CSR	1179.66	867V-666CSR	1279.10		867S-666CSR	1598.42		867SV-666CSR	1727.18	



### Pressure Ratings

CPVC saddles are suitable for use at working pressures of up to 16 bar at 20°C for sizes 2" to 4", 13.5 bar at 20°C for size 6", and 10 bar at 20°C for sizes 8" to 12".

# threaded fittings inch sizes

3

## Tee 90°

NPT female threaded



Size	Code	Price
1/4	805-002C	26.76
3/8	805-003C	26.86
1/2	805-005C	27.69
3/4	805-007C	39.80
1	805-010C	44.67
1 1/4	805-012C	46.61
1 1/2	805-015C	49.83
2	805-020C	57.69
2 1/2	805-025C	252.23
3	805-030C	301.09
4	805-040C	690.89

## Tee 90°

NPT female threaded  
ST/ST reinforced



Size	Code	Price
1/4	805-002CSR	30.17
1/2	805-005CSR	41.08
3/4	805-007CSR	46.93
1	805-010CSR	70.74
1 1/2	805-015CSR	77.26
2	805-020CSR	92.86

## Elbow 90°

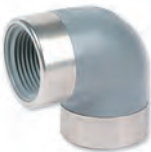
NPT female threaded



Size	Code	Price
1/4	808-002C	14.00
3/8	808-003C	14.00
1/2	808-005C	9.09
3/4	808-007C	13.51
1	808-010C	19.07
1 1/4	808-012C	36.52
1 1/2	808-015C	40.74
2	808-020C	55.09
2 1/2	808-025C	155.12
3	808-030C	173.04
4	808-040C	274.42

## Elbow 90°

NPT female threaded  
ST/ST reinforced



Size	Code	Price
1/2	808-005CSR	6.83
3/4	808-007CSR	9.92
1	808-010CSR	13.06
1 1/4	808-012CSR	24.95
1 1/2	808-015CSR	30.30
2	808-020CSR	41.38

## Elbow 45°

NPT female threaded



Size	Code	Price
1/4	819-002C	18.26
3/8	819-003C	18.41
1/2	819-005C	17.77
3/4	819-007C	19.90
1	819-010C	22.34
1 1/4	819-012C	37.81
1 1/2	819-015C	38.78
2	819-020C	51.46
2 1/2	819-025C	114.36
3	819-030C	146.97
4	819-040C	229.75

## Socket

NPT female threaded  
ST/ST reinforced



Size	Code	Price
1/2	830-005CSR	14.02
3/4	830-007CSR	22.34
1	830-010CSR	25.56
1 1/4	830-012CSR	27.57
1 1/2	830-015CSR	29.98
2	830-020CSR	36.19

## Socket

NPT female threaded



Size	Code	Price
1/4	830-002C	17.44
3/8	830-003C	17.57
1/2	830-005C	14.99
3/4	830-007C	23.78
1	830-010C	27.57
1 1/4	830-012C	29.82
1 1/2	830-015C	32.88
2	830-020C	38.78
2 1/2	830-025C	70.06
3	830-030C	85.07
4	830-040C	165.25
6	830-060CF	483.93

## Reducing Socket

NPT female threaded  
ST/ST reinforced



Size	Code	Price
3/4x1/2	830-101CSR	32.44
1x1/2	830-130CSR	39.15
1x3/4	830-131CSR	39.15
1 1/4x1	830-168CSR	53.13
1 1/2x3/4	830-210CSR	75.90
1 1/2x1	830-211CSR	75.90
1 1/2x1 1/4	830-212CSR	75.90
2x1	830-249CSR	186.72
2x1 1/2	830-251CSR	186.72

## Nipple

NPT male threaded



Size	Code	Price
1/4	880-015C	4.40
3/8	881-015C	5.23
1/2	882-020C	5.67
3/4	883-020C	7.03
1	884-030C	10.12
1 1/4	885-035C	16.27
1 1/2	886-035C	17.57
2	887-040C	23.46
2 1/2	888-050C	47.89
3	889-050C	59.64
4	890-060C	97.43

## Union

NPT female threaded - FPM O-Ring



Size	Code	Price
1/2	8058-005C	26.24
3/4	8058-007C	46.29
1	8058-010C	63.86
1 1/4	8058-012C	119.62
1 1/2	8058-015C	120.63
2	8058-020C	139.81
2 1/2	8058-025C	225.21
3	8058-030C	389.42
4	8058-040C	467.66

## Union

NPT female threaded ST/ST reinforced FPM O-Ring



Size	Code	Price
1/2	8058-005CSR	29.17
3/4	8058-007CSR	50.87
1	8058-010CSR	70.06
1 1/4	8058-012CSR	130.36
1 1/2	8058-015CSR	142.70
2	8058-020CSR	153.50
3	8058-030CSR	430.17
4	8058-040CSR	513.22

## Union

NPT female threaded - EPDM O-Ring



Size	Code	Price
1/2	8098-005C	25.93
3/4	8098-007C	45.93
1	8098-010C	63.25
1 1/4	8098-012C	117.99
1 1/2	8098-015C	119.27
2	8098-020C	138.47
2 1/2	8098-025C	197.14
3	8098-030C	428.51
4	8098-040C	459.50

## Union

NPT female threaded ST/ST reinforced EPDM O-Ring



Size	Code	Price
1/2	8098-005CSR	28.38
3/4	8098-007CSR	50.52
1	8098-010CSR	69.41
1 1/4	8098-012CSR	129.10
1 1/2	8098-015CSR	141.75
2	8098-020CSR	151.88
2 1/2	8098-025CSR	261.01
3	8098-030CSR	423.63
4	8098-040CSR	500.26

## Plug

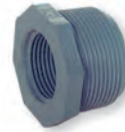
NPT male threaded



Size	Code	Price
1/4	850-002C	8.84
3/8	850-003C	8.84
1/2	850-005C	7.84
3/4	850-007C	9.78
1	850-010C	16.14
1 1/4	850-012C	24.28
1 1/2	850-015C	20.67
2	850-020C	28.68
2 1/2	850-025C	48.58
3	850-030C	53.44
4	850-040C	64.50

## Reducing Bush

NPT male x NPT female thread



Size	Code	Price
3/8x1/4	839-052C	16.14
1/2x1/4	839-072C	16.27
1/2x3/8	839-073C	16.14
3/4x1/4	839-098C	18.05
3/4x3/8	839-099C	18.05
3/4x1/2	839-101C	7.83
1x1/4	839-128C	19.70
1x3/8	839-129C	19.70
1x1/2	839-130C	13.39
1x3/4	839-131C	13.39
1 1/4x1/2	839-166C	26.41
1 1/4x3/4	839-167C	26.24
1 1/4x1	839-168C	25.93
1 1/2x1/2	839-209C	31.75
1 1/2x3/4	839-210C	31.92
1 1/2x1	839-211C	31.75
1 1/2x1 1/4	839-212C	30.94
2x1/2	839-247C	36.19
2x3/4	839-248C	36.19
2x1	839-249C	36.19
2x1 1/4	839-250C	35.83
2x1 1/2	839-251C	31.75
2 1/2x2	839-292C	84.04
3x1 1/2	839-337C	115.68
3x2	839-338C	115.00
3x2 1/2	839-339C	113.38
4x2	839-420C	197.14
4x3	839-422C	195.55

## Reducing Bush

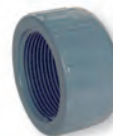
NPT male x NPT female threaded ST/ST reinforced



Size	Code	Price
1 1/2x1/2	839-209CSR	38.16
1 1/2x3/4	839-210CSR	38.16
2x1/2	839-247CSR	43.05
2x3/4	839-248CSR	43.05
2x1	839-249CSR	43.05
4x2	839-420CSR	234.96

## Cap

NPT female threaded



Size	Code	Price
1/4	848-002C	10.96
3/8	848-003C	10.96
1/2	848-005C	9.63
3/4	848-007C	15.95
1	848-010C	22.46
1 1/4	848-012C	39.42
1 1/2	848-015C	41.08
2	848-020C	59.32
2 1/2	848-025C	135.64
3	848-030C	179.94
4	848-040C	261.38

## PTFE Tape

BS7786



Size	Code	Price
12x12x0.075mm	767-120	1.33



## Threaded Fittings

We recommend the use of PTFE tape or Blue 75 Joint Compound for all threaded joints on plastic piping. Please check with our technical department before using any other type of pipe joint compounds, as these can cause stress cracking and lead to failure of the system.

## Full Face Flange

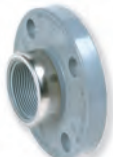
Plain Socket - Drilled  
ANSI 150



Size	Code	Price
1/2	851-005C	24.94
3/4	851-007C	26.41
1	851-010C	29.83
1 1/4	851-012C	35.55
1 1/2	851-015C	41.38
2	851-020C	52.41
2 1/2	851-025C	103.32
3	851-030C	110.47
4	851-040C	154.78
6	851-060C	255.46
8	851-080C	557.28

## Full Face Flange

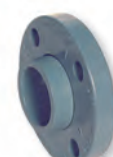
NPT Female Threaded -  
Drilled ANSI 150



Size	Code	Price
1/2	852-005CSR	29.80
3/4	852-007CSR	36.91
1	852-010CSR	40.33
1 1/4	852-012CSR	55.55
1 1/2	852-015CSR	59.59
2	852-020CSR	64.53
2 1/2	852-025CSR	104.01
3	852-030CSR	105.51
4	852-040CSR	163.58

## Stub & Backing Ring

Plain Socket - Drilled  
ANSI 150



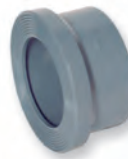
Size	Code	Price
1/2	854-005C	24.75
3/4	854-007C	25.77
1	854-010C	29.49
1 1/4	854-012C	35.55
1 1/2	854-015C	40.39
2	854-020C	52.17
2 1/2	854-025C	101.38
3	854-030CE	111.15
3	854-030CN	111.15
3	854-030C	111.15
4	854-040C	147.61
6*	854-060CM	252.90
8*	854-080CM	689.25
10	854-100C	2593.99
12	854-120C	3877.96
14	854-140C	4458.03
16	854-160C	5579.03

Drilled ANSI 150  
except \* which are  
universal drilled:-  
BS 4504 EN1072 PN10  
BS10 Table D & E  
ASA 150

Van Stone Style Plastic Ring.  
Also available NPT Female Threaded

## Stub Flange

Plain Socket



Size	Code	Price
1/2	854-005-2C	17.77
3/4	854-007-2C	19.71
1	854-010-2C	22.01
1 1/4	854-012-2C	24.47
1 1/2	854-015-2C	27.06
2	854-020-2C	35.19
2 1/2	854-025-2C	60.92
3	854-030-2C	63.87
4	854-040-2C	86.03
6	854-060-2C	153.80
8	854-080-2C	320.68
10	854-100-2C	1580.51
12	854-120-2C	2701.52

\*See Note

## Stub & Backing Ring

Plain Spigot - Drilled  
ANSI 150

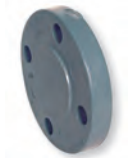


Size	Code	Price
1/2	856-005C	28.38
3/4	856-007C	31.13
1	856-010C	36.52
1 1/4	856-012C	44.31
1 1/2	856-015C	50.18
2	856-020C	72.37
2 1/2	856-025C	112.44
3	856-030C	127.77
4	856-040C	137.23
6	856-060C	280.59
8	856-080C	560.51
10	856-100C	2805.83
12	856-120C	4194.09

Van Stone Style Plastic Ring

## Blind Flange

Drilled ANSI 150



Size	Code	Price
1/2	853-005C*	35.55
3/4	853-007C*	39.80
1	853-010C*	48.87
1 1/4	853-012C*	56.08
1 1/2	853-015C*	79.51
2	853-020C*	84.72
2 1/2	853-025C*	132.67
3	853-030C*	131.00
4	853-040C*	223.24
6	853-060C*	363.38
8	853-080C*	671.32
10	853-100C*	1329.65
12	853-120C*	2199.68
14	853-140CF*	5041.36
16	853-160CF*	7814.58



## Flange Pressure Ratings

Flanges drilled ANSI 150 are suitable for use at working pressures of up to 10 bar at 20°C.

\*Note that the stub flange, when used with an appropriate steel backing ring, is suitable for use at 16 bar, for sizes 1/2" to 4", and 10 bar for larger.



## Backing Ring Table D/E

Galvanised Mild Steel



Size	Code	Price
1/2"/20	860-005-11E	11.37
3/4"/25	860-007-11E	12.86
1"/32	860-010-11E	13.49
1.1/4"/40	860-012-11E	13.92
1.1/2"/50	860-015-11E	17.05
2"/63	860-020-11E	24.21
2.1/2"/75	860-025-11E	36.17
3"/90	860-030-11E	36.77
4"/110 Table D	860-040-11D	47.52
4"/110 Table E	860-040-11E	47.52
5	860-050-11E	73.20
6"/160	860-060-11E	80.36
8	860-080-11E	108.75
10	860-100-11E	153.83
12	860-120-11E	227.00
14	860-140-11E	633.07
16	860-160-11E	777.04

## Backing Ring NP10/16

Galvanised Mild Steel



Size	Code	Price
1/2"/20	860-005-11NP	12.86
3/4"/25	860-007-11NP	13.60
1"/32	860-010-11NP	16.17
1.1/4"/40	860-012-11NP	17.16
1.1/2"/50	860-015-11NP	18.84
2"/63	860-020-11NP	26.62
2.1/2"/75	860-025-11NP	36.43
3"/90	860-030-11NP	42.12
4"/110	860-040-11NP	53.87
5"/140	860-050-11NP	75.01
6	860-060-11NP	85.52
8 NP 10	860-080-11N	120.28
8 NP 16	860-080-11P	120.28
10 NP 10	860-100-11N	166.98
10 NP 16	860-100-11P	166.98
12 NP 10	860-120-11N	227.00
12 NP 16	860-120-11P	227.00
14 NP 10	860-140-11N	633.06
16 NP 10	860-160-11N	777.04

## Backing Ring ASA 150

Galvanised Mild Steel



Size	Code	Price
1/2"/20	860-005-11A	12.85
3/4"/25	860-007-11A	13.60
1"/32	860-010-11A	16.17
1.1/4"/40	860-012-11A	17.17
1.1/2"/50	860-015-11A	18.84
2"/63	860-020-11A	26.62
2.1/2"/75	860-025-11A	36.43
3"/90	860-030-11A	42.12
4"/110	860-040-11A	53.87
5	860-050-11A	75.00
6	860-060-11A	85.52
8	860-080-11A	120.28
10	860-100-11A	166.98
12	860-120-11A	227.01
14	860-140-11A	633.06
16	860-160-11A	777.04

## Stub Gasket

EPDM



Size	Code	Price
1/2"/20	861-E-005	0.77
3/4"/25	861-E-007	0.88
1"/32	861-E-010	0.97
1.1/4"/40	861-E-012	1.20
1.1/2"/50	861-E-015	1.46
2"/63	861-E-020	2.50
2.1/2"/75	861-E-025	3.07
3"/90	861-E-030	3.30
4"/110	861-E-040	4.80
5"/140	861-E-050	6.17
6"/160	861-E-060	7.07
8"/200	861-E-081	14.05
10"/280	861-E-280	17.24
12"/315	861-E-120	19.54

Please note codes above are for Table D/E. Replace 'E' with 'ISO' for NP10/16 or 'A' for ANSI 150

## Stub Gasket

FPM



Size	Code	Price
1/2"/20	862-E-005	3.55
3/4"/25	862-E-007	5.27
1"/32	862-E-010	6.97
1.1/4"/40	862-E-012	11.20
1.1/2"/50	862-E-015	12.22
2"/63	862-E-020	16.10
2.1/2"/75	862-E-075	23.32
3"/90	862-E-030	30.38
4"/110	862-E-040	51.86
5"/140	862-E-050	86.57
6"/160	862-E-060	86.57
8"/200	862-E-081	103.66
10"/280	862-E-280	141.11
12"/315	862-E-120	147.32

Please note codes above are for Table D/E. Replace 'E' with 'ISO' for NP10/16 or 'A' for ANSI 150

## Gasket

EPDM - full face



Size	Code	Price
1/2"/20	863-E-005	2.65
3/4"/25	863-E-007	2.97
1"/32	863-E-010	3.55
1.1/4"/40	863-E-012	4.24
1.1/2"/50	863-E-015	5.02
2"/63	863-E-020	6.17
3"/90	863-E-030	8.69
4"/110	863-E-040	12.12
6"/160	863-E-060	19.54
8"/225	863-E-081	23.08
10"/280	863-E-280	38.84
12"/315	863-E-120	53.89

Please note codes above are for Table D/E. Replace 'E' with 'ISO' for NP10/16 or 'A' for ANSI 150

## Gasket

FPM - full face



Size	Code	Price
1/2"/20	864-E-005	20.99
3/4"/25	864-E-007	24.22
1"/32	864-E-010	30.13
1.1/4"/40	864-E-012	33.14
1.1/2"/50	864-E-015	39.25
2"/63	864-E-020	50.46
3"/90	864-E-030	71.47
4"/110	864-E-040	97.75
6"/160	864-E-060	158.94
8"/200	864-E-081	173.11
10"/280	864-E-280	208.98
12"/315	864-E-120	270.61

Please note codes above are for Table D/E. Replace 'E' with 'ISO' for NP10/16 or 'A' for ANSI 150

## Spears True Union 2000 Industrial Ball Valve

**Description:** In-line double union ball valve with lockable handle

**Mounting:** In any position

**Maximum Fluid Pressure at 20°C:** Sizes 1/2" to 2" - 16 bar; sizes 2 1/2" to 6" - 10 bar

All sizes flanged - 10 bar

**Fluid Temperature Range:** 0°C-80°C

**Construction:**

**Body:** PVC-C

**Seals:** EPDM or FPM

**Seats:** PTFE

**End Connections:** Solvent Sockets, Solvent Spigots, NPT Female Threaded, Reinforced NPT Female Threaded, Flanged

**Features:** Sizes 1/2" to 2" Solvent Socket valves also include NPT Female Threaded end connections. All valves are assembled with Silicon-free, water soluble lubricant.

**Option:** T-Handle operation on 6" valve



### Inch Solvent Cement Sockets

EPDM Seals  
PTFE Seats

Size	Code	Price
1/2	1829-005C	93.77
3/4	1829-007C	118.05
1	1829-010C	140.60
1 1/4	1829-012C	223.46
1 1/2	1829-015C	236.02
2	1829-020C	315.70
2 1/2	1822-025C	707.70
3	1822-030C	827.52
4	1822-040C	1499.44
6	1822-060C	3192.03
6*	18226-060C	3192.03

\*T-Handle operation

### Inch Solvent Cement Spigots

EPDM Seals  
PTFE Seats

Size	Code	Price
1/2	1827-005C	89.32
3/4	1827-007C	112.44
1	1827-010C	133.89
1 1/4	1827-012C	212.84
1 1/2	1827-015C	224.78
2	1827-020C	300.66
2 1/2	1827-025C	673.99
3	1827-030C	788.11
4	1827-040C	1428.04
6	1827-060C	3040.03
6*	18276-060C	on application

\*T-Handle operation

### Flanged ANSI 150

EPDM Seals  
PTFE Seats

Size	Code	Price
1/2	1823-005C	136.47
3/4	1823-007C	161.46
1	1823-010C	190.06
1 1/4	1823-012C	280.47
1 1/2	1823-015C	301.70
2	1823-020C	399.92
2 1/2	1823-025C	867.13
3	1823-030C	999.75
4	1823-040C	1709.20
6	1823-060C	3521.76
6*	18236-060C	3521.76

\*T-Handle operation

### Inch Solvent Cement Sockets

FPM Seals  
PTFE Seats

Size	Code	Price
1/2	1839-005C	99.20
3/4	1839-007C	125.00
1	1839-010C	148.76
1 1/4	1839-012C	236.53
1 1/2	1839-015C	249.73
2	1839-020C	345.59
2 1/2	1832-025C	748.86
3	1832-030C	875.70
4	1832-040C	1586.66
6	1832-060C	3377.57
6*	18326-060C	3377.57

\*T-Handle operation

### Inch Solvent Cement Spigots

FPM Seals  
PTFE Seats

Size	Code	Price
1/2	1837-005C	99.20
3/4	1837-007C	125.00
1	1837-010C	148.76
1 1/4	1837-012C	236.55
1 1/2	1837-015C	249.73
2	1837-020C	345.59
2 1/2	1837-025C	748.86
3	1837-030C	875.70
4	1837-040C	1586.66
6	1837-060C	3377.57
6*	18376-060C	on application

\*T-Handle operation

### Flanged ANSI 150

FPM Seals  
PTFE Seats

Size	Code	Price
1/2	1833-005C	146.38
3/4	1833-007C	173.97
1	1833-010C	204.74
1 1/4	1833-012C	304.21
1 1/2	1833-015C	326.73
2	1833-020C	444.91
2 1/2	1833-025C	941.88
3	1833-030C	1087.37
4	1833-040C	1867.86
6	1833-060C	3859.22
6*	18336-060C	3859.22

\*T-Handle operation



### Silicon Free Valves

All Spears valves are assembled with a water soluble lubricant and are "silicon free."

## Spears True Union 2000 Industrial Vented Ball Valve

**Description:** In-line double union ball valve

**Mounting:** In any position

**Maximum Fluid Pressure at 20°C:** All sizes 1/2" to 2" - 16 bar; sizes 2 1/2" to 4" - 10 bar; all sizes flanged - 10 bar

**Fluid Temperature Range:** 0°C-80°C

**Construction:**

**Body:** PVC-C

**Seals:** EPDM or FPM

**Seats:** PTFE

**End Connections:** Solvent Sockets, Solvent Spigots, Reinforced NPT Female Threaded, Flanged

**Features:** Designed for Sodium Hypochlorite and other chemical applications  
Vented ball equalises internal fluid pressure assuring proper valve operation and long life.



### Inch Solvent Cement Sockets

EPDM Seals  
PTFE Seats

Size	Code	Price
1/2	1829V-005C	130.89
3/4	1829V-007C	164.81
1	1829V-010C	196.21
1 1/4	1829V-012C	311.94
1 1/2	1829V-015C	329.44
2	1829V-020C	440.58
2 1/2	1822V-025C	987.83
3	1822V-030C	1155.00
4	1822V-040C	2092.87
6	1822V-060C	4455.49

### Inch Solvent Cement Sockets

FPM Seals  
PTFE Seats

Size	Code	Price
1/2	1839V-005C	145.40
3/4	1839V-007C	183.16
1	1839V-010C	218.00
1 1/4	1839V-012C	346.72
1 1/2	1839V-015C	366.01
2	1839V-020C	506.44
2 1/2	1832V-025C	1097.47
3	1832V-030C	1283.41
4	1832V-040C	2325.46
6	1832V-060C	4950.20

### NPT Female Threaded

Stainless Steel Reinforced

EPDM Seals  
PTFE Seats

Size	Code	Price
1/2	1821V-005CSR	132.94
3/4	1821V-007CSR	169.97
1	1821V-010CSR	201.34
1 1/4	1821V-012CSR	327.30
1 1/2	1821V-015CSR	346.00
2	1821V-020CSR	458.54
2 1/2	1821V-025CSR	1036.06
3	1821V-030CSR	1203.26
4	1821V-040CSR	2149.14

### NPT Female Threaded

Stainless Steel Reinforced

FPM Seals  
PTFE Seats

Size	Code	Price
1/2	1831V-005CSR	147.58
3/4	1831V-007CSR	188.29
1	1831V-010CSR	223.07
1 1/4	1831V-012CSR	362.10
1 1/2	1831V-015CSR	382.56
2	1831V-020CSR	524.45
2 1/2	1831V-025CSR	1145.70
3	1831V-030CSR	1331.60
4	1831V-040CSR	2381.78



### Spears 2000 Range Features

The Spears 2000 range incorporates new design features and improved value for money. The Industrial valve includes a lockable handle and features a full bore 6" design. It is also available with a vented ball to provide long, trouble free operation for chemical applications.

### Need advice?

Our expert team are here to help.  
Call our freephone:

**0800 975 79 71**

Or from outside of the UK:  
+44 191 521 3111



### Spears Valve Bracket

Includes: Polypropylene Valve Bracket, Screws and Nuts



Size	Code	Price
1/2"/20	TUMB2-005	80.37
3/4"/25	TUMB2-007	85.23
1"/32	TUMB2-010	91.66
1.1/4"/40	TUMB2-012	95.89
1.1/2"/50	TUMB2-015	103.51
2"/63	TUMB2-020	115.36
3"/90	TUMB2-030	218.84
4"/110	TUMB2-040	267.53



### Spears Actuator Mounting Platform

Includes: Polypropylene Mounting Platform, Screws and Nuts.

Size	Code	Price
1/2"/20	MMP1-005	34.11
3/4"/25	MMP1-007	35.32
1"/32	MMP1-010	41.08
1.1/4"/40	MMP1-012	45.03
1.1/2"/50	MMP1-015	61.48
2"/63	MMP1-020	69.42
3"/90	MMP1-030	156.47
4"/110	MMP1-040	180.14

### Spears Ball Valve Stem Extension Kit

Suitable for use with Spears True Union 2000 Ball Valve.

Does not include extension pipe.



Size	Code	Price
1/2	BVSE2-005-000	18.37
3/4	BVSE2-007-000	20.38
1	BVSE2-010-000	20.38
1.1/4	BVSE2-012-000	33.19
1.1/2	BVSE2-015-000	37.74
2	BVSE2-020-000	40.77
2.1/2 & 3	BVSE2-030-000	41.74
4	BVSE2-040-000	57.24

Also available for butterfly valve.  
Please enquire for details.

### Spears Compact Ball Valve

**Description:** In-line ball valve

**Mounting:** In any position

**Maximum Fluid Pressure at 20°C:** Sizes 1/2" to 2" - 16 bar; sizes 3" to 6" - 10 bar

**Fluid Temperature Range:** 0°C-80°C

**Construction:**

**Body:** PVC-C

**Seals:** EPDM or FPM

**Seats:** PTFE

**End Connections:** Solvent Sockets, NPT Female Threaded, Flanged ANSI 150



EPDM Seals  
PTFE Seats

#### Inch Solvent Cement Sockets

Size	Code	Price
1/2	2122-005C	43.47
3/4	2122-007C	57.42
1	2122-010C	71.72
1.1/4	2122-012C	144.98
1.1/2	2122-015C	144.98
2	2122-020C	189.95
3	2122-030C	578.83
4	2122-040C	1067.62
6	2122-060C	1859.09

FPM Seals  
PTFE Seats

#### Inch Solvent Cement Sockets

Size	Code	Price
1/2	2132-005C	48.45
3/4	2132-007C	64.53
1	2132-010C	80.69
1.1/4	2132-012C	161.04
1.1/2	2132-015C	161.04
2	2132-020C	213.21
3	2132-030C	644.00
4	2132-040C	1199.57
6	2132-060C	2634.98

EPDM Seals  
PTFE Seats

#### NPT Female Threaded Sockets

Size	Code	Price
1/2	2121-005C	43.47
3/4	2121-007C	57.42
1	2121-010C	71.72
1.1/4	2121-012C	144.98
1.1/2	2121-015C	144.98
2	2121-020C	189.95
3	2121-030C	578.83
4	2121-040C	1067.62

FPM Seals  
PTFE Seats

#### NPT Female Threaded Sockets

Size	Code	Price
1/2	2131-005C	48.45
3/4	2131-007C	64.53
1	2131-010C	80.69
1.1/4	2131-012C	161.05
1.1/2	2131-015C	161.05
2	2131-020C	213.21
3	2131-030C	643.99
4	2131-040C	1199.57



## Spears True Union 2000 Standard Ball Valve

**Description:** In-line double union ball valve

**Mounting:** In any position

**Maximum Fluid Pressure at 20°C:** Sizes 1/2" to 2" - 16 bar; sizes 2 1/2" to 4" - 10 bar

All sizes flanged - 10 bar

**Fluid Temperature Range:** 0°C-80°C

**Construction:**

**Body:** PVC-C

**Seals:** EPDM or FPM

**Seats:** PTFE

**End Connections:** Solvent Sockets, Solvent Spigots, NPT Female Threaded, Reinforced NPT Female Threaded

**Features:** Sizes 1/2" to 2" Solvent Socket valves also include NPT Female Threaded end connections.



### Inch Solvent Cement Sockets

EPDM Seals  
PTFE/HDPE Seats

Size	Code	Price
1/2	3629-005C	75.00
3/4	3629-007C	94.48
1	3629-010C	112.49
1 1/4	3629-012C	178.79
1 1/2	3629-015C	188.84
2	3629-020C	252.53
2 1/2	3622-025C	566.14
3	3622-030C	661.97
4	3622-040C	1199.56

### Inch Solvent Cement Sockets

FPM Seals  
PTFE/HDPE Seats

Size	Code	Price
1/2	3639-005C	83.37
3/4	3639-007C	105.00
1	3639-010C	124.95
1 1/4	3639-012C	198.71
1 1/2	3639-015C	209.82
2	3639-020C	290.32
2 1/2	3632-025C	629.02
3	3632-030C	735.57
4	3632-040C	1332.84

### Inch Solvent Cement Spigots

EPDM Seals  
PTFE/HDPE Seats

Size	Code	Price
1/2	3627-005C	75.00
3/4	3627-007C	94.48
1	3627-010C	112.49
1 1/4	3627-012C	178.79
1 1/2	3627-015C	188.84
2	3627-020C	252.53
2 1/2	3627-025C	566.14
3	3627-030C	661.97
4	3627-040C	1199.56

### Inch Solvent Cement Spigots

FPM Seals  
PTFE/HDPE Seats

Size	Code	Price
1/2	3637-005C	83.38
3/4	3637-007C	105.00
1	3637-010C	124.95
1 1/4	3637-012C	198.71
1 1/2	3637-015C	209.82
2	3637-020C	290.32
2 1/2	3637-025C	629.02
3	3637-030C	735.57
4	3637-040C	1332.84

### Flanged ANSI 150

EPDM Seals  
PTFE/HDPE Seats

Size	Code	Price
1/2	3623-005C	124.51
3/4	3623-007C	145.94
1	3623-010C	171.42
1 1/4	3623-012C	249.80
1 1/2	3623-015C	269.61
2	3623-020C	356.86
2 1/2	3623-025C	768.87
3	3623-030C	884.25
4	3623-040C	1494.76

### Flanged ANSI 150

FPM Seals  
PTFE/HDPE Seats

Size	Code	Price
1/2	3633-005C	132.86
3/4	3633-007C	156.47
1	3633-010C	183.93
1 1/4	3633-012C	269.75
1 1/2	3633-015C	290.59
2	3633-020C	394.56
2 1/2	3633-025C	831.67
3	3633-030C	957.85
4	3633-040C	1628.04

## Don't see what you want?

We have access to a huge range of products that are not featured in our Handbook.

If you don't see what you want, give our team a call.



## Spears 2000 Horizontal T-Port & L-Port Ball Valve

**Description:** In-line horizontal 3-way T-port or L-port ball valve with lockable handle and union ends

**Mounting:** In any position

**Maximum Fluid Pressure at 20°C:** Sizes 1/2" to 2" - 16 bar; sizes 2 1/2" to 4" - 10 bar

**Fluid Temperature Range:** 0°C-80°C

**Construction:**

**Body:** PVC-C

**Seals:** EPDM or FPM

**Seats:** PTFE

**End Connections:** Solvent Sockets, NPT Female Threaded, Flanged ANSI 150



EPDM Seals PTFE Seats	Inch Solvent Cement Sockets		
	Size	Code	Price
	1/2	5022T1-005C	274.42
	3/4	5022T1-007C	327.52
	1	5022T1-010C	397.56
	1 1/4	5022T1-012C	459.50
	1 1/2	5022T1-015C	537.67
	2	5022T1-020C	659.91
	2 1/2	5022T1-025C	2222.48
	3	5022T1-030C	2268.11
	4	5022T1-040C	4106.12

EPDM Seals PTFE Seats	NPT Female Threaded		
	Size	Code	Price
	1/2	5021T1-005CSR	282.87
	3/4	5021T1-007CSR	338.87
	1	5021T1-010CSR	407.34
	1 1/4	5021T1-012CSR	480.71
	1 1/2	5021T1-015CSR	570.30
	2	5021T1-020CSR	694.13
	2 1/2	5021T1-025CSR	2320.31
	3	5021T1-030CSR	2369.14
	4	5021T1-040CSR	4216.86

EPDM Seals PTFE Seats	Flanged ANSI 150		
	Size	Code	Price
	1/2	5023T1-005C	560.51
	3/4	5023T1-007C	586.52
	1	5023T1-010C	834.30
	1 1/4	5023T1-012C	1578.89
	1 1/2	5023T1-015C	1626.12
	2	5023T1-020C	2111.67
	2 1/2	5023T1-025C	3708.51
	3	5023T1-030C	3757.37
	4	5023T1-040C	5458.47

FPM Seals PTFE Seats	Inch Solvent Cement Sockets		
	Size	Code	Price
	1/2	5032T1-005C	297.20
	3/4	5032T1-007C	351.95
	1	5032T1-010C	436.63
	1 1/4	5032T1-012C	514.88
	1 1/2	5032T1-015C	588.19
	2	5032T1-020C	769.06
	2 1/2	5032T1-025C	2362.64
	3	5032T1-030C	2398.47
	4	5032T1-040C	4151.70

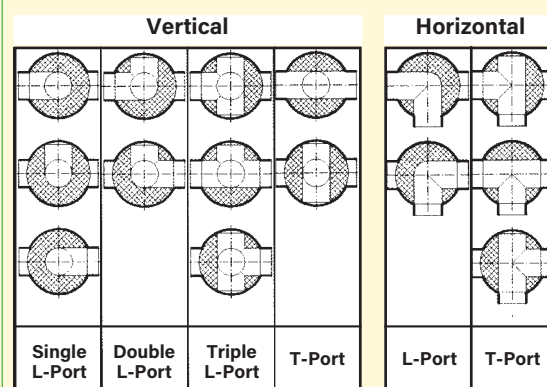
FPM Seals PTFE Seats	NPT Female Threaded		
	Size	Code	Price
	1/2	5031T1-005CSR	310.57
	3/4	5031T1-007CSR	363.38
	1	5031T1-010CSR	448.08
	1 1/4	5031T1-012CSR	539.34
	1 1/2	5031T1-015CSR	622.46
	2	5031T1-020CSR	806.56
	2 1/2	5031T1-025CSR	2460.39
	3	5031T1-030CSR	2496.20
	4	5031T1-040CSR	4262.52

FPM Seals PTFE Seats	Flanged ANSI 150		
	Size	Code	Price
	1/2	5033T1-005C	584.97
	3/4	5033T1-007C	619.17
	1	5033T1-010C	912.44
	1 1/4	5033T1-012C	1671.79
	1 1/2	5033T1-015C	1701.11
	2	5033T1-020C	2219.26
	2 1/2	5033T1-025C	4347.19
	3	5033T1-030C	4366.80
	4	5033T1-040C	5966.85

\* The above codes are for T-Port,  
for L-Port insert L i.e. 5022L1-005C



### 3-Way Port Options - Spears Valves



## Spears 2000 Vertical T-Port & L-Port Ball Valve

**Description:** In-line vertical 3-way T-port & L-port ball valve with lockable handle and union ends

**Mounting:** In any position

**Maximum Fluid Pressure at 20°C:** Sizes 1/2" to 2" - 16 bar; sizes 2 1/2" to 4" - 10 bar

**Fluid Temperature Range:** 0°C-80°C

**Construction:**

**Body:** PVC-C

**Seals:** EPDM or FPM

**Seats:** PTFE

**End Connections:** Solvent Sockets, NPT Female Threaded, Flanged ANSI 150



	Inch Solvent Cement Sockets		
	Size	Code	Price
EPDM Seals PTFE Seats	1/2	4722T1-005C	272.77
	3/4	4722T1-007C	320.00
	1	4722T1-010C	389.42
	1 1/4	4722T1-012C	470.90
	1 1/2	4722T1-015C	544.22
	2	4722T1-020C	668.04
	2 1/2	4722T1-025C	2346.33
	3	4722T1-030C	2395.22
	4	4722T1-040C	4138.70

	Inch Solvent Cement Sockets		
	Size	Code	Price
FPM Seals PTFE Seats	1/2	4732T1-005C	295.28
	3/4	4732T1-007C	348.66
	1	4732T1-010C	433.45
	1 1/4	4732T1-012C	555.65
	1 1/2	4732T1-015C	596.37
	2	4732T1-020C	775.62
	2 1/2	4732T1-025C	2372.37
	3	4732T1-030C	2418.00
	4	4732T1-040C	4181.01

	NPT Threaded Sockets		
	Size	Code	Price
EPDM Seals PTFE Seats	1/2	4721T1-005CSR	277.30
	3/4	4721T1-007CSR	332.39
	1	4721T1-010CSR	400.82
	1 1/4	4721T1-012CSR	492.06
	1 1/2	4721T1-015CSR	580.03
	2	4721T1-020CSR	705.54
	2 1/2	4721T1-025CSR	2444.12
	3	4721T1-030CSR	2492.97
	4	4721T1-040CSR	4249.50

	NPT Threaded Sockets		
	Size	Code	Price
FPM Seals PTFE Seats	1/2	4731T1-005CSR	299.85
	3/4	4731T1-007CSR	360.10
	1	4731T1-010CSR	444.86
	1 1/4	4731T1-012CSR	576.79
	1 1/2	4731T1-015CSR	632.20
	2	4731T1-020CSR	813.09
	2 1/2	4731T1-025CSR	2470.15
	3	4731T1-030CSR	2512.53
	4	4731T1-040CSR	4291.84

	Flanged ANSI 150		
	Size	Code	Price
EPDM Seals PTFE Seats	1/2	4723T1-005C	563.76
	3/4	4723T1-007C	591.45
	1	4723T1-010C	844.00
	1 1/4	4723T1-012C	1590.27
	1 1/2	4723T1-015C	1652.21
	2	4723T1-020C	2127.96
	2 1/2	4723T1-025C	3724.80
	3	4723T1-030C	3776.95
	4	4723T1-040C	5543.15

	Flanged ANSI 150		
	Size	Code	Price
FPM Seals PTFE Seats	1/2	4733T1-005C	584.97
	3/4	4733T1-007C	617.58
	1	4733T1-010C	914.11
	1 1/4	4733T1-012C	1684.80
	1 1/2	4733T1-015C	1701.11
	2	4733T1-020C	2222.48
	2 1/2	4733T1-025C	4340.69
	3	4733T1-030C	4370.02
	4	4733T1-040C	5748.52

\* The above codes are for T-Port,  
for L-Port insert L i.e. 4723L1-005C



### Additional L-Port Options

The Spears 2000 Vertical L-Port Ball Valve is also available at additional cost with:

- Double L-Port Function
- Triple L-Port Function

Please enquire for details and prices.

## Spears Gate Valve

**Description:** In-line gate valve with non rising stem

**Mounting:** In any position

**Maximum Fluid Pressure at 20°C:** Sizes up to 2" - 14 bar; 3" - 10 bar; 4" - 6 bar

**Fluid Temperature Range:** 0°C-80°C

**Construction:**

**Body:** PVC-C **Gate:** Polypropylene **Seals:** EPDM or FPM

**Bonnet:** PVC-C except 4" which is Stainless Steel 316

**End Connections:** Solvent Sockets, BSP or NPT threaded, flanged



EPDM Seals	Inch Solvent Cement Sockets		
	Size	Code	Price
	½	2022-005C	118.29
	¾	2022-007C	128.10
	1	2022-010C	140.46
	1¼	2022-012C	246.36
	1½	2022-015C	270.15
	2	2022-020C	311.57
	2½	2022-025C	1192.71
	3	2022-030C	1648.97
	4	2022-040C	2968.76

EPDM Seals	NPT Female Threaded Sockets		
	Size	Code	Price
	½	2021-005C	118.29
	¾	2021-007C	128.10
	1	2021-010C	140.46
	1¼	2021-012C	246.36
	1½	2021-015C	270.16
	2	2021-020C	311.57
	2½	2021-025C	1192.71
	3	2021-030C	1648.97
	4	2021-040C	2968.76

EPDM Seals	Flanged ANSI 150		
	Size	Code	Price
	½	2023-005C	531.18
	¾	2023-007C	573.56
	1	2023-010C	628.98
	1¼	2023-012C	850.54
	1½	2023-015C	932.01
	2	2023-020C	1085.19
	2½	2023-025C	1769.50
	3	2023-030C	2062.82
	4	2023-040C	3711.76

FPM Seals	Inch Solvent Cement Sockets		
	Size	Code	Price
	½	2032-005C	143.38
	¾	2032-007C	154.46
	1	2032-010C	170.11
	1¼	2032-012C	301.77
	1½	2032-015C	330.79
	2	2032-020C	381.28
	2½	2032-025C	1371.98
	3	2032-030C	1912.93
	4	2032-040C	3444.49

FPM Seals	NPT Female Threaded Sockets		
	Size	Code	Price
	½	2031-005C	143.38
	¾	2031-007C	154.46
	1	2031-010C	170.11
	1¼	2031-012C	301.77
	1½	2031-015C	330.77
	2	2031-020C	381.29
	2½	2031-025C	1371.96
	3	2031-030C	1912.93
	4	2031-040C	3444.51

FPM Seals	Flanged ANSI 150		
	Size	Code	Price
	½	2033-005C	583.32
	¾	2033-007C	630.59
	1	2033-010C	690.89
	1¼	2033-012C	935.29
	1½	2033-015C	1024.89
	2	2033-020C	1182.95
	2½	2033-025C	1984.62
	3	2033-030C	2290.93
	4	2033-040C	4122.34



## Spears Butterfly Valve

**Description:** Wafer style butterfly valve

**Mounting:** In any position, between flanges to ANSI 150

**Maximum Fluid Pressure at 20°C:** 10 bar

**Fluid Temperature Range:** 0°C-80°C

**Construction:**

**Body:** PVC-C

**Disc:** Glass reinforced PVC-C

**Seals:** EPDM or FPM

**Shaft:** Stainless Steel 316

**End Connections:** Flange mounted (flanges not included)



EPDM Seals	Lever Operated		
	Size	Code	Price
	1½	722311-015C	545.89
	2	722311-020C	581.73
	2½	722311-025C	617.57
	3	722311-030C	672.91
	4	722311-040C	777.19
	6	722311-060C	1150.37
	8	722311-080C	1952.06

EPDM Seals	Gear Operated		
	Size	Code	Price
	1½	722321-015C	1652.21
	2	722321-020C	1707.60
	2½	722321-025C	1733.67
	3	722321-030C	1756.47
	4	722321-040C	1883.59
	6	722321-060C	2343.09
	8	722321-080C	2724.32
	10	722321-100C	3812.80
	12	722321-120C	5386.79

Also available bare shaft for remote or actuator mounting

FPM Seals	Lever Operated		
	Size	Code	Price
	1½	723311-015C	1104.74
	2	723311-020C	1140.55
	2½	723311-025C	1238.30
	3	723311-030C	1326.29
	4	723311-040C	1658.69
	6	723311-060C	2652.70
	8	723311-080C	4487.35

FPM Seals	Gear Operated		
	Size	Code	Price
	1½	723321-015C	2255.09
	2	723321-020C	2323.52
	2½	723321-025C	2359.38
	3	723321-030C	2551.66
	4	723321-040C	2955.72
	6	723321-060C	4161.48
	8	723321-080C	5256.42
	10	723321-100C	9740.53
	12	723321-120C	12660.42



### Industrial Grade Butterfly Valve

The Spears butterfly valve uses a solid 316L grade stainless steel shaft that is completely isolated (dry stem) from the process fluid.

## Spears Diaphragm Valve

**Description:** In-line diaphragm valve with position indicator

**Mounting:** In any position

**Maximum Fluid Pressure at 20°C:** Sizes 1/2" to 2" - 16 bar (PTFE diaphragm - 10 bar); sizes 2 1/2" to 4" - 10 bar; size 6" - 6.5 bar; size 8" - 5 bar. All flanged valves - 10 bar

**Fluid Temperature Range:** 0°C-80°C

**Construction:**

**Body:** PVC-C

**Seals:** EPDM, FPM, PTFE (EPDM backed) or PTFE (FPM backed)

**End Connections:** Solvent Sockets, Solvent Spigots, NPT Female Threaded, Flanged

**Features:** Sizes 1/2" to 2" Solvent Socket valves also include NPT Female Threaded end connections



EPDM Diaphragm EPDM Seals	Inch Solvent Cement Unions		
	Size	Code	Price
	1/2	2729-005C	270.47
	3/4	2729-007C	301.09
	1	2729-010C	348.67
	1 1/4	2729-012C	523.05
	1 1/2	2729-015C	537.67
	2	2729-020C	573.56

PTFE Diaphragm EPDM Backed EPDM Seals	Inch Solvent Cement Unions		
	Size	Code	Price
	1/2	2729T-005C	389.42
	3/4	2729T-007C	430.17
	1	2729T-010C	523.05
	1 1/4	2729T-012C	721.79
	1 1/2	2729T-015C	731.59
	2	2729T-020C	804.93

EPDM Diaphragm EPDM Seals	Flanged ANSI 150		
	Size	Code	Price
	1/2	2723-005C	327.52
	3/4	2723-007C	366.64
	1	2723-010C	451.34
	1 1/4	2723-012C	576.79
	1 1/2	2723-015C	583.32
	2	2723-020C	653.35
	2 1/2	2723-025C	1186.21
	3	2723-030C	1792.30
	4	2723-040C	2460.39
	6	2723-060C	6967.31
	8	2723-080C	12543.12

PTFE Diaphragm EPDM Backed EPDM Seals	Flanged ANSI 150		
	Size	Code	Price
	1/2	2793T-005C	472.53
	3/4	2793T-007C	505.15
	1	2793T-010C	620.79
	1 1/4	2793T-012C	782.11
	1 1/2	2793T-015C	935.29
	2	2793T-020C	1037.95
	2 1/2	2793T-025C	2049.81
	3	2793T-030C	2695.03
	4	2793T-040C	3581.43
	6	2793T-060C	12315.01
	8	2793T-080C	14091.06

FPM Diaphragm FPM Seals	Inch Solvent Cement Unions		
	Size	Code	Price
	1/2	2739-005C	347.04
	3/4	2739-007C	369.88
	1	2739-010C	449.69
	1 1/4	2739-012C	674.56
	1 1/2	2739-015C	700.63
	2	2739-020C	718.57

PTFE Diaphragm FPM Backed FPM Seals	Inch Solvent Cement Unions		
	Size	Code	Price
	1/2	2739VT-005C	464.37
	3/4	2739VT-007C	496.95
	1	2739VT-010C	599.61
	1 1/4	2739VT-012C	811.45
	1 1/2	2739VT-015C	837.52
	2	2739VT-020C	987.41

FPM Diaphragm FPM Seals	Flanged ANSI 150		
	Size	Code	Price
	1/2	2733-005C	361.73
	3/4	2733-007C	404.12
	1	2733-010C	503.48
	1 1/4	2733-012C	659.91
	1 1/2	2733-015C	676.18
	2	2733-020C	733.23
	2 1/2	2733-025C	1324.72
	3	2733-030C	1991.14
	4	2733-040C	2730.86
	6	2733-060C	7742.90
	8	2733-080C	13934.57

PTFE Diaphragm FPM Backed FPM Seals	Flanged ANSI 150		
	Size	Code	Price
	1/2	2793VT-005C	523.05
	3/4	2793VT-007C	558.87
	1	2793VT-010C	687.61
	1 1/4	2793VT-012C	865.23
	1 1/2	2793VT-015C	1029.78
	2	2793VT-020C	1153.64
	2 1/2	2793VT-025C	2424.54
	3	2793VT-030C	2981.79
	4	2793VT-040C	3822.58
	6	2793VT-060C	9450.50
	8	2793VT-080C	15655.26

Spears Needle Valve

**Description:** Globe or Angle pattern flow control valve  
**Mounting:** In any position  
**Maximum Fluid Pressure at 20°C:** 16 bar  
**Fluid Temperature Range:** 0°C - 80°C  
**Construction:**  
**Body:** PVC-C  
**Seal:** PTFE  
**End Connections:** Female NPT Threaded  
**Feature:** Built-in panel or bracket mounting nut



Globe Pattern Valve

Size	Code	Price
1/4	5591-002C	154.11
3/8	5591-003C	154.11



Angle Pattern Valve

Size	Code	Price
1/4	5691-002C	154.11
3/8	5691-003C	154.11

Will it be in stock?

Last year we shipped 1 million metres of pipe, and more than

95%

of orders were complete, first time!



## Spears Laboratory Ball Valve

**Description:** In-line ball valve with accessories **Mounting:** In any position  
**Maximum Fluid Pressure at 20°C:** 10 bar **Fluid Temperature Range:** 0°C - 80°C  
**Construction:**  
**Body:** PVC-C **Seals:** EPDM or FPM **Seats:** PTFE  
**End Connections:** Solvent Socket or NPT Female Threaded  
**Option:** Kit including hose nozzles and nipples



### Inch Solvent Cement Sockets

Valve only  
EPDM Seals  
PTFE Seats

Size	Code	Price
1/4	1522-002C	45.65
3/8	1522-003C	63.87

### NPT Threaded Sockets

Valve, inc. kit  
EPDM Seals  
PTFE Seats

Size	Code	Price
1/4	1529-002C	56.70

### NPT Threaded Sockets

Valve, inc. kit  
FPM Seals  
PTFE Seats

Size	Code	Price
1/4	1539-002C	57.99

### Inch Solvent Cement Sockets

Valve only  
FPM Seals  
PTFE Seats

Size	Code	Price
1/4	1532-002C	50.52
3/8	1532-003C	70.74

### NPT Threaded Sockets

Valve only  
EPDM Seals  
PTFE Seats

Size	Code	Price
1/4	1521-002C	45.65
3/8	1521-003C	63.87

### NPT Threaded Sockets

Valve only  
FPM Seals  
PTFE Seats

Size	Code	Price
1/4	1531-002C	50.52
3/8	1531-003C	70.74

## Spears Globe Valve

**Description:** In-line globe throttling valve  
**Mounting:** In any position  
**Maximum Fluid Pressure at 20°C:** 10 bar  
**Fluid Temperature Range:** 0°C-80°C  
**Construction:**  
**Body:** PVC-C  
**Seats & Seals:** EPDM or FPM  
**Stem and Plug:** PVC-C  
**End Connections:** Flanged ANSI 150  
**Features:** Fully serviceable, excellent flow regulating characteristics.  
 Suitable for vacuum use.



### Flanged ANSI 150

vEPDM Seals

Size	Code	Price
2 1/2	6023-025C	1161.77
3	6023-030C	1161.77
4	6023-040C	1508.83
6	6023-060C	2027.01

### Flanged ANSI 150

FPM Seals

Size	Code	Price
2 1/2	6033-025C	1292.10
3	6033-030C	1292.10
4	6033-040C	1658.69
6	6033-060C	2369.13



## Spears Y-Pattern Valve

**Description:** In-line Y-Pattern throttling valve

**Mounting:** In any position

**Maximum Fluid Pressure at 20°C:** Sizes 1/2" to 2" - 10 bar; sizes 2 1/2" to 4" - 6 bar

**Fluid Temperature Range:** 0°C-80°C

**Construction:**

**Body:** PVC-C

**Seats & Seals:** EPDM or FPM

**End Connections:** Solvent Sockets, Reinforced NPT Female Threaded, Flanged

**Features:** Globe valve design provides proportional opening to seating disc travel for more accurate flow control

Special semi-rigid seating disc eliminates vibration for more accurate flow control

Y-Pattern reduces flow restriction over standard globe valve



### Inch Solvent Cement Sockets

EPDM

Size	Code	Price
1/2	1722-005C	227.17
3/4	1722-007C	267.57
1	1722-010C	320.34
1 1/4	1722-012C	395.91
1 1/2	1722-015C	523.05
2	1722-020C	741.37
3	1722-030C	1585.43
4	1722-040C	2691.79

### Inch Solvent Cement Sockets

FPM

Size	Code	Price
1/2	1732-005C	239.51
3/4	1732-007C	286.09
1	1732-010C	342.17
1 1/4	1732-012C	420.36
1 1/2	1732-015C	554.04
2	1732-020C	790.25
3	1732-030C	1723.89
4	1732-040C	2929.67

### NPT Female Threaded

Stainless Steel Reinforced

EPDM

Size	Code	Price
1/2	1721-005CSR	233.32
3/4	1721-007CSR	276.66
1	1721-010CSR	337.31
1 1/4	1721-012CSR	410.62
1 1/2	1721-015CSR	563.76
2	1721-020CSR	787.02
3	1721-030CSR	1701.11
4	1721-040CSR	2681.96

### NPT Female Threaded

Stainless Steel Reinforced

FPM

Size	Code	Price
1/2	1731-005CSR	248.97
3/4	1731-007CSR	295.61
1	1731-010CSR	342.17
1 1/4	1731-012CSR	441.56
1 1/2	1731-015CSR	594.77
2	1731-020CSR	830.98
3	1731-030CSR	1841.20
4	1731-040CSR	3050.23

### Flanged ANSI 150

EPDM

Size	Code	Price
1/2	1723-005C	373.13
3/4	1723-007C	426.90
1	1723-010C	516.56
1 1/4	1723-012C	619.17
1 1/2	1723-015C	837.52
2	1723-020C	1067.24
3	1723-030C	2053.06
4	1723-040C	3330.52

### Flanged ANSI 150

FPM

Size	Code	Price
1/2	1733-005C	386.17
3/4	1733-007C	444.86
1	1733-010C	539.34
1 1/4	1733-012C	642.02
1 1/2	1733-015C	868.48
2	1733-020C	1116.14
3	1733-030C	2193.20
4	1733-040C	3542.29

## Spears True Union Check (Non-Return) Valve

**Description:** In-line cone check valve **Mounting:** In a vertical position  
**Maximum Fluid Pressure at 20°C:** Sizes up to 2" - 16 bar;  
 sizes 2½" to 6" - 10 bar  
**Fluid Temperature Range:** 0°C-80°C  
**Construction:**  
**Body:** PVC-C **Seals:** EPDM or FPM  
**End Connections:** Solvent Sockets, NPT Female Threaded, Flanged  
**Option:** Silicon-free



### Inch Solvent Cement Sockets

EPDM Seals

Size	Code	Price
½	2229-005C	116.69
¾	2229-007C	139.43
1	2229-010C	164.56
1¼	2229-012C	283.52
1½	2229-015C	283.52
2	2229-020C	379.64
2½	2222-025C	793.53
3	2222-030C	793.53
4	2222-040C	1740.18
6*	2222-060C	3099.13

\*Venturied to 4"

### Inch Solvent Cement Sockets

FPM Seals

Size	Code	Price
½	2239-005C	129.69
¾	2239-007C	155.12
1	2239-010C	182.84
1¼	2239-012C	314.83
1½	2239-015C	314.83
2	2239-020C	422.03
2½	2232-025C	881.51
3	2232-030C	881.51
4	2232-040C	1935.68
6*	2232-060C	3473.88

\*Venturied to 4"

### NPT Female Threaded Sockets

EPDM Seals

Size	Code	Price
½	2229-005C	116.69
¾	2229-007C	139.43
1	2229-010C	164.56
1¼	2229-012C	283.52
1½	2229-015C	283.52
2	2229-020C	379.64
2½	2221-025C	793.53
3	2221-030C	793.53
4	2221-040C	1740.18

### NPT Female Threaded Sockets

FPM Seals

Size	Code	Price
½	2239-005C	129.69
¾	2239-007C	155.12
1	2239-010C	182.84
1¼	2239-012C	314.83
1½	2239-015C	314.83
2	2239-020C	422.03
2½	2231-025C	881.51
3	2231-030C	881.51
4	2231-040C	1935.68

### Flanged ANSI 150

EPDM Seals

Size	Code	Price
½	2223-005C	139.81
¾	2223-007C	166.89
1	2223-010C	199.11
1¼	2223-012C	337.31
1½	2223-015C	360.10
2	2223-020C	635.49
2½	2223-025C	1010.24
3	2223-030C	1283.97
4	2223-040C	2124.73
6	2223-060C	3656.37

### Flanged ANSI 150

FPM Seals

Size	Code	Price
½	2233-005C	174.69
¾	2233-007C	211.17
1	2233-010C	245.72
1¼	2233-012C	417.12
1½	2233-015C	449.70
2	2233-020C	681.09
2½	2233-025C	1150.38
3	2233-030C	1407.81
4	2233-040C	2281.18
6	2233-060C	3959.42

### Foot Valve Screen

Fits all socket ball check valves

Size	Code	Price
½	FVS-005C	99.10
¾	FVS-007C	106.69
1	FVS-010C	121.34
1¼	FVS-012C	187.22
1½	FVS-015C	194.24
2	FVS-020C	214.51
2½	FVS-025C	312.48
3	FVS-030C	349.09
4	FVS-040C	498.25



## Spears True Union 2000 Industrial Ball Check Valve

**Description:** In-line ball check valve

**Mounting:** Vertical

**Maximum Fluid Pressure at 20°C:** Sizes 1/2" to 2" - 16 bar; sizes 2 1/2" to 6" - 10 bar

All sizes flanged - 10 bar

**Fluid Temperature Range:** 0°C-80°C

**Construction:**

**Body:** PVC-C

**Seals:** EPDM or FPM

**End Connections:** Solvent Sockets, Solvent Spigots, NPT Female Threaded, Reinforced NPT Female Threaded, Flanged

**Features:** Sizes 1/2" to 2" Solvent Socket valves also include NPT Female Threaded end connections. All valves are assembled with Silicon-free, water soluble lubricant



### Inch Solvent Cement Sockets

EPDM Seals

Size	Code	Price
1/2	4529-005C	100.65
3/4	4529-007C	120.63
1	4529-010C	142.10
1 1/4	4529-012C	244.39
1 1/2	4529-015C	244.39
2	4529-020C	327.52
2 1/2	4522-025C	684.36
3	4522-030C	684.36
4	4522-040C	1502.29
6	4522-060C	6198.25

### Inch Solvent Cement Sockets

FPM Seals

Size	Code	Price
1/2	4539-005C	112.09
3/4	4539-007C	133.92
1	4539-010C	157.73
1 1/4	4539-012C	271.48
1 1/2	4539-015C	271.48
2	4539-020C	365.02
2 1/2	4532-025C	598.82
3	4532-030C	760.93
4	4532-040C	1671.79
6	4532-060C	4595.42

### Inch Solvent Cement Spigots

EPDM Seals

Size	Code	Price
1/2	4527-005C	100.65
3/4	4527-007C	120.63
1	4527-010C	142.10
1 1/4	4527-012C	244.39
1 1/2	4527-015C	244.39
2	4527-020C	327.52
2 1/2	4527-025C	684.36
3	4527-030C	684.36
4	4527-040C	1502.29
6	4527-060C	6198.25

### Inch Solvent Cement Spigots

FPM Seals

Size	Code	Price
1/2	4537-005C	112.10
3/4	4537-007C	133.92
1	4537-010C	157.73
1 1/4	4537-012C	271.48
1 1/2	4537-015C	271.48
2	4537-020C	365.02
2 1/2	4537-025C	760.92
3	4537-030C	749.48
4	4537-040C	1671.79
6	4537-060C	6885.82

### Flanged ANSI 150

EPDM Seals

Size	Code	Price
1/2	4523-005C	124.78
3/4	4523-007C	148.96
1	4523-010C	177.95
1 1/4	4523-012C	299.85
1 1/2	4523-015C	320.33
2	4523-020C	567.05
2 1/2	4523-025C	1111.26
3	4523-030C	1147.08
4	4523-040C	1896.61
6	4523-060C	10108.79

### Flanged ANSI 150

FPM Seals

Size	Code	Price
1/2	4533-005C	156.08
3/4	4533-007C	188.64
1	4533-010C	219.30
1 1/4	4533-012C	373.13
1 1/2	4533-015C	400.82
2	4533-020C	607.77
2 1/2	4533-025C	1026.51
3	4533-030C	1257.87
4	4533-040C	2036.74
6	4533-060C	10509.61

## Hayward Simplex Basket Strainer

**Description:** In-line strainer with serviceable basket filter

**Mounting:** Vertical

**Maximum Fluid Pressure at 20°C:** 10 bar

**Fluid Temperature Range:** 0°C-80°C

**Construction:**

**Body:** PVC-C

**Strainer Basket:** PVC-C or 316 Stainless Steel

**Strainer Mesh Sizes:** PVC-C: 1/32", 1/16", 1/8" or 3/16";

Stainless Steel: 20, 40, 60, 80, 100, 150, 200, 325 Mesh

**Seals:** FPM

**End Connections:** Solvent Socket, NPT Threaded or Flanged

**Gauge:** Optional



**Duplex Style Available.**  
**Please enquire for prices.**

### Inch Solvent Cement Sockets

PVC-C Body  
PVC-C Basket

Size	Code	Price
1/2	SB2050ST	905.13
3/4	SB2075ST	905.13
1	SB2100ST	905.13
1 1/4	SB125ST	1612.09
1 1/2	SB2150ST	1612.09
2	SB2200ST	1612.09
3	SB2300S	3573.12
4	SB2400S	3573.12

### NPT Female Threaded

PVC-C Body  
PVC-C Basket

Size	Code	Price
1/2	SB2050ST	905.13
3/4	SB2075ST	905.13
1	SB2100ST	905.13
1 1/4	SB125ST	1612.09
1 1/2	SB2150ST	1612.09
2	SB2200ST	1612.09
3	SB2300T	3573.13
4	SB2400T	3573.13

### Spare PVC-C Basket

New Style

Size	Code	Price
1/2, 3/4, 1	BS21001/_	on application
1 1/2, 2	BS22001/_	
3, 4	BS24001/_	
6	BS26001/_	
8	BS28001/_	

To specify the mesh size, add to part number, e.g. 3" basket c/w 1/32 mesh = BS103001/32

### Spare Stainless Steel Basket

New Style

Size	Code	Price
1/2, 3/4, 1	BS710/_	on application
1 1/2, 2	BS720/_	
3, 4	BS740/_	
6	BS760/_	
8	BS780/_	

To specify the mesh size, add to part number, e.g. 2" basket c/w 60 mesh = BS702060

\* Note that the new style strainer requires the additional use of a PVC-C adaptor

### Optional Extras

Size	Code	Price
1/2 - 1	BS710(XX)	on application
1 1/4 - 2	BS720(XX)	
2 1/2 - 4	BS740(XX)	
6	BS7600(XX)	
8	BS7800(XX)	

To replace the plastic basket with one stainless steel basket, add the basket price to the strainer price (XX) Replace with mesh required. For 100 mesh replace (XX) with 100

### Flanged ANSI 150

PVC-C Body  
PVC-C Basket

Size	Code	Price
1/2	SB2050F	992.47
3/4	SB2075F	992.47
1	SB2100F	992.44
1 1/4	SB2125F	1815.71
1 1/2	SB2150F	1815.71
2	SB2200F	1815.71
3	SB2300F	4976.51
4	SB2400F	4752.79
6	SB2600FT	9793.43
8	SB2800FT	12904.44



### Drain Kits

Ideal for controlled draining on basket strainers. Includes ball valve with locking lever, drilled ball and nipple piece. Please enquire for details.



## Spears Y-Strainer

**Description:** In-line strainer

**Mounting:** In any position

**Maximum Fluid Pressure at 20°C:** 10 bar

**Fluid Temperature Range:** 0°C-80°C

**Construction:**

**Body:** PVC-C

**Seals:** EPDM or FPM

**Strainer:** PVC-C or Stainless Steel - 8, 12, 20 or 30 mesh

**End Connections:** Solvent Socket, Flanged ANSI 150 or NPT reinforced female threaded



PVC-C Screen  
EPDM Seals

### Inch Solvent Cement Sockets

Size	Code	Price
1/2	YS22C20-005C*	166.11
3/4	YS22C20-007C*	182.36
1	YS22C20-010C*	231.69
1 1/4	YS22C20-012C*	337.30
1 1/2	YS22C20-015C*	360.54
2	YS22C20-020C*	511.76
3	YS22C20-030C	809.49
4	YS22C20-040C	1402.63

\*Note: Price is for PVC-C 20 mesh strainer.  
Please enquire for alternative mesh prices.

### Flanged ANSI 150

PVC-C Screen  
EPDM Seals

Size	Code	Price
1/2	YS23C20-005C	406.09
3/4	YS23C20-007C	431.50
1	YS23C20-010C	460.68
1 1/4	YS23C20-012C	766.76
1 1/2	YS23C20-015C	874.39
2	YS23C20-020C	1101.58
3	YS23C20-030C	1413.99
4	YS23C20-040C	2263.47

### Inch Solvent Cement Sockets

St/St Screen  
EPDM Seals

Size	Code	Price
1/2	YS22S20-005C	370.12
3/4	YS22S20-007C	421.39
1	YS22S20-010C	521.08
1 1/4	YS22S20-012C	751.71
1 1/2	YS22S20-015C	775.93
2	YS22S20-020C	972.39
3	YS22S20-030C	1184.52
4	YS22S20-040C	1961.83

### Flanged ANSI 150

St/St Screen  
EPDM Seals

Size	Code	Price
1/2	YS23S20-005C	533.89
3/4	YS23S20-007C	568.05
1	YS23S20-010C	630.66
1 1/4	YS23S20-012C	972.39
1 1/2	YS23S20-015C	1029.10
2	YS23S20-020C	1303.27
3	YS23S20-030C	1708.43
4	YS23S20-040C	2665.11

PVC-C Screen  
FPM Seals

### Inch Solvent Cement Sockets

Size	Code	Price
1/2	YS32C20-005C*	185.83
1	YS32C20-010C*	261.69
3/4	YS32C20-007C*	205.39
1 1/4	YS32C20-012C*	404.75
1 1/2	YS32C20-015C*	421.02
2	YS32C20-020C*	540.81
3	YS32C20-030C	868.81
4	YS32C20-040C	1507.30

\*Note: Price is for PVC-C 20 mesh strainer.  
Please enquire for alternative mesh prices.

### Flanged ANSI 150

PVC-C Screen  
FPM Seals

Size	Code	Price
1/2	YS33C20-005C	482.61
3/4	YS33C20-007C	501.13
1	YS33C20-010C	501.98
1 1/4	YS33C20-012C	861.31
1 1/2	YS33C20-015C	976.65
2	YS33C20-020C	1214.40
3	YS33C20-030C	1520.55
4	YS33C20-040C	2602.49

### Inch Solvent Cement Sockets

St/St Screen  
FPM Seals

Size	Code	Price
1/2	YS32S20-005C	418.93
3/4	YS32S20-007C	474.09
1	YS32S20-010C	585.14
1 1/4	YS32S20-012C	795.84
1 1/2	YS32S20-015C	868.43
2	YS32S20-020C	1060.66
3	YS32S20-030C	1274.19
4	YS32S20-040C	2109.88

### Flanged ANSI 150

St/St Screen  
FPM Seals

Size	Code	Price
1/2	YS33S20-005C	595.11
3/4	YS33S20-007C	633.55
1	YS33S20-010C	703.30
1 1/4	YS33S20-012C	1081.95
1 1/2	YS33S20-015C	1204.43
2	YS33S20-020C	1412.28
3	YS33S20-030C	1836.55
4	YS33S20-040C	2867.27



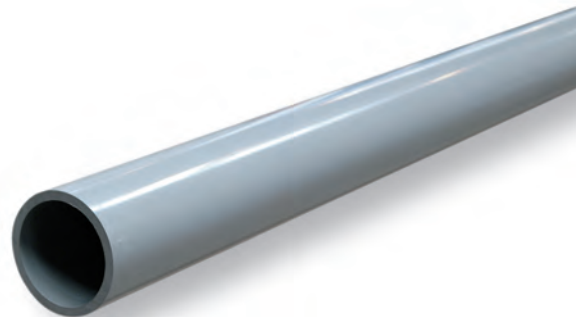
## Optional Mesh Codes

To specify the mesh size, add the following to the part number:

Mesh Size	Hole Size	Part Number
8	2.39mm	8
12	1.57mm	12
20	0.84mm	20
30	0.61mm	30
e.g. YS22C8 - 005C		

\* PN10

Please note only the Durapipe range is WRAS approved, VDL range is WRAS approval pending.



## Corzan Pipe PN16

Plain ended - standard length 5m



Size	Nominal Bore	Maximum Pressure (bar)	Weight/m	O.D. (mm)	Minimum Wall (mm)	Durapipe Code	Price/m	Code	Price/m
16	13.6	16	0.11	16.0	1.2	38.560.305	10.34	-	
20	17.0	16	0.17	20.0	1.5	38.560.306	16.42	7095002001	9.48
25	21.2	16	0.26	25.0	1.9	38.560.307	24.29	7095002501	14.84
32	27.2	16	0.42	32.0	2.4	38.560.308	24.95	7095003201	16.03
40	34.0	16	0.63	40.0	3.0	38.560.309	37.05	7095004001	24.51
50	42.6	16	0.97	50.0	3.7	38.560.310	57.00	7095005001	37.24
63	53.6	16	1.53	63.0	4.7	38.560.311	91.03	7095006301	59.35
75	63.8	16	2.20	75.0	5.6	38.560.312	133.53	7095007501	83.84
90	76.6	16	2.88	90.0	6.7	38.560.313	206.36	7095009001	129.20
110	93.6	16	4.31	110.0	8.2	38.560.314	309.46	7095011001	194.45
160	144.6	10	6.06	160.0	7.7	38.555.317	460.80	-	

## Pipework Support

PVC-C pipework requires more support than for metallic systems. As working temperature increases, the distance between supports is reduced. For temperatures indicated by \* continuous support is required.

### PN 16 PIPE

Pipe Size	Support Centres/m							
	20°C	30°C	40°C	50°C	60°C	70°C	80°C	90°C
16	0.75	0.70	0.70	0.65	0.60	*	*	*
20	0.80	0.75	0.75	0.70	0.65	0.50	0.50	*
25	0.85	0.80	0.80	0.75	0.70	0.60	0.55	*
32	0.95	0.90	0.90	0.85	0.80	0.70	0.65	*
40	1.05	1.00	1.00	0.95	0.90	0.80	0.75	0.50
50	1.20	1.05	1.10	1.05	1.00	0.90	0.85	0.60
63	1.35	1.30	1.25	1.20	1.15	1.10	1.05	0.80
75	1.45	1.40	1.35	1.30	1.25	1.15	1.10	0.85
90	1.60	1.55	1.50	1.40	1.35	1.20	1.15	0.90
110	1.80	1.75	1.70	1.60	1.55	1.35	1.30	1.05
160	2.00	1.90	1.85	1.80	1.75	1.60	1.40	1.10

## Temperature De-Rating Factors

Pressure ratings for Durapipe PVC-C pipework systems are always quoted at 20°C. As working temperature increases, the maximum working pressure decreases by the factor indicated.

Working Temperature (°C)	Pressure De-Rating Factor
20	1.00
30	0.86
40	0.71
50	0.56
60	0.43
70*	0.33
80**	0.25
85***	0.21
95****	0.21

Durapipe pressure de-rating factors are based on a design life of 50 years except for:

\* 15 years    \*\* 5 years    \*\*\* 3 years    \*\*\*\* 1 year

Consult our technical department to discuss higher pressures and the effect on design life.

**Tee 90°**


Size	Code	Price
20	7008202001	5.92
25	7008202501	6.67
32	7008203201	8.67
40	7008204001	10.75
50	7008205001	19.95
63	7008206301	32.96
75	7008207501	76.90
90	7008209001	127.91
110	7008211001	206.36

**Reducing Tee 90°**


Size	Code	Price
25x20	7008702511	11.43
32x20	7008703221	17.71
32x25	7008703211	17.71
40x25	7008704021	28.93
40x32	7008704011	28.93
50x25	7008705031	37.95
50x32	7008705021	37.95
63x32	7008706331	58.84
63x50	7008706311	58.84

**Elbow 90°**


Size	Code	Price
20	7005102001	4.90
25	7005102501	5.14
32	7005103201	6.67
40	7005104001	12.04
50	7005105001	15.61
63	7005106301	25.08
75	7005107501	57.55
90	7005109001	94.73
110	7005111001	154.38

**Elbow 45°**


Size	Code	Price
20	7006702001	7.42
25	7006702501	7.96
32	7006703201	10.22
40	7006704001	14.60
50	7006705001	17.92
63	7006706301	27.19
75	7006707501	62.69
90	7006709001	93.54
110	7006711001	151.82

**Socket**


Size	Code	Price
20	7011602001	4.11
25	7011602501	4.35
32	7011603201	5.32
40	7011604001	7.96
50	7011605001	9.21
63	7011606301	15.85
75	7011607501	36.88
90	7011609001	62.72
110	7011611001	92.26

**Union**

EPDM



Size	Code	Price
20	7020102001	20.55
25	7020102501	23.29
32	7020103201	32.28
40	7020104001	38.32
50	7020105001	53.63
63	7020106301	85.50

FPM available on request

**Reducing Bush**


Size	Code	Price
25x20	7016702551	4.11
32x20	7016703221	5.50
32x25	7016703211	5.62
40x25	7016704021	6.44
40x32	7016704011	6.09
50x32	7016705021	8.49
50x40	7016705011	7.97
63x32	7016706331	10.51
63x40	7016706321	10.51
63x50	7016706311	10.51
75x50	7016707521	16.64
75x63	7016707511	16.64
90x50	7016709031	31.58
90x63	7016709021	31.58
90x75	7016709011	31.72
110x63	7016711031	43.87
110x90	7016711011	43.87

**Cap**


Size	Code	Price
20	7018102001	4.11
25	7018102501	5.14
32	7018103201	7.97
40	7018104001	11.25
50	7018105001	15.85
63	7018106301	21.48
75	7018107501	49.01
90	7018109001	53.46
110	7018111001	79.39

**Socket**

Plain Socket x BSP Female Thread



Size	Code	Price
20x1/2	7014102001	14.95
25x3/4	7014102501	17.55
32x1	7014103201	22.00
40x1.1/4	7014104001	27.00
50x1.1/2	7014105001	36.33
63x2	7014106301	44.05

**Socket Union**

Plain Socket x BSP Female Thread



Size	Code	Price
20x1/2	7020602001	35.35
25x3/4	7020602501	38.89
32x1	7020603201	47.91
40x1.1/4	7020604001	57.19
50x1.1/2	7020605001	79.69
63x2	7020606301	115.39

EPDM seals  
FPM available to order

**Nipple**

Plain Socket/Spigot x BSP Male



Size	Code	Price
20x1/2	7015202021	6.87
25/32x3/4	7015202511	8.38
25/32x1	7015202501	8.38
32/40x1	7015203211	9.52
32/40x1.1/2	7015203201	9.52
40/50x1.1/4	7015204011	12.51
40/50x1.1/2	7015204001	12.51
50/63x1.1/2	7015205021	18.38
50/63x2	7015205011	18.38
63/75x2	7015206321	27.05

Please note: VDL range is WRAS approval pending.

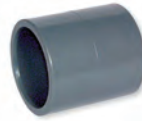


### Tee 90°



Size	Code	Price
16	38.122.305	9.42
20	38.122.306	10.34
25	38.122.307	11.22
32	38.122.308	14.79
40	38.122.309	22.40
50	38.122.310	34.17
63	38.122.311	56.38
75	38.122.312	130.30
90	38.122.313	219.94
110	38.122.314	354.45
160	38.122.317	653.47

### Socket



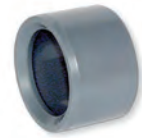
Size	Code	Price
16	38.100.305	6.67
20	38.100.306	6.67
25	38.100.307	7.18
32	38.100.308	9.04
40	38.100.309	13.49
50	38.100.310	16.16
63	38.100.311	26.88
75	38.100.312	62.74
90	38.100.313	107.68
110	38.100.314	166.18
160	38.100.317	397.01

### Reducing Tee 90°



Size	Code	Price
25x20	38.124.415	19.66
32x20	38.124.418	31.89
32x25	38.124.419	31.89
40x20	38.124.421	52.08
40x25	38.124.422	52.08
50x25	38.124.425	68.33
50x32	38.124.426	68.33
63x25	38.124.429	105.97
63x32	38.124.430	105.96
75x25	38.124.434	191.64
90x25	38.124.439	283.66
110x25	38.124.445	383.82

### Reducing Bush



Size	Code	Price
20x16	38.109.412	5.37
25x20	38.109.415	6.67
32x20	38.109.418	9.90
32x25	38.109.419	9.90
40x20	38.109.421	10.72
40x25	38.109.422	10.72
40x32	38.109.423	10.72
50x32	38.109.426	13.49
50x40	38.109.427	13.49
63x32	38.109.430	18.00
63x40	38.109.431	18.00
63x50	38.109.432	18.00
75x50	38.109.437	28.67
75x63	38.109.438	28.67
90x50	38.109.442	53.90
90x63	38.109.443	53.90
90x75	38.109.444	53.90
110x63	38.109.449	75.48
110x75	38.109.450	75.48
110x90	38.109.451	75.48
160x110	38.109.474	184.68

### Elbow 90°



Size	Code	Price
16	38.115.305	7.18
20	38.115.306	8.09
25	38.115.307	9.04
32	38.115.308	11.22
40	38.115.309	20.25
50	38.115.310	26.54
63	38.115.311	42.55
75	38.115.312	98.68
90	38.115.313	162.72
110	38.115.314	264.74
160	38.115.317	554.51

### Union

EPDM



Size	Code	Price
16	38.205.305	31.49
20	38.205.306	34.96
25	38.205.307	39.61
32	38.205.308	55.30
40	38.205.309	65.44
50	38.205.310	92.00
63	38.205.311	145.60

FPM available on request

### Elbow 45°



Size	Code	Price
20	38.119.306	12.61
25	38.119.307	13.49
32	38.119.308	17.49
40	38.119.309	25.15
50	38.119.310	30.39
63	38.119.311	46.58
75	38.119.312	107.66
90	38.119.313	160.64
110	38.119.314	260.53
160	38.119.317	671.47

### Cap



Size	Code	Price
20	38.140.306	6.67
25	38.140.307	9.04
32	38.140.308	13.49
40	38.140.309	18.90
50	38.140.310	26.88
63	38.140.311	36.80
75	38.140.312	92.00
90	38.140.313	92.00
110	38.140.314	136.59

### Tee 90°

Plain Socket x BSP  
Female Thread



Size	Code	Price
16x $\frac{3}{8}$	38.121.602	13.05
16x $\frac{1}{2}$	38.121.305	13.05
20x $\frac{1}{2}$	38.121.306	16.20
25x $\frac{3}{4}$	38.121.307	19.96
32x1	38.121.308	31.21
40x1.1/4	38.121.309	54.18
50x1.1/2	38.121.310	71.27
63x2	38.121.311	112.85

### Socket Union

Plain Socket x BSP  
Female Thread



Size	Code	Price
20x $\frac{1}{2}$	38.202.306	63.66
25x $\frac{3}{4}$	38.202.307	70.05
32x1	38.202.308	86.29
40x1.1/4	38.202.309	103.03
50x1.1/2	38.202.310	143.55
63x2	38.202.311	196.27

EPDM seals  
FPM available to order

### Elbow 90°

Plain Socket x BSP  
Female Thread



Size	Code	Price
16x $\frac{3}{8}$	38.178.602	17.38
16x $\frac{1}{2}$	38.178.305	17.38
20x $\frac{1}{2}$	38.178.306	29.62
25x $\frac{3}{4}$	38.178.307	32.47
32x1	38.178.308	38.50
40x1.1/4	38.178.309	63.66
50x1.1/2	38.178.310	90.56
63x2	38.178.311	122.13

### Union

Plain Socket x Brass  
BSP Male



Size	Code	Price
16x $\frac{3}{8}$	38.217.305	45.76
20x $\frac{1}{2}$	38.217.306	57.65
25x $\frac{3}{4}$	38.217.307	71.85
32x1	38.217.308	83.60
40x1.1/4	38.217.309	116.45
50x1.1/2	38.217.310	141.83
63x2	38.217.311	179.43

### Socket

Plain Socket x BSP  
Female Thread



Size	Code	Price
16x $\frac{3}{8}$	38.103.602	19.36
20x $\frac{1}{2}$	38.103.306	26.04
25x $\frac{3}{4}$	38.103.307	30.19
32x1	38.103.308	39.61
40x1.1/4	38.103.309	48.61
50x1.1/2	38.103.310	65.44
63x2	38.103.311	79.35

### Union

Plain Socket x Brass  
BSP Female



Size	Code	Price
16x $\frac{3}{8}$	38.216.305	47.50
20x $\frac{1}{2}$	38.216.306	60.43
25x $\frac{3}{4}$	38.216.307	75.50
32x1	38.216.308	91.45
50x1.1/2	38.216.310	159.19
63x2	38.216.311	179.42

### Nipple

Plain Socket/Spigot x  
BSP Male



Size	Code	Price
16x20x $\frac{3}{8}$	38.171.332	11.66
20x25x $\frac{1}{2}$	38.171.334	11.66
25x32x $\frac{3}{4}$	38.171.336	13.49
32x40x1	38.171.338	15.35
40x50x1.1/4	38.171.340	19.72
50x63x1.1/2	38.171.342	28.68
63x75x2	38.171.345	39.61



## Stub Flange

Serrated Face



## Durapipe

Size	Code	Price
20	38.135.306	7.18
25	38.135.307	8.10
32	38.135.308	10.72
40	38.135.309	16.25
50	38.135.310	24.31
63	38.135.311	47.50
75	38.135.312	77.29
90	38.135.313	88.91
110	38.135.314	124.77
160	38.135.317	174.30

## Backing Ring

Drilled to ANSI 150



Size	Code	Price
1/2"/20	860-005-12A	12.86
3/4"/25	860-007-12A	13.60
1"/32	860-010-12A	16.18
1.1/4"/40	860-012-12A	17.16
1.1/2"/50	860-015-12A	18.84
2"/63	860-020-11A	26.62
2.1/2"/75	860-025-11A	36.43
3"/90	860-030-11A	42.12
4"/110	860-040-11A	53.87
6"/160	860-060-13A	83.96

## Stub Flange

Serrated Face



## VDL

Size	Code	Price
63	7019606301	31.02
75	7019607501	49.98
90	7019609001	60.28
110	7019611001	85.78

## Backing Ring

Drilled to BS10 Table D



Size	Code	Price
1/2"/20	860-005-12E	11.37
3/4"/25	860-007-12E	12.85
1"/32	860-010-12E	13.50
1.1/4"/40	860-012-12E	13.92
1.1/2"/50	860-015-12E	17.05
2"/63	860-020-11E	24.21
2.1/2"/75	860-025-11E	36.17
3"/90	860-030-11E	36.77
4"/110	860-040-11D	47.52
4"/110	860-040-11E	47.52
6"/160	860-060-13E	83.96

# solvent cement

## One Step Solvent



Size	Code	Price
1/2 Litre	38.462.395	65.06

## Backing Ring

Drilled to BS4504  
PN10/PN16



Size	Code	Price
1/2"/20	860-005-12NP	12.86
3/4"/25	860-007-12NP	13.60
1"/32	860-010-12NP	16.61
1.1/4"/40	860-012-12NP	17.66
1.1/2"/50	860-015-12NP	18.84
2"/63	860-020-11NP	26.62
2.1/2"/75	860-025-11NP	36.43
3"/90	860-030-11NP	42.12
4"/110	860-040-11NP	53.87
6"/160	860-060-13NP	87.92

## Eco-cleaner

Size	Code	Price
500ml	03.457.395	30.02

## How much Solvent Cement?

Estimate the number of joints per size, then use this table to calculate how much solvent cement to order.

Allow approximately one half the cement quantity in C-65 cleaner.

Detailed jointing instructions are available on request.

Pipe Size	Joints per litre
16-32	300
40-63	120
75-90	50
110-160	15

## What size Brush?

It is important to use the correct size brush to apply solvent cement.

Pipe Size	Brush Size
10-32	8mm round
40-63	25 x 3mm flat
75-140	50 x 10mm flat
160	75 x 10mm flat



## Brushes

Size	Code	Price
4mm round	L151/4R	1.93
8mm round	L151/8R	2.71
25x10mm flat	565/1	2.98
50x10mm flat	565/2	6.83
75x10mm flat	565/3	17.96

## Stub Gasket

EPDM



Size	Code	Price
1/2"/20	861-E-005	0.77
3/4"/25	861-E-007	0.88
1"/32	861-E-010	0.97
1.1/4"/40	861-E-012	1.20
1.1/2"/50	861-E-015	1.46
2"/63	861-E-020	2.50
2.1/2"/75	861-E-025	3.07
3"/90	861-E-030	3.30
4"/110	861-E-040	4.80
6"/160	861-E-061	7.07

Please note codes above are for Table D/E. Replace the 'E' for 'I' for NP10/16 or 'A' for ANSI 150

## Stub Gasket

FPM



Size	Code	Price
1/2"/20	862-E-005	3.55
3/4"/25	862-E-007	5.27
1"/32	862-E-010	6.97
1.1/4"/40	862-E-012	11.20
1.1/2"/50	862-E-015	12.22
2"/63	862-E-020	16.10
2.1/2"/75	862-E-025	23.32
3"/90	862-E-030	30.38
4"/110	862-E-040	51.86
6"/160	862-E-061	86.56

Please note codes above are for Table D/E. Replace the 'E' for 'I' for NP10/16 or 'A' for ANSI 150

## Durapipe VKD Double Union Ball Valve

**Description:** In-line double union ball valve with lockable handle

**Mounting:** In any position

**Maximum Fluid Pressure at 20°C:** 16 bar

**Fluid Temperature Range:** 5°C - 95°C

**Construction:**

**Body:** Corzan® PVC-C

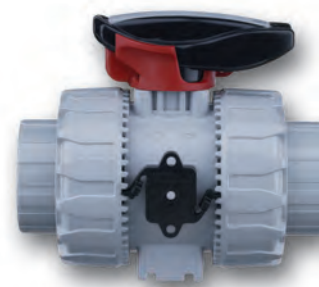
**Seals:** FPM

**Seats:** PTFE

**End Connections:** Solvent Sockets

**Features:** Safe blocked unions, multi-functional handle, easy actuator mounting platform and bracketing points included

**Options:** Electric or pneumatic actuation



MM Solvent Cement Sockets

FPM Seals  
PTFE Seats

Size	Code	Price
16	HODKK305	176.77
20	HODKK306	177.57
25	HODKK307	233.73
32	HODKK308	275.54
40	HODKK309	280.71
50	HODKK310	385.28
63	HODKK311	525.59
75	HODKK312	1439.85
90	HODKK313	1770.51
110	HODKK314	2149.42

## Praher Type S4 Ball Valve

**Description:** In-line double union ball valve with lockable handle

**Mounting:** In any position

**Maximum Fluid Pressure at 20°C:** Sizes 20mm-63mm 16 bar

**Fluid Temperature Range:** 5°C - 95°C

**Construction:**

**Body:** PVC-C

**Seals:** EPDM or FPM

**Seats:** PTFE

**End Connections:** Solvent Sockets

**Features:** Lockable handle and tagging point included



MM Solvent Cement Sockets

EPDM Seals  
PTFE Seats

Size	Code	Price
20	12.8448	79.97
25	12.8468	99.22
32	12.8472	117.21
40	12.8476	158.02
50	12.8480	178.68
63	12.8484	227.11

MM Solvent Cement Sockets

FPM Seals  
PTFE Seats

Size	Code	Price
20	12.8449	85.20
25	12.8469	128.95
32	12.8473	152.01
40	12.8477	202.06
50	12.8481	238.64
63	12.8485	285.66

## Durapipe TKD 3-Way T-Port Ball Valve

**Description:** In-line horizontal T-port 3-way ball valve with lockable handle

**Mounting:** In any position

**Maximum Fluid Pressure at 20°C:** 16 bar

**Fluid Temperature Range:** 5°C - 95°C

**Construction:**

**Body:** Corzan® PVC-C

**Seals:** FPM

**Seats:** PTFE

**End Connections:** Solvent Sockets

**Features:** Safe blocked unions, multi-functional handle and easy actuator mounting platform

**Options:** L-Port; electric or pneumatic actuation



### MM Solvent Cement Sockets

	Size	Code	Price
FPM Seals	20	HODKK306	177.57
PTFE Seats	25	HODKK307	233.73
	32	HODKK308	275.54
	40	HOTTK309	640.60
	50	HOTTK310	752.02
	63	HODKK311	525.59

## Durapipe DV Dialock Diaphragm Valve

**Description:** In-line diaphragm valve with position indicator

**Mounting:** In any position

**Maximum Fluid Pressure at 20°C:** 10 bar

**Fluid Temperature Range:** 5°C - 95°C

**Construction:**

**Body:** Corzan® PVC-C

**Diaphragm:** FPM

**End Connections:** Solvent Sockets up to 63mm - Solvent Spigots 75, 90 & 110mm

**Options:** EPDM or PTFE diaphragm; pneumatic actuation



### MM Solvent Cement Unions

	Size	Code	Price
FPM Diaphragm	20	HODVK306	623.68
	25	HODVK307	678.24
	32	HODVK308	727.37
	40	HODVK309	976.49
	50	HODVK310	1111.35
	63	HODVK311	1303.91

### MM Solvent Cement Spigots

	Size	Code	Price
FPM Diaphragm	75	HOVMK412	1773.25
	90	HOVMK413	1998.43
	110	HOVMK414	2712.71



### Actuated Valves

Durapipe PVC-C ball valves, butterfly valves and diaphragm valves are also available actuated. Please enquire for prices and information.

## Durapipe RV Y-Type Strainer

**Description:** In-line sediment strainer

**Mounting:** In any position

**Maximum Fluid Pressure at 20°C:** 16 bar

**Fluid Temperature Range:** 5°C - 95°C

**Construction:**

**Body:** Corzan® PVC-C

**Seals:** EPDM or FPM

**Strainer:** Polypropylene 0.6mm mesh (optional Stainless Steel)

**End Connections:** Solvent Sockets



MM Solvent Cement Sockets

FPM Seals

Size	Code	Price
20	HOUVK306	296.45
25	HOUVK307	340.18
32	HOUVK308	415.55
40	HOUVK309	546.77
50	HOUVK310	787.33
63	HOUVK311	869.92

## Durapipe SX Easyfit Ball Check Valve

**Description:** In-line ball check valve

**Mounting:** Vertical

**Maximum Fluid Pressure at 20°C:** 16 bar

**Fluid Temperature Range:** 5°C - 95°C

**Construction:**

**Body:** Corzan® PVC-C

**Seals:** EPDM

**End Connections:** Solvent Sockets

**Options:** EPDM seals



MM Solvent Cement Sockets

EPDM Seals

Size	Code	Price
20	HOSXJ306	177.56
25	HOSXJ307	197.15
32	HOSXJ308	256.72
40	HOSXJ309	375.80
50	HOSXJ310	392.14
63	HOSXJ311	473.35

MM Solvent Cement Sockets

FPM Seals

Size	Code	Price
20	HOSXK306	on application
25	HOSXK307	
32	HOSXK308	
40	HOSXK309	
50	HOSXK310	
63	HOSXK311	

## Let IPS come to you

If you would like to book a visit from the IPS Demo Van, please call:

**0800 975 79 71**

Or from outside of the UK:  
+44 191 521 3111

