

tubing & fittings

Increasing demands for purity and reliability make the correct selection of materials essential.

Used in a wide range of applications and industries such as electronics, chemical processing and semiconductor production, our tubing and fittings are optimized for maximum performance.

Serto fittings are simple and economical to install. Simply cut the tubing square and insert into the fitting - no need to disassemble, then turn the union nut $1\frac{3}{4}$ times to provide a leak tight joint.

Saint Gobain Performance Plastics have an unrivalled reputation for providing solutions for demanding applications. Available in PVDF, PTFE and PFA together with the industry leading TYGON range, the tubing is manufactured in a wide range of bores and wall thicknesses.

section guide

PVDF	440
PA (Nylon)	445
Brass	448
Stainless Steel	454
PFA	458
Tubes & Hoses	460
Valves	463
Flexible Hose & Fittings	464

IPS Flow Systems

Seaham Grange Industrial Estate, Seaham, Co Durham, SR7 0PT, England

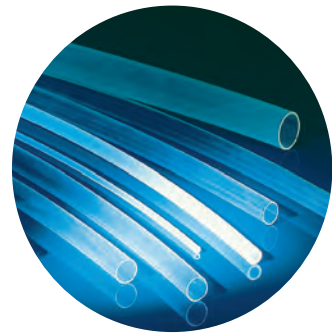
Tel: +44+ 191 521 3111 Fax: +44+ 191 521 3222

E-mail: sales@ipsflowsystems.com Website: www.ipsflowsystems.com

PVDF Tubing

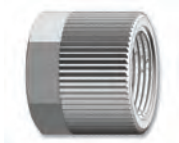
ID	OD	Wall	Code	Price (m)
4.00*	6.00	1.00	PVDF4X6-25	3.56
4.00**	6.00	1.00	PVDF4X6-50	3.56
6.00*	8.00	1.00	PVDF6X8-25	4.75
6.00**	8.00	1.00	PVDF6X8-50	4.75
8.00*	10.00	1.00	PVDF8X10-25	4.90
8.00**	10.00	1.00	PVDF8X10-50	4.90
10.00*	12.00	1.00	PVDF10X12-25	8.50
10.00**	12.00	1.00	PVDF10X12-50	8.50

* 25 mtr coil ** 50 mtr coil



Knurled Nut

SO 20020 - PN10



Size	Code	Price
6	SO20020-6	1.28
8	SO20020-8	2.32
10	SO20020-10	3.49
12	SO20020-12	4.70
16	SO20020-16	9.27

Male Adaptor Union

SO 21121 - PN10

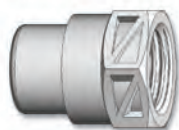


Size	Code	Price
* 4x1/8	SO21121-4-1/8	9.24
* 4x1/4	SO21121-4-1/4	10.66
* 4x3/8	SO21121-4-3/8	12.65
* 4x1/2	SO21121-4-1/2	17.26
6x1/8	SO21121-6-1/8	4.86
6x1/4	SO21121-6-1/4	7.95
6x3/8	SO21121-6-3/8	9.93
6x1/2	SO21121-6-1/2	15.04
8x1/8	SO21121-8-1/8	9.39
8x1/4	SO21121-8-1/4	9.76
8x3/8	SO21121-8-3/8	11.67
8x1/2	SO21121-8-1/2	16.46
10x1/4	SO21121-10-1/4	12.55
10x3/8	SO21121-10-3/8	13.99
10x1/2	SO21121-10-1/2	19.16
▼ 10/7x1/4	SO21121-10/7-1/4	15.64
▼ 10/7x3/8	SO21121-10/7-3/8	18.43
▼ 10/7x1/2	SO21121-10/7-1/2	23.36
12x1/4	SO21121-12-1/4	20.50
12x3/8	SO21121-12-3/8	21.55
12x1/2	SO21121-12-1/2	21.93
▼ 12/9x1/4	SO21121-12/9-1/4	20.65
▼ 12/9x3/8	SO21121-12/9-3/8	21.72
▼ 12/9x1/2	SO21121-12/9-1/2	22.11
▼ 16/13x3/8	SO21121-16/13-3/8	29.20
▼ 16/13x1/2	SO21121-16/13-1/2	32.60
▼ 16/13x3/4	SO21121-16/13-3/4	33.48

* With reduction compression ferrule
▼ For tubes with wall thickness of 1.5mm

Female Adaptor

SO 20030 - PN10



Size	Code	Price
6x1/8	SO20030-6-1/8	8.28
6x1/4	SO20030-6-1/4	9.06
8x1/4	SO20030-8-1/4	9.45
10x1/4	SO20030-10-1/4	11.00
10x3/8	SO20030-10-3/8	12.40
12x3/8	SO20030-12-3/8	12.73
12x1/2	SO20030-12-1/2	14.27
16x3/8	SO20030-16-3/8	21.87
16x1/2	SO20030-16-1/2	25.62
16x3/4	SO20030-16-3/4	33.31

Hose Nozzle

SO 20503 - PN10



Size	Code	Price
6x4	SO20503-A6-4	5.43
6x6	SO20503-A6-6	6.30
8x6	SO20503-A8-6	6.15
8x8	SO20503-A8-8	7.29
10x8	SO20503-A10-8	6.24
12x10	SO20503-A12-10	8.46
12x12	SO20503-A12-12	10.02

Male Adaptor Union

SO 21121 NPT - PN10



Size	Code	Price
* 4x1/8	SO21121-4-1/8NPT	10.36
* 4x1/4	SO21121-4-1/4NPT	10.73
6x1/8	SO21121-6-1/8NPT	5.02
6x1/4	SO21121-6-1/4NPT	8.02
8x1/8	SO21121-8-1/8NPT	9.45
8x1/4	SO21121-8-1/4NPT	10.01
10x1/4	SO21121-10-1/4NPT	12.72
10x3/8	SO21121-10-3/8NPT	14.86
▼ 10/7x1/4	SO21121-10/7-1/4NPT	17.96
▼ 10/7x3/8	SO21121-10/7-3/8NPT	21.79
▼ 12/9x3/8	SO21121-12/9-3/8NPT	26.00

* With reduction compression ferrule
▼ For tubes with wall thickness of 1.5mm

Straight Union

SO 21021 - PN10



Size	Code	Price
* 4	SO21021-4	13.83
6	SO21021-6	8.20
8	SO21021-8	14.30
10	SO21021-10	18.91
▼ 10/7	SO21021-10/7	27.89
12	SO21021-12	28.30
▼ 12/9	SO21021-12/9	28.54
▼ 16/13	SO21021-16/13	46.67

* With reduction compression ferrule
▼ For tubes with wall thickness of 1.5mm

Male Adaptor Union

SO 21124 - With edge seal - PN10



	Size	Code	Price
*	4x $\frac{1}{8}$	SO21124-4- $\frac{1}{8}$	10.32
*	4x $\frac{1}{4}$	SO21124-4- $\frac{1}{4}$	11.57
*	4x $\frac{3}{8}$	SO21124-4- $\frac{3}{8}$	16.49
*	4x $\frac{1}{2}$	SO21124-4- $\frac{1}{2}$	17.45
	6x $\frac{1}{8}$	SO21124-6- $\frac{1}{8}$	8.84
	6x $\frac{1}{4}$	SO21124-6- $\frac{1}{4}$	10.32
	6x $\frac{3}{8}$	SO21124-6- $\frac{3}{8}$	14.69
	6x $\frac{1}{2}$	SO21124-6- $\frac{1}{2}$	16.49
	8x $\frac{1}{8}$	SO21124-8- $\frac{1}{8}$	14.56
	8x $\frac{1}{4}$	SO21124-8- $\frac{1}{4}$	15.79
	8x $\frac{3}{8}$	SO21124-8- $\frac{3}{8}$	18.71
	8x $\frac{1}{2}$	SO21124-8- $\frac{1}{2}$	20.83
	10x $\frac{1}{4}$	SO21124-10- $\frac{1}{4}$	17.24
	10x $\frac{3}{8}$	SO21124-10- $\frac{3}{8}$	19.78
	10x $\frac{1}{2}$	SO21124-10- $\frac{1}{2}$	22.76
	12x $\frac{1}{4}$	SO21124-12- $\frac{1}{4}$	23.96
	12x $\frac{3}{8}$	SO21124-12- $\frac{3}{8}$	27.42
	12x $\frac{1}{2}$	SO21124-12- $\frac{1}{2}$	28.90

* With reduction compression ferrule

Male Adaptor Union

SO 21124 OR - O-Ring FPM - PN10



	Size	Code	Price
*	4x $\frac{1}{8}$	SO21124-4- $\frac{1}{8}$ OR	13.51
*	4x $\frac{1}{4}$	SO21124-4- $\frac{1}{4}$ OR	15.71
*	4x $\frac{3}{8}$	SO21124-4- $\frac{3}{8}$ OR	20.23
*	4x $\frac{1}{2}$	SO21124-4- $\frac{1}{2}$ OR	23.36
	6x $\frac{1}{8}$	SO21124-6- $\frac{1}{8}$ OR	11.16
	6x $\frac{1}{4}$	SO21124-6- $\frac{1}{4}$ OR	12.79
	6x $\frac{3}{8}$	SO21124-6- $\frac{3}{8}$ OR	15.66
	6x $\frac{1}{2}$	SO21124-6- $\frac{1}{2}$ OR	20.37
	8x $\frac{1}{8}$	SO21124-8- $\frac{1}{8}$ OR	17.24
	8x $\frac{1}{4}$	SO21124-8- $\frac{1}{4}$ OR	17.85
	8x $\frac{3}{8}$	SO21124-8- $\frac{3}{8}$ OR	21.43
	8x $\frac{1}{2}$	SO21124-8- $\frac{1}{2}$ OR	24.88
	10x $\frac{1}{4}$	SO21124-10- $\frac{1}{4}$ OR	19.17
	10x $\frac{3}{8}$	SO21124-10- $\frac{3}{8}$ OR	22.85
	10x $\frac{1}{2}$	SO21124-10- $\frac{1}{2}$ OR	26.65
	12x $\frac{1}{4}$	SO21124-12- $\frac{1}{4}$ OR	23.65
	12x $\frac{3}{8}$	SO21124-12- $\frac{3}{8}$ OR	30.12
	12x $\frac{1}{2}$	SO21124-12- $\frac{1}{2}$ OR	32.96
▼	12/9x $\frac{1}{4}$	SO21124-12/9- $\frac{1}{4}$ OR	26.08
▼	12/9x $\frac{3}{8}$	SO21124-12/9- $\frac{3}{8}$ OR	30.12
▼	12/9x $\frac{1}{2}$	SO21124-12/9- $\frac{1}{2}$ OR	29.90

* With reduction compression ferrule

▼ For tubes with wall thickness of 1.5mm

Female Adaptor Union

SO 21221 - PN10



	Size	Code	Price
*	4x $\frac{1}{8}$	SO21221-4- $\frac{1}{8}$	12.24
*	4x $\frac{1}{4}$	SO21221-4- $\frac{1}{4}$	12.80
*	4x $\frac{3}{8}$	SO21221-4- $\frac{3}{8}$	13.20
*	4x $\frac{1}{2}$	SO21221-4- $\frac{1}{2}$	21.38
	6x $\frac{1}{8}$	SO21221-6- $\frac{1}{8}$	10.26
	6x $\frac{1}{4}$	SO21221-6- $\frac{1}{4}$	10.87
	6x $\frac{3}{8}$	SO21221-6- $\frac{3}{8}$	11.29
	6x $\frac{1}{2}$	SO21221-6- $\frac{1}{2}$	19.47
	8x $\frac{1}{4}$	SO21221-8- $\frac{1}{4}$	12.88
	8x $\frac{3}{8}$	SO21221-8- $\frac{3}{8}$	14.15
	8x $\frac{1}{2}$	SO21221-8- $\frac{1}{2}$	20.83
	10x $\frac{1}{4}$	SO21221-10- $\frac{1}{4}$	13.83
	10x $\frac{3}{8}$	SO21221-10- $\frac{3}{8}$	16.28
	10x $\frac{1}{2}$	SO21221-10- $\frac{1}{2}$	24.57
▼	10/7x $\frac{1}{4}$	SO21221-10/7- $\frac{1}{4}$	20.43
▼	10/7x $\frac{3}{8}$	SO21221-10/7- $\frac{3}{8}$	22.25
▼	10/7x $\frac{1}{2}$	SO21221-10/7- $\frac{1}{2}$	29.52
	12x $\frac{3}{8}$	SO21221-12- $\frac{3}{8}$	24.08
	12x $\frac{1}{2}$	SO21221-12- $\frac{1}{2}$	30.76
▼	12/9x $\frac{3}{8}$	SO21221-12/9- $\frac{3}{8}$	22.00
▼	12/9x $\frac{1}{2}$	SO21221-12/9- $\frac{1}{2}$	36.02
▼	16/13x $\frac{3}{8}$	SO21221-16/13- $\frac{3}{8}$	35.75
▼	16/13x $\frac{1}{2}$	SO21221-16/13- $\frac{1}{2}$	37.29

* With reduction compression ferrule

▼ For tubes with wall thickness of 1.5mm

Tube Stub

SO 21300 - PN10



	Size	Code	Price
	6x6	SO21300-6-A6	3.08
	8x8	SO21300-8-A8	2.61
	10x10	SO21300-10-A10	3.87
	12x12	SO21300-12-A12	3.98
▼	12/9x12/9	SO21300-12/9-A12	3.91
▼	16/13x16/13	SO21300-16/13-A16/13	4.91

▼ For tubes with wall thickness of 1.5mm

Panel Mount Union

SO 21521 - PN10



	Size	Code	Price
*	4	SO21521-4	22.81
	6	SO21521-6	17.33
	8	SO21521-8	21.61
	10	SO21521-10	25.99
▼	10/7	SO21521-10/7	33.07
▼	12	SO21521-12	37.12
▼	12/9	SO21521-12/9	41.65
▼	16/13	SO21521-16/13	37.78

* With reduction compression ferrule

▼ For tubes with wall thickness of 1.5mm

Adjustable Male Adaptor

SO 21600 - PN10



Size	Code	Price
6x $\frac{1}{8}$	SO21600-A6- $\frac{1}{8}$	6.69
6x $\frac{1}{4}$	SO21600-A6- $\frac{1}{4}$	7.62
6x $\frac{3}{8}$	SO21600-A6- $\frac{3}{8}$	7.86
6x $\frac{1}{2}$	SO21600-A6- $\frac{1}{2}$	10.19
8x $\frac{1}{8}$	SO21600-A8- $\frac{1}{8}$	6.43
8x $\frac{1}{4}$	SO21600-A8- $\frac{1}{4}$	7.25
8x $\frac{3}{8}$	SO21600-A8- $\frac{3}{8}$	8.28
8x $\frac{1}{2}$	SO21600-A8- $\frac{1}{2}$	10.92
10x $\frac{1}{4}$	SO21600-A10- $\frac{1}{4}$	7.95
10x $\frac{3}{8}$	SO21600-A10- $\frac{3}{8}$	8.02
10x $\frac{1}{2}$	SO21600-A10- $\frac{1}{2}$	12.45
12x $\frac{1}{4}$	SO21600-A12- $\frac{1}{4}$	10.24
12x $\frac{3}{8}$	SO21600-A12- $\frac{3}{8}$	10.45
12x $\frac{1}{2}$	SO21600-A12- $\frac{1}{2}$	11.12
16x $\frac{3}{8}$	SO21600-A16- $\frac{3}{8}$	18.61
16x $\frac{1}{2}$	SO21600-A16- $\frac{1}{2}$	20.28
16x $\frac{3}{4}$	SO21600-A16- $\frac{3}{4}$	22.46

Adjustable Male Adaptor

SO 21624 - With edge seal - PN10



Size	Code	Price
6x $\frac{1}{8}$	SO21624-A6- $\frac{1}{8}$ Z	7.49
6x $\frac{1}{4}$	SO21624-A6- $\frac{1}{4}$ Z	8.83
6x $\frac{3}{8}$	SO21624-A6- $\frac{3}{8}$ Z	9.68
8x $\frac{1}{8}$	SO21624-A8- $\frac{1}{8}$ Z	11.39
8x $\frac{1}{4}$	SO21624-A8- $\frac{1}{4}$ Z	8.86
8x $\frac{3}{8}$	SO21624-A8- $\frac{3}{8}$ Z	10.26
10x $\frac{1}{4}$	SO21624-A10- $\frac{1}{4}$ Z	9.14
10x $\frac{3}{8}$	SO21624-A10- $\frac{3}{8}$ Z	10.50
10x $\frac{1}{2}$	SO21624-A10- $\frac{1}{2}$ Z	11.64
12x $\frac{1}{4}$	SO21624-A12- $\frac{1}{4}$ Z	9.29
12x $\frac{3}{8}$	SO21624-A12- $\frac{3}{8}$ Z	10.72
12x $\frac{1}{2}$	SO21624-A12- $\frac{1}{2}$ Z	13.71
16x $\frac{3}{8}$	SO21624-A16- $\frac{3}{8}$ Z	10.93
16x $\frac{1}{2}$	SO21624-A16- $\frac{1}{2}$ Z	13.93
16x $\frac{3}{4}$	SO21624-A16- $\frac{3}{4}$ Z	16.49

Adjustable Male Adaptor

SO 21624 OR - O-Ring FPM - PN10



Size	Code	Price
6x $\frac{1}{8}$	SO21624-A6- $\frac{1}{8}$ OR	8.52
6x $\frac{1}{4}$	SO21624-A6- $\frac{1}{4}$ OR	9.92
6x $\frac{3}{8}$	SO21624-A6- $\frac{3}{8}$ OR	10.87
6x $\frac{1}{2}$	SO21624-A6- $\frac{1}{2}$ OR	14.66
8x $\frac{1}{8}$	SO21624-A8- $\frac{1}{8}$ OR	10.26
8x $\frac{1}{4}$	SO21624-A8- $\frac{1}{4}$ OR	10.83
8x $\frac{3}{8}$	SO21624-A8- $\frac{3}{8}$ OR	12.33
10x $\frac{1}{4}$	SO21624-A10- $\frac{1}{4}$ OR	10.83
10x $\frac{3}{8}$	SO21624-A10- $\frac{3}{8}$ OR	12.50
10x $\frac{1}{2}$	SO21624-A10- $\frac{1}{2}$ OR	14.66
12x $\frac{1}{4}$	SO21624-A12- $\frac{1}{4}$ OR	12.10
12x $\frac{3}{8}$	SO21624-A12- $\frac{3}{8}$ OR	13.26
12x $\frac{1}{2}$	SO21624-A12- $\frac{1}{2}$ OR	17.18
16x $\frac{3}{8}$	SO21624-A16- $\frac{3}{8}$ OR	13.79
16x $\frac{1}{2}$	SO21624-A16- $\frac{1}{2}$ OR	15.77
16x $\frac{3}{4}$	SO21624-A16- $\frac{3}{4}$ OR	21.25

Reduced Union

SO 21821 - PN10



Size	Code	Price
* 8x4	SO21821-A8-4	11.57
8x6	SO21821-A8-6	9.06
10x6	SO21821-A10-6	8.86
10x8	SO21821-A10-8	11.12
12x6	SO21821-A12-6	12.55
12x8	SO21821-A12-8	15.35
12x10	SO21821-A12-10	14.57
▼ 12x10/7	SO21821-A12-10/7	20.29
16x12	SO21821-A16-12	29.06
* With reduction compression ferrule		
▼ For tubes with wall thickness of 1.5mm		

Elbow Union

SO 22021 - PN10



Size	Code	Price
* 4	SO22021-4	15.65
6	SO22021-6	10.11
8	SO22021-8	15.73
10	SO22021-10	18.44
▼ 10/7	SO22021-10/7	27.99
12	SO22021-12	29.11
▼ 12/9	SO22021-12/9	29.42
▼ 16/13	SO22021-16/13	48.58
* With reduction compression ferrule		
▼ For tubes with wall thickness of 1.5mm		

Elbow Union

SO 22221 - Female adaptor - PN10



Size	Code	Price
* 4x $\frac{1}{8}$	SO22221-4- $\frac{1}{8}$	21.20
* 4x $\frac{1}{4}$	SO22221-4- $\frac{1}{4}$	22.01
6x $\frac{1}{8}$	SO22221-6- $\frac{1}{8}$	16.54
6x $\frac{1}{4}$	SO22221-6- $\frac{1}{4}$	17.33
8x $\frac{1}{4}$	SO22221-8- $\frac{1}{4}$	21.93
10x $\frac{1}{4}$	SO22221-10- $\frac{1}{4}$	24.80
10x $\frac{3}{8}$	SO22221-10- $\frac{3}{8}$	26.22
▼ 10/7x $\frac{1}{4}$	SO22221-10/7- $\frac{1}{4}$	34.62
▼ 10/7x $\frac{3}{8}$	SO22221-10/7- $\frac{3}{8}$	35.75
12x $\frac{3}{8}$	SO22221-12- $\frac{3}{8}$	35.93
12x $\frac{1}{2}$	SO22221-12- $\frac{1}{2}$	38.89
▼ 12/9x $\frac{3}{8}$	SO22221-12/9- $\frac{3}{8}$	36.24
▼ 12/9x $\frac{1}{2}$	SO22221-12/9- $\frac{1}{2}$	39.18
▼ 16/13x $\frac{3}{8}$	SO22221-16/13- $\frac{3}{8}$	61.36
▼ 16/13x $\frac{1}{2}$	SO22221-16/13- $\frac{1}{2}$	63.08
▼ 16/13x $\frac{3}{4}$	SO22221-16/13- $\frac{3}{4}$	65.63
* With reduction compression ferrule		
▼ For tubes with wall thickness of 1.5mm		

Male Adaptor Elbow Union

SO 22421 - PN10



Size	Code	Price
* 4x $\frac{1}{8}$	SO22421-4- $\frac{1}{8}$	9.70
* 4x $\frac{1}{4}$	SO22421-4- $\frac{1}{4}$	12.40
6x $\frac{1}{8}$	SO22421-6- $\frac{1}{8}$	6.90
6x $\frac{1}{4}$	SO22421-6- $\frac{1}{4}$	9.55
8x $\frac{1}{8}$	SO22421-8- $\frac{1}{8}$	11.22
8x $\frac{1}{4}$	SO22421-8- $\frac{1}{4}$	12.10
10x $\frac{1}{4}$	SO22421-10- $\frac{1}{4}$	14.47
10x $\frac{3}{8}$	SO22421-10- $\frac{3}{8}$	14.70
▼ 10/7x $\frac{1}{4}$	SO22421-10/7- $\frac{1}{4}$	19.40
▼ 10x7x $\frac{3}{8}$	SO22421-10/7- $\frac{3}{8}$	19.79
12x $\frac{1}{4}$	SO22421-12- $\frac{1}{4}$	19.33
12x $\frac{3}{8}$	SO22421-12- $\frac{3}{8}$	19.70
12x $\frac{1}{2}$	SO22421-12- $\frac{1}{2}$	21.61
▼ 12/9x $\frac{1}{4}$	SO22421-12/9- $\frac{1}{4}$	19.70
▼ 12/9x $\frac{3}{8}$	SO22421-12/9- $\frac{3}{8}$	19.88
▼ 12/9x $\frac{1}{2}$	SO22421-12/9- $\frac{1}{2}$	21.78
▼ 16/13x $\frac{3}{8}$	SO22421-16/13- $\frac{3}{8}$	33.67
▼ 16/13x $\frac{1}{2}$	SO22421-16/13- $\frac{1}{2}$	38.31
* With reduction compression ferrule		
▼ For tubes with wall thickness of 1.5mm		

Male Adaptor Elbow Union

SO 22421 NPT - PN10



Size	Code	Price
* 4x1/8	SO22421-4-1/8NPT	9.94
* 4x1/4	SO22421-4-1/4NPT	12.72
6x1/8	SO22421-6-1/8NPT	7.14
6x1/4	SO22421-6-1/4NPT	9.93
8x1/8	SO22421-8-1/8NPT	11.43
8x1/4	SO22421-8-1/4NPT	12.10
10x1/4	SO22421-10-1/4NPT	14.01
10x3/8	SO22421-10-3/8NPT	14.70
▼ 10/7x1/4	SO22421-10/7-1/4NPT	20.59
▼ 10/7x3/8	SO22421-10/7-3/8NPT	21.23

* With reduction compression ferrule
▼ For tubes with wall thickness of 1.5mm

Adjustable Elbow Union

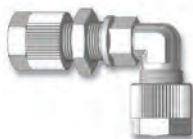
SO 22621 - PN10



Size	Code	Price
4x6	SO22621-4-A6	12.55
6x6	SO22621-6-A6	9.70
8x8	SO22621-8-A8	10.73
10x10	SO22621-10-A10	14.30
12x12	SO22621-12-A12	23.92

Panel Mount Elbow Union

SO 22721 - PN10



Size	Code	Price
* 4	SO22721-4	23.73
6	SO22721-6	17.90
8	SO22721-8	22.47
10	SO22721-10	27.05
▼ 10/7	SO22721-10/7	34.48
▼ 12	SO22721-12	38.48
▼ 12/9	SO22721-12/9	43.80
▼ 16/13	SO22721-16/13	65.89

* With reduction compression ferrule
▼ For tubes with wall thickness of 1.5mm

Tee Union

SO 23021 - PN10



Size	Code	Price
* 4	SO23021-4	24.08
6	SO23021-6	15.73
8	SO23021-8	20.65
10	SO23021-10	26.94
▼ 10/7	SO23021-10/7	37.07
▼ 12	SO23021-12	39.57
▼ 12x9	SO23021-12/9	40.06
▼ 16/13	SO23021-16/13	61.48

* With reduction compression ferrule
▼ For tubes with wall thickness of 1.5mm

Tee Union

SO 23221 - Female adaptor - PN10



Size	Code	Price
* 4x1/8	SO23221-4-1/8-4	27.75
* 4x1/4	SO23221-4-1/4-4	28.55
6x1/8	SO23221-6-1/8-6	22.18
6x1/4	SO23221-6-1/4-6	22.97
8x1/4	SO23221-8-1/4-8	26.87
10x1/4	SO23221-10-1/4-10	33.30
10x3/8	SO23221-10-3/8-10	34.74
▼ 10/7x1/4	SO23221-10/7-1/4-10/7	44.98
▼ 10/7x3/8	SO23221-10/7-3/8-10/7	46.43
12x3/8	SO23221-12-3/8-12	46.40
12x1/2	SO23221-12-1/2-12	44.77
▼ 12/9x3/8	SO23221-12/9-3/8-12/9	46.90
▼ 12/9x1/2	SO23221-12/9-1/2-12/9	49.84
▼ 16/13x3/8	SO23221-16/13-3/8-16/13	78.30
▼ 16/13x1/2	SO23221-16/13-1/2-16/13	82.94
▼ 16/13x3/4	SO23221-16/13-3/4-16/13	91.57

* With reduction compression ferrule
▼ For tubes with wall thickness of 1.5mm

Adjustable Tee Union

SO 23621 - PN10



Size	Code	Price
6x6	SO23621-6-A6-6	14.24
8x8	SO23621-8-A8-8	16.11
10x10	SO23621-10-A10-10	19.17
12x12	SO23621-12-A12-12	21.73

Male Adaptor Tee Union

SO 23721 - PN10

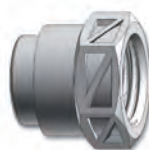


Size	Code	Price
* 4x1/8	SO23721-4-1/8-4	18.29
* 4x1/4	SO23721-4-1/4-4	22.03
6x1/8	SO23721-6-1/8-6	12.72
6x1/4	SO23721-6-1/4-6	16.46
8x1/8	SO23721-8-1/8-8	16.45
8x1/4	SO23721-8-1/4-8	16.46
10x1/4	SO23721-10-1/4-10	18.56
10x3/8	SO23721-10-3/8-10	20.91
▼ 10/7x1/4	SO23721-10/7-1/4-10/7	32.81
▼ 10/7x3/8	SO23721-10/7-3/8-10/7	33.70

* With reduction compression ferrule
▼ For tubes with wall thickness of 1.5mm

Female Reduction Socket

SO 20031 - PN10



Size	Code	Price
1/8x1/8	SO20031-1/8-1/8	8.13
1/8x1/4	SO20031-1/8-1/4	10.04
1/8x3/8	SO20031-1/8-3/8	15.35
1/8x1/2	SO20031-1/8-1/2	17.01
1/4x1/4	SO20031-1/4-1/4	10.68
1/4x3/8	SO20031-1/4-3/8	13.67
1/4x1/2	SO20031-1/4-1/2	16.43
3/8x3/8	SO20031-3/8-3/8	13.82
3/8x1/2	SO20031-3/8-1/2	13.52

Male Reduction Nipple

SO 20041 - PN10



Size	Code	Price
1/8x1/8	SO20041-1/8-1/8	8.11
1/8x1/4	SO20041-1/8-1/4	8.50
1/8x3/8	SO20041-1/8-3/8	9.30
1/8x1/2	SO20041-1/8-1/2	10.39
1/4x1/8	SO20041-1/4-1/8	8.99
1/4x1/4	SO20041-1/4-1/4	10.57
1/4x3/8	SO20041-1/4-3/8	9.29
1/4x1/2	SO20041-1/4-1/2	12.73
3/8x1/4	SO20041-3/8-1/4	13.12
3/8x3/8	SO20041-3/8-3/8	13.42
3/8x1/2	SO20041-3/8-1/2	13.45

Taper Seat Non Return Valve

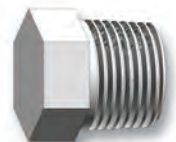
SO CV23A21 - PN10 - FPM



Size	Code	Price
4	SOCV23A21-4-4	76.76
6	SOCV23A21-6-6	76.85
8	SOCV23A21-8-8	81.37
10	SOCV23A21-10-10	107.50
12	SOCV23A21-12-12	117.12

Male Hexagon Plug

SO 20371 - PN10



Size	Code	Price
1/8	SO20371-1/8	5.76
1/4	SO20371-1/4	6.75
3/8	SO20371-3/8	7.66
1/2	SO20371-1/2	11.26

Regulating Valve

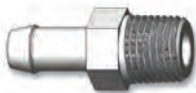
SO NV21A21 - PN10 - PTFE



Size	Code	Price
4	SONV21A21-4-4	168.85
6	SONV22A21-6-6	107.11
8	SONV22A21-8-8	125.96
10	SONV22A21-10-10	148.89
12	SONV22A21-12-12	171.85

Male Adaptor Hose Nozzle

SO 20511 - PN10



Size	Code	Price
4x1/8	SO20511-4-1/8	6.30
6x1/8	SO20511-6-1/8	7.28
6x1/4	SO20511-6-1/4	8.25
8x1/4	SO20511-8-1/4	8.40
10x3/8	SO20511-10-3/8	9.38
12x3/8	SO20511-12-3/8	10.19
12x1/2	SO20511-12-1/2	11.84

Male Adaptor Tapered-Tapered

SO 21109 - PN10



Size	Code	Price
1/8x1/8	SO21109-1/8K-1/8K	7.28
1/8x1/4	SO21109-1/8K-1/4K	10.26
1/4x1/4	SO21109-1/4K-1/4K	11.70
1/4x3/8	SO21109-1/4K-3/8K	14.91
1/4x1/2	SO21109-1/4K-1/2K	18.96
3/8x3/8	SO21109-3/8K-3/8K	16.42
3/8x1/2	SO21109-3/8K-1/2K	18.96
1/2x1/2	SO21109-1/2K-1/2K	23.36
1/2x3/4	SO21109-1/2K-3/4K	28.33



Need advice on the Serto range?

Call Kevin Nixon or Chris Mckeown on:

0800 975 79 71



Compression Ferrule

SO 30001 - PN10



Size	Code	Price
6	SO30001-6	0.23
8	SO30001-8	0.23
10	SO30001-10	0.30
12	SO30001-12	0.30

Plug

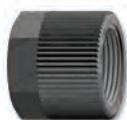
SO 30002 - PN10



Size	Code	Price
6	SO30002-6	1.39
8	SO30002-8	1.75
10	SO30002-10	2.15
12	SO30002-12	3.55

Knurled Nut

SO 30020 - PN10



Size	Code	Price
6	SO30020-6	0.39
8	SO30020-8	0.54
10	SO30020-10	0.85
12	SO30020-12	1.08

Straight Union

SO 31021 - PN10



Size	Code	Price
6	SO31021-6	2.00
8	SO31021-8	3.29
10	SO31021-10	4.52
▼ 10/7	SO31021-10/7	9.83
12	SO31021-12	6.53
▼ 12x9	SO31021-12/9	6.53

▼ For tubes with wall thickness of 1.5mm

Male Adaptor Union

SO 31121 - PN10



Size	Code	Price
6x $\frac{1}{8}$	SO31121-6- $\frac{1}{8}$	2.63
6x $\frac{1}{4}$	SO31121-6- $\frac{1}{4}$	2.00
6x $\frac{3}{8}$	SO31121-6- $\frac{3}{8}$	2.41
8x $\frac{1}{8}$	SO31121-8- $\frac{1}{8}$	2.13
8x $\frac{1}{4}$	SO31121-8- $\frac{1}{4}$	2.30
8x $\frac{3}{8}$	SO31121-8- $\frac{3}{8}$	2.58
10x $\frac{1}{4}$	SO31121-10- $\frac{1}{4}$	2.99
10x $\frac{3}{8}$	SO31121-10- $\frac{3}{8}$	3.38
▼ 10/7x $\frac{1}{4}$	SO31121-10/7- $\frac{1}{4}$	5.61
▼ 10/7x $\frac{3}{8}$	SO31121-10/7- $\frac{3}{8}$	6.02
12x $\frac{1}{4}$	SO31121-12- $\frac{1}{4}$	5.46
12x $\frac{3}{8}$	SO31121-12- $\frac{3}{8}$	5.93
12x $\frac{1}{2}$	SO31121-12- $\frac{1}{2}$	6.15
▼ 12/9x $\frac{1}{4}$	SO31121-12/9- $\frac{1}{4}$	5.46
▼ 12/9x $\frac{3}{8}$	SO31121-12/9- $\frac{3}{8}$	5.66
▼ 12/9x $\frac{1}{2}$	SO31121-12/9- $\frac{1}{2}$	6.15

▼ For tubes with wall thickness of 1.5mm

Male Adaptor Union

SO 31121 NPT - PN10



Size	Code	Price
6x $\frac{1}{8}$	SO31121-6- $\frac{1}{8}$ NPT	1.54
6x $\frac{1}{4}$	SO31121-6- $\frac{1}{4}$ NPT	2.00
8x $\frac{1}{8}$	SO31121-8- $\frac{1}{8}$ NPT	3.70
8x $\frac{1}{4}$	SO31121-8- $\frac{1}{4}$ NPT	2.38
10x $\frac{1}{4}$	SO31121-10- $\frac{1}{4}$ NPT	3.06
10x $\frac{3}{8}$	SO31121-10- $\frac{3}{8}$ NPT	3.38
▼ 10/7x $\frac{1}{4}$	SO31121-10/7- $\frac{1}{4}$ NPT	5.91
▼ 10/7x $\frac{3}{8}$	SO31121-10/7- $\frac{3}{8}$ NPT	6.28

▼ For tubes with wall thickness of 1.5mm

Male Adaptor Union

SO 31124 OR - O-Ring
NBR - PN10


Size	Code	Price
6x $\frac{1}{8}$	SO31124-6- $\frac{1}{8}$ OR	4.43
6x $\frac{1}{4}$	SO31124-6- $\frac{1}{4}$ OR	6.00
6x $\frac{3}{8}$	SO31124-6- $\frac{3}{8}$ OR	6.42
8x $\frac{1}{8}$	SO31124-8- $\frac{1}{8}$ OR	4.73
8x $\frac{1}{4}$	SO31124-8- $\frac{1}{4}$ OR	6.28
8x $\frac{3}{8}$	SO31124-8- $\frac{3}{8}$ OR	6.79
10x $\frac{1}{4}$	SO31124-10- $\frac{1}{4}$ OR	6.64
10x $\frac{3}{8}$	SO31124-10- $\frac{3}{8}$ OR	6.71
10x $\frac{1}{2}$	SO31124-10- $\frac{1}{2}$ OR	8.18
12x $\frac{1}{4}$	SO31124-12- $\frac{1}{4}$ OR	8.27
12x $\frac{3}{8}$	SO31124-12- $\frac{3}{8}$ OR	9.00
12x $\frac{1}{2}$	SO31124-12- $\frac{1}{2}$ OR	9.97

Female Adaptor Union

SO 31221 - PN10



Size	Code	Price
6x $\frac{1}{8}$	SO31221-6- $\frac{1}{8}$	4.52
6x $\frac{1}{4}$	SO31221-6- $\frac{1}{4}$	4.83
6x $\frac{3}{8}$	SO31221-6- $\frac{3}{8}$	4.92
6x $\frac{1}{2}$	SO31221-6- $\frac{1}{2}$	7.17
8x $\frac{1}{8}$	SO31221-8- $\frac{1}{8}$	4.94
8x $\frac{1}{4}$	SO31221-8- $\frac{1}{4}$	5.08
8x $\frac{3}{8}$	SO31221-8- $\frac{3}{8}$	5.36
8x $\frac{1}{2}$	SO31221-8- $\frac{1}{2}$	7.75
10x $\frac{1}{4}$	SO31221-10- $\frac{1}{4}$	5.56
10x $\frac{3}{8}$	SO31221-10- $\frac{3}{8}$	5.67
10x $\frac{1}{2}$	SO31221-10- $\frac{1}{2}$	8.13
▼ 10/7x $\frac{1}{4}$	SO31221-10/7- $\frac{1}{4}$	8.22
▼ 10/7x $\frac{3}{8}$	SO31221-10/7- $\frac{3}{8}$	8.59
▼ 12/9x $\frac{3}{8}$	SO31221-12/9- $\frac{3}{8}$	7.07
▼ 12/9x $\frac{1}{2}$	SO31221-12/9- $\frac{1}{2}$	8.94

▼ For tubes with wall thickness of 1.5mm

Tube Stub

SO 31300 - PN10



Size	Code	Price
6x6	SO31300-6-A6	1.48
8x8	SO31300-8-A8	1.69
10x10	SO31300-10-A10	1.91
12x12	SO31300-12-A12	1.85
12/9x12/9	SO31300-12/9-A12	1.92

▼ For tubes with wall thickness of 1.5mm

Reduction Port Connector

SO 31300 RED - PN10



Size	Code	Price
8x6	SO31300-8-A6RED	1.85
10x6	SO31300-10-A6RED	1.92
10x8	SO31300-10-A8RED	2.00
12x8	SO31300-12-A8RED	2.06
12x10	SO31300-12-A10RED	2.13

Panel Mount Union

SO 31521 - PN10



Size	Code	Price
6	SO31521-6	3.23
8	SO31521-8	3.91
10	SO31521-10	5.33
10x7	SO31521-10/7	8.38
12	SO31521-12	10.03
12/9	SO31521-12/9	11.31

▼ For tubes with wall thickness of 1.5mm

Adjustable Male Adaptor

SO 31600 - PN10



Size	Code	Price
6x $\frac{1}{8}$	SO31600-A6- $\frac{1}{8}$	2.97
6x $\frac{1}{4}$	SO31600-A6- $\frac{1}{4}$	3.45
6x $\frac{3}{8}$	SO31600-A6- $\frac{3}{8}$	3.77
8x $\frac{1}{8}$	SO31600-A8- $\frac{1}{8}$	3.59
8x $\frac{1}{4}$	SO31600-A8- $\frac{1}{4}$	3.77
8x $\frac{3}{8}$	SO31600-A8- $\frac{3}{8}$	4.28
10x $\frac{1}{4}$	SO31600-A10- $\frac{1}{4}$	3.84
10x $\frac{3}{8}$	SO31600-A10- $\frac{3}{8}$	4.65
10x $\frac{1}{2}$	SO31600-A10- $\frac{1}{2}$	5.09
12x $\frac{1}{4}$	SO31600-A12- $\frac{1}{4}$	4.22
12x $\frac{3}{8}$	SO31600-A12- $\frac{3}{8}$	4.80
12x $\frac{1}{2}$	SO31600-A12- $\frac{1}{2}$	6.00

Adjustable Male Adaptor

SO 31624 OR - O-Ring
NBR - PN10



Size	Code	Price
6x $\frac{1}{8}$	SO31624-A6- $\frac{1}{8}$ OR	5.60
6x $\frac{1}{4}$	SO31624-A6- $\frac{1}{4}$ OR	6.00
6x $\frac{3}{8}$	SO31624-A6- $\frac{3}{8}$ OR	6.87
8x $\frac{1}{8}$	SO31624-A8- $\frac{1}{8}$ OR	7.31
8x $\frac{1}{4}$	SO31624-A8- $\frac{1}{4}$ OR	6.28
8x $\frac{3}{8}$	SO31624-A8- $\frac{3}{8}$ OR	7.31
10x $\frac{1}{4}$	SO31624-A10- $\frac{1}{4}$ OR	7.31
10x $\frac{3}{8}$	SO31624-A10- $\frac{3}{8}$ OR	7.45
10x $\frac{1}{2}$	SO31624-A10- $\frac{1}{2}$ OR	8.56
12x $\frac{1}{4}$	SO31624-A12- $\frac{1}{4}$ OR	8.56
12x $\frac{3}{8}$	SO31624-A12- $\frac{3}{8}$ OR	8.71
12x $\frac{1}{2}$	SO31624-A12- $\frac{1}{2}$ OR	9.51

Reduced Union

SO 31821 - PN10



Size	Code	Price
8x6	SO31821-A8-6	2.23
10x6	SO31821-A10-6	2.38
10x8	SO31821-A10-8	2.70
12x6	SO31821-A12-6	4.77
12x8	SO31821-A12-8	3.46
12x10	SO31821-A12-10	3.84
12x10/7	SO31821-A12-10/7	5.15

▼ For tubes with wall thickness of 1.5mm

Elbow Union

SO 32021 - PN10



Size	Code	Price
6	SO32021-6	3.06
8	SO32021-8	3.63
10	SO32021-10	4.69
10/7	SO32021-10/7	10.05
12	SO32021-12	9.06
12/9	SO32021-12/9	9.06

▼ For tubes with wall thickness of 1.5mm

Male Adaptor Elbow Union

SO 32421 - PN10



Size	Code	Price
6x $\frac{1}{8}$	SO32421-6- $\frac{1}{8}$	1.46
6x $\frac{1}{4}$	SO32421-6- $\frac{1}{4}$	2.30
8x $\frac{1}{8}$	SO32421-8- $\frac{1}{8}$	2.60
8x $\frac{1}{4}$	SO32421-8- $\frac{1}{4}$	2.77
10x $\frac{1}{4}$	SO32421-10- $\frac{1}{4}$	3.45
10x $\frac{3}{8}$	SO32421-10- $\frac{3}{8}$	3.45
10/7x $\frac{1}{4}$	SO32421-10/7- $\frac{1}{4}$	6.01
10/7x $\frac{3}{8}$	SO32421-10/7- $\frac{3}{8}$	6.14
12x $\frac{1}{4}$	SO32421-12- $\frac{1}{4}$	5.77
12x $\frac{3}{8}$	SO32421-12- $\frac{3}{8}$	5.80
12x $\frac{1}{2}$	SO32421-12- $\frac{1}{2}$	6.53
12/9x $\frac{1}{4}$	SO32421-12/9- $\frac{1}{4}$	5.77
12/9x $\frac{3}{8}$	SO32421-12/9- $\frac{3}{8}$	5.83
12/9x $\frac{1}{2}$	SO32421-12/9- $\frac{1}{2}$	6.53

▼ For tubes with wall thickness of 1.5mm

Male Adaptor Elbow Union

SO 32421 NPT - PN10



Size	Code	Price
6x $\frac{1}{8}$	SO32421-6- $\frac{1}{8}$ NPT	2.00
6x $\frac{1}{4}$	SO32421-6- $\frac{1}{4}$ NPT	2.45
8x $\frac{1}{8}$	SO32421-8- $\frac{1}{8}$ NPT	2.60
8x $\frac{1}{4}$	SO32421-8- $\frac{1}{4}$ NPT	3.66
10x $\frac{1}{4}$	SO32421-10- $\frac{1}{4}$ NPT	3.45
10x $\frac{3}{8}$	SO32421-10- $\frac{3}{8}$ NPT	3.44
10/7x $\frac{1}{4}$	SO32421-10/7- $\frac{1}{4}$ NPT	6.01
10/7x $\frac{3}{8}$	SO32421-10/7- $\frac{3}{8}$ NPT	6.14

▼ For tubes with wall thickness of 1.5mm

Adjustable Elbow Union

SO 32621 - PN10



Size	Code	Price
6x6	SO32621-6-A6	2.30
8x8	SO32621-8-A8	2.60
10x10	SO32621-10-A10	3.45
12x12	SO32621-12-A12	8.27

Panel Mount Elbow Union

SO 32721 - PN10



Size	Code	Price
6	SO32721-6	3.36
8	SO32721-8	4.08
10	SO32721-10	5.59
12	SO32721-12	8.70

Male Adaptor Tee Union

SO 33721 - PN10



Size	Code	Price
6x $\frac{1}{8}$	SO33721-6- $\frac{1}{8}$ -6	3.16
6x $\frac{1}{4}$	SO33721-6- $\frac{1}{4}$ -6	3.68
8x $\frac{1}{8}$	SO33721-8- $\frac{1}{8}$ -8	3.62
8x $\frac{1}{4}$	SO33721-8- $\frac{1}{4}$ -8	4.17
10x $\frac{1}{4}$	SO33721-10- $\frac{1}{4}$ -10	6.30
10x $\frac{3}{8}$	SO33721-10- $\frac{3}{8}$ -10	5.06
▼ 10/7x $\frac{1}{4}$	SO33721-10/7- $\frac{1}{4}$ -10/7	10.05
▼ 10/7x $\frac{3}{8}$	SO33721-10/7- $\frac{3}{8}$ -10/7	10.30

▼ For tubes with wall thickness of 1.5mm

Single Banjo

SO 32821 - 10Bar BSP



Size	Code	Price
6x $\frac{1}{8}$	SO32821-6- $\frac{1}{8}$	5.23
6x $\frac{1}{4}$	SO32821-6- $\frac{1}{4}$	8.22
8x $\frac{1}{8}$	SO32821-8- $\frac{1}{8}$	5.38
8x $\frac{1}{4}$	SO32821-8- $\frac{1}{4}$	8.38
10x $\frac{1}{4}$	SO32821-10- $\frac{1}{4}$	8.74
10/7x $\frac{1}{4}$	SO32821-10/7- $\frac{1}{4}$	9.27

Single Banjo with Valve

SO 37721 - 10Bar BSP



Size	Code	Price
6x $\frac{1}{8}$	SO37721-6- $\frac{1}{8}$	16.14
6x $\frac{1}{4}$	SO37721-6- $\frac{1}{4}$	17.17
8- $\frac{1}{8}$	SO37721-8- $\frac{1}{8}$	15.03
8- $\frac{1}{4}$	SO37721-8- $\frac{1}{4}$	17.54
10- $\frac{1}{4}$	SO37721-10- $\frac{1}{4}$	18.05

Single Banjo - Metric

SO 32821 MTR - 10Bar Metric



Size	Code	Price
6M10x1	SO32821-6-M10x1	7.45
6M12x1.5	SO32821-6-M12x1.5	8.67
6M14x1.5	SO32821-6-M14x1.5	8.99
8M10x1	SO32821-8-M10x1	7.60
8M12x1.5	SO32821-8-M12x1.5	8.82
8M14x1.5	SO32821-8-M14x1.5	9.15
10M12x1.5	SO32821-10-M12x1.5	9.21
10M14x1.5	SO32821-10-M14x1.5	9.51
▼ 10/7M12x1.5	SO32821-10/7-M12x1.5	9.75
▼ 10/7M14x1.5	SO32821-10/7-M14x1.5	10.05

▼ For tubes with wall thickness of 1.5mm

Male Adaptor Hose Nozzle

SO 30511 - PN10



Size	Code	Price
6x $\frac{1}{8}$	SO30511-6-1/8	3.26
6x $\frac{1}{4}$	SO30511-6-1/4	3.90
8x $\frac{1}{4}$	SO30511-8-1/4	4.15
10x $\frac{3}{8}$	SO30511-10-3/8	7.54
12x $\frac{3}{8}$	SO30511-12-3/8	9.69
12x $\frac{1}{2}$	SO30511-12-1/2	8.38

Double Banjo

SO 32921 - 10Bar BSP



Size	Code	Price
6x $\frac{1}{8}$	SO32921-2X6- $\frac{1}{8}$	10.82
6x $\frac{1}{4}$	SO32921-2X6- $\frac{1}{4}$	12.70
8x $\frac{1}{8}$	SO32921-2x8- $\frac{1}{8}$	11.11
8x $\frac{1}{4}$	SO32921-2x8- $\frac{1}{4}$	13.00
10x $\frac{1}{4}$	SO32921-2x10- $\frac{1}{4}$	13.78
10/7x $\frac{1}{4}$	SO32921-2x10/7- $\frac{1}{4}$	14.86

Tee Union

SO 33021 - PN10



Size	Code	Price
6	SO33021-6	3.68
8	SO33021-8	4.69
10	SO33021-10	6.30
▼ 10/7	SO33021-10/7	11.07
12	SO33021-12	12.59
▼ 12/9	SO33021-12/9	12.59

▼ For tubes with wall thickness of 1.5mm

Adjustable Tee Union

SO 33621 - PN10



Size	Code	Price
6x6	SO33621-6-A6-6	3.16
8x8	SO33621-8-A8-8	3.68
10x10	SO33621-10-A10-10	4.98
12x12	SO33621-12-A12-12	11.15

Compression Ferrule

SO 40001



Size	Code	Price
2	SO40001-2	0.33
3	SO40001-3	0.40
4	SO40001-4	0.31
5	SO40001-5	0.39
6	SO40001-6	0.39
8	SO40001-8	0.48
10	SO40001-10	0.55
12	SO40001-12	0.97
14	SO40001-14	1.28
15	SO40001-15	1.28

Union Nut

SO 40020



Size	Code	Price
2	SO40020-2	0.97
3	SO40020-3	0.81
4	SO40020-4	0.80
5	SO40020-5	0.97
6	SO40020-6	1.03
8	SO40020-8	1.12
10	SO40020-10	0.99
12	SO40020-12	1.84
14	SO40020-14	2.41
15	SO40020-15	2.41

Reducing Compression Ferrule

SO 40001 RED



Size	Code	Price
5x3	SO40001-5-3RED	0.55
6x4	SO40001-6-4RED	0.55
6x5	SO40001-6-5RED	0.52
8x6	SO40001-8-6RED	0.65
10x8	SO40001-10-8RED	0.80
12x10	SO40001-12-10RED	1.19
14x12	SO40001-14-12RED	1.68
15x12	SO40001-15-12RED	1.68
15x13	SO40001-15-13RED	1.84

Union Nut

SO 40021 - PN10 -

With ferrule



Size	Code	Price
2	SO40021-2	1.44
3	SO40021-3	1.28
4	SO40021-4	1.25
5	SO40021-5	1.36
6	SO40021-6	1.44
8	SO40021-8	1.61
10	SO40021-10	2.10
12	SO40021-12	2.81
14	SO40021-14	3.71
15	SO40021-15	3.71

Plug

SO 40002 - PN10



Size	Code	Price
2	SO40002-2	0.64
3	SO40002-3	0.64
4	SO40002-4	0.55
5	SO40002-5	0.55
6	SO40002-6	0.55
8	SO40002-8	0.91
10	SO40002-10	0.80
12	SO40002-12	1.03
15	SO40002-15	2.34

Reduction Tube

SO 40021 RED



Size	Code	Price
5x3	SO40021-5-3RED	1.52
6x4	SO40021-6-4RED	1.61
6x5	SO40021-6-5RED	1.61
8x6	SO40021-8-6RED	1.78
10x8	SO40021-10-8RED	2.33
12x10	SO40021-12-10RED	3.05
14x12	SO40021-14-12RED	4.09
15x12	SO40021-15-12RED	4.09
15x13	SO40021-15-13RED	4.26

Stiffener Sleeve*

SO 40003



* Sold in packs of 100

Size	Code	Price
3x2	SO40003-3-2	0.10
4x2	SO40003-4-2	0.08
4x3	SO40003-4-3	0.06
5x3	SO40003-5-3	0.10
6x3	SO40003-6-3	0.12
6x4	SO40003-6-4	0.04
8x5	SO40003-8-5	0.08
8x6	SO40003-8-6	0.08
10x7	SO40003-10-7	0.19
10x8	SO40003-10-8D	0.18
10x8	SO40003-10-8	0.15
12x9	SO40003-12-9	0.24
12x10	SO40003-12-10	0.25
12x11	SO40003-12-11D	0.34
13x11	SO40003-13-11D	0.11
13x11	SO40003-13-11	0.16
14x11	SO40003-14-11	0.20
14x12	SO40003-14-12	0.57
15x13	SO40003-15-13	0.48

Female Adaptor

SO 40030



Size	Code	Price
6x $\frac{1}{8}$	SO40030-6- $\frac{1}{8}$	3.12
6x $\frac{1}{4}$	SO40030-6- $\frac{1}{4}$	3.71
6x $\frac{3}{8}$	SO40030-6- $\frac{3}{8}$	5.32
8x $\frac{1}{8}$	SO40030-8- $\frac{1}{8}$	3.12
8x $\frac{1}{4}$	SO40030-8- $\frac{1}{4}$	3.71
8x $\frac{3}{8}$	SO40030-8- $\frac{3}{8}$	5.32
10x $\frac{1}{4}$	SO40030-10- $\frac{1}{4}$	3.77
10x $\frac{3}{8}$	SO40030-10- $\frac{3}{8}$	4.67
12x $\frac{1}{4}$	SO40030-12- $\frac{1}{4}$	5.70
12x $\frac{3}{8}$	SO40030-12- $\frac{3}{8}$	5.39
12x $\frac{1}{2}$	SO40030-12- $\frac{1}{2}$	8.43
15x $\frac{3}{8}$	SO40030-15- $\frac{3}{8}$	6.21
15x $\frac{1}{2}$	SO40030-15- $\frac{1}{2}$	7.11
15x $\frac{3}{4}$	SO40030-15- $\frac{3}{4}$	12.92

Male Adaptor

SO 40040



Size	Code	Price
6x $\frac{1}{8}$	SO40040-6- $\frac{1}{8}$	1.87
6x $\frac{1}{4}$	SO40040-6- $\frac{1}{4}$	1.93
6x $\frac{3}{8}$	SO40040-6- $\frac{3}{8}$	2.73
6x $\frac{1}{2}$	SO40040-6- $\frac{1}{2}$	7.71
8x $\frac{1}{8}$	SO40040-8- $\frac{1}{8}$	2.63
8x $\frac{1}{4}$	SO40040-8- $\frac{1}{4}$	1.84
8x $\frac{3}{8}$	SO40040-8- $\frac{3}{8}$	4.77
10x $\frac{1}{4}$	SO40040-10- $\frac{1}{4}$	2.83
10x $\frac{3}{8}$	SO40040-10- $\frac{3}{8}$	2.80
10x $\frac{1}{2}$	SO40040-10- $\frac{1}{2}$	4.03
12x $\frac{1}{4}$	SO40040-12- $\frac{1}{4}$	3.38
12x $\frac{3}{8}$	SO40040-12- $\frac{3}{8}$	3.45
12x $\frac{1}{2}$	SO40040-12- $\frac{1}{2}$	5.06
15x $\frac{3}{8}$	SO40040-15- $\frac{3}{8}$	6.10
15x $\frac{1}{2}$	SO40040-15- $\frac{1}{2}$	5.87
15x $\frac{3}{4}$	SO40040-15- $\frac{3}{4}$	10.44

Male Adaptor

SO 40040 - NPT



Size	Code	Price
6x $\frac{1}{8}$	SO40040-6- $\frac{1}{8}$ NPT	1.99
6x $\frac{1}{4}$	SO40040-6- $\frac{1}{4}$ NPT	2.41
7x $\frac{1}{8}$	SO40040-8- $\frac{1}{8}$ NPT	2.10
7x $\frac{1}{4}$	SO40040-8- $\frac{1}{4}$ NPT	2.33
10x $\frac{1}{4}$	SO40040-10- $\frac{1}{4}$ NPT	3.05

Hose Nozzle

SO 40503 - PN10



Size	Code	Price
5x3	SO40503-A5-3	1.05
6x3	SO40503-A6-3	1.28
6x4	SO40503-A6-4	1.28
6x8	SO40503-A6-8	1.44
6x6	SO40503-A6-6	1.28
8x4	SO40503-A8-4	1.78
8x5	SO40503-A8-5	1.78
8x6	SO40503-A8-6	1.42
8x8	SO40503-A8-8	1.68
8x10	SO40503-A8-10	1.79
10x8	SO40503-A10-8	1.80
10x10	SO40503-A10-10	1.80
10x12	SO40503-A10-12	1.99
10x13	SO40503-A10-13	2.41
12x10	SO40503-A12-10	1.99
12x13	SO40503-A12-13	2.61
15x13	SO40503-A15-13	3.22

Hose Nozzle Assembly

SO 40526 - PN10



Size	Code	Price
5x3	SO40526-A5-3	4.33
6x3	SO40526-A6-3	4.69
6x4	SO40526-A6-4	4.69
6x6	SO40526-A6-6	4.69
6x8	SO40526-A6-8	4.87
8x4	SO40526-A8-4	7.26
8x5	SO40526-A8-5	7.31
8x6	SO40526-A8-6	8.41
8x8	SO40526-A8-8	5.32
8x10	SO40526-A8-10	5.49
10x8	SO40526-A10-8	5.99
10x10	SO40526-A10-10	5.53
10x12	SO40526-A10-12	6.17
10x13	SO40526-A10-13	6.26
12x10	SO40526-A12-10	6.97
15x13	SO40526-A15-13	9.21

Straight Compression Union

SO 41021



Size	Code	Price
2	SO41021-2	4.66
3	SO41021-3	3.82
3.2	SO41021-3.2	4.42
4	SO41021-4	4.01
5	SO41021-5	4.51
6	SO41021-6	4.42
8	SO41021-8	4.98
10	SO41021-10	6.03
12	SO41021-12	7.48
13	SO41021-13	11.81
14	SO41021-14	10.69
15	SO41021-15	10.69

Straight Reduction Union

SO 41021 RED



Size	Code	Price
3x2	SO41021-3-2RED	4.49
5x3	SO41021-5-3RED	4.66
5x4	SO41021-5-4RED	4.26
6x4	SO41021-6-4RED	4.44
6x5	SO41021-6-5RED	4.98
8x4	SO41021-8-4RED	4.98
8x5	SO41021-8-5RED	4.98
8x6	SO41021-8-6RED	4.89
10x8	SO41021-10-8RED	6.26
12x8	SO41021-12-8RED	8.99
12x10	SO41021-12-10RED	7.71
14x8	SO41021-14-8RED	8.60
14x10	SO41021-14-10RED	9.09
14x12	SO41021-14-12RED	11.08
15x8	SO41021-15-8RED	9.30
15x10	SO41021-15-10RED	9.09
15x12	SO41021-15-12RED	11.08
15x13	SO41021-15-13RED	11.25

Male Adaptor Union

SO 41121



Size	Code	Price
2x1/8	SO41121-2-1/8	2.81
3x1/8	SO41121-3-1/8	5.32
4x1/8	SO41121-4-1/8	2.31
4x1/4	SO41121-4-1/4	3.31
4x3/8	SO41121-4-3/8	4.19
5x1/8	SO41121-5-1/8	3.16
5x1/4	SO41121-5-1/4	3.41
5x3/8	SO41121-5-3/8	4.19
6x1/8	SO41121-6-1/8	2.45
6x1/4	SO41121-6-1/4	3.25
6x3/8	SO41121-6-3/8	4.03
6x1/2	SO41121-6-1/2	5.98
8x1/8	SO41121-8-1/8	2.98
8x1/4	SO41121-8-1/4	3.41
8x3/8	SO41121-8-3/8	4.19
8x1/2	SO41121-8-1/2	5.85
10x1/4	SO41121-10-1/4	3.80
10x3/8	SO41121-10-3/8	4.59
10x1/2	SO41121-10-1/2	6.27
12x1/4	SO41121-12-1/4	5.32
12x3/8	SO41121-12-3/8	5.32
12x1/2	SO41121-12-1/2	6.87
12x3/4	SO41121-12-3/4	10.29
13x1/4	SO41121-13-1/4	9.81
13x3/8	SO41121-13-3/8	8.46
13x1/2	SO41121-13-1/2	8.46
13x3/4	SO41121-13-3/4	10.76
14x1/4	SO41121-14-1/4	9.26
14x3/8	SO41121-14-3/8	7.89
14x1/2	SO41121-14-1/2	7.89
14x3/4	SO41121-14-3/4	10.21
15x1/4	SO41121-15-1/4	9.26
15x3/8	SO41121-15-3/8	7.89
15x1/2	SO41121-15-1/2	7.89
15x3/4	SO41121-15-3/4	9.91

Male Adaptor Union

SO 41121 NPT



Size	Code	Price
3x1/8	SO41121-3-1/8NPT	2.90
4x1/8	SO41121-4-1/8NPT	2.51
4x1/4	SO41121-4-1/4NPT	3.41
5x1/8	SO41121-5-1/8NPT	2.74
5x1/4	SO41121-5-1/4NPT	3.41
6x1/8	SO41121-6-1/8NPT	2.76
6x1/4	SO41121-6-1/4NPT	3.25
6x3/8	SO41121-6-3/8NPT	4.66
6x1/2	SO41121-6-1/2NPT	6.70
8x1/4	SO41121-8-1/4NPT	3.56
8x3/8	SO41121-8-3/8NPT	4.64
8x1/2	SO41121-8-1/2NPT	5.96
10x1/4	SO41121-10-1/4NPT	4.03
10x3/8	SO41121-10-3/8NPT	4.82
10x1/2	SO41121-10-1/2NPT	8.63
12x1/4	SO41121-12-1/4NPT	5.70
12x3/8	SO41121-12-3/8NPT	5.38
12x1/2	SO41121-12-1/2NPT	8.39
13x1/2	SO41121-13-1/2NPT	9.48
14x1/2	SO41121-14-1/2NPT	8.94
15x1/2	SO41121-15-1/2NPT	8.94

Male Adaptor Union

SO 41124 - With edge seal



Size	Code	Price
2xM5	SO41124-2-M5	2.89
3xM5	SO41124-3-M5	2.62
3xM6	SO41124-3-M6x0.75	3.01
3xM8	SO41124-3-M8x1	3.17
3.2xM5	SO41124-3.2-M5	2.63
4xM5	SO41124-4-M5	2.63
4xM6	SO41124-4-M6x1	2.63
4xM8	SO41124-4-M8x1	2.76
4xM10	SO41124-4-M10x1	3.47
5xM5	SO41124-5-M5	2.63
5xM6	SO41124-5-M6	2.86
5xM8	SO41124-5-M8x1	3.01
5xM10	SO41124-5-M10x1	3.47
6xM5	SO41124-6-M5	2.53
6xM8	SO41124-6-M8x1	3.17
6xM10	SO41124-6-M10x1	3.32
6xM12	SO41124-6-M12x1.5	4.75
8xM12	SO41124-8-M12x1.5	4.60
8xM14	SO41124-8-M14x1.5	5.70
10xM12	SO41124-10-M12x1.5	5.38
10xM14	SO41124-10-M14x1.5	5.44
10xM16	SO41124-10-M16x1.5	10.99
12xM16	SO41124-12-M16x1.5	10.76
12xM18	SO41124-12-M18x1.5	12.03
12xM22	SO41124-12-M22x1.5	10.76
13xM18	SO41124-13-M18x1.5	12.18
13xM22	SO41124-13-M22x1.5	12.18
14xM18	SO41124-14-M18x1.5	11.64
14xM22	SO41124-14-M22x1.5	11.64
15xM18	SO41124-15-M18x1.5	11.64
15xM22	SO41124-15-M22x1.5	11.64

Male Adaptor Union

SO 41124 OR - O-Ring FPM - PN10



Size	Code	Price
4x1/8	SO41124-4-1/8OR	4.27
4x1/4	SO41124-4-1/4OR	5.38
5x1/8	SO41124-5-1/8OR	4.27
5x1/4	SO41124-5-1/4OR	5.38
6x1/8	SO41124-6-1/8OR	4.10
6x1/4	SO41124-6-1/4OR	5.21
8x1/4	SO41124-8-1/4OR	5.21
8x3/8	SO41124-8-3/8OR	7.20
10x1/4	SO41124-10-1/4OR	6.23
10x3/8	SO41124-10-3/8OR	6.96
10x1/2	SO41124-10-1/2OR	10.21
12x3/8	SO41124-12-3/8OR	8.00
12x1/2	SO41124-12-1/2OR	9.21
13x1/2	SO41124-13-1/2OR	11.94
14x3/8	SO41124-14-3/8OR	9.73
14x1/2	SO41124-14-1/2OR	11.45
15x3/8	SO41124-15-3/8OR	9.73
15x1/2	SO41124-15-1/2OR	11.38

Female Adaptor Union

SO 41221



Size	Code	Price
3x $\frac{1}{8}$	SO41221-3- $\frac{1}{8}$	4.36
4x $\frac{1}{8}$	SO41221-4- $\frac{1}{8}$	4.30
4x $\frac{1}{4}$	SO41221-4- $\frac{1}{4}$	4.44
5x $\frac{1}{8}$	SO41221-5- $\frac{1}{8}$	4.26
5x $\frac{1}{4}$	SO41221-5- $\frac{1}{4}$	4.52
6x $\frac{1}{8}$	SO41221-6- $\frac{1}{8}$	4.05
6x $\frac{1}{4}$	SO41221-6- $\frac{1}{4}$	4.26
6x $\frac{3}{8}$	SO41221-6- $\frac{3}{8}$	7.04
6x $\frac{1}{2}$	SO41221-6- $\frac{1}{2}$	8.78
8x $\frac{1}{8}$	SO41221-8- $\frac{1}{8}$	4.33
8x $\frac{1}{4}$	SO41221-8- $\frac{1}{4}$	4.57
8x $\frac{3}{8}$	SO41221-8- $\frac{3}{8}$	6.87
8x $\frac{1}{2}$	SO41221-8- $\frac{1}{2}$	8.63
10x $\frac{1}{4}$	SO41221-10- $\frac{1}{4}$	5.24
10x $\frac{3}{8}$	SO41221-10- $\frac{3}{8}$	9.29
10x $\frac{1}{2}$	SO41221-10- $\frac{1}{2}$	7.65
12x $\frac{1}{4}$	SO41221-12- $\frac{1}{4}$	7.04
12x $\frac{3}{8}$	SO41221-12- $\frac{3}{8}$	8.40
12x $\frac{1}{2}$	SO41221-12- $\frac{1}{2}$	8.46
12x $\frac{3}{4}$	SO41221-12- $\frac{3}{4}$	13.84
13x $\frac{1}{2}$	SO41221-13- $\frac{1}{2}$	12.93
13x $\frac{3}{4}$	SO41221-13- $\frac{3}{4}$	14.89
14x $\frac{1}{2}$	SO41221-14- $\frac{1}{2}$	12.74
14x $\frac{3}{4}$	SO41221-14- $\frac{3}{4}$	14.70
15x $\frac{1}{2}$	SO41221-15- $\frac{1}{2}$	11.44
15x $\frac{3}{4}$	SO41221-15- $\frac{3}{4}$	13.40

Panel Mount Union

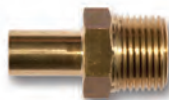
SO 41524



Size	Code	Price
4	SO41524-4	7.20
5	SO41524-5	7.20
6	SO41524-6	6.87
8	SO41524-8	8.40
10	SO41524-10	10.21
12	SO41524-12	13.21
13	SO41524-13	20.10
14	SO41524-14	18.98
15	SO41524-15	18.98

Adjustable Male Adaptor

SO 41600 - PN10



Size	Code	Price
6x $\frac{1}{8}$	SO41600-A6- $\frac{1}{8}$	2.70
6x $\frac{1}{4}$	SO41600-A6- $\frac{1}{4}$	2.86
8x $\frac{1}{8}$	SO41600-A8- $\frac{1}{8}$	2.58
8x $\frac{1}{4}$	SO41600-A8- $\frac{1}{4}$	2.37
10x $\frac{1}{4}$	SO41600-A10- $\frac{1}{4}$	2.45
10x $\frac{3}{8}$	SO41600-A10- $\frac{3}{8}$	3.83
10x $\frac{1}{2}$	SO41600-A10- $\frac{1}{2}$	4.19
12x $\frac{1}{4}$	SO41600-A12- $\frac{1}{4}$	3.87
12x $\frac{3}{8}$	SO41600-A12- $\frac{3}{8}$	3.15
12x $\frac{1}{2}$	SO41600-A12- $\frac{1}{2}$	4.27
14x $\frac{1}{2}$	SO41600-A14- $\frac{1}{2}$	7.67
15x $\frac{3}{8}$	SO41600-A15- $\frac{3}{8}$	7.20

Female Adaptor Union

SO 41221 NPT



Size	Code	Price
6x $\frac{1}{8}$	SO41221-6- $\frac{1}{8}$ NPT	4.43
6x $\frac{1}{4}$	SO41221-6- $\frac{1}{4}$ NPT	4.82
6x $\frac{3}{8}$	SO41221-6- $\frac{3}{8}$ NPT	8.32
8x $\frac{1}{4}$	SO41221-8- $\frac{1}{4}$ NPT	5.89
8x $\frac{3}{8}$	SO41221-8- $\frac{3}{8}$ NPT	8.18
8x $\frac{1}{2}$	SO41221-8- $\frac{1}{2}$ NPT	8.95
10x $\frac{1}{4}$	SO41221-10- $\frac{1}{4}$ NPT	5.70
10x $\frac{3}{8}$	SO41221-10- $\frac{3}{8}$ NPT	9.30
10x $\frac{1}{2}$	SO41221-10- $\frac{1}{2}$ NPT	9.73
10x $\frac{3}{4}$	SO41221-10- $\frac{3}{4}$ NPT	9.29
12x $\frac{1}{2}$	SO41221-12- $\frac{1}{2}$ NPT	9.48

Adjustable Male Adaptor Assembly

SO 41625 - PN10



Size	Code	Price
6x $\frac{1}{8}$	SO41625-A6- $\frac{1}{8}$	3.87
6x $\frac{1}{4}$	SO41625-A6- $\frac{1}{4}$	5.44
8x $\frac{1}{8}$	SO41625-A8- $\frac{1}{8}$	5.44
8x $\frac{1}{4}$	SO41625-A8- $\frac{1}{4}$	5.44
10x $\frac{1}{4}$	SO41625-A10- $\frac{1}{4}$	5.44
10x $\frac{3}{8}$	SO41625-A10- $\frac{3}{8}$	6.41
10x $\frac{1}{2}$	SO41625-A10- $\frac{1}{2}$	7.84
12x $\frac{1}{4}$	SO41625-A12- $\frac{1}{4}$	8.30
12x $\frac{3}{8}$	SO41625-A12- $\frac{3}{8}$	7.84
12x $\frac{1}{2}$	SO41625-A12- $\frac{1}{2}$	9.41
14x $\frac{1}{2}$	SO41625-A14- $\frac{1}{2}$	14.48
15x $\frac{3}{8}$	SO41625-A15- $\frac{3}{8}$	14.00

Pipe Stub

SO 41300 - PN10



Size	Code	Price
6	SO41300-A6	2.06
8	SO41300-A8	1.91
10	SO41300-A10	2.29
12	SO41300-A12	3.08
14	SO41300-A14	3.17
15	SO41300-A15	3.41

Adjustable Female Adaptor

SO 41704



Size	Code	Price
12x $\frac{3}{8}$	SO41704-A12- $\frac{3}{8}$	7.91
12x $\frac{1}{2}$	SO41704-A12- $\frac{1}{2}$	11.37
15x $\frac{1}{2}$	SO41704-A15- $\frac{1}{2}$	12.81
15x $\frac{3}{4}$	SO41704-A15- $\frac{3}{4}$	16.67

Panel Mount Union

SO 41521



Size	Code	Price
3	SO41521-3	5.44
4	SO41521-4	7.64
5	SO41521-5	7.64
6	SO41521-6	7.33
8	SO41521-8	7.12
10	SO41521-10	9.57
12	SO41521-12	12.73
13	SO41521-13	18.76
14	SO41521-14	17.94
15	SO41521-15	17.94

Adjustable Female Adaptor Assembly

SO 41726



Size	Code	Price
12x $\frac{3}{8}$	SO41726-A12- $\frac{3}{8}$	12.63
12x $\frac{1}{2}$	SO41726-A12- $\frac{1}{2}$	16.18
15x $\frac{1}{2}$	SO41726-A15- $\frac{1}{2}$	18.68
15x $\frac{3}{4}$	SO41726-A15- $\frac{3}{4}$	22.64

Reduced Union

SO 41821 - PN10



Size	Code	Price
10x4	SO41821-10-4	4.69
10x5	SO41821-10-5	4.69
10x6	SO41821-10-6	4.53
12x6	SO41821-12-6	5.25
12x8	SO41821-12-8	5.13
15x8	SO41821-15-8	6.68
15x10	SO41821-15-10	6.44
18x10	SO41821-18-10	10.53
18x12	SO41821-18-12	10.53
22x12	SO41821-22-12	30.44
22x13	SO41821-22-13	30.59
22x14	SO41821-22-14	15.20
22x15	SO41821-22-15	15.20

Adjustable Elbow Union

SO 42621



Size	Code	Price
4x6	SO42621-4-A6	5.15
5x6	SO42621-5-A6	5.15
6x6	SO42621-6-A6	4.85
6x8	SO42621-06-A8	5.87
8x8	SO42621-8-A8	5.70
8x10	SO42621-8-A10	7.57
10x10	SO42621-10-A10	7.55
10x12	SO42621-10-A12	8.92
12x12	SO42621-12-A12	8.67
13x15	SO42621-13-A15	11.64
14x15	SO42621-14-A15	11.08
15x15	SO42621-15-A15	11.08
15x18	SO42621-15-A18	13.98

Elbow

SO 42021



Size	Code	Price
2	SO42021-2	6.15
3	SO42021-3	5.86
3.2	SO42021-3.2	5.86
4	SO42021-4	4.82
5	SO42021-5	5.87
6	SO42021-6	5.56
8	SO42021-8	6.26
10	SO42021-10	8.67
12	SO42021-12	10.28
13	SO42021-13	14.93
14	SO42021-14	13.82
15	SO42021-15	13.82

Adjustable Elbow Union Assembly

SO 42625



Size	Code	Price
4x6	SO42625-4-A6	7.65
5x6	SO42625-5-A6	7.65
6x6	SO42625-6-A6	7.49
6x8	SO42625-6-A8	8.54
8x8	SO42625-8-A8	8.37
8x10	SO42625-8-A10	10.93
10x10	SO42625-10-A10	9.89
10x12	SO42625-10-A12	13.20
12x12	SO42625-12-A12	12.97
13x15	SO42625-13-A15	16.81
14x15	SO42625-14-A15	16.26
15x15	SO42625-15-A15	15.01
15x18	SO42625-15-A18	20.98

Male Adaptor Elbow

SO 42421



Size	Code	Price
3x1/8	SO42421-3-1/8	4.09
4x1/8	SO42421-4-1/8	3.71
4x1/4	SO42421-4-1/4	4.82
5x1/8	SO42421-5-1/8	3.95
5x1/4	SO42421-5-1/4	5.25
6x1/8	SO42421-6-1/8	4.09
6x1/4	SO42421-6-1/4	4.67
8x1/8	SO42421-8-1/8	4.82
8x1/4	SO42421-8-1/4	7.05
8x3/8	SO42421-8-3/8	7.31
10x1/4	SO42421-10-1/4	6.83
10x3/8	SO42421-10-3/8	7.05
10x1/2	SO42421-10-1/2	10.36
12x1/4	SO42421-12-1/4	7.95
12x3/8	SO42421-12-3/8	8.11
12x1/2	SO42421-12-1/2	10.11
13x1/2	SO42421-13-1/2	10.53
14x3/8	SO42421-14-3/8	9.64
14x1/2	SO42421-14-1/2	9.96
14x3/4	SO42421-14-3/4	15.93
15x3/8	SO42421-15-3/8	9.64
15x1/2	SO42421-15-1/2	9.20
15x3/4	SO42421-15-3/4	14.93

Panel Mount Elbow

SO 42721



Size	Code	Price
4	SO42721-4	7.94
5	SO42721-5	7.94
6	SO42721-6	7.62
8	SO42721-8	9.44
10	SO42721-10	14.77
12	SO42721-12	14.20
13	SO42721-13	20.64
14	SO42721-14	19.51
15	SO42721-15	19.51

Single Banjo

SO 42824



Size	Code	Price
3x1/8	SO42824-3-1/8	10.76
4x1/8	SO42824-4-1/8	8.97
5x1/8	SO42824-5-1/8	10.59
6x1/8	SO42824-6-1/8	10.91
6x1/4	SO42824-6-1/4	16.29
8x1/8	SO42824-8-1/8	9.33
8x1/4	SO42824-8-1/4	16.14
10x1/4	SO42824-10-1/4	15.83
10x3/8	SO42824-10-3/8	15.33
12x3/8	SO42824-12-3/8	20.67
12x1/2	SO42824-12-1/2	18.62
13x1/2	SO42824-13-1/2	18.62
14x1/2	SO42824-14-1/2	19.00
15x1/2	SO42824-15-1/2	24.58

Double Banjo

SO 42924



Size	Code	Price
3x1/8	SO42924-2x2-1/8	20.56
4x1/8	SO42924-2x4-1/8	19.75
5x1/8	SO42924-2x5-1/8	20.23
6x1/8	SO42924-2x6-1/8	20.86
6x1/4	SO42924-2x6-1/4	26.01
8x1/8	SO42924-2x8-1/8	20.86
8x1/4	SO42924-2x8-1/4	25.68
10x1/4	SO42924-2x10-1/4	26.01

Tee Union

SO 43021



Size	Code	Price
2	SO43021-2	15.09
3	SO43021-3	14.62
4	SO43021-4	14.54
5	SO43021-5	15.25
6	SO43021-6	7.62
8	SO43021-8	9.16
10	SO43021-10	11.81
12	SO43021-12	14.20
13	SO43021-13	20.86
14	SO43021-14	19.18
15	SO43021-15	20.55

Reducing Tee Union

SO 43021 RED



Size	Code	Price
5x3x3	SO43021-5-3-3	15.59
5x3x5	SO43021-5-3-5	15.42
6x4x4	SO43021-6-4-4	7.94
6x4x6	SO43021-6-4-6	7.82
6x8x6	SO43021-6-8-6	9.47
6x10x6	SO43021-6-10-6	13.25
8x6x6	SO43021-8-6-6	9.47
8x6x8	SO43021-8-6-8	9.30
8x10x8	SO43021-8-10-8	13.25
10x6x6	SO43021-10-6-6	13.25
10x6x10	SO43021-10-6-10	13.48
10x8x10	SO43021-10-8-10	12.04
10x10x8	SO43021-10-10-8	12.04
10x12x10	SO43021-10-12-10	14.69
12x6x12	SO43021-12-6-12	15.90
12x8x12	SO43021-12-8-12	15.74
12x10x10	SO43021-12-10-10	14.69
12x12x10	SO43021-12-12-10	14.45
12x14x12	SO43021-12-14-12	19.98
12x15x12	SO43021-12-15-12	19.98
14x10x10	SO43021-14-10-10	20.23
14x10x12	SO43021-14-10-12	22.24
14x10x14	SO43021-14-10-14	21.84
14x12x12	SO43021-14-12-12	19.98
14x12x14	SO43021-14-12-14	19.58
14x14x10	SO43021-14-14-10	21.84
14x14x12	SO43021-14-14-12	19.58
14x17x14	SO43021-14-17-14	24.25
15x10x10	SO43021-15-10-10	20.23
15x10x12	SO43021-15-10-12	22.24
15x10x15	SO43021-15-10-15	21.85
15x12x12	SO43021-15-12-12	19.99
15x12x15	SO43021-15-12-15	19.99
15x15x10	SO43021-15-15-10	21.84
15x15x12	SO43021-15-15-12	19.58
15x18x15	SO43021-15-18-15	24.80
15x22x15	SO43021-15-22-15	39.66

Adjustable Tee Union

SO 43621 T



Size	Code	Price
6x4	SO43621-4-A6-4	7.14
6x5	SO43621-5-A6-5	7.14
6x6	SO43621-6-A6-6	6.82
6x8	SO43621-6-A8-6	8.03
8x8	SO43621-8-A8-8	8.04
10x8	SO43621-8-A10-8	11.01
10x10	SO43621-10-A10-10	10.53

Male Adaptor L Union

SO 43721 L



Size	Code	Price
3x1/8	SO43721-1/8-3-3	11.81
4x1/8	SO43721-1/8-4-4	11.01
5x1/8	SO43721-1/8-5-5	11.47
6x1/8	SO43721-1/8-6-6	6.33
4x1/4	SO43721-1/4-4-4	7.71
5x1/4	SO43721-1/4-5-5	7.71
6x1/4	SO43721-1/4-6-6	7.55
8x1/4	SO43721-1/4-8-8	7.71
10x1/4	SO43721-1/4-10-10	10.10

Male Adaptor Tee Union

SO 43721 T



Size	Code	Price
3x1/8	SO43721-3-1/8-3	8.28
4x1/8	SO43721-4-1/8-4	7.94
4x1/4	SO43721-4-1/4-4	7.71
5x1/8	SO43721-5-1/8-5	8.42
5x1/4	SO43721-5-1/4-5	7.71
6x1/8	SO43721-6-1/8-6	6.68
6x1/4	SO43721-6-1/4-6	7.38
8x1/4	SO43721-8-1/4-8	7.71
10x1/4	SO43721-10-1/4-10	9.48

Cross

SO 44021



Size	Code	Price
4	SO44021-4	11.49
5	SO44021-5	11.49
6	SO44021-6	10.92
8	SO44021-8	12.53
10	SO44021-10	16.69
12	SO44021-12	22.28
13	SO44021-13	33.16
14	SO44021-14	30.90
15	SO44021-15	30.90

Taper Seat Non Return Valve

SO CV03A21 - FPM



Size	Code	Price
4	SOCV03A21-4	19.58
5	SOCV03A21-5	19.58
6	SOCV03A21-6	22.89
8	SOCV03A21-8	22.46
10	SOCV03A21-10	33.45
12	SOCV03A21-12	37.76

Regulating Valve

SO NV01C21 - PTFE



Size	Code	Price
4	SONV01C21-4-4	25.90
5	SONV01C21-5-5	25.39
6	SONV01C21-6-6	29.60
8	SONV01C21-8-8	31.93
10	SONV01C21-10-10	40.06
12	SONV01C21-12-12	45.33

Stainless Steel Tubing 316L

ID	OD	Code	Price (m)
4	6	450.1006.200	
6	8	450.1006.300	
7	10	450.1006.355	
8	10	450.1006.350	on application
9	12	450.1006.405	
10	12	450.1006.401	
12	15	450.1006.555	
13	15	450.1006.550	

Compression Ferrule

SO 50001



Size	Code	Price
2	SO50001-2	4.77
3	SO50001-3	5.61
3.2	SO50001-3.2	5.77
4	SO50001-4	5.34
5	SO50001-5	5.52
6	SO50001-6	3.73
8	SO50001-8	5.07
10	SO50001-10	5.34
12	SO50001-12	5.95
15	SO50001-15	8.10

Reducing Compression Ferrule

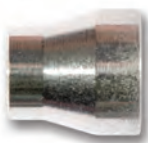
SO 50001 RED



Size	Code	Price
3x1.6	SO50001-3-1.6RED	6.75
4x2	SO50001-4-2RED	6.84
5x3	SO50001-5-3RED	6.75
6x4	SO50001-6-4RED	4.34
6x5	SO50001-6-5RED	3.99
8x6	SO50001-8-6RED	5.34
10x8	SO50001-10-8RED	6.66
12x10	SO50001-12-10RED	7.48
15x12	SO50001-15-12RED	10.58
15x14	SO50001-15-14RED	10.58

Plug

SO 50002 - PN10



Size	Code	Price
2	SO50002-2	7.83
3	SO50002-3	7.30
4	SO50002-4	6.58
5	SO50002-5	5.24
6	SO50002-6	3.62
8	SO50002-8	5.42
10	SO50002-10	7.30
12	SO50002-12	7.21
15	SO50002-15	12.82

Stiffener Sleeve

SO 50003



Size	Code	Price
4x2	SO50003-4-2	0.89
4x3	SO50003-4-3	1.22
5x3	SO50003-5-3	0.62
5x4	SO50003-5-4	0.44
6x4	SO50003-6-4	0.52
6x5	SO50003-6-5	0.56
8x5	SO50003-8-5	0.60
8x6	SO50003-8-6	0.53
10x7	SO50003-10-7	0.76
10x8	SO50003-10-8	0.75
10x9	SO50003-10-9	1.11
12x9	SO50003-12-9	1.12
12x10	SO50003-12-10	1.12
14x12	SO50003-14-12	1.54
15x12	SO50003-15-12	1.56
15x13	SO50003-15-13	1.69

Union Nut

SO 50020 - PN10



Size	Code	Price
2	SO50020-2	9.52
3	SO50020-3	5.94
4	SO50020-4	7.74
5	SO50020-5	9.88
6	SO50020-6	4.89
8	SO50020-8	6.14
10	SO50020-10	9.21
12	SO50020-12	11.83
15	SO50020-15	17.66

Union Nut

SO 50021 - PN10 - With ferrule



Size	Code	Price
2	SO50021-2	12.27
3	SO50021-3	12.42
4	SO50021-4	13.06
5	SO50021-5	15.99
1/8	SO50021-6	8.63
8	SO50021-8	11.18
10	SO50021-10	15.12
12	SO50021-12	17.77
15	SO50021-15	23.09

Reduction Tube

SO 50021 RED



Size	Code	Price
3x1.6	SO50021-3-1.6RED	13.97
5x3	SO50021-5-3RED	16.63
6x4	SO50021-6-4RED	9.24
6x5	SO50021-6-5RED	9.24
8x6	SO50021-8-6RED	11.46
10x8	SO50021-10-8RED	16.28
12x10	SO50021-12-10RED	17.32
15x12	SO50021-15-12RED	22.41
15x14	SO50021-15-14RED	25.59
18x15	SO50021-18-15RED	47.28

Female Adaptor

SO 50030



Size	Code	Price
6x1/8	SO50030-6-1/8	22.48
6x1/4	SO50030-6-1/4	24.00
6x3/8	SO50030-6-3/8	25.76
6x1/2	SO50030-6-1/2	31.39
8x1/8	SO50030-8-1/8	27.28
8x1/4	SO50030-8-1/4	22.79
8x3/8	SO50030-8-3/8	25.98
8x1/2	SO50030-8-1/2	33.15
10x1/4	SO50030-10-1/4	24.17
10x3/8	SO50030-10-3/8	29.34
10x1/2	SO50030-10-1/2	35.67
12x1/4	SO50030-12-1/4	25.48
12x3/8	SO50030-12-3/8	27.81
12x1/2	SO50030-12-1/2	35.73
15x1/4	SO50030-15-1/4	33.23
15x3/8	SO50030-15-3/8	34.66
15x1/2	SO50030-15-1/2	43.82
15x3/4	SO50030-15-3/4	48.72

Male Adaptor

SO 50040



Size	Code	Price
5x $\frac{1}{8}$	SO50040-5-1/8	19.29
6x $\frac{1}{8}$	SO50040-6-1/8	19.00
6x $\frac{1}{4}$	SO50040-6-1/4	19.85
6x $\frac{3}{8}$	SO50040-6-3/8	24.00
6x $\frac{1}{2}$	SO50040-6-1/2	23.50
8x $\frac{1}{8}$	SO50040-8-1/8	20.46
8x $\frac{1}{4}$	SO50040-8-1/4	19.87
8x $\frac{3}{8}$	SO50040-8-3/8	25.29
8x $\frac{1}{2}$	SO50040-8-1/2	25.99
10x $\frac{1}{8}$	SO50040-10-1/8	23.28
10x $\frac{1}{4}$	SO50040-10-1/4	23.63
10x $\frac{3}{8}$	SO50040-10-3/8	24.90
10x $\frac{1}{2}$	SO50040-10-1/2	27.48
12x $\frac{1}{4}$	SO50040-12-1/4	24.82
12x $\frac{3}{8}$	SO50040-12-3/8	28.00
12x $\frac{1}{2}$	SO50040-12-1/2	24.71
15x $\frac{3}{8}$	SO50040-15-3/8	32.96
15x $\frac{1}{2}$	SO50040-15-1/2	32.08
15x $\frac{3}{4}$	SO50040-15-3/4	40.00

Hose Nozzle

SO 50503 - PN10



Size	Code	Price
6x4	SO50503-A6-4	11.08
6x6	SO50503-A6-6	11.18
8x6	SO50503-A8-6	12.81
8x8	SO50503-A8-8	12.69
10x8	SO50503-A10-8	43.88
10x10	SO50503-A10-10	13.73
12x10	SO50503-A12-10	36.76
12x13	SO50503-A12-13	17.15
15x13	SO50503-A15-13	43.15

Hose Nozzle Assembly

SO 50526 - PN10



Size	Code	Price
6x4	SO50526-A6-4	24.57
6x6	SO50526-A6-6	24.57
8x6	SO50526-A8-6	27.90
8x8	SO50526-A8-8	29.49
10x8	SO50526-A10-8	43.88
10x10	SO50526-A10-10	33.42
12x10	SO50526-A12-10	36.76
12x13	SO50526-A12-13	41.77
15x13	SO50526-A15-13	43.15

Straight Compression Union

SO 51021



Size	Code	Price
2	SO51021-2	34.18
3	SO51021-3	38.58
4	SO51021-4	38.41
5	SO51021-5	38.76
6	SO51021-6	28.71
8	SO51021-8	33.86
10	SO51021-10	42.10
12	SO51021-12	47.46
14	SO51021-14	71.63
15	SO51021-15	59.88

Straight Reduction Union

SO 51021 RED



Size	Code	Price
3x2	SO51021-3-2RED	38.31
5x3	SO51021-5-3RED	40.01
6x4	SO51021-6-4RED	29.34
6x5	SO51021-6-5RED	29.04
8x6	SO51021-8-6RED	34.14
10x6	SO51021-10-6RED	40.09
10x8	SO51021-10-8RED	43.03
12x10	SO51021-12-10RED	48.93
15x12	SO51021-15-12RED	69.17
15x14	SO51021-15-14RED	69.17

Male Adaptor Union

SO 51121



Size	Code	Price
2x $\frac{1}{8}$	SO51121-2- $\frac{1}{8}$	35.37
3x $\frac{1}{8}$	SO51121-3- $\frac{1}{8}$	29.00
4x $\frac{1}{8}$	SO51121-4- $\frac{1}{8}$	26.10
4x $\frac{1}{4}$	SO51121-4- $\frac{1}{4}$	16.92
5x $\frac{1}{8}$	SO51121-5- $\frac{1}{8}$	29.61
5x $\frac{1}{4}$	SO51121-5- $\frac{1}{4}$	20.55
6x $\frac{1}{8}$	SO51121-6- $\frac{1}{8}$	18.67
6x $\frac{1}{4}$	SO51121-6- $\frac{1}{4}$	20.70
6x $\frac{3}{8}$	SO51121-6- $\frac{3}{8}$	27.99
6x $\frac{1}{2}$	SO51121-6- $\frac{1}{2}$	29.60
8x $\frac{1}{8}$	SO51121-8- $\frac{1}{8}$	22.68
8x $\frac{1}{4}$	SO51121-8- $\frac{1}{4}$	21.06
8x $\frac{3}{8}$	SO51121-8- $\frac{3}{8}$	26.66
8x $\frac{1}{2}$	SO51121-8- $\frac{1}{2}$	32.26
10x $\frac{1}{4}$	SO51121-10- $\frac{1}{4}$	24.98
10x $\frac{3}{8}$	SO51121-10- $\frac{3}{8}$	28.08
10x $\frac{1}{2}$	SO51121-10- $\frac{1}{2}$	35.84
10x $\frac{3}{4}$	SO51121-10- $\frac{3}{4}$	73.87
12x $\frac{1}{4}$	SO51121-12- $\frac{1}{4}$	30.89
12x $\frac{3}{8}$	SO51121-12- $\frac{3}{8}$	33.62
12x $\frac{1}{2}$	SO51121-12- $\frac{1}{2}$	38.99
14x $\frac{1}{2}$	SO51121-14- $\frac{1}{2}$	48.67
15x $\frac{3}{8}$	SO51121-15- $\frac{3}{8}$	45.42
15x $\frac{1}{2}$	SO51121-15- $\frac{1}{2}$	46.65
15x $\frac{3}{4}$	SO51121-15- $\frac{3}{4}$	82.38

Male Adaptor Union

SO 51124 - With edge seal



Size	Code	Price
2x $\frac{1}{8}$	SO51124-2- $\frac{1}{8}$	28.62
3x $\frac{1}{8}$	SO51124-3- $\frac{1}{8}$	28.89
4x $\frac{1}{8}$	SO51124-4- $\frac{1}{8}$	24.11
4x $\frac{1}{4}$	SO51124-4- $\frac{1}{4}$	25.67
5x $\frac{1}{8}$	SO51124-5- $\frac{1}{8}$	24.10
5x $\frac{1}{4}$	SO51124-5- $\frac{1}{4}$	25.67
6x $\frac{1}{8}$	SO51124-6- $\frac{1}{8}$	23.46
6x $\frac{1}{4}$	SO51124-6- $\frac{1}{4}$	23.63
6x $\frac{3}{8}$	SO51124-6- $\frac{3}{8}$	33.06
6x $\frac{1}{2}$	SO51124-6- $\frac{1}{2}$	35.11
8x $\frac{1}{8}$	SO51124-8- $\frac{1}{8}$	30.50
8x $\frac{1}{4}$	SO51124-8- $\frac{1}{4}$	26.66
8x $\frac{3}{8}$	SO51124-8- $\frac{3}{8}$	36.93
8x $\frac{1}{2}$	SO51124-8- $\frac{1}{2}$	37.86
10x $\frac{1}{4}$	SO51124-10- $\frac{1}{4}$	32.12
10x $\frac{3}{8}$	SO51124-10- $\frac{3}{8}$	35.75
10x $\frac{1}{2}$	SO51124-10- $\frac{1}{2}$	41.78
10x $\frac{3}{4}$	SO51124-10- $\frac{3}{4}$	51.39
12x $\frac{1}{4}$	SO51124-12- $\frac{1}{4}$	38.21
12x $\frac{3}{8}$	SO51124-12- $\frac{3}{8}$	36.42
12x $\frac{1}{2}$	SO51124-12- $\frac{1}{2}$	46.02
12x $\frac{3}{4}$	SO51124-12- $\frac{3}{4}$	62.05
14x $\frac{1}{2}$	SO51124-14- $\frac{1}{2}$	74.33
15x $\frac{1}{2}$	SO51124-15- $\frac{1}{2}$	49.57

Female Adaptor Union

SO 51221



Size	Code	Price
3x1/8	SO51221-3-1/8	29.71
4x1/8	SO51221-4-1/8	28.27
4x1/4	SO51221-4-1/4	25.07
5x1/8	SO51221-5-1/8	28.44
5x1/4	SO51221-5-1/4	25.07
6x1/8	SO51221-6-1/8	23.63
6x1/4	SO51221-6-1/4	24.19
6x3/8	SO51221-6-3/8	30.41
6x1/2	SO51221-6-1/2	33.33
8x1/4	SO51221-8-1/4	28.42
8x3/8	SO51221-8-3/8	38.58
8x1/2	SO51221-8-1/2	35.36
10x1/4	SO51221-10-1/4	27.92
10x3/8	SO51221-10-3/8	37.25
10x1/2	SO51221-10-1/2	41.60
12x1/4	SO51221-12-1/4	37.59
12x3/8	SO51221-12-3/8	36.09
12x1/2	SO51221-12-1/2	44.72
14x1/2	SO51221-14-1/2	56.37
15x1/2	SO51221-15-1/2	51.30

Pipe Stub

SO 51300 - PN10



Size	Code	Price
6	SO51300-A6	10.21
8	SO51300-A8	10.85
10	SO51300-A10	12.90
12	SO51300-A12	13.31
15	SO51300-A15	16.45

Weld On Union

SO 51429



Size	Code	Price
3	SO51429-3	25.14
4	SO51429-4	23.75
5	SO51429-5	23.93
6	SO51429-6	19.19
8	SO51429-8	19.98
10	SO51429-10	25.86
12	SO51429-12	31.84
14	SO51429-14	50.93
15	SO51429-15	48.43

Panel Mount Union

SO 51521



Size	Code	Price
2	SO51521-2	46.30
3	SO51521-3	46.85
4	SO51521-4	46.85
5	SO51521-5	49.35
6	SO51521-6	35.73
8	SO51521-8	44.99
10	SO51521-10	54.51
12	SO51521-12	44.99

Panel Mount Reducing Union

SO 51521 RED



Size	Code	Price
3x2	SO51521-3-2	46.58
5x3	SO51521-5-3	50.58
5x4	SO51521-5-4	36.48
6x4	SO51521-6-4	36.60
6x5	SO51521-6-5	36.59
8x6	SO51521-8-6	45.24
10x4	SO51521-10-4	27.72
10x5	SO51521-10-5	27.72
10x6	SO51521-10-6	27.12
10x8	SO51521-10-8	53.26
12x10	SO51521-12-10	68.44

Adjustable Male Adaptor

SO 51600 - PN10



Size	Code	Price
4x1/8	SO51600-A4-1/8	10.58
5x1/8	SO51600-A5-1/8	11.03
6x1/8	SO51600-A6-1/8	10.76
6x1/4	SO51600-A6-1/4	11.02
8x1/8	SO51600-A8-1/8	10.86
8x1/4	SO51600-A8-1/4	12.11
10x1/4	SO51600-A10-1/4	14.68
10x3/8	SO51600-A10-3/8	15.73
10x1/2	SO51600-A10-1/2	22.32
12x1/4	SO51600-A12-1/4	20.46
12x3/8	SO51600-A12-3/8	20.28
12x1/2	SO51600-A12-1/2	22.35
15x1/2	SO51600-A15-1/2	24.89

Adjustable Male Adaptor Assembly

SO 51625 - PN10



Size	Code	Price
4x1/8	SO51625-A4-1/8	25.13
5x1/8	SO51625-A5-1/8	25.76
6x1/8	SO51625-A6-1/8	20.87
6x1/4	SO51625-A6-1/4	22.20
8x1/8	SO51625-A8-1/8	24.79
8x1/4	SO51625-A8-1/4	24.79
10x1/4	SO51625-A10-1/4	28.08
10x3/8	SO51625-A10-3/8	34.13
10x1/2	SO51625-A10-1/2	41.02
12x1/4	SO51625-A12-1/4	40.09
12x3/8	SO51625-A12-3/8	36.64
12x1/2	SO51625-A12-1/2	40.87
15x1/2	SO51625-A15-1/2	51.62

Elbow

SO 52021



Size	Code	Price
2	SO52021-2	53.71
3	SO52021-3	53.71
4	SO52021-4	46.57
5	SO52021-5	46.94
6	SO52021-6	40.53
8	SO52021-8	45.88
10	SO52021-10	57.95
12	SO52021-12	65.41
14	SO52021-14	87.20
15	SO52021-15	82.23

Female Adaptor Elbow

SO 52221



Size	Code	Price
4x1/8	SO52221-4-1/8	49.57
5x1/8	SO52221-5-1/8	55.02
6x1/8	SO52221-6-1/8	54.38
6x1/4	SO52221-6-1/4	56.72
8x1/8	SO52221-8-1/8	61.96
8x1/4	SO52221-8-1/4	56.44
8x3/8	SO52221-8-3/8	73.51
10x1/4	SO52221-10-1/4	67.03
10x3/8	SO52221-10-3/8	72.20
12x3/8	SO52221-12-3/8	75.47
12x1/2	SO52221-12-1/2	105.43
14x1/2	SO52221-14-1/2	105.43
15x1/2	SO52221-15-1/2	102.95

Male Adaptor Elbow

SO 52421



Size	Code	Price
2x1/8	SO52421-2-1/8	34.93
3x1/8	SO52421-3-1/8	34.93
4x1/8	SO52421-4-1/8	33.50
5x1/8	SO52421-5-1/8	33.69
6x1/8	SO52421-6-1/8	31.72
6x1/4	SO52421-6-1/4	36.19
8x1/8	SO52421-8-1/8	35.92
8x1/4	SO52421-8-1/4	35.92
8x3/8	SO52421-8-3/8	41.66
10x1/4	SO52421-10-1/4	43.82
10x3/8	SO52421-10-3/8	49.77
12x1/4	SO52421-12-1/4	47.30
12x3/8	SO52421-12-3/8	48.28
12x1/2	SO52421-12-1/2	61.80
14x1/2	SO52421-14-1/2	61.79
15x1/2	SO52421-15-1/2	48.85

Adjustable Elbow Union Assembly

SO 52625



Size	Code	Price
4x6	SO52625-4-A6	43.08
5x6	SO52625-5-A6	43.08
6x6	SO52625-6-A6	42.03
6x8	SO52625-6-A8	49.49
8x8	SO52625-8-A8	44.18
8x10	SO52625-8-A10	62.58
10x10	SO52625-10-A10	61.25
12x12	SO52625-12-A12	69.62
15x15	SO52625-15-A15	79.51

Single Banjo

SO 52824



Size	Code	Price
4x1/8	SO52824-4-1/8	87.83
5x1/8	SO52824-5-1/8	87.83
6x1/8	SO52824-6-1/8	87.20
6x1/4	SO52824-6-1/4	91.29
8x1/8	SO52824-8-1/8	73.97
8x1/4	SO52824-8-1/4	102.49
10x1/4	SO52824-10-1/4	106.42
10x3/8	SO52824-10-3/8	135.37
12x3/8	SO52824-12-3/8	133.86
12x1/2	SO52824-12-1/2	167.56
14x1/2	SO52824-14-1/2	167.11
15x1/2	SO52824-15-1/2	164.62

Tee Union

SO 53021



Size	Code	Price
2	SO53021-2	58.51
3	SO53021-3	57.99
4	SO53021-4	60.44
5	SO53021-5	67.84
6	SO53021-6	53.59
8	SO53021-8	70.61
10	SO53021-10	84.35
12	SO53021-12	100.51
14	SO53021-14	133.60
15	SO53021-15	126.12

Reducing Tee Union

SO 53021 RED



Size	Code	Price
2x3x2	SO53021-2-3-2	65.42
2x3x3	SO53021-2-3-3	65.70
3x2x2	SO53021-3-2-2	65.42
3x5x3	SO53021-3-5-3	70.33
4x6x4	SO53021-4-6-4	54.86
5x3x3	SO53021-5-3-3	70.33
5x3x5	SO53021-5-3-5	69.10
5x5x3	SO53021-5-5-3	69.10
6x4x4	SO53021-6-4-4	54.86
6x4x6	SO53021-6-4-6	54.23
6x6x4	SO53021-6-6-4	54.23
6x8x6	SO53021-6-8-6	68.44
8x6x6	SO53021-8-6-6	68.44
8x6x8	SO53021-8-6-8	68.17
8x8x6	SO53021-8-8-6	68.17
8x10x8	SO53021-8-10-8	87.02
10x8x8	SO53021-10-8-8	87.02
10x8x10	SO53021-10-8-10	85.69
10x10x8	SO53021-10-10-8	85.69
10x12x10	SO53021-10-12-10	99.93
12x10x10	SO53021-12-10-10	99.93
12x10x12	SO53021-12-10-12	98.40
12x12x10	SO53021-12-12-10	98.40
12x15x12	SO53021-12-15-12	131.10
15x12x12	SO53021-15-12-12	131.10
15x12x15	SO53021-15-12-15	128.63
15x15x12	SO53021-15-15-12	128.63

Adjustable Tee Union

SO 53621 T



Size	Code	Price
6x4	SO53621-4-A6-4	48.88
6x5	SO53621-5-A6-5	48.88
6x6	SO53621-6-A6-6	47.63
6x6	SO53621-6-A8-6	58.58
8x8	SO53621-8-A8-8	57.48
10x8	SO53621-8-A10-8	71.90
10x10	SO53621-10-A10-10	68.58

Cross

SO 54021



Size	Code	Price
4	SO54021-4	84.51
5	SO54021-5	84.51
6	SO54021-6	82.11
8	SO54021-8	91.77
10	SO54021-10	138.49
12	SO54021-12	171.23
14	SO54021-14	208.09
15	SO54021-15	198.61

Taper Seat Non Return Valve

SO CV53B21 - FPM



Size	Code	Price
4	SOCV53B21-4-4	75.41
5	SOCV53B21-5-5	75.41
6	SOCV53B21-6-6	74.23
8	SOCV53B21-8-8	86.76
10	SOCV53B21-10-10	106.60
12	SOCV53B21-12-12	149.01

Regulating Valve

SO NV51A21 - PN10 - PTFE



Size	Code	Price
4	SONV51A21-4-4	147.48
5	SONV51A21-5-5	147.48
6	SONV51A21-6-6	161.28
8	SONV51A21-8-8	153.30
10	SONV51A21-10-10	179.42
12	SONV51A21-12-12	194.91

PFA Tubing - mm sizes

ID	OD	Wall	Code	Price (m)
4.00*	6.00	1.00	PFA4X6-25	
4.00**	6.00	1.00	PFA4X6-50	
6.00*	8.00	1.00	PFA6X8-25	
6.00**	8.00	1.00	PFA6X8-50	
8.00*	10.00	1.00	PFA8X10-25	on application
8.00**	10.00	1.00	PFA8X10-50	
10.00*	12.00	1.00	PFA10X12-25	
10.00**	12.00	1.00	PFA10X12-50	

PFA Tubing - inch sizes

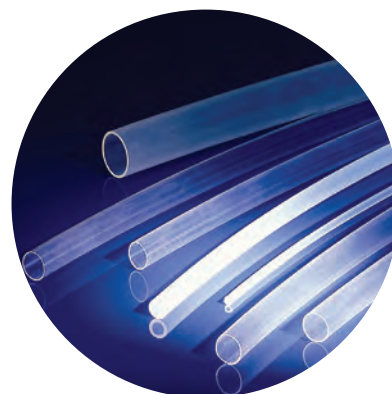
ID	OD	Wall	Code	Price (m)
1/4*	3/8	1/16	PFA002003-25	
1/4**	3/8	1/16	PFA002003-50	
3/8*	1/2	1/16	PFA003005-25	on application
3/8**	1/2	1/16	PFA003005-50	
5/8*	3/4	1/16	PFA058007-25	
5/8**	3/4	1/16	PFA058007-50	

* 25 mtr coil ** 50 mtr coil

PTFE Tubing

ID	OD	Wall	Code	Price (m)
2.00**	3.00	0.50	431.0050.000	
2.00***	4.00	1.00	431.0100.000	
4.00*	6.00	1.00	TFEBEC4025	
4.00**	6.00	1.00	TFEBEC4050	
4.00***	6.00	1.00	TFEBEC4100	
6.00*	8.00	1.00	PTFE6X8-25	
6.00**	8.00	1.00	PTFE6X8-50	on application
6.00***	8.00	1.00	PTFE6X8-100	
8.00*	10.00	1.00	TFECJC4025	
8.00**	10.00	1.00	TFECJC4050	
8.00***	10.00	1.00	TFECJC4100	
10.00*	12.00	1.00	TFEC4C4025	
10.00**	12.00	1.00	TFEC4C4050	
10.00***	12.00	1.00	TFEC4C4100	

* 25 mtr coil ** 50 mtr coil *** 100 mtr coil



Union Adaptor Female



Size	Code	Price
1/4x1/8	FMF42UAFN-1	
1/4x1/4	FMF44UAFN-1	
1/4x3/8	FMF46UAFN-1	
1/4x1/2	FMF48UAFN-1	
3/8x1/8	FMF62UAFN-1	
3/8x1/4	FMF64UAFN-1	
3/8x3/8	FMF66UAFN-1	
3/8x1/2	FMF68UAFN-1	
1/2x1/4	FMF84UAFN-1	on application
1/2x3/8	FMF86UAFN-1	
1/2x1/2	FMF88UAFN-1	
1/2x3/4	FMF812UAFN-1	
1/2x1	FMF816UAFN-1	
3/4x1/2	FMF128UAFN-1	
3/4x3/4	FMF1212UAFN-1	
3/4x1	FMF1216UAFN-1	
1x1/2	FMF168UAFN-1	
1x3/4	FMF1612UAFN-1	
1x1	FMF1616UAFN-1	

Union Adaptor Male



Size	Code	Price
1/4x1/8	FMF42UAMN-1	
1/4x1/4	FMF44UAMN-1	
1/4x3/8	FMF46UAMN-1	
1/4x1/2	FMF48UAMN-1	
1/4x3/4	FMF412UAMN-1	
3/8x1/8	FMF62UAMN-1	
3/8x1/4	FMF64UAMN-1	
3/8x3/8	FMF66UAMN-1	
3/8x1/2	FMF68UAMN-1	
3/8x3/4	FMF612UAMN-1	
3/8x1	FMF616UAMN-1	on application
1/2x1/8	FMF82UAMN-1	
1/2x1/4	FMF84UAMN-1	
1/2x3/8	FMF86UAMN-1	
1/2x1/2	FMF88UAMN-1	
3/4x1/2	FMF812UAMN-1	
3/4x3/4	FMF816UAMN-1	
3/4x1	FMF812UAMN-1	
1x1/2	FMF168UAMN-1	
1x3/4	FMF1612UAMN-1	
1x1	FMF1616UAMN-1	



Please note:

Fittings supplied with PVDF nuts as standard.

For PFA nuts replace suffix -1 with -3

Straight Union



Size	Code	Price
1/4	FMF4SUN-1	
3/8	FMF6SUN-1	on application
1/2	FMF8SUN-1	
3/4	FMF12SUN-1	
1	FMF16SUN-1	

Straight Union Reducer



Size	Code	Price
3/8x1/4	FMF64SURN-1	
1/2x1/4	FMF84SURN-1	
1/2x3/8	FMF86SURN-1	
3/4x1/4	FMF124SURN-1	on application
3/4x3/8	FMF126SURN-1	
3/4x1/2	FMF128SURN-1	
1x1/2	FMF168SURN-1	
1x3/4	FMF1612SURN-1	

Union Adaptor Male Panel



Size	Code	Price
1/4x1/8	FMF42UAMPN-1	
1/4x1/4	FMF44UAMPN-1	
3/8x3/8	FMF66UAMPN-1	
1/2x1/4	FMF84UAMPN-1	
1/2x3/8	FMF86UAMPN-1	on application
1/2x1/2	FMF88UAMPN-1	
3/4x1/2	FMF128UAMPN-1	
3/4x3/4	FMF1212UAMPN-1	
1x3/4	FMF1612UAMPN-1	
1x1	FMF1616UAMPN-1	

Elbow Adaptor Male



Size	Code	Price
1/4x1/8	FMF42EAMN-1	
1/4x1/4	FMF44EAMN-1	
1/4x3/8	FMF46EAMN-1	
1/4x1/2	FMF48EAMN-1	
3/8x1/8	FMF62EAMN-1	
3/8x1/4	FMF64EAMN-1	
3/8x3/8	FMF66EAMN-1	
3/8x1/2	FMF68EAMN-1	
3/8x3/4	FMF612EAMN-1	on application
1/2x1/4	FMF84EAMN-1	
1/2x3/8	FMF86EAMN-1	
1/2x1/2	FMF88EAMN-1	
1/2x3/4	FMF812EAMN-1	
3/4x1/2	FMF128EAMN-1	
3/4x3/4	FMF1212EAMN-1	
3/4x1	FMF1216EAMN-1	
1x3/4	FMF1612EAMN-1	
1x1	FMF1616EAMN-1	

Union Elbow



Size	Code	Price
1/4	FMF4UEN-1	
3/8	FMF6UEN-1	on application
1/2	FMF8UEN-1	
3/4	FMF12UEN-1	
1	FMF16UEN-1	

Elbow Adaptor Female



Size	Code	Price
1/4x1/8	FMF42EAFN-1	
1/4x1/4	FMF44EAFN-1	
3/8x1/4	FMF64EAFN-1	
3/8x3/8	FMF66EAFN-1	on application
3/8x1/2	FMF68EAFN-1	
1/2x1/4	FMF84EAFN-1	
1/2x3/8	FMF86EAFN-1	
1/2x1/2	FMF88EAFN-1	
1x1	FMF1616EAFN-1	

Union Elbow Female Flare



Size	Code	Price
3/8	FMF6FFUEN-1	
1/2	FMF8FFUEN-1	on application
3/4	FMF12FFUEN-1	
1	FMF16FFUEN-1	

Nut



Size	Code	Price
1/4	FMF4N-1	
3/8	FMF6N-1	on application
1/2	FMF8N-1	
3/4	FMF12N-1	
1	FMF16N-1	

Panel Nut

PVDF



Size	Code	Price
1/4	FMF4PN	
3/8	FMF6PN	on application
1/2	FMF8PN	
3/4	FMF12PN	
1	FMF16PN	

Union Tee



Size	Code	Price
1/4	FMF4UTN-1	
3/8	FMF6UTN-1	on application
1/2	FMF8UTN-1	
3/4	FMF12UTN-1	
1	FMF16UTN-1	

Union Tee Reducer



Size	Code	Price
3/8x3/8x1/4	FMF664UTRN-1	
3/8x3/8x1/2	FMF668UTRN-1	
3/8x3/8x3/4	FMF6612UTRN-1	
1/2x1/4x1/4	FMF844UTRN-1	
1/2x1/2x1/4	FMF884UTRN-1	
1/2x1/4x1/2	FMF848UTRN-1	
1/2x3/8x3/8	FMF866UTRN-1	on application
1/2x1/2x3/8	FMF886UTRN-1	
3/4x1/4x1/2	FMF1248UTRN-1	
3/4x1/2x1/2	FMF1288UTRN-1	
3/4x1/2x3/4	FMF12812UTRN-1	
3/4x3/4x1/4	FMF12124UTRN-1	
3/4x3/4x1/2	FMF12128UTRN-1	
1x1x1/2	FMF16168UTRN-1	
1x1x3/4	FMF161612UTRN-1	

Male Branch Tee



Size	Code	Price
1/4x1/4x1/8	FMF442MBTN-1	
1/4x1/4x1/4	FMF444MBTN-1	
3/8x3/8x1/8	FMF662MBTN-1	
3/8x3/8x1/4	FMF664MBTN-1	
3/8x3/8x3/8	FMF666MBTN-1	on application
1/2x1/2x1/4	FMF884MBTN-1	
1/2x1/2x3/8	FMF886MBTN-1	
1/2x1/2x1/2	FMF888MBTN-1	
3/4x3/4x1/4	FMF12124MBTN-1	
3/4x3/4x1/2	FMF12128MBTN-1	
3/4x3/4x3/4	FMF121212MBTN-1	
1x1x1/4	FMF16164MBTN-1	
1x1x1	FMF161616MBTN-1	

Tygon® fuel and lubricant tubing

TYGON® F-4040-A

Specially designed to handle most fuels and industrial lubricants, Tygon® F-4040-A resists the swelling and hardening caused by hydrocarbon-based fluids. This significantly reduces the risk of failure due to cracking and leakage. Its minimum extractability safeguards the liquid or vapour being transferred against adulteration.

Extremely flexible, Tygon® F-4040-A simplifies installation. It is translucent yellow for positive identification and to allow easy flow monitoring.

Features and benefits

- Compatible with most petroleum-based products
- Resists swelling and cracking
- Ozone and UV light resistant

Tygon F-4040

ID	OD	Wall	Code	Price (m)
2.03	3.56	0.77	T4003-C3	
2.40	4.80	1.20	T4003-D3	
3.20*	6.40	1.60	T4004-23	
4.80*	8.00	1.60	T4006-23	
6.40*	9.60	1.60	T4008-23	
8.00	11.20	1.60	T4010-23	on application
9.60*	12.70	1.60	T4012-23	
9.60	15.90	3.20	T4012-43	
11.10	14.30	1.60	T4014-23	
12.70	15.90	1.60	T4016-23	
12.70	19.10	3.20	T4016-43	
15.90	22.30	3.20	T4020-23	
19.00	25.40	3.20	T4024-43	

Coil Length 15 mtr

* Standard Stock



Tygon® laboratory tubing

TYGON® E-3603

Crystal clear and flexible, long-lasting and crack-resistant, new Tygon® E-3603 Non-DEHP Laboratory and Vacuum Tubing is now in a formulation that contains a non-DEHP plasticizer. Replacing DEHP with a globally accepted substitute eliminates concerns about potentially harmful health effects from repeated exposure to high levels of DEHP leachates.

Tygon® E-3603 Laboratory Tubing handles most inorganic chemicals found in the laboratory. It is non-oxidizing and non-contaminating, and less permeable than rubber tubing. The glassy-smooth inner bore helps prevent buildup to facilitate cleaning.

Features and benefits

- Remains Flexible to -43°C
- Outstanding chemical resistance
- Increases productivity in peristaltic pumps - outlasts other clear tubing 2 to 1

Tygon E-3603

ID	OD	Wall	Code	Price (m)
1.60*	3.20	0.80	ACF00002-C	3.53
1.60*	4.80	1.60	ACF00003-C	3.53
2.40	4.00	0.80	ACF00004-C	2.10
2.40*	5.60	1.60	ACF00005-C	4.42
3.20*	4.80	0.80	ACF00006-C	2.65
3.20*	6.40	1.60	ACF00007-C	5.28
4.00	5.60	0.80	ACF00009-C	3.14
4.00	7.20	1.60	ACF00010-C	5.96
4.80*	6.40	0.80	ACF00011-C	5.28
4.80*	8.00	1.60	ACF00012-C	7.47
4.80*	9.60	2.40	ACF00013-C	11.62
4.80	11.20	3.20	ACF00014-C	16.15
6.40	7.90	0.80	ACF00016-C	4.38
6.40	9.50	1.60	ACF00017-C	8.51
6.40	11.10	2.40	ACF00018-C	14.03
6.40	12.70	3.20	ACF00019-C	17.73

Coil Length 15 mtr

* Standard Stock



Versilic® tubing

Versilic®

62 Shore A Versilic® tubing is biologically neutral and does not inhibit cell culture. It stays flexible down to -50°C and maintains its chemical, mechanical and electrical performance up to +200°C, peak at 230°C.

It meets European Pharmacopoeia test requirements, USP Class VI biological tests, and ISO 10993 biocompatibility (systemic toxicity, irritation, cytotoxicity, hemolysis, sensitisation, Ames test). It meets FDA, European and French regulations regarding food contact. Versilic® may be used as a CE marked (Class 2A max.) non invasive medical device tubing for up to 29 days contact.

Tygon Versilic

ID	OD	Wall	Code	Price (m)
2.00	4.00	1.00	760160	1.55
3.00	5.00	1.00	760210	1.59
4.00	6.00	1.00	760320	2.10
5.00	8.00	1.50	760420	3.61
6.00	10.00	2.00	760510	5.63
8.00	12.00	2.00	760650	6.88
12.00	17.00	2.50	760880	11.97

Coil Length 15 mtr

Features and benefits

- Peroxide cured silicone
- Meets FDA, European and French regulations for food contact
- Temperature resistance: -50°C to +200°C



PVDF tubing

PVDF

PVDF tubes are an economic alternative to the other fluoroplastics because of their low specific weight. PVDF tubing is safe and non-toxic. PVDF tubes are resistant to most inorganic chemicals such as acids and salts - even at elevated temperatures or when highly concentrated. PVDF tubing has an excellent resistance to aliphatic and aromatic hydrocarbons, organic acids, alcohols and aromatic compounds. The permeation values of PVDF are low.

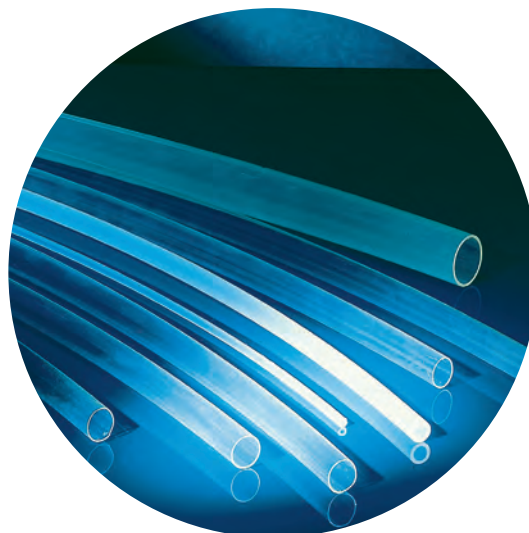
Product Facts and Data at a Glance

- Favourable price/performance ratio
- Favourable resistance to chemicals
- Fusibility
- High rigidity
- Stable at temperatures between -50°C and 140°C
- Long factory lengths possible
- Low permeation

PVDF

ID	OD	Wall	Code	Price (m)
4.00*	6.00	1.00	PVDF4X6-25	3.56
4.00**	6.00	1.00	PVDF4X6-50	3.56
6.00*	8.00	1.00	PVDF6X8-25	4.75
6.00**	8.00	1.00	PVDF6X8-50	4.75
8.00*	10.00	1.00	PVDF8X10-25	4.90
8.00**	10.00	1.00	PVDF8X10-50	4.90
10.00*	12.00	1.00	PVDF10X12-25	8.50
10.00**	12.00	1.00	PVDF10X12-50	8.50

* 25 mtr coil ** 50 mtr coil



PFA tubing

PFA

PFA is an outstanding fluoroplastic with the best temperature stability of all meltable fluoroplastics. Our PFA tubing is distinguished by its excellent chemical and physical properties largely identical with those of PTFE. The essential differences in comparison with PTFE are low cold flow, improved mechanical properties, reduced permeation and improved light transmittance. Welding is possible as with all melt processable fluoroplastics, because PFA enters the phase of liquefaction at approximately 310°C.

Product Facts and Data at a Glance

- Temperatures stability from -70°C to +260°C
- Excellent resistance to pressure
- Large factory lengths possible
- Very narrow tolerances on request
- Also available in cut-to-length sections
- Customized sizes - tooling costs not charged in most case

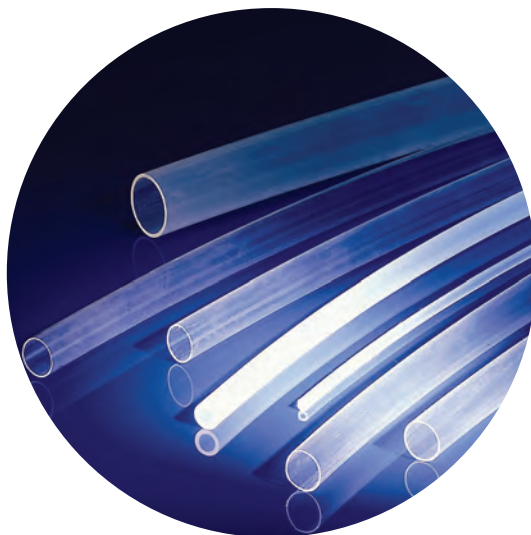
PFA - mm sizes

ID	OD	Wall	Code	Price (m)
4.00*	6.00	1.00	PFA4X6-25	7.31
4.00**	6.00	1.00	PFA4X6-50	7.31
6.00*	8.00	1.00	PFA6X8-25	8.87
6.00**	8.00	1.00	PFA6X8-50	8.87
8.00*	10.00	1.00	PFA8X10-25	10.53
8.00**	10.00	1.00	PFA8X10-50	10.53
10.00*	12.00	1.00	PFA10X12-25	12.72
10.00**	12.00	1.00	PFA10X12-50	12.72

PFA - inch sizes

ID	OD	Wall	Code	Price (m)
¼*	¾	⅛	PFA002003-25	13.58
¼**	¾	⅛	PFA002003-50	13.58
⅜*	1½	⅛	PFA003005-25	17.12
⅜**	1½	⅛	PFA003005-50	17.12
½*	¾	⅛	PFA058007-25	24.49
½**	¾	⅛	PFA058007-50	24.49

* 25 mtr coil ** 50 mtr coil



PTFE tubing

PTFE

PTFE (polytetrafluoroethylene) has excellent antifriction properties in connection with high temperature stability of up to +260°C and wide resistance to aggressive liquids, have made PTFE well known in recent years. Our PTFE tubes are put to use in many different fields of application. Due to these various uses, our tubes are subject not only to the DIN EN ISO standard 9001 introduced in 1997, but also to many other standards for a variety of requirements, such as the UL approval, MIL, AMS, ASTM, DIN and the biocompatibility test.

PTFE

ID	OD	Wall	Code	Price (m)
2.00**	3.00	0.50	431.0050.000	3.72
2.00***	4.00	1.00	431.0100.000	6.02
4.00*	6.00	1.00	TFEBEC4025	4.25
4.00**	6.00	1.00	TFEBEC4050	4.25
4.00***	6.00	1.00	TFEBEC4100	4.25
6.00*	8.00	1.00	PTFE6X8-25	6.16
6.00**	8.00	1.00	PTFE6X8-50	6.16
6.00***	8.00	1.00	PTFE6X8-100	6.16
8.00*	10.00	1.00	TFECJC4025	7.92
8.00**	10.00	1.00	TFECJC4050	7.92
8.00***	10.00	1.00	TFECJC4100	7.92
10.00*	12.00	1.00	TFEC4C4025	9.14
10.00**	12.00	1.00	TFEC4C4050	9.14
10.00***	12.00	1.00	TFEC4C4100	9.14

* 25 mtr coil ** 50 mtr coil *** 100 mtr coil



Valves

Saint Gobain Performance Plastics comprehensive range of Furon valves benefit from State of the art, patent protected technology. The newest generation of Furon valves are constructed from high purity, injection moulded flouropolymers including high purity PFA.

Innovative designs and construction ensure optimal systems performance, media purity, and maintenance free operation.

The range of valves available are shown below.



Furon® UPM 1000 Valve



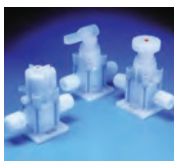
- 2-way and 3-way high purity PFA valves
- Pneumatic, Manual Quarter Turn, and Manual Multi-turn
- 1/4" 1/2" 3/4" Orifice

Furon® HPV High Performance Diaphragm Valve



- 2-way and 3-way high purity PFA valves
- Pneumatic, Manual Quarter Turn, and Manual Multi-turn
- 1/4" Orifice

Furon® CDV-1000 Compact Diaphragm Valve



- 2-way and 3-way high purity PFA & PTFE valves
- Pneumatic and Manual Multi-turn
- 1/2" Orifice

Furon® J-Series Valve



- 2-way high purity PFA chemical distribution valves
- Pneumatic, Manual Toggle, and Manual Multi-turn
- 3/4" Orifice

Furon® RDVM and SMDVM Self-Manifolding Distribution Valve



- 2-way high purity PFA chemical distribution valves
- Pneumatic, Manual Quarter Turn, and Manual Multi-turn
- 1/4" Orifice

Furon® MCVM Mini & LCVM Large Check Molded Valve

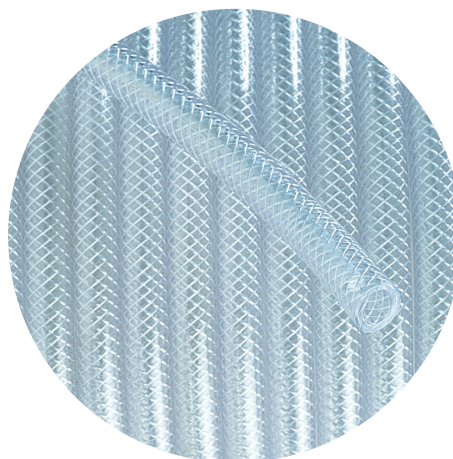


- one way media actuated high purity valve
- High purity PFA and PTFE construction
- Metal-free design

PVC Flexible Tube Braid Re-inforced

30 mtr coil

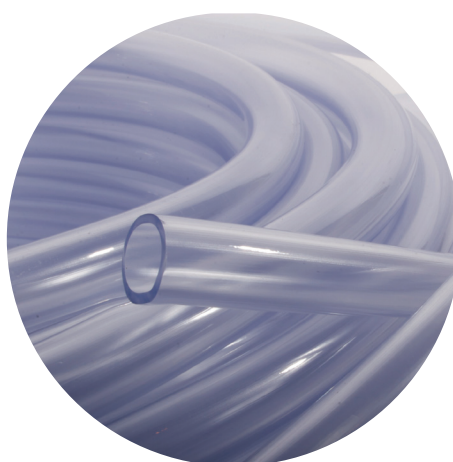
Size (mm)	I.D.	O.D.	Bend Radius* (mm)	Code	Price
3/8	10	15	40	PVC003FLEXR	on application
1/2	12.5	18.5	55	PVC005FLEXR	
3/4	19	26	135	PVC007FLEXR	
1	25	33	210	PVC010FLEXR	
1 1/4	32	42	320	PVC012FLEXR	
1 1/2	40	49	420	PVC015FLEXR	
2	50	62	650	PVC020FLEXR	



PVC Flexible Tube Un-reinforced

30 mtr coil

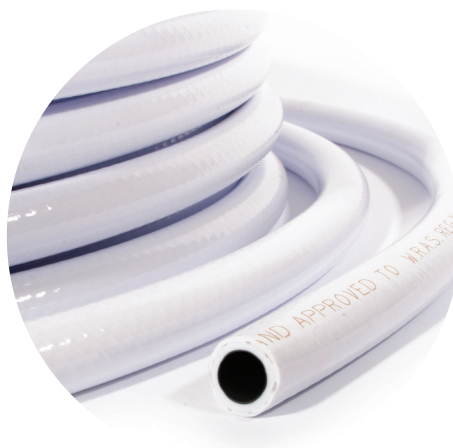
Size (mm)	I.D.	O.D.	Bend Radius* (mm)	Code	Price
3/8	10	16	144	PCV003FLEX	on application
1/2	12	18	162	PVC005FLEX	
3/4	19	25	225	PVC007FLEX	
1	25	31	279	PVC010FLEX	



Codeflex Hydrachem Hose

30 mtr coil

Size (mm)	I.D.	O.D.	Bend Radius* (mm)	Code	Price
6	6.3	12	72	EVC06	16.25
10	10	16	96	EVC10	19.49
12	12.5	18.5	111	EVC1206	21.26
19	19	26	156	EVC19	25.33
25	25	33	264	EVC2501	26.79
32	31.5	41	328	EVC32	38.39
38	38	48.5	388	EVC38	46.36
50	50	62	496	EVC50	100.71

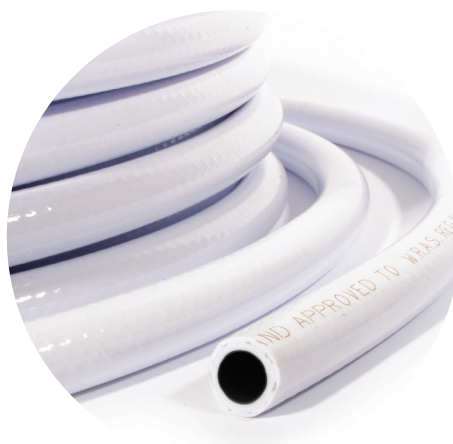


Codeflex Aquachem Hose

30 mtr coil

Size (mm)	I.D.	O.D.	Bend Radius* (mm)	Code	Price
6	6.3	12	30	PRH06	16.25
10	10	16	40	PRH10	19.49
12	12.5	19	55	PRH12	23.13
19	19	26	135	PRH19	25.33
25	25	33	210	PRH25	28.34
32	31.5	41	246	PRH32	38.39
38	38	48.5	291	PRH38	46.36
50	50	62	372	PRH50	74.27

* Bend radius to be used as a guide only



Jubilee Clips

Mild steel, zinc plated

Tube Size

Min	Max	BS No.	Code	Price (m)
9.50	12.00	12	OOOMS	0.57
13.00	20.00	20	OOMS	0.60
16.00	22.00	22	OMS	0.63
18.00	25.00	25	OXMS	0.68
22.00	30.00	30	1AMS	0.71
25.00	35.00	35	1MS	0.75
30.00	40.00	40	1XMS	0.77
32.00	45.00	45	1MMS	0.78
35.00	50.00	50	2AMS	0.83
40.00	55.00	55	2MS	0.87
45.00	60.00	60	2XMS	0.91
55.00	70.00	70	3MS	1.00
60.00	80.00	80	3XMS	1.09
70.00	90.00	90	4MS	1.13



Polypropylene

Elbow 90°

Male BSP Thread x
Hose Insert



Size	Code	Price
3/8x12	1413-003012	3.96
1/2x12	1413-005012	4.08
1/2x16	1413-005016	4.52
1/2x20	1413-005020	5.01
3/4x12	1413-007012	4.17
3/4x20	1413-007020	4.86
3/4x25	1413-007025	5.78
1x20	1413-010020	6.70
1x25	1413-010025	5.78
1x32	1413-010032	7.46
1.1/4x32	1413-012032	7.81
1.1/2x40	1413-015040	10.03
2x51	1413-050051	12.56

Male Adaptor

Male BSP Thread x
Hose Insert



Size	Code	Price
1/4x7	1436-002007	1.91
1/4x12	1436-002012	2.08
3/8x10	1436-003010	2.08
3/8x12	1436-003012	2.11
3/8x16	1436-003016	2.63
1/2x13	1436-005013	2.37
1/2x16	1436-005016	2.63
1/2x20	1436-005020	2.71
3/4x10	1436-007010	2.63
3/4x13	1436-007013	2.82
3/4x16	1436-007016	2.63
3/4x20	1436-007020	2.82
3/4x25	1436-007025	3.18
1x20	1436-010020	3.29
1x25	1436-010025	3.62
1x32	1436-010032	4.86
1.1/4x20	1436-012020	7.35
1.1/4x25	1436-012025	5.10
1.1/4x32	1436-012032	6.43
1.1/4x40	1436-012040	7.91
1.1/2x38	1436-015038	8.39
1.1/2x50	1436-015050	8.98
2x50	1436-020050	10.20
3x75	1436-030075	19.55
4x100	1436-040100	22.06

Elbow 90°

Female BSP Threaded
Nut & Seal x Hose Insert



Size	Code	Price
1/2x12	1407-005012	6.35
3/4x20	1407-007020	7.60
1x25	1407-010025	8.85
1.1/4x32	1407-012032	11.11
1.1/2x40	1407-015038	16.19
2x50	1407-020050	20.24

Female Adaptor

Hose Spigot x Female
BSP Thread



Size	Code	Price
3/8x10	1435-003010	3.75
1/2x13	1435-005013	4.33
3/4x13	1435-007013	4.52
3/4x20	1435-007020	4.86
1x20	1435-010020	4.86
1x25	1435-010025	5.33
1.1/4x25	1435-012025	5.45
1.1/4x32	1435-012032	7.01
1.1/2x40	1435-015040	9.61
2x50	1435-020050	12.68
3x75	1435-030076	29.20
4x100	1435-040100	40.04