

Grease separator *EasyClean* ground Standard NS 1 – 4 for underground installation

Made of polyethylene

Installation

- Resistant when installed in the groundwater up to 500 mm
- A load distribution plate must be provided for class D

Consisting of:

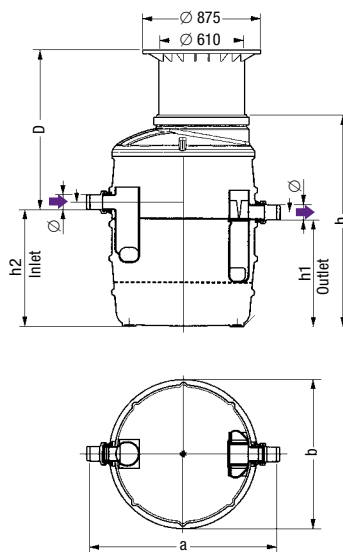
Upper section made of polymer, infinite height and level adjustment, with cover class A/B, D in accordance with EN 124 made of cast iron, sealed odour-tight, incl. lift-out key

Delivery: System completely assembled

Note: Further nominal sizes on request

➤ **Accessories:** Sampling chamber, extension section, direct disposal, *SonicControl* (NS 2 and NS 4) page 341 – 344; pumping stations see chapter "3"

➤ **Technical note** page 340



Underground installation frost-free depth 800 mm

NS	Installation depth D in mm	Art. no.
Cover class A/B		
NS 1	550 – 950	93 001/80B
NS 2	550 – 950	93 002/80B
NS 4	550 – 950	93 004/80B
Cover class D		
NS 1	550 – 950	93 001/80D
NS 2	550 – 950	93 002/80D
NS 4	550 – 950	93 004/80D

Underground installation frost-free depth 1200 mm

NS	Installation depth D in mm	Art. no.
Cover class A/B		
NS 1	800 – 1200	93 001/120B
NS 2	800 – 1200	93 002/120B
NS 4	800 – 1200	93 004/120B
Cover class D		
NS 1	800 – 1200	93 001/120D
NS 2	800 – 1200	93 002/120D
NS 4	800 – 1200	93 004/120D

NS	Ø	a	b	h ¹⁾	h1	h2	Weight	Sludge trap	Water and sludge	Grease storage
1	110	1380	1106	1050	540	610	111 kg	140 l	230 l	70 l
2	110	1380	1106	1300	790	860	120 kg	200 l	370 l	120 l
4	110	1380	1106	1550	1040	1110	130 kg	400 l	370 l	160 l

¹⁾ Specifications apply for type 80. For type 120, h* = h + 250 mm.

Ø = Outer diameter

D = Installation depth