

## Cone check valve S4



Symbol photo



Diese Druckschrift enthält keine Gewährleistungszusagen, sondern will lediglich eine erste Information vermitteln. Das Programm wird ständig erweitert, daher entsprechen die Ausführungen und Typen dem Stand bei Drucklegung.  
Technische Änderungen vorbehalten!

### General:

- Material: PVC-U / PP / PVDF
- Sealing material: EPDM / FPM
- Spring: WST 1.4401  
PTFE beschichtet
- Dimensions: DN10 – DN80  
d16 – d110  
3/8" – 4"

### Connector types:

#### PVC

- Solvent socket DIN / ASTM / JIS
- Solvent spigot DIN
- Threaded socket BSP
- PE fusion socket DIN
- PE fusion spigot DIN
- Fixed flange DIN / ANSI / JIS
- Backing flange DIN  
(on request)

#### PP

- Fusion socket DIN
- Fusion spigot DIN
- Threaded socket BSP

#### PVC

- Fusion socket DIN
- Fusion spigot DIN
- Threaded socket BSP

Further Connector types on request

### Operating pressure:

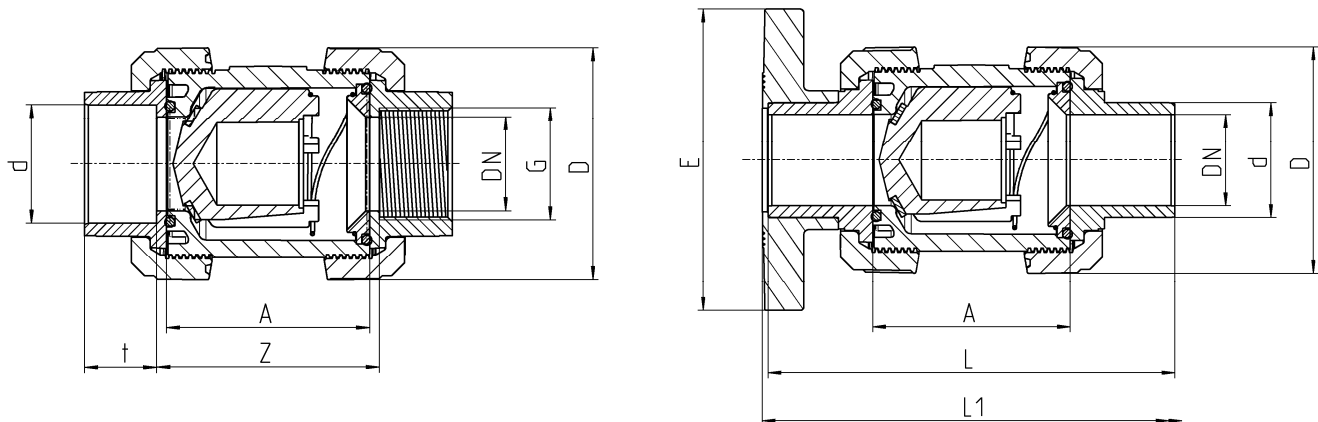
DN10 d16 3/8" – DN50 d63 d2"	PN16/10
DN65 d75 d2 1/2"	PN16/8
DN80 d90 3"	PN10/6
DN80 d110 4"	PN6

### Technical features:

- Corrosion resistant
- Maintenance free operation over a long working life
- Easy of servicing
- Radial installation or removal
- Quick and exact closing and opening
- Opening pressure 0,06 bar

# Cone check valve S4

## Dimensions:



## PVC-U

### Connector types

PVC solvent socket / solvent spigot / threaded socket

PVC fixed flange

PE fusion socket / fusion spigot

DN	10	15	20	25	32	40	50	65	80	80
d	16	20	25	32	40	50	63	75	90	110
<b>G</b> <sup>1</sup> TSO	3/8"	1/2"	3/4"	1"	1 1/4"	1 1/2"	2"	2 1/2"	3"	-
<b>A</b>	62	62	70	74	84	95	109	137	163	163
<b>D</b>	53	53	63	70	85	101	124,5	155	188	188
<b>t</b> <sup>2</sup> SSP	16,5	16,5	19,5	22,5	26,5	31,5	38,5	45	55,5	64
<b>t</b> <sup>4</sup> FSO <sup>5</sup> PE	14,5	16	17	19,5	22	25	29	34,5	37,5	41,5
<b>E</b> <sup>6</sup> FF	-	97	105	125	140	150	165	185	200	229
<b>L</b> <sup>4</sup> SSP	115	125	145	154	174	194	223	287	300	341
<b>L</b> <sup>5</sup> FSP <sup>6</sup> PE	112	123	143	151	142	180	197	253	293	323
<b>L1</b> <sup>6</sup> FF	120	130	150	160	180	200	230	290	310	350
<b>Z</b> <sup>2</sup> SSO	68	67	76	80	81	103	120	148	180	173
<b>Z</b> <sup>1</sup> TSO	67	67	77	81	90	104	120	150	185	-
<b>Z</b> <sup>3</sup> FSO <sup>5</sup> PE	71	68	80	79	98	115	137	165	210	210
<b>PN</b>	16	16	16	16	16	16	16	16	10	6

Dimensions in mm

<sup>1</sup> TSO = threaded socket

<sup>2</sup> SSO = solvent socket

<sup>3</sup> SSP = solvent spigot

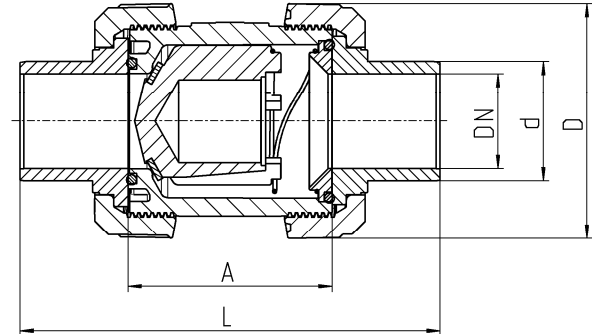
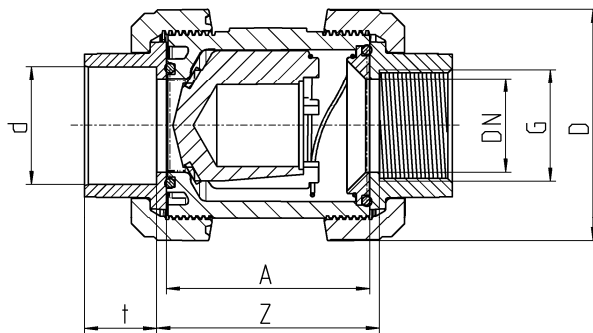
<sup>4</sup> FSO = fusion socket

<sup>5</sup> FSP = fusion spigot

<sup>6</sup> FF = fixed flange

- = not realised

# Cone check valve S4



## PP

### Connector types

PP fusion socket / fusion spigot / threaded socket

PE fusion socket / fusion spigot

DN	10	15	20	25	32	40	50	65	80	80
d	16	20	25	32	40	50	63	75	90	110
<b>G</b> <sup>1</sup> TSO	3/8"	1/2"	3/4"	1"	1 1/4"	1 1/2"	2"	2 1/2"	3"	-
<b>A</b>	62	62	69	73	83	94	108	133	160	160
<b>D</b>	53	53	64	71	84,5	100	120,5	155	187	187
<b>t</b> <sup>2</sup> FSO PP	14,5	16	17,5	19,5	22	25,5	29	34,5	38,5	42
<b>t</b> <sup>2</sup> FSO PE	14,5	16	17	19,5	22	25	29	34,5	37,5	41,5
<b>L</b> <sup>3</sup> FSP PP	114	124	143	152	171	191	220	277	295	312
<b>L</b> <sup>3</sup> FSP PE	112	123	142	150	141	179	196	249	290	320
<b>Z</b> <sup>1</sup> TSO	67	67	74	80	89	103	119	143	180	-
<b>Z</b> <sup>2</sup> FSO PP	71	68	78	84	97	113	136	162	211	211
<b>Z</b> <sup>2</sup> FSO PE	71	68	79	84	97	114	136	161	207	207
<b>PN</b>	10	10	10	10	10	10	10	8	6	6

Dimensions in mm

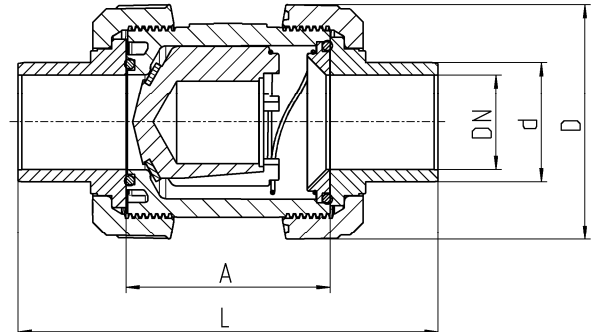
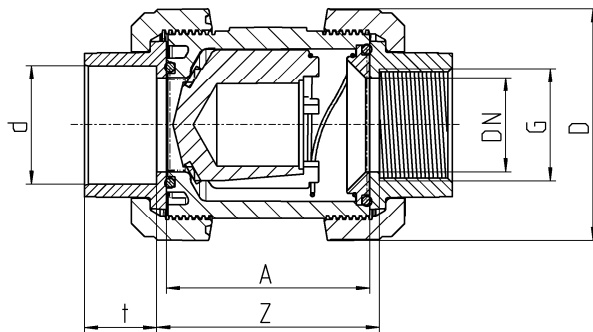
<sup>1</sup> TSO = threaded socket

<sup>2</sup> FSO = fusion socket

<sup>3</sup> FSP = fusion spigot

- = not realised

# Cone check valve S4



## PVDF

### Connector types

PVDF fusion socket / fusion spigot / threaded socket

DN	10	15	20	25	32	40	50	65	80	80
d	16	20	25	32	40	50	63	75	90	110
<b>G</b> <sup>1</sup> TSO	3/8"	1/2"	3/4"	1"	1 1/4"	1 1/2"	2"	2 1/2"	3"	-
<b>A</b>	62	62	69	73	83	94	108	133	160	160
<b>D</b>	52,5	52,5	63	70	83	98,5	118	151	183	183
<b>t</b> <sup>2</sup> FSO	14,5	16	17,5	19,5	22	25,5	29	34,5	38,5	41,5
<b>L</b> <sup>3</sup> FSP	114	125	143	152	171	191	220	297	295	320
<b>Z</b> <sup>1</sup> TSO	67	67	74	80	89	103	119	143	180	-
<b>Z</b> <sup>2</sup> FSO	71	68	78	84	97	113	136	162	207	213
<b>PN</b>	16	16	16	16	16	16	16	16	10	6

Dimensions in mm

<sup>1</sup> TSO = threaded socket

<sup>2</sup> FSO = fusion socket

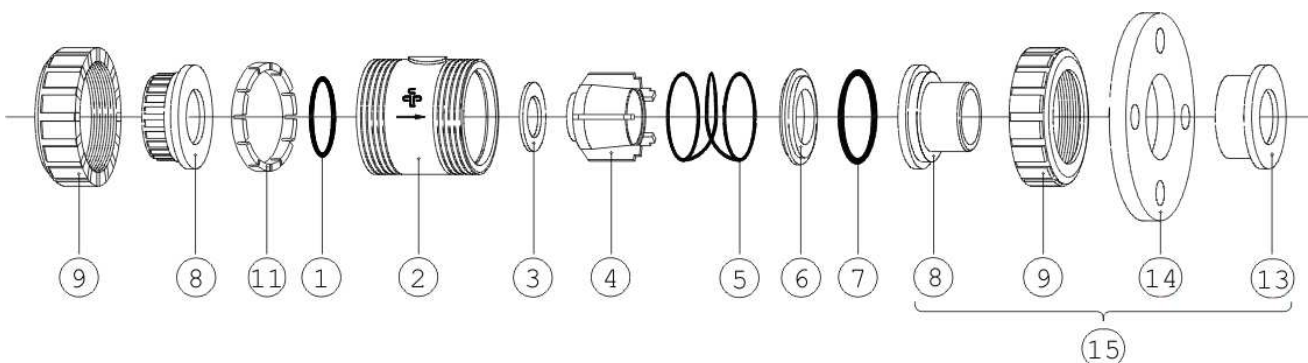
<sup>3</sup> FSP = fusion spigot

- = currently not realised

## Cone check valve S4

### Exploded drawing:

01. O-Ring
02. Body
03. Flat gasket
04. Cone
05. Spring (PTFE (Teflon®) coated or WST 1.4401)
06. Thrust collar
07. O-Ring
08. Connector types  
Solvent socket / -spigot  
Fusion socket / -spigot  
Threaded socket
09. Union nut
11. Screen (only PP and PVDF)
13. Flange adapter / stub flange
14. Backing flange / fixed flange
15. Connection set



### Diagrams:

#### Pressure loss diagram

