

Grease separator *EasyClean Modular* Standard and Direct NS 1 – 4

for free-standing installation, three component version



Made of polyethylene PE-HD

Installation: In frost-protected rooms

Version: Standard or with direct disposal
(only *EasyClean Modular Direct*)

Consisting of: Integrated sludge trap,
polyethylene quick release odour tight covers

Delivery: System completely assembled.
Screw connection can be undone to minimum
installation dimensions.

Installation:

Ideal where access is extremely narrow.

Separator can be disassembled into 3 parts for
installation opening of max. 58 cm.

**Further nominal sizes, models with disposal device
and on-site welding on request:** info@kessel.com

***Custom made product:** Delivery time on request

➤ **Accessories:** Sampling chamber, *SonicControl*,
refill inlet, from page 331 – 334;
lifting stations see chapter "3"



EasyClean Modular Standard

NS	Art. no.
NS 1	93 001-R2*
NS 2	93 002-R2*
NS 3	93 003-R2*
NS 4	93 004-R2*

EasyClean Modular Direct with direct disposal

NS	Art. no.
NS 1	93 001.00/D1-R2*
NS 2	93 002.00/D1-R2*
NS 3	93 003.00/D1-R2*
NS 4	93 004.00/D1-R2*

*Custom made

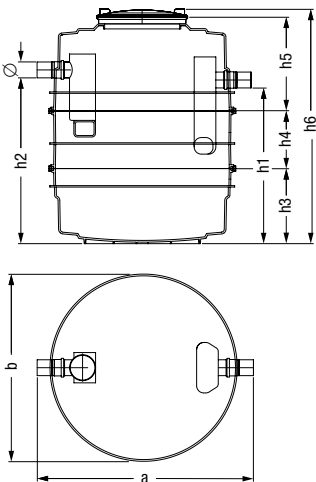


Illustration shows Standard version

Technical note for pages 316 – 330

Production and weather related influences can lead to deviations from our specifications in the case of free-standing separators.
For this reason, please check the height specifications in particular for their actual size before installation. Please adapt the pipework to the actual inlet and outlet dimensions before installing the grease separator. Thermal and mechanical influences must be taken into consideration.

NS	Ø	a	b	h1	h2	h3	h4	h5	h6	Weight	Sludge trap	Water and sludge	Grease storage
1	110	1120	1020	780	850	375	250	500	1236	80 kg	100 l	230 l	80 l
2	110	1120	1020	1020	1090	485	300	550	1386	80 kg	200 l	270 l	100 l
3	110	1120	1020	1020	1090	485	300	550	1386	130 kg	300 l	300 l	120 l
4	110	1500	1300	1080	1150	520	390	580	1550	130 kg	400 l	560 l	160 l

Following approval no. Z-54.1-473

Ø = Outer diameter