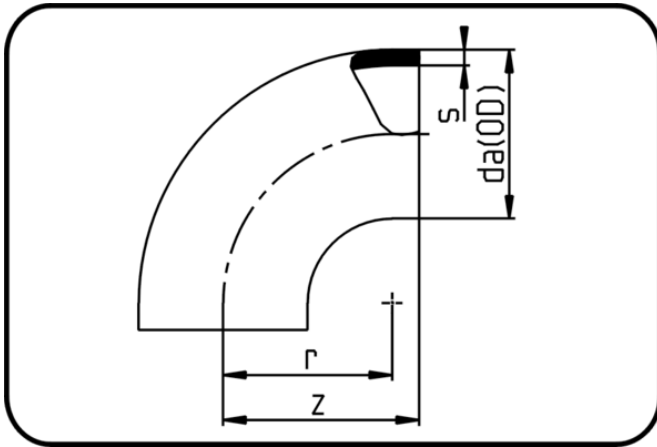


Fittings



Code: 001

- Bend 90°
- short spigot
- injection moulded
- Butt + IR-welding
- PP Pure grey

| Dimension | Code | Detail | da(OD) mm | s mm | z mm | r mm | Weight |
|-----------|----------------|------------------------|--------------|---------|---------|---------|--------|
| 250 | 72.001.0250.11 | 250X22,7 SDR11 ISO S-5 | 250 | 22,7 | 290 | 265 | 7.35 |
| 280 | 72.001.0280.11 | 280X25,4 SDR11 ISO S-5 | 280 | 25,4 | 290 | 265 | 8.84 |
| 315 | 72.001.0315.11 | 315X28,6 SDR11 ISO S-5 | 315 | 28,6 | 340 | 300 | 13.42 |