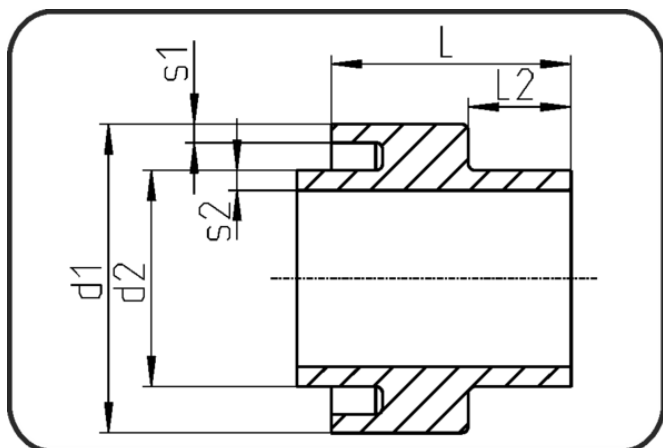


## PPR Poly-Flo



Code: 197

- **Poly-Flo Dog Bone**
- with transition to single tube
- machined
- **simultaneous + cascade welding**
- **PPR grey**

Dimension	Code	Detail	d1 mm	d2 mm	s1 mm	s2 mm	L mm	L2 mm	Weight
50/32	11.197.5032.71	50/32 SDR17/11	50	32	3	3	55	25	0.042
90/63	11.197.9063.71	90/63 SDR17/11	90	63	5,4	5,8	70	30	0.185
160/110	11.197.1611.71	160/110 SDR17/11	160	110	9,5	10	105	55	0.805