

# The grease separator

for your kitchen with small quantities of wastewater  
or a requirement for multiple small separators.

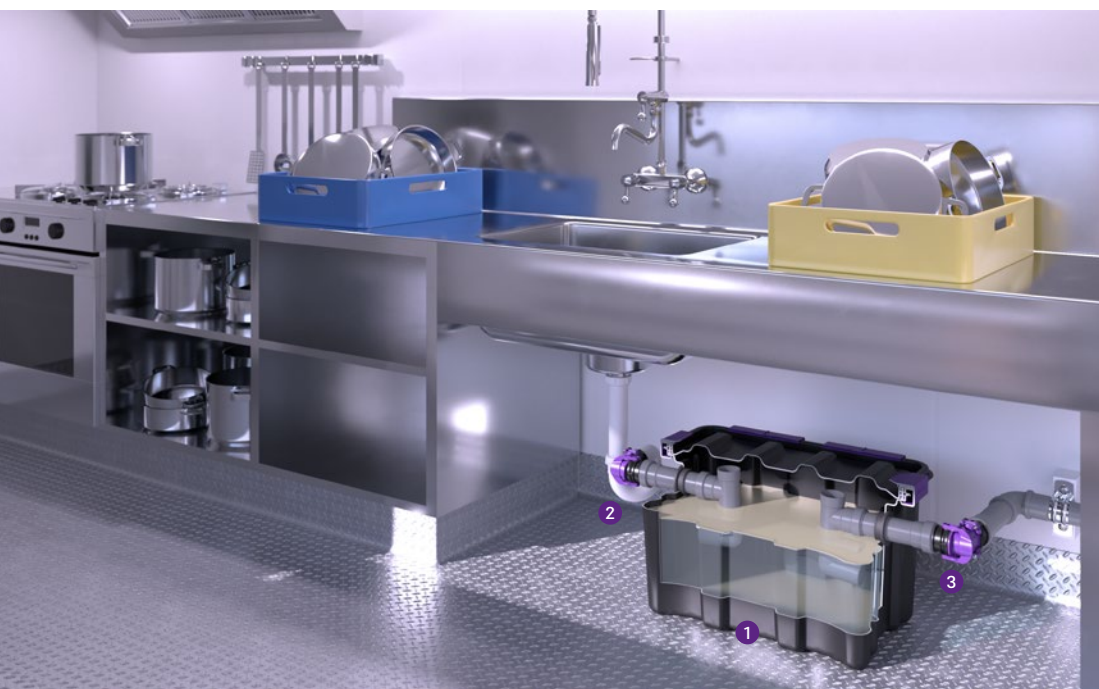


## Grease separators

# *EasyClean free UnderSink*

In the food truck, in the takeaway restaurant, in the shopping centre or in a small club: Installation of large central grease separators is not possible everywhere. If this is the case, and only small volumes of wastewater are produced, then it's a clear case for the *EasyClean free UnderSink* grease separator – optimised for free-standing set-up where space is limited.

Its low weight and compact size enable easy handling. Thanks to its 360° rotatable and vertically adjustable swivel connection, the tank is particularly convenient to remove. The *EasyClean free UnderSink* grease separator has been tested on the test bench with 0.7 l/s and is therefore ideally suitable for the wastewater discharge from a sink – efficient at a favourable price in TÜV-tested quality.



1 Grease separators    2 Inlet    3 Outlet

**100 % corrosion-free**

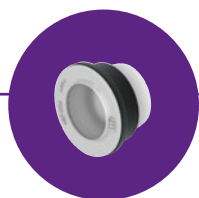
The *EasyClean free UnderSink* is 100 % made of polymer. That makes it resistant to aggressive wastewater and particularly durable.

**100 % waterproof and odour-tight**

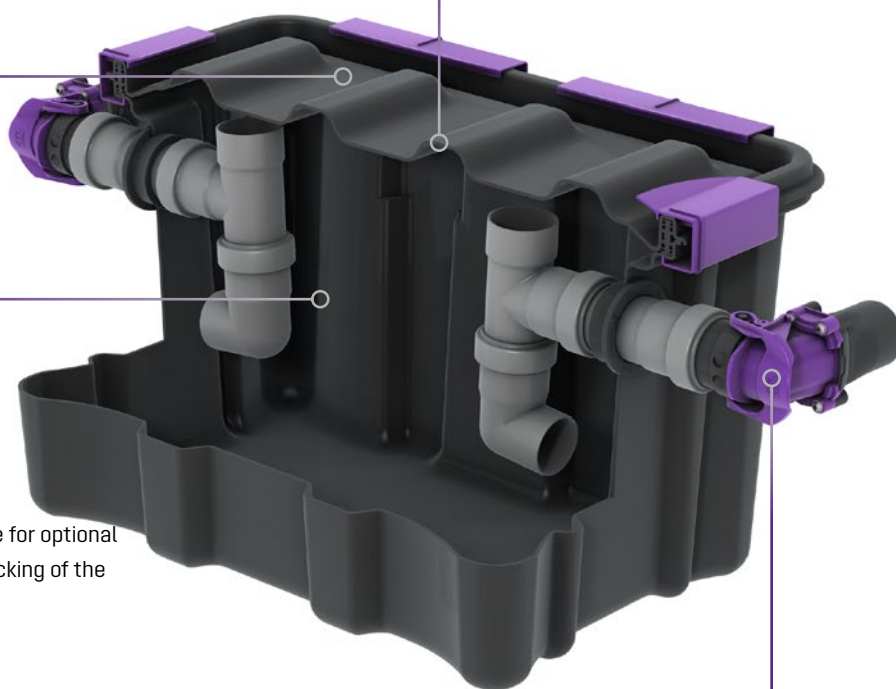
The tank of the *EasyClean free UnderSink* grease separator is water and odour-tight. We vouch for this with our KESSEL guarantee: In addition to the statutory provision, we provide a 20-year warranty on the leak tightness, fitness for purpose and structural stability of tank.

**Inspection window**

An inspection window is available for optional installation on site for visual checking of the grease layer thickness.

**Tool-free installation**

KESSEL makes the installation particularly easy for you: You do not need any tools to install the *EasyClean free UnderSink* grease separator – which also applies to the disposal.



EasyClean free UnderSink grease separator, NS 0.7  
for free-standing installation



The separator for greasy wastewater is suitable for free-standing set-up in frost-protected rooms below a sink and is manufactured without the need for metallic components in the tank. The collecting tank made of permanently resistant polymer (PP) is equipped with an integrated sludge trap. An odour-tight cover with all-round seal and clip closures makes easy access possible for cleaning and maintenance work. For easy removal, the separator has a quick-release connection to the pipe.

An inspection window for optional installation on site is available for visual checking of the grease layer thickness.

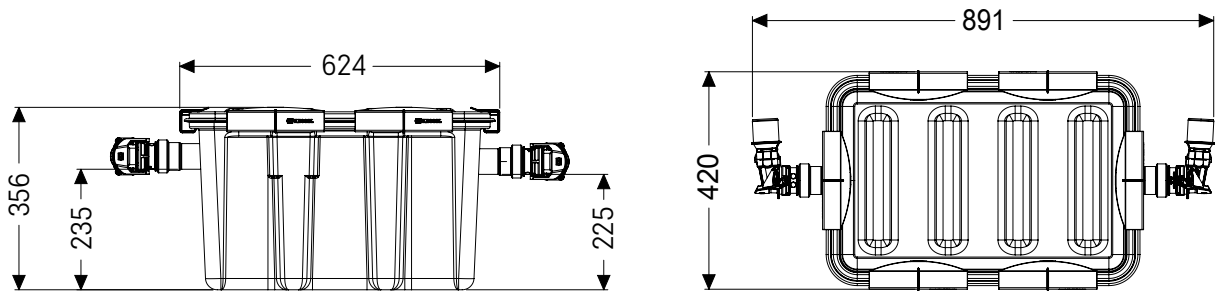
**Material:** PP

**Delivery:** Modular kit for assembly on site

**Type of disposal:** manual



NS	Art. no.
0.7	913 110



h1	h2	Inlet/drain	Outer diameter Ø (mm)	Installation dimension l × b (mm)	Weight (kg)	Sludge trap (l)	Water and grease (l)	Grease storage (l)	Total (l)
225	235	50	50	891 × 420	5	12	21	8	33

Accessories

Inspection window

Inspection window

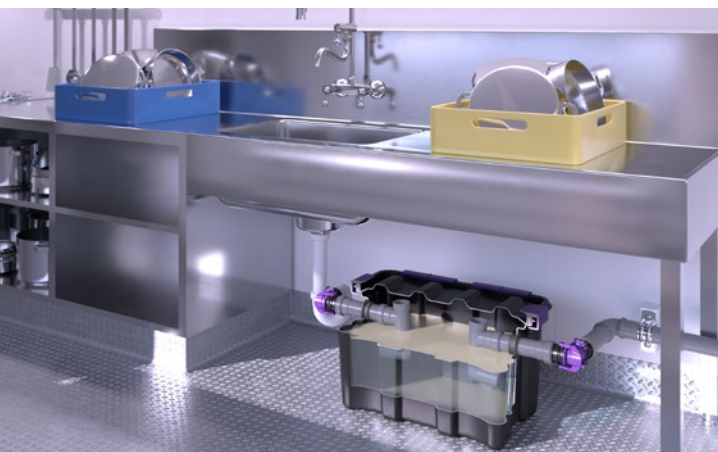
**Compatibility:** For grease separators *EasyClean free UnderSink* for free-standing installation  
**Inclusive:** High-gloss polished inspection glass  
**Note:** Installation in drillhole on site, use hole saw with DA60



Art. no.
913 110

## Grease separators *EasyClean free / ground*

The versatile solution for free-standing installation



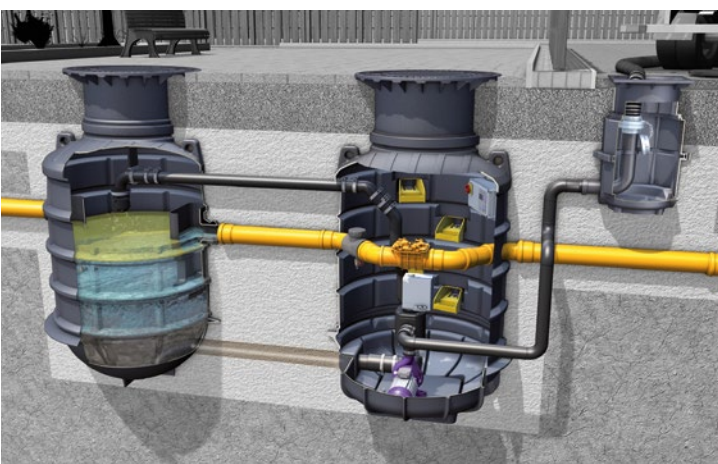
*EasyClean free UnderSink for kitchens*

The KESSEL grease separator *EasyClean free* combines ease of installation, cleaning performance and energy efficiency. The narrow tank shape offers two advantages: 1) the complete technology can be integrated on the base area of the separator. 2) easier to transport the grease separator through narrow entranceways and set it up directly against the wall, saving a great deal of space.

Underground installation outside the building is a space saving alternative to indoor installed separators. Here, we offer a wide range of grease separators with the *EasyClean ground* that combines the advantages of the *EasyClean free* with more usable operating space.



*EasyClean free for free stranding installation for basements*



*EasyClean ground for underground installations*

### Grease separators

For further information about our grease separators have a look in our cataloguechapter 5.1.





# This is KESSEL.

Since 1963, KESSEL has stood like no other company for innovative and reliable drainage technology. We have established ourselves as the impulse generator in the industry and are now a worldwide premium supplier.



Competent partner  
**since 1963**



International player  
**60+  
countries**



Innovative premium supplier  
**3.000+  
products**



Safe employer  
**550+  
employees**



Sustainable company  
**100+ mio. €  
in sales**

During the production of our products as well as their operation on-site, we keep quality assurance, environmental protection and worker's safety at the top of our list.

We also place great value in the relationship with our customer, providing consultation, installation support, commissioning and after-sales service.

One thing is certain, our innovation, quality, reliability and service is number one in the industry.

KESSEL – Leading in drainage



**Made in Germany**





KESSEL Headquarters Lenting, Germany

# Leading in drainage.

No matter whether the task involves discharging water, wastewater treatment or backwater protection: if the best solution is required, there is no option but KESSEL.



## Backwater protection

Backwater valves  
Backwater chambers



## Pump technology

Backwater pumping station  
Hybrid lifting station  
Lifting stations  
Pumping stations  
Submersible pumps,  
conversions and control units



## Drains & channels

Bathroom drains  
Floor drains  
Basement drains  
Outdoor drains

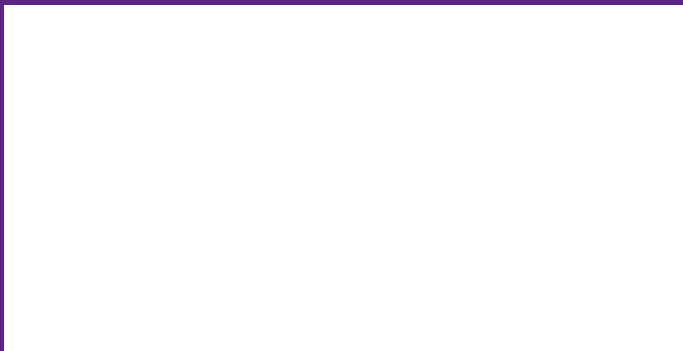


## Separators

Grease separators  
Coalescence / Oil /  
Fuel separators  
Sediment separators  
Starch separators



Further information see  
**[www.kessel.com](http://www.kessel.com)**



Subject to technical modifications.

**KESSEL AG**

Bahnhofstraße 31 • 85101 Lenting • Germany

[www.kessel.com](http://www.kessel.com)